

# Home data report

## 10126 RidgeGate Circle, Lone Tree, CO, US



**Total Area: 2041 sq. ft**

1st Floor: 795 sq. ft, 2nd Floor: 1246 sq. ft

Excluded: Garage 392 sq. ft, Patio 222 sq. ft, Balcony 71 sq. ft, Walls: 158 sq. ft

### Property summary

 **2** Floors

 **3** Bedrooms

 **2** Bathrooms

Home data report

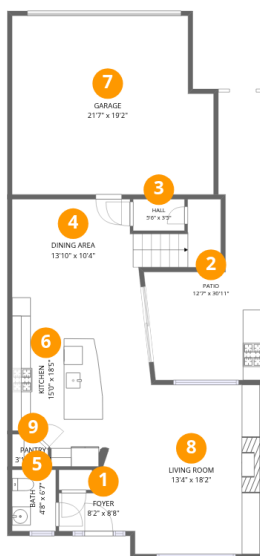
**10126 RidgeGate Circle,Lone Tree,CO,US**



**1**  
Half baths



**1**  
Garages



## Room dimensions

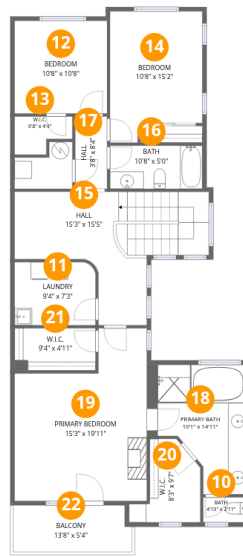
Floor 1

Total:795sqft Excluded: 614sqft

#		Dimensions	sqft	Counted as living area
1	Foyer	8'2" x 8'8"	50 sq. ft	Yes
2	Patio	12'7" x 30'11"	222 sq. ft	No
3	Hall	5'6" x 3'5"	19 sq. ft	Yes
4	Dining Area	13'10" x 10'4"	182 sq. ft	Yes
5	Bath	4'8" x 6'7"	31 sq. ft	Yes
6	Kitchen	15'0" x 18'5"	247 sq. ft	Yes
7	Garage	21'7" x 19'2"	392 sq. ft	No
8	Living Room	13'4" x 18'2"	231 sq. ft	Yes
9	Pantry	3'10" x 3'6"	12 sq. ft	Yes

# Home data report

## 10126 RidgeGate Circle,Lone Tree,CO,US



### Room dimensions

Floor 2

Total:1246sqft Excluded: 71sqft

#		Dimensions	sqft	Counted as living area
10	Bath	4'10" x 2'11"	14 sq. ft	Yes
11	Laundry	9'4" x 7'3"	67 sq. ft	Yes
12	Bedroom	10'8" x 10'8"	114 sq. ft	Yes
13	W.I.C.	6'8" x 4'4"	24 sq. ft	Yes
14	Bedroom	10'8" x 15'2"	145 sq. ft	Yes
15	Hall	15'3" x 15'5"	214 sq. ft	Yes
16	Bath	10'8" x 5'0"	53 sq. ft	Yes
17	Hall	3'8" x 8'4"	31 sq. ft	Yes
18	Primary Bath	10'1" x 14'11"	121 sq. ft	Yes
19	Primary Bedroom	15'3" x 19'11"	253 sq. ft	Yes
20	W.I.C.	8'3" x 9'7"	57 sq. ft	Yes

Home data report

## 10126 RidgeGate Circle,Lone Tree,CO,US

#		Dimensions	sqft	Counted as living area
21	W.I.C.	9'4" x 4'11"	46 sq. ft	Yes
22	Balcony	13'8" x 5'4"	71 sq. ft	No

## 1 Floor 1 - Foyer



Dimensions: 8'2" x 8'8"  
Area: 50 sq. ft  
Counted as living area: Yes

Heated: Yes  
Finished: Yes  
Enclosed: Yes  
Contiguous: Yes  
Permitted: Yes  
Wet space: No  
Addition: No  
Conversion: No

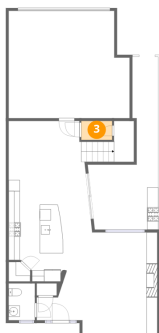
## 2 Floor 1 - Patio



Dimensions: 12'7" x 30'11"  
Area: 222 sq. ft  
Counted as living area: No

Heated: No  
Finished: No  
Enclosed: No  
Contiguous: Yes  
Permitted: Yes  
Wet space: No  
Addition: No  
Conversion: No

### 3 Floor 1 - Hall



Dimensions: 5'6" x 3'5"  
Area: 19 sq. ft  
Counted as living area: Yes

Heated: Yes  
Finished: Yes  
Enclosed: Yes  
Contiguous: Yes  
Permitted: Yes  
Wet space: No  
Addition: No  
Conversion: No

### 4 Floor 1 - Dining Area



Dimensions: 13'10" x 10'4"  
Area: 182 sq. ft  
Counted as living area: Yes

Heated: Yes  
Finished: Yes  
Enclosed: Yes  
Contiguous: Yes  
Permitted: Yes  
Wet space: No  
Addition: No  
Conversion: No

### 5 Floor 1 - Bath



Dimensions: 4'8" x 6'7"  
Area: 31 sq. ft  
Counted as living area: Yes

Heated: Yes  
Finished: Yes  
Enclosed: Yes  
Contiguous: Yes  
Permitted: Yes  
Wet space: Yes  
Addition: No  
Conversion: No

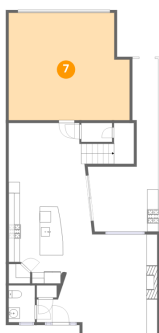
## 6 Floor 1 - Kitchen



Dimensions: 15'0" x 18'5"  
Area: 247 sq. ft  
Counted as living area: Yes

Heated: Yes  
Finished: Yes  
Enclosed: Yes  
Contiguous: Yes  
Permitted: Yes  
Wet space: No  
Addition: No  
Conversion: No

## 7 Floor 1 - Garage



Dimensions: 21'7" x 19'2"  
Area: 392 sq. ft  
Counted as living area: No

Heated: No  
Finished: No  
Enclosed: Yes  
Contiguous: Yes  
Permitted: Yes  
Wet space: No  
Addition: No  
Conversion: No

## 8 Floor 1 - Living Room



Dimensions: 13'4" x 18'2"  
Area: 231 sq. ft  
Counted as living area: Yes

Heated: Yes  
Finished: Yes  
Enclosed: Yes  
Contiguous: Yes  
Permitted: Yes  
Wet space: No  
Addition: No  
Conversion: No

### 9 Floor 1 - Pantry



Dimensions: 3'10" x 3'6"  
Area: 12 sq. ft  
Counted as living area: Yes

Heated: Yes  
Finished: Yes  
Enclosed: Yes  
Contiguous: Yes  
Permitted: Yes  
Wet space: No  
Addition: No  
Conversion: No

### 10 Floor 2 - Bath



Dimensions: 4'10" x 2'11"  
Area: 14 sq. ft  
Counted as living area: Yes

Heated: Yes  
Finished: Yes  
Enclosed: Yes  
Contiguous: Yes  
Permitted: Yes  
Wet space: Yes  
Addition: No  
Conversion: No

### 11 Floor 2 - Laundry



Dimensions: 9'4" x 7'3"  
Area: 67 sq. ft  
Counted as living area: Yes

Heated: Yes  
Finished: Yes  
Enclosed: Yes  
Contiguous: Yes  
Permitted: Yes  
Wet space: No  
Addition: No  
Conversion: No

## 12 Floor 2 - Bedroom



Dimensions: 10'8" x 10'8"  
Area: 114 sq. ft  
Counted as living area: Yes

Heated: Yes  
Finished: Yes  
Enclosed: Yes  
Contiguous: Yes  
Permitted: Yes  
Wet space: No  
Addition: No  
Conversion: No

## 13 Floor 2 - W.I.C.



Dimensions: 6'8" x 4'4"  
Area: 24 sq. ft  
Counted as living area: Yes

Heated: Yes  
Finished: Yes  
Enclosed: Yes  
Contiguous: Yes  
Permitted: Yes  
Wet space: No  
Addition: No  
Conversion: No

## 14 Floor 2 - Bedroom



Dimensions: 10'8" x 15'2"  
Area: 145 sq. ft  
Counted as living area: Yes

Heated: Yes  
Finished: Yes  
Enclosed: Yes  
Contiguous: Yes  
Permitted: Yes  
Wet space: No  
Addition: No  
Conversion: No

**15** Floor 2 - Hall

---

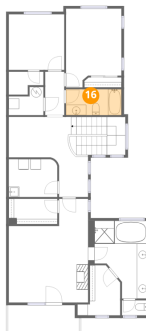


Dimensions: 15'3" x 15'5"  
Area: 214 sq. ft  
Counted as living area: Yes

Heated: Yes  
Finished: Yes  
Enclosed: Yes  
Contiguous: Yes  
Permitted: Yes  
Wet space: No  
Addition: No  
Conversion: No

**16** Floor 2 - Bath

---



Dimensions: 10'8" x 5'0"  
Area: 53 sq. ft  
Counted as living area: Yes

Heated: Yes  
Finished: Yes  
Enclosed: Yes  
Contiguous: Yes  
Permitted: Yes  
Wet space: Yes  
Addition: No  
Conversion: No

**17** Floor 2 - Hall

---



Dimensions: 3'8" x 8'4"  
Area: 31 sq. ft  
Counted as living area: Yes

Heated: Yes  
Finished: Yes  
Enclosed: Yes  
Contiguous: Yes  
Permitted: Yes  
Wet space: No  
Addition: No  
Conversion: No

### 18 Floor 2 - Primary Bath



Dimensions: 10'1" x 14'11"  
Area: 121 sq. ft  
Counted as living area: Yes

Heated: Yes  
Finished: Yes  
Enclosed: Yes  
Contiguous: Yes  
Permitted: Yes  
Wet space: Yes  
Addition: No  
Conversion: No

### 19 Floor 2 - Primary Bedroom



Dimensions: 15'3" x 19'11"  
Area: 253 sq. ft  
Counted as living area: Yes

Heated: Yes  
Finished: Yes  
Enclosed: Yes  
Contiguous: Yes  
Permitted: Yes  
Wet space: No  
Addition: No  
Conversion: No

### 20 Floor 2 - W.I.C.



Dimensions: 8'3" x 9'7"  
Area: 57 sq. ft  
Counted as living area: Yes

Heated: Yes  
Finished: Yes  
Enclosed: Yes  
Contiguous: Yes  
Permitted: Yes  
Wet space: No  
Addition: No  
Conversion: No

**21** Floor 2 - W.I.C.

---

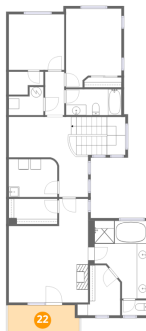


Dimensions: 9'4" x 4'11"  
Area: 46 sq. ft  
Counted as living area: Yes

Heated: Yes  
Finished: Yes  
Enclosed: Yes  
Contiguous: Yes  
Permitted: Yes  
Wet space: No  
Addition: No  
Conversion: No

**22** Floor 2 - Balcony

---



Dimensions: 13'8" x 5'4"  
Area: 71 sq. ft  
Counted as living area: No

Heated: No  
Finished: No  
Enclosed: No  
Contiguous: Yes  
Permitted: Yes  
Wet space: No  
Addition: No  
Conversion: No