

Home data report

6428 Bartz Rd, Lockport, NY, US



Total Area: 4685 sq. ft

Basement: 2224 sq. ft, 1st Floor: 2461 sq. ft

Excluded: Utility 246 sq. ft, Patio 2612 sq. ft, Screened porch 309 sq. ft, Walls: 249 sq. ft

Property summary

 **2** Floors

 **4** Bedrooms

 **2** Bathrooms

Home data report

6428 Bartz Rd, Lockport, NY, US



Room dimensions

Floor 1 Below grade

Total:2224sqft

Excluded: 246sqft

#		Dimensions	sqft	Counted as living area
1	Utility	15'4" x 16'11"	246 sq. ft	No
2	Bedroom	11'11" x 11'11"	142 sq. ft	Yes
3	Room	14'0" x 7'2"	101 sq. ft	Yes
4	Recreation Room	57'6" x 36'7"	1735 sq. ft	Yes
5	Laundry	9'8" x 13'4"	129 sq. ft	Yes



Room dimensions

Floor 2

Total: 2461 sqft

Excluded: 2921 sqft

#		Dimensions	sqft	Counted as living area
6	Room	6'1" x 11'5"	69 sq. ft	Yes
7	Dining Area	13'6" x 11'5"	154 sq. ft	Yes
8	Primary Bedroom	21'9" x 23'5"	310 sq. ft	Yes
9	Living Room	14'6" x 25'1"	364 sq. ft	Yes
10	Hall	15'6" x 9'7"	79 sq. ft	Yes
11	Bedroom	12'6" x 15'5"	193 sq. ft	Yes
12	Bath	5'4" x 11'5"	55 sq. ft	Yes
13	Bar	15'6" x 15'4"	238 sq. ft	Yes
14	Kitchen	15'9" x 25'1"	376 sq. ft	Yes
15	Patio	62'5" x 46'7"	2612 sq. ft	No
16	Primary Bath	11'11" x 10'8"	127 sq. ft	Yes

Home data report

6428 Bartz Rd,Lockport,NY,US

#		Dimensions	sqft	Counted as living area
17	Foyer	10'11" x 11'9"	94 sq. ft	Yes
18	Bedroom	16'0" x 11'11"	182 sq. ft	Yes
19	Screened Porch	20'4" x 15'2"	309 sq. ft	No

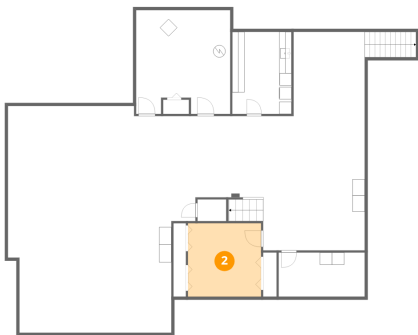
1 Floor 1 - Utility



Dimensions: 15'4" x 16'11"
Area: 246 sq. ft
Counted as living area: No

Heated: Yes
Finished: No
Enclosed: Yes
Contiguous: Yes
Permitted: Yes
Wet space: No
Addition: No
Conversion: No

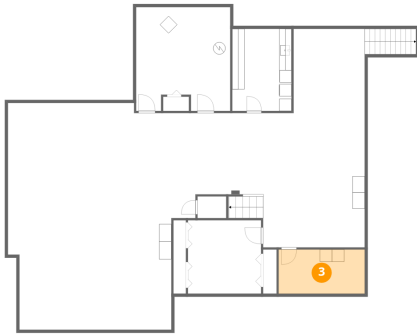
2 Floor 1 - Bedroom



Dimensions: 11'11" x 11'11"
Area: 142 sq. ft
Counted as living area: Yes

Heated: Yes
Finished: Yes
Enclosed: Yes
Contiguous: Yes
Permitted: Yes
Wet space: No
Addition: No
Conversion: No

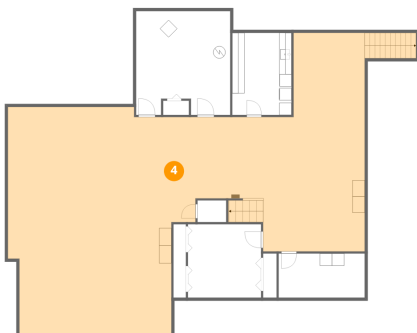
3 Floor 1 - Room



Dimensions: 14'0" x 7'2"
Area: 101 sq. ft
Counted as living area: Yes

Heated: Yes
Finished: Yes
Enclosed: Yes
Contiguous: Yes
Permitted: Yes
Wet space: No
Addition: No
Conversion: No

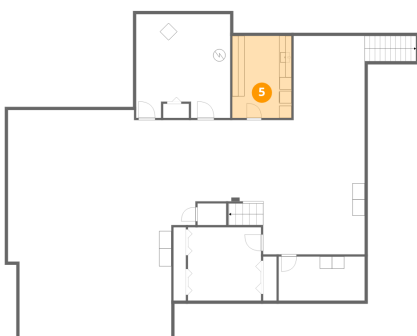
4 Floor 1 - Recreation Room



Dimensions: 57'6" x 36'7"
Area: 1735 sq. ft
Counted as living area: Yes

Heated: Yes
Finished: Yes
Enclosed: Yes
Contiguous: Yes
Permitted: Yes
Wet space: No
Addition: No
Conversion: No

5 Floor 1 - Laundry



Dimensions: 9'8" x 13'4"
Area: 129 sq. ft
Counted as living area: Yes

Heated: Yes
Finished: Yes
Enclosed: Yes
Contiguous: Yes
Permitted: Yes
Wet space: No
Addition: No
Conversion: No

6 Floor 2 - Room



Dimensions: 6'1" x 11'5"
Area: 69 sq. ft
Counted as living area: Yes

Heated: Yes
Finished: Yes
Enclosed: Yes
Contiguous: Yes
Permitted: Yes
Wet space: No
Addition: No
Conversion: No

7 Floor 2 - Dining Area



Dimensions: 13'6" x 11'5"
Area: 154 sq. ft
Counted as living area: Yes

Heated: Yes
Finished: Yes
Enclosed: Yes
Contiguous: Yes
Permitted: Yes
Wet space: No
Addition: No
Conversion: No

8 Floor 2 - Primary Bedroom



Dimensions: 21'9" x 23'5"
Area: 310 sq. ft
Counted as living area: Yes

Heated: Yes
Finished: Yes
Enclosed: Yes
Contiguous: Yes
Permitted: Yes
Wet space: No
Addition: No
Conversion: No

9 Floor 2 - Living Room



Dimensions: 14'6" x 25'1"
Area: 364 sq. ft
Counted as living area: Yes

Heated: Yes
Finished: Yes
Enclosed: Yes
Contiguous: Yes
Permitted: Yes
Wet space: No
Addition: No
Conversion: No

10 Floor 2 - Hall



Dimensions: 15'6" x 9'7"
Area: 79 sq. ft
Counted as living area: Yes

Heated: Yes
Finished: Yes
Enclosed: Yes
Contiguous: Yes
Permitted: Yes
Wet space: No
Addition: No
Conversion: No

11 Floor 2 - Bedroom



Dimensions: 12'6" x 15'5"
Area: 193 sq. ft
Counted as living area: Yes

Heated: Yes
Finished: Yes
Enclosed: Yes
Contiguous: Yes
Permitted: Yes
Wet space: No
Addition: No
Conversion: No

12 Floor 2 - Bath



Dimensions: 5'4" x 11'5"
Area: 55 sq. ft
Counted as living area: Yes

Heated: Yes
Finished: Yes
Enclosed: Yes
Contiguous: Yes
Permitted: Yes
Wet space: Yes
Addition: No
Conversion: No

13 Floor 2 - Bar



Dimensions: 15'6" x 15'4"
Area: 238 sq. ft
Counted as living area: Yes

Heated: Yes
Finished: Yes
Enclosed: Yes
Contiguous: Yes
Permitted: Yes
Wet space: No
Addition: No
Conversion: No

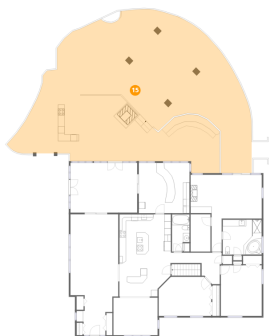
14 Floor 2 - Kitchen



Dimensions: 15'9" x 25'1"
Area: 376 sq. ft
Counted as living area: Yes

Heated: Yes
Finished: Yes
Enclosed: Yes
Contiguous: Yes
Permitted: Yes
Wet space: No
Addition: No
Conversion: No

15 Floor 2 - Patio



Dimensions: 62'5" x 46'7"
Area: 2612 sq. ft
Counted as living area: No

Heated: No
Finished: No
Enclosed: No
Contiguous: Yes
Permitted: Yes
Wet space: No
Addition: No
Conversion: No

16 Floor 2 - Primary Bath



Dimensions: 11'11" x 10'8"
Area: 127 sq. ft
Counted as living area: Yes

Heated: Yes
Finished: Yes
Enclosed: Yes
Contiguous: Yes
Permitted: Yes
Wet space: Yes
Addition: No
Conversion: No

17 Floor 2 - Foyer



Dimensions: 10'11" x 11'9"
Area: 94 sq. ft
Counted as living area: Yes

Heated: Yes
Finished: Yes
Enclosed: Yes
Contiguous: Yes
Permitted: Yes
Wet space: No
Addition: No
Conversion: No

18 Floor 2 - Bedroom



Dimensions: 16'0" x 11'11"
Area: 182 sq. ft
Counted as living area: Yes

Heated: Yes
Finished: Yes
Enclosed: Yes
Contiguous: Yes
Permitted: Yes
Wet space: No
Addition: No
Conversion: No

19 Floor 2 - Screened Porch



Dimensions: 20'4" x 15'2"
Area: 309 sq. ft
Counted as living area: No

Heated: No
Finished: No
Enclosed: No
Contiguous: Yes
Permitted: Yes
Wet space: No
Addition: No
Conversion: No