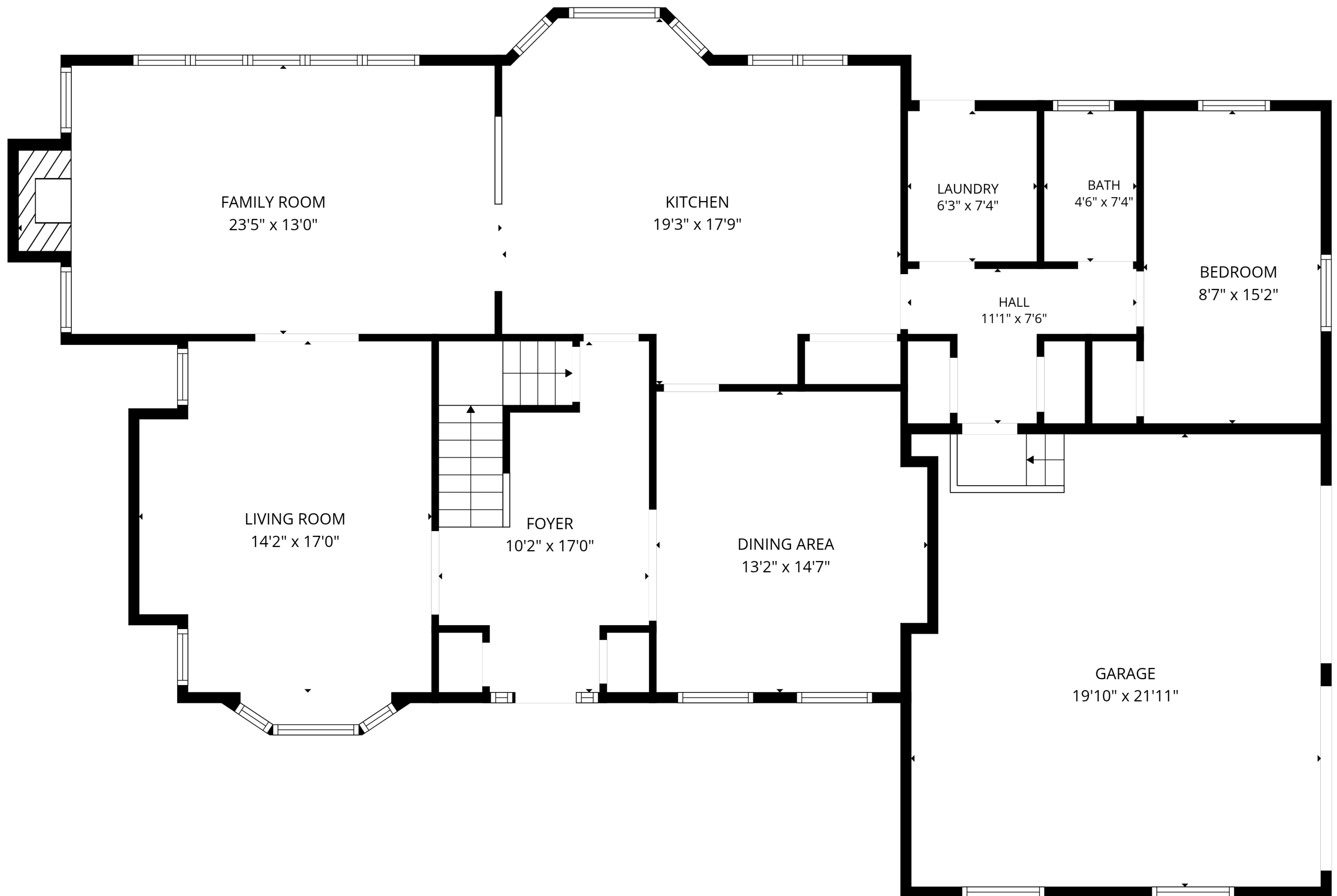


BASEMENT  
60'5" x 30'4"

BASEMENT  
22'4" x 17'0"

**TOTAL: 2768 sq. ft**

Basement: 0 sq. ft, 1st floor: 1482 sq. ft, 2nd floor: 1286 sq. ft  
EXCLUDED AREAS: BASEMENT: 1452 sq. ft, GARAGE: 424 sq. ft, BAY WINDOW: 23 sq. ft,  
FIREPLACE: 15 sq. ft, LOW CEILING: 289 sq. ft, ATTIC: 340 sq. ft,  
OPEN TO BELOW: 58 sq. ft, WALLS: 318 sq. ft



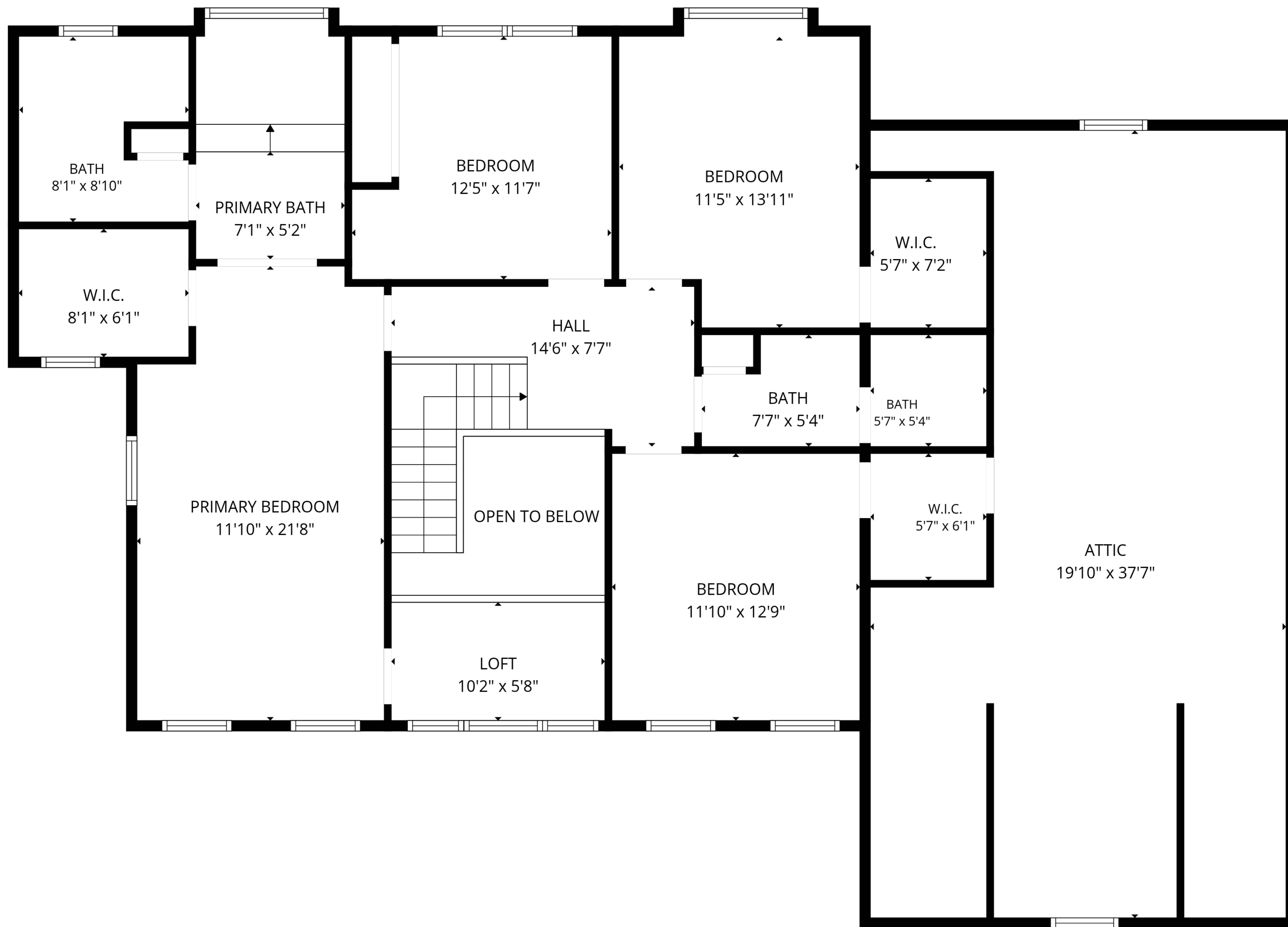
**TOTAL: 2768 sq. ft**

Basement: 0 sq. ft, 1st floor: 1482 sq. ft, 2nd floor: 1286 sq. ft

EXCLUDED AREAS: BASEMENT: 1452 sq. ft, GARAGE: 424 sq. ft, BAY WINDOW: 23 sq. ft,

FIREPLACE: 15 sq. ft, LOW CEILING: 289 sq. ft, ATTIC: 340 sq. ft,

OPEN TO BELOW: 58 sq. ft, WALLS: 318 sq. ft



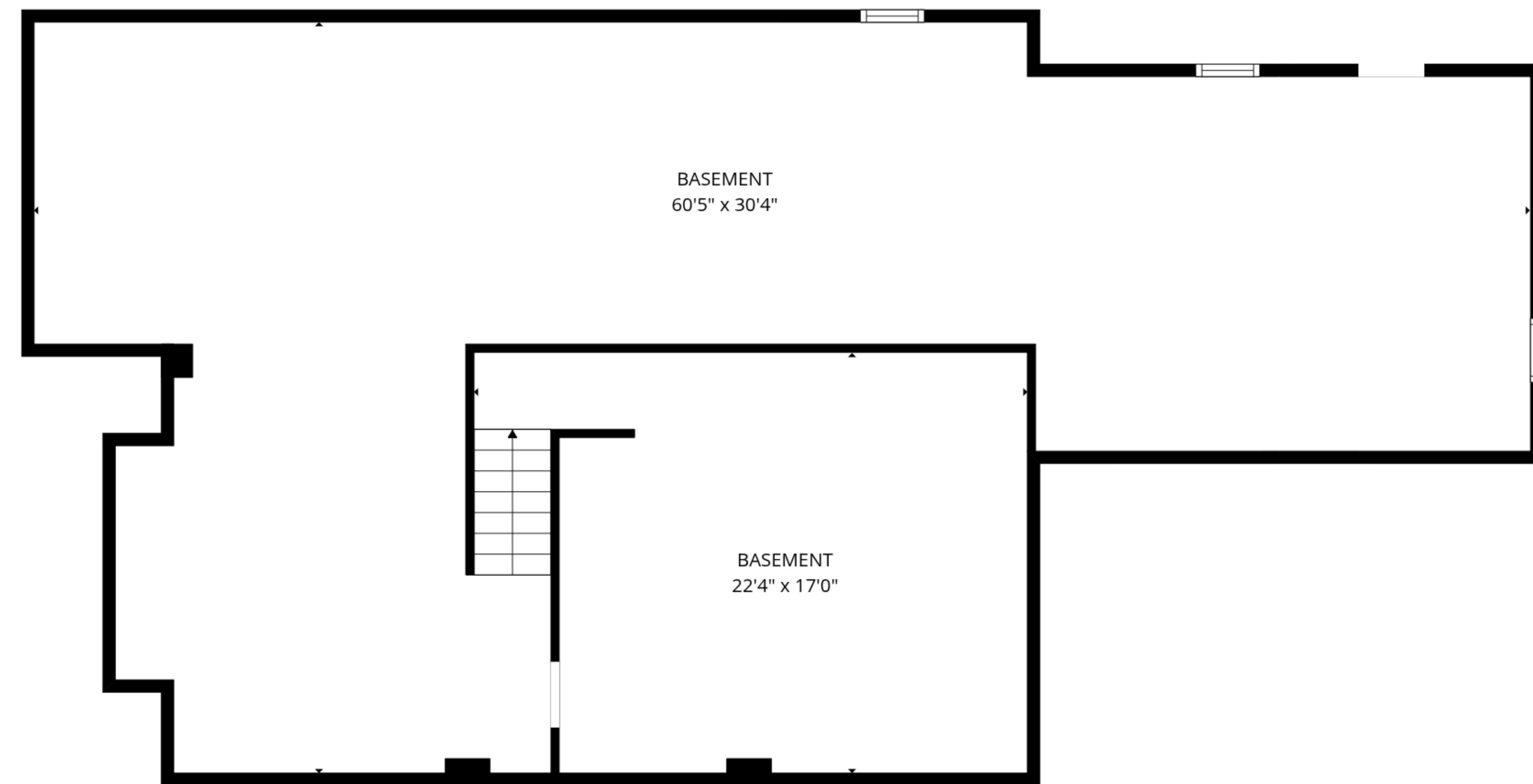
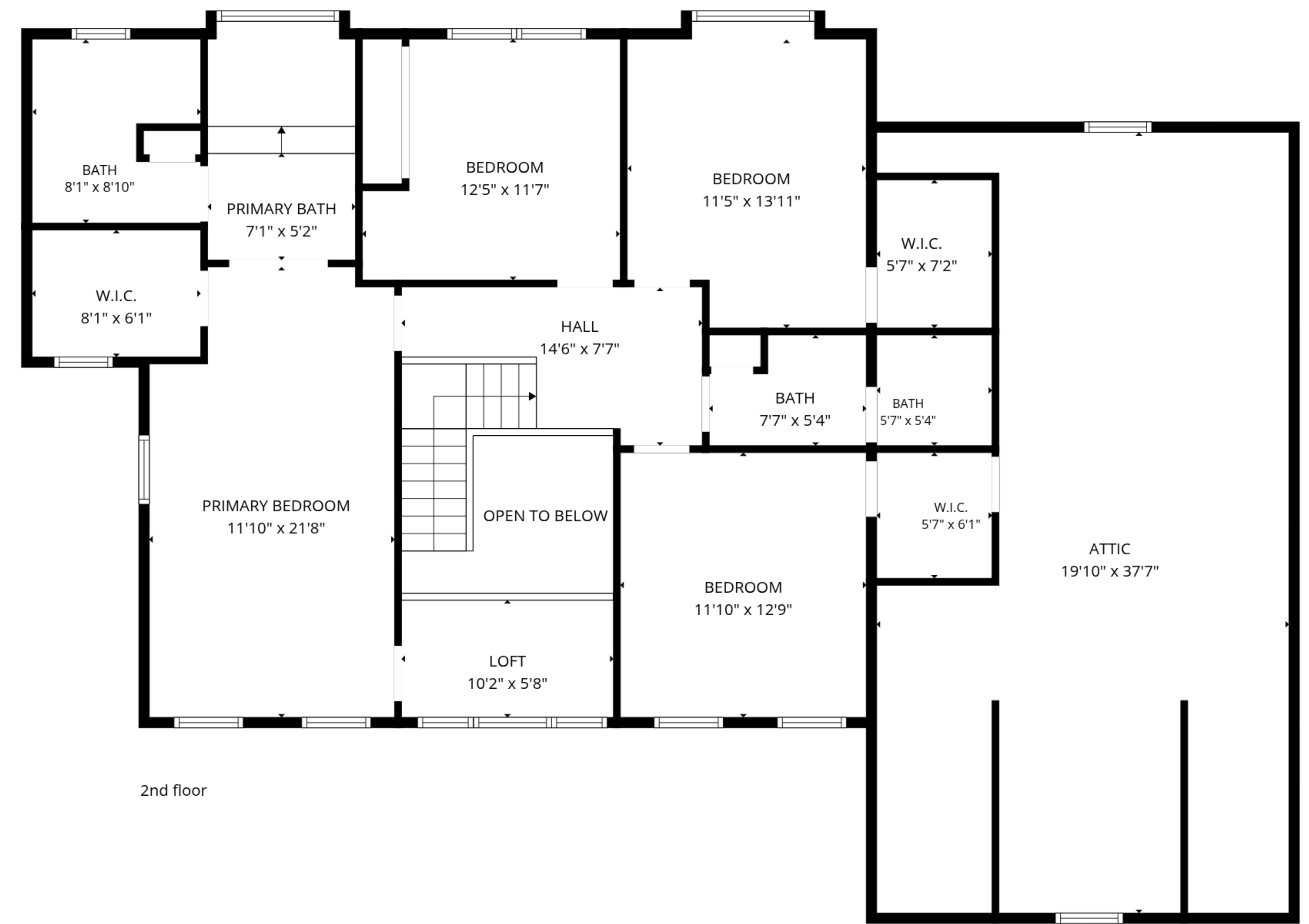
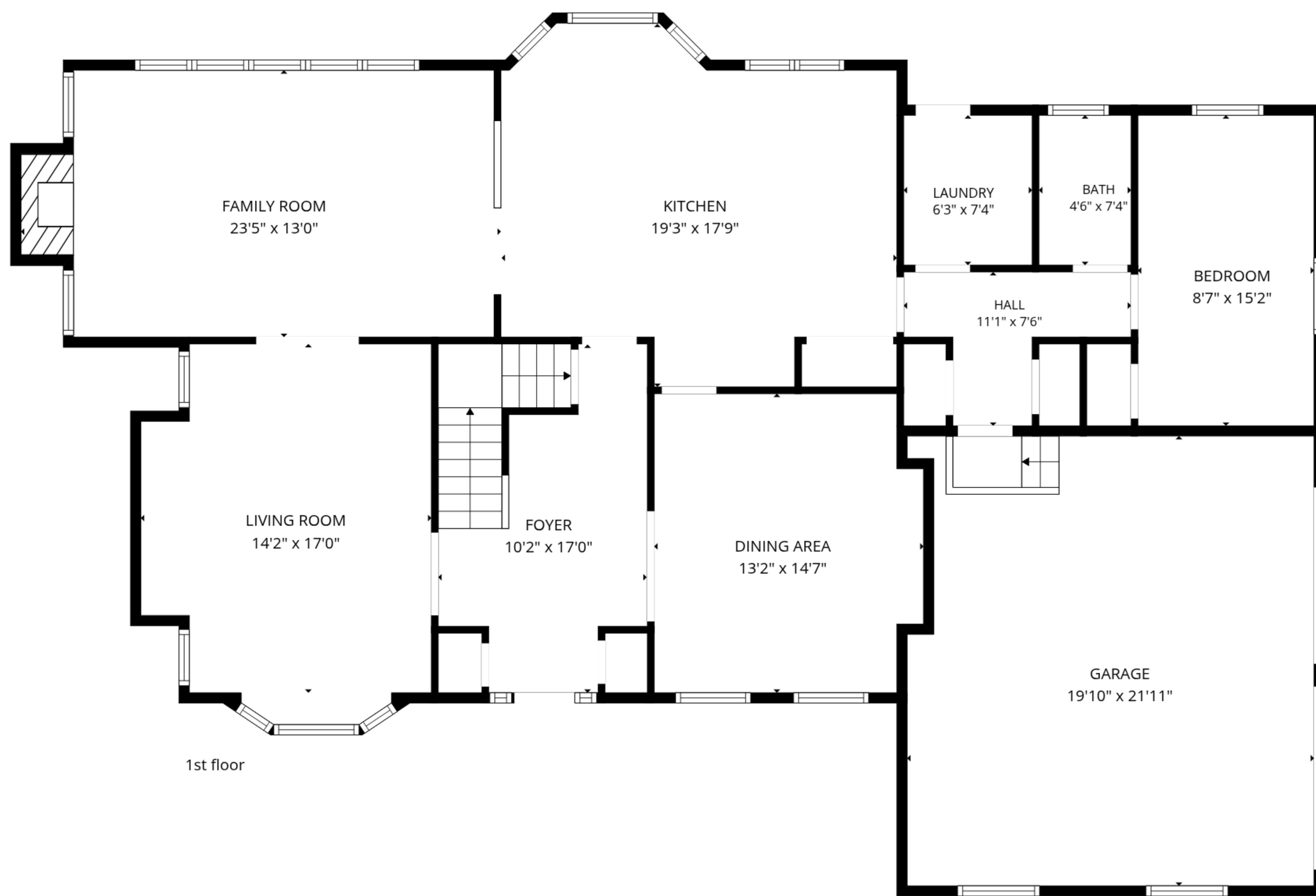
**TOTAL: 2768 sq. ft**

Basement: 0 sq. ft, 1st floor: 1482 sq. ft, 2nd floor: 1286 sq. ft

EXCLUDED AREAS: BASEMENT: 1452 sq. ft, GARAGE: 424 sq. ft, BAY WINDOW: 23 sq. ft,

FIREPLACE: 15 sq. ft, LOW CEILING: 289 sq. ft, ATTIC: 340 sq. ft,

OPEN TO BELOW: 58 sq. ft, WALLS: 318 sq. ft



**TOTAL: 2768 sq. ft**  
 Basement: 0 sq. ft, 1st floor: 1482 sq. ft, 2nd floor: 1286 sq. ft  
 EXCLUDED AREAS: BASEMENT: 1452 sq. ft, GARAGE: 424 sq. ft, BAY WINDOW: 23 sq. ft,  
 FIREPLACE: 15 sq. ft, LOW CEILING: 289 sq. ft, ATTIC: 340 sq. ft,  
 OPEN TO BELOW: 58 sq. ft, WALLS: 318 sq. ft