

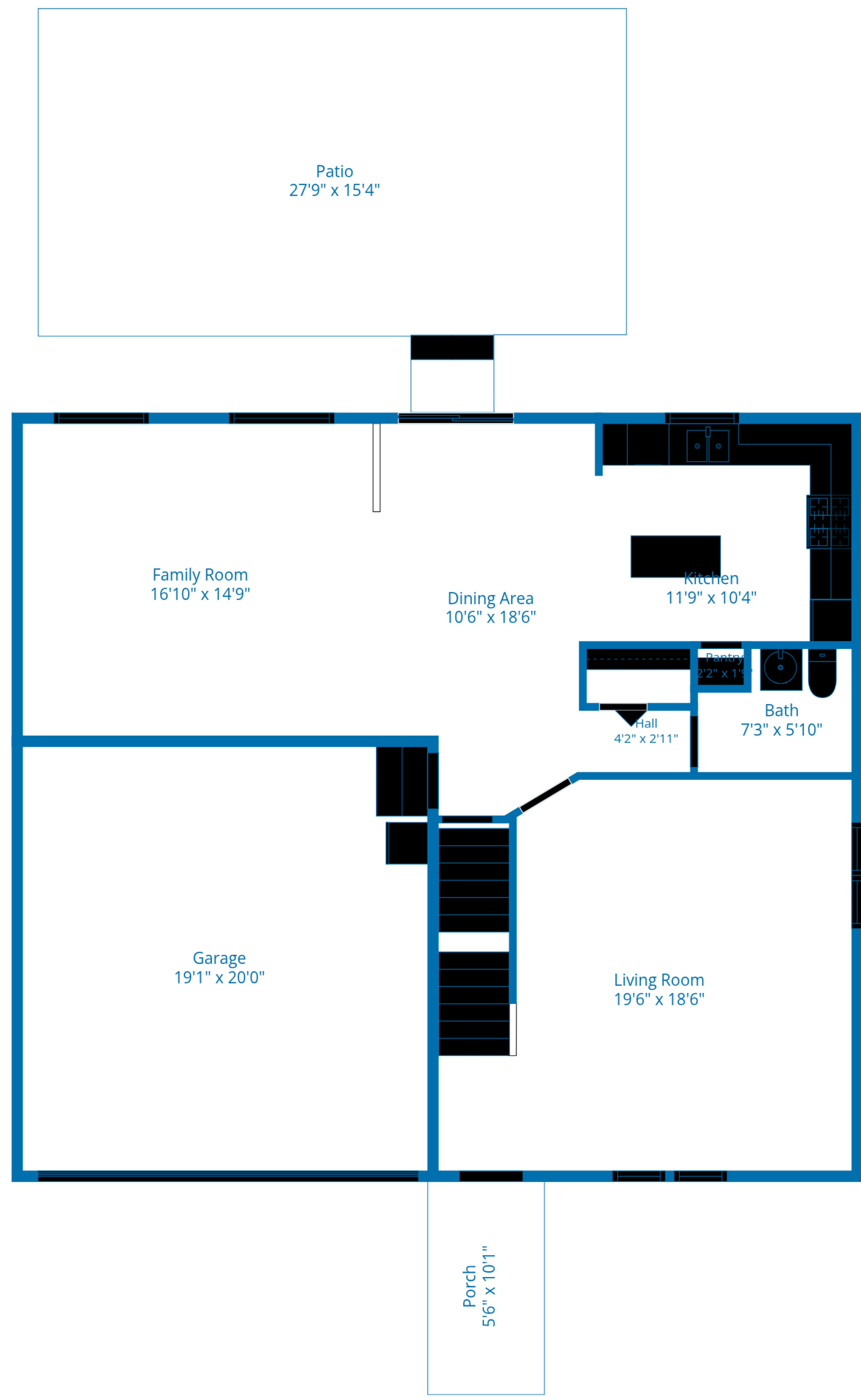
Basement
39'2" x 35'3"

TOTAL: 3337 sq. ft
Basement: 978 sq. ft, 1st floor: 978 sq. ft, 2nd floor: 1381 sq. ft
EXCLUDED AREAS: GARAGE: 383 sq. ft, PORCH: 55 sq. ft, PATIO: 443 sq. ft,
WALLS: 247 sq. ft



Floor Plans Are Highly Accurate But Dimensions Are Not Guaranteed.



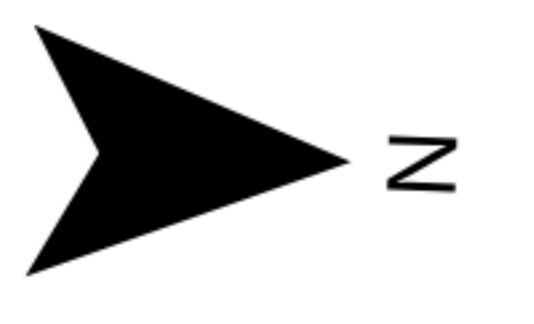


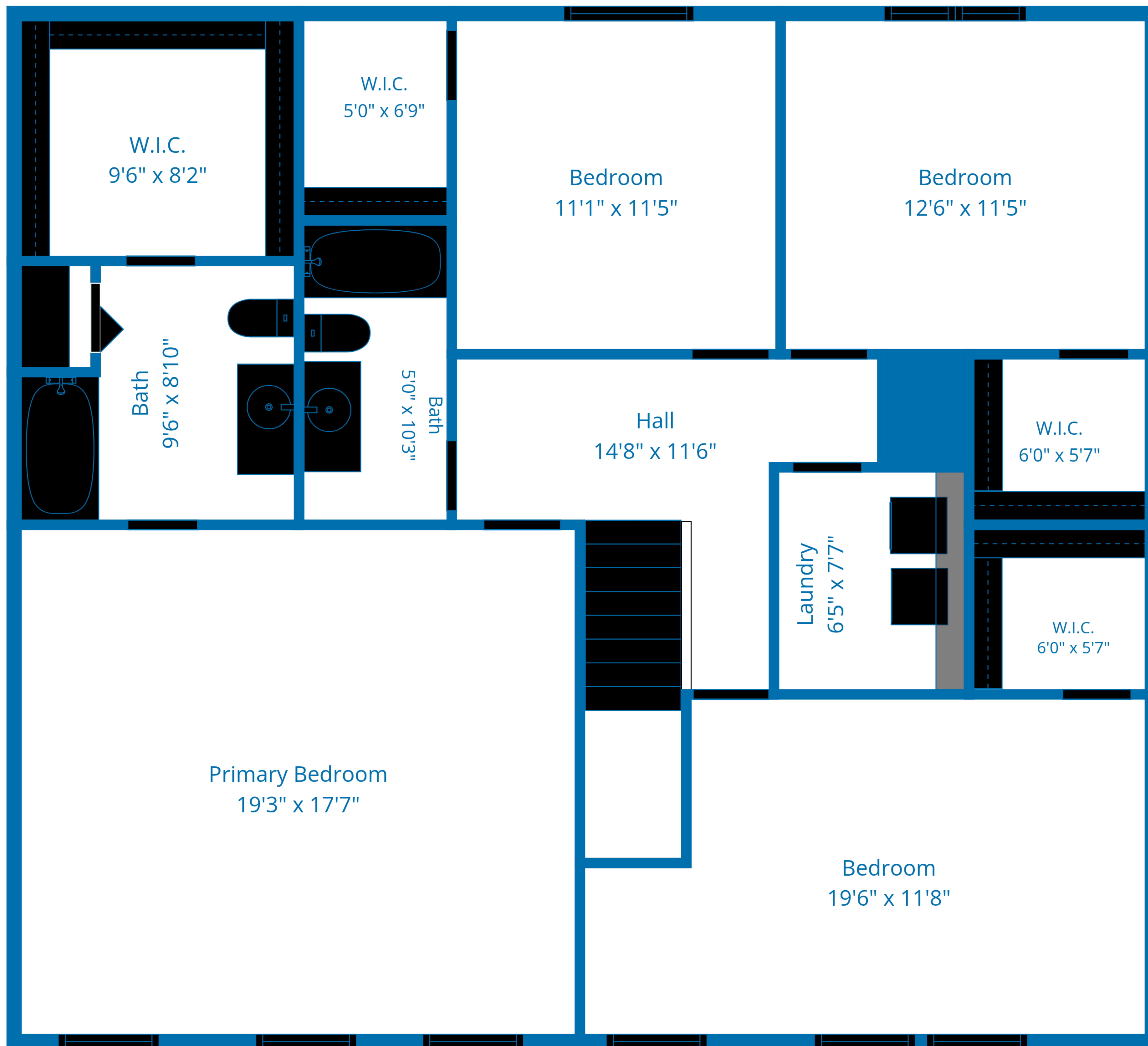
TOTAL: 3337 sq. ft

Basement: 978 sq. ft, 1st floor: 978 sq. ft, 2nd floor: 1381 sq. ft
 EXCLUDED AREAS: GARAGE: 383 sq. ft, PORCH: 55 sq. ft, PATIO: 443 sq. ft,
 WALLS: 247 sq. ft



Floor Plans Are Highly Accurate But Dimensions Are Not Guaranteed.



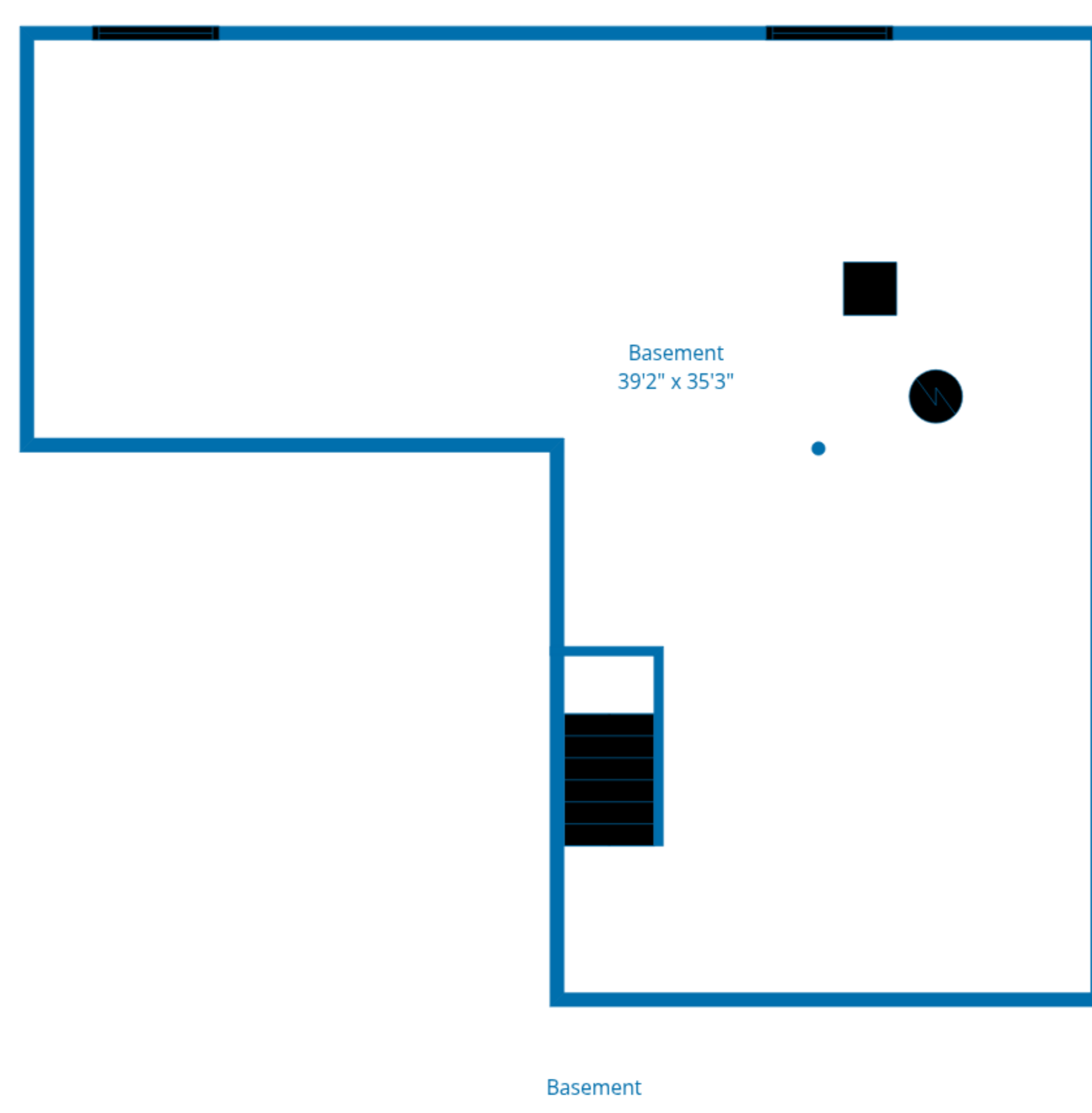
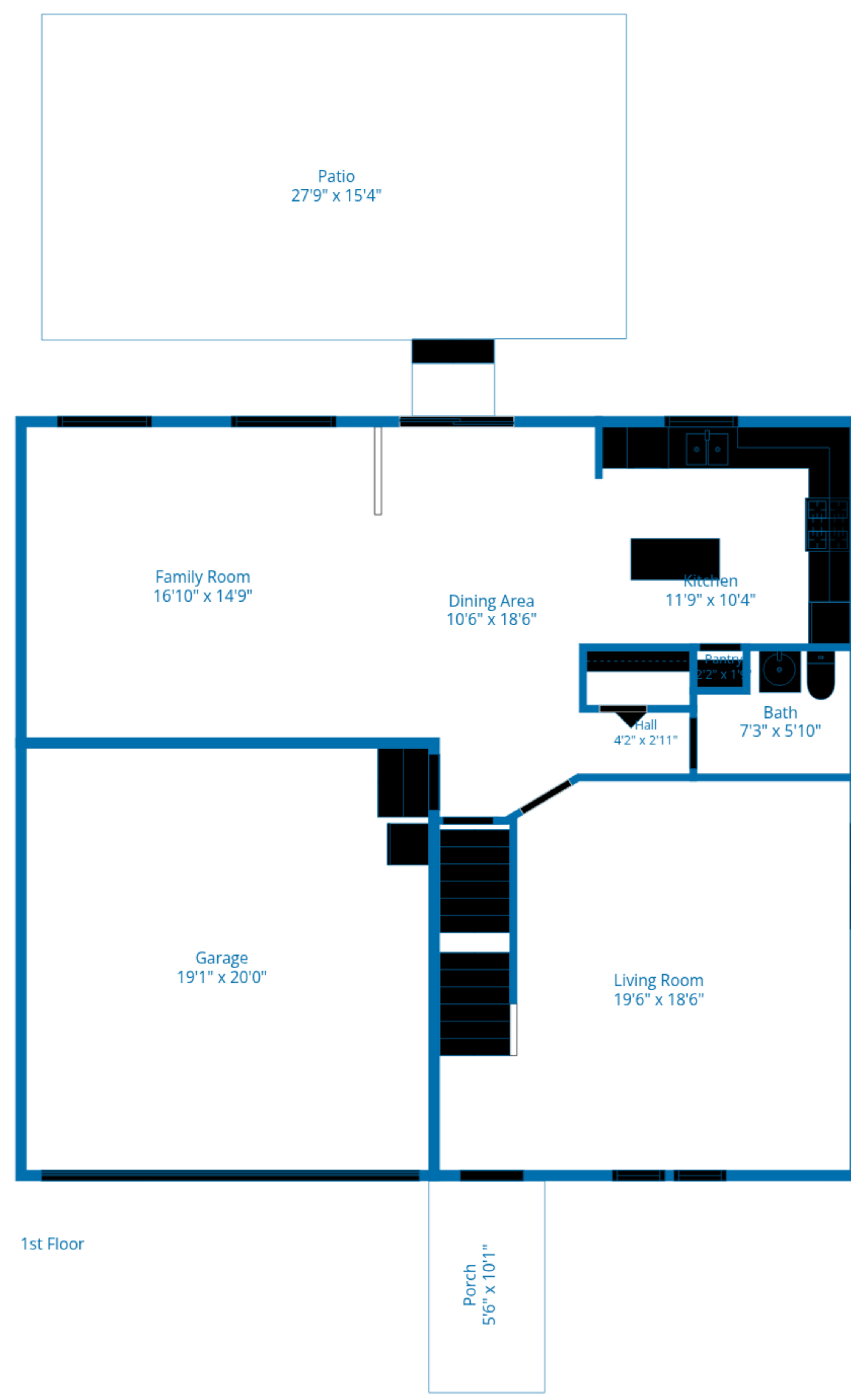


TOTAL: 3337 sq. ft

Basement: 978 sq. ft, 1st floor: 978 sq. ft, 2nd floor: 1381 sq. ft
 EXCLUDED AREAS: GARAGE: 383 sq. ft, PORCH: 55 sq. ft, PATIO: 443 sq. ft,
 WALLS: 247 sq. ft

Floor Plans Are Highly Accurate But Dimensions Are Not Guaranteed.





TOTAL: 3337 sq. ft
 Basement: 978 sq. ft, 1st floor: 978 sq. ft, 2nd floor: 1381 sq. ft
 EXCLUDED AREAS: GARAGE: 383 sq. ft, PORCH: 55 sq. ft, PATIO: 443 sq. ft,
 WALLS: 247 sq. ft

Floor Plans Are Highly Accurate But Dimensions Are Not Guaranteed.

