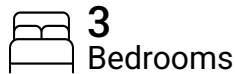


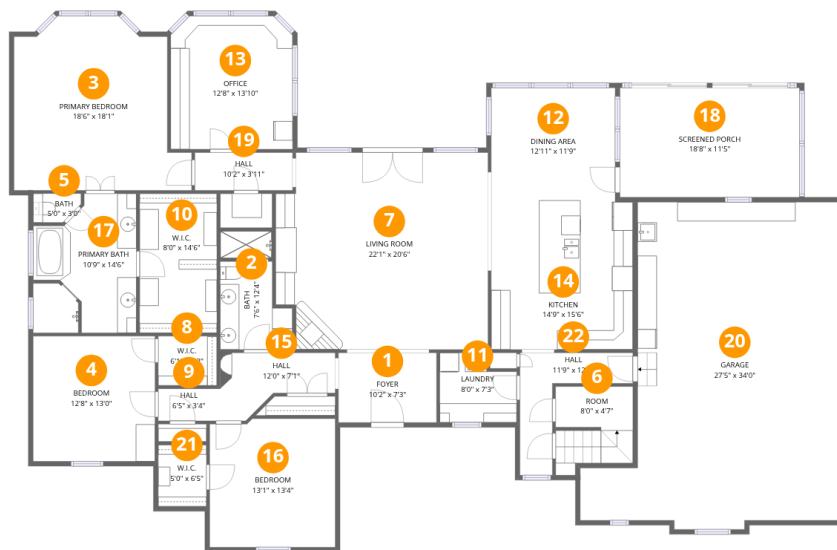
Total Area: 2549 sq. ft

1st Floor: 2549 sq. ft, 2nd Floor: 0 sq. ft

Excluded: Garage 749 sq. ft, Screened porch 212 sq. ft, Undefined 47 sq. ft, Low ceiling 506 sq. ft, Attic 1397 sq. ft, Walls: 295 sq. ft

Property summary





Room dimensions

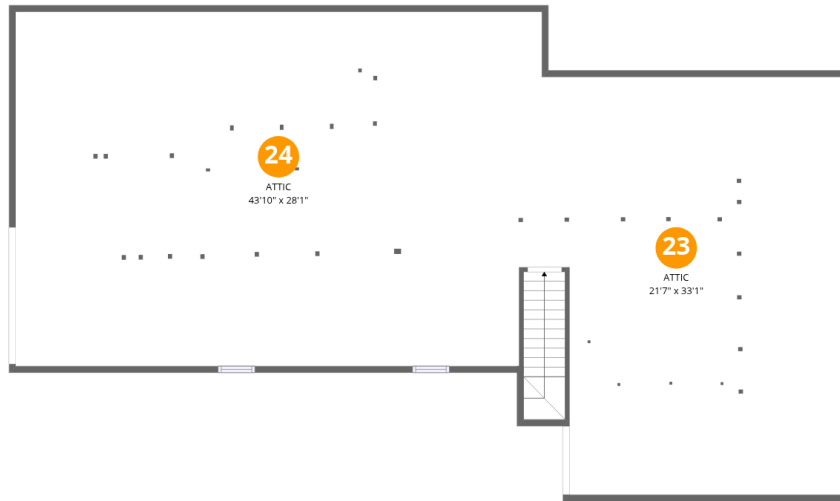
Floor 1

Total:2549sqft Excluded: 961sqft

#		Dimensions	sqft	Counted as living area
1	Foyer	10'2" x 7'3"	74 sq. ft	Yes
2	Bath	7'6" x 12'4"	75 sq. ft	Yes
3	Primary Bedroom	18'6" x 18'1"	283 sq. ft	Yes
4	Bedroom	12'8" x 13'0"	165 sq. ft	Yes
5	Bath	5'0" x 3'0"	13 sq. ft	Yes
6	Room	8'0" x 4'7"	65 sq. ft	Yes
7	Living Room	22'1" x 20'6"	433 sq. ft	Yes
8	W.I.C.	6'1" x 5'2"	31 sq. ft	Yes
9	Hall	6'5" x 3'4"	21 sq. ft	Yes
10	W.I.C.	8'0" x 14'6"	116 sq. ft	Yes
11	Laundry	8'0" x 7'3"	52 sq. ft	Yes



#		Dimensions	sqft	Counted as living area
12	Dining Area	12'11" x 11'9"	151 sq. ft	Yes
13	Office	12'8" x 13'10"	172 sq. ft	Yes
14	Kitchen	14'9" x 15'6"	228 sq. ft	Yes
15	Hall	12'0" x 7'1"	62 sq. ft	Yes
16	Bedroom	13'1" x 13'4"	172 sq. ft	Yes
17	Primary Bath	10'9" x 14'6"	138 sq. ft	Yes
18	Screened Porch	18'8" x 11'5"	212 sq. ft	No
19	Hall	10'2" x 3'11"	40 sq. ft	Yes
20	Garage	27'5" x 34'0"	748 sq. ft	No
21	W.I.C.	5'0" x 6'5"	32 sq. ft	Yes
22	Hall	11'9" x 12'9"	69 sq. ft	Yes



Room dimensions

Floor 2

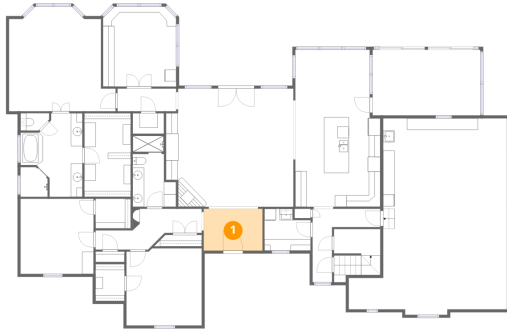
Total:0sqft

Excluded: 1950sqft

#		Dimensions	sqft	Counted as living area
23	Attic	21'7" x 33'1"	370 sq. ft	No
24	Attic	43'10" x 28'1"	1027 sq. ft	No



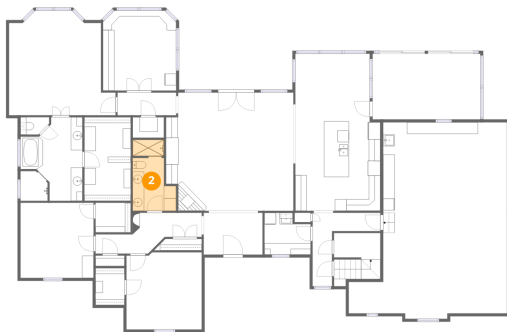
1 Floor 1 - Foyer



Dimensions: 10'2" x 7'3"
Area: 74 sq. ft
Counted as living area: Yes

Heated: Yes
Finished: Yes
Enclosed: Yes
Contiguous: Yes
Permitted: Yes
Wet space: No
Addition: No
Conversion: No

2 Floor 1 - Bath

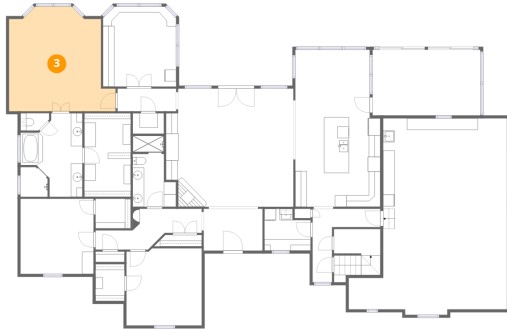


Dimensions: 7'6" x 12'4"
Area: 75 sq. ft
Counted as living area: Yes

Heated: Yes
Finished: Yes
Enclosed: Yes
Contiguous: Yes
Permitted: Yes
Wet space: Yes
Addition: No
Conversion: No



3 Floor 1 - Primary Bedroom



Dimensions: 18'6" x 18'1"
Area: 283 sq. ft
Counted as living area: Yes

Heated: Yes
Finished: Yes
Enclosed: Yes
Contiguous: Yes
Permitted: Yes
Wet space: No
Addition: No
Conversion: No

4 Floor 1 - Bedroom



Dimensions: 12'8" x 13'0"
Area: 165 sq. ft
Counted as living area: Yes

Heated: Yes
Finished: Yes
Enclosed: Yes
Contiguous: Yes
Permitted: Yes
Wet space: No
Addition: No
Conversion: No

5 Floor 1 - Bath

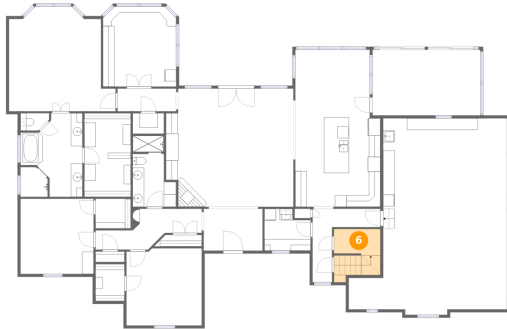


Dimensions: 5'0" x 3'0"
Area: 13 sq. ft
Counted as living area: Yes

Heated: Yes
Finished: Yes
Enclosed: Yes
Contiguous: Yes
Permitted: Yes
Wet space: Yes
Addition: No
Conversion: No



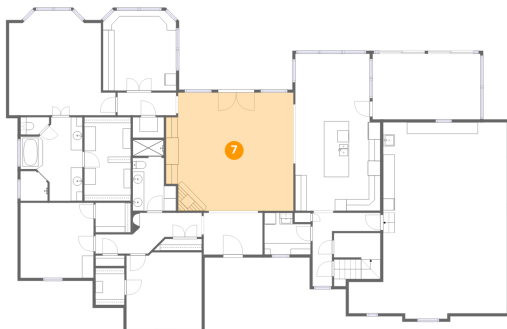
6 Floor 1 - Room



Dimensions: 8'0" x 4'7"
Area: 65 sq. ft
Counted as living area: Yes

Heated: Yes
Finished: Yes
Enclosed: Yes
Contiguous: Yes
Permitted: Yes
Wet space: No
Addition: No
Conversion: No

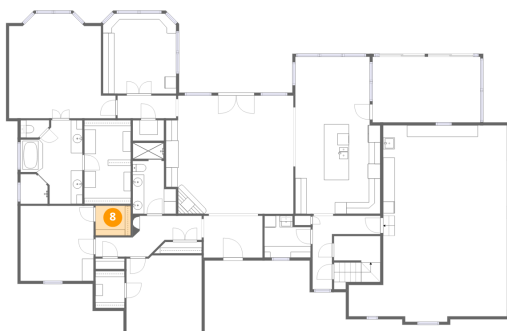
7 Floor 1 - Living Room



Dimensions: 22'1" x 20'6"
Area: 433 sq. ft
Counted as living area: Yes

Heated: Yes
Finished: Yes
Enclosed: Yes
Contiguous: Yes
Permitted: Yes
Wet space: No
Addition: No
Conversion: No

8 Floor 1 - W.I.C.

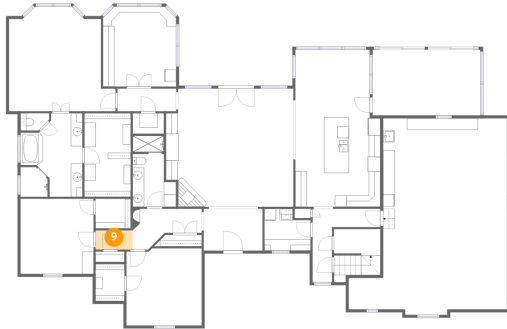


Dimensions: 6'1" x 5'2"
Area: 31 sq. ft
Counted as living area: Yes

Heated: Yes
Finished: Yes
Enclosed: Yes
Contiguous: Yes
Permitted: Yes
Wet space: No
Addition: No
Conversion: No



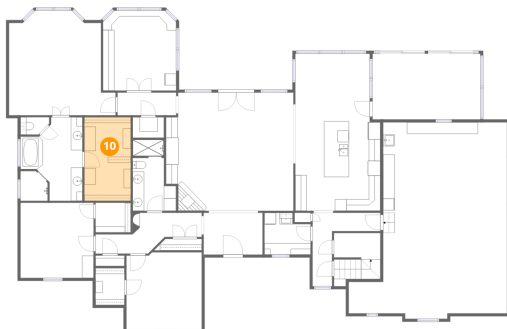
9 Floor 1 - Hall



Dimensions: 6'5" x 3'4"
Area: 21 sq. ft
Counted as living area: Yes

Heated: Yes
Finished: Yes
Enclosed: Yes
Contiguous: Yes
Permitted: Yes
Wet space: No
Addition: No
Conversion: No

10 Floor 1 - W.I.C.



Dimensions: 8'0" x 14'6"
Area: 116 sq. ft
Counted as living area: Yes

Heated: Yes
Finished: Yes
Enclosed: Yes
Contiguous: Yes
Permitted: Yes
Wet space: No
Addition: No
Conversion: No

11 Floor 1 - Laundry



Dimensions: 8'0" x 7'3"
Area: 52 sq. ft
Counted as living area: Yes

Heated: Yes
Finished: Yes
Enclosed: Yes
Contiguous: Yes
Permitted: Yes
Wet space: No
Addition: No
Conversion: No



12 Floor 1 - Dining Area



Dimensions: 12'11" x 11'9"
Area: 151 sq. ft
Counted as living area: Yes

Heated: Yes
Finished: Yes
Enclosed: Yes
Contiguous: Yes
Permitted: Yes
Wet space: No
Addition: No
Conversion: No

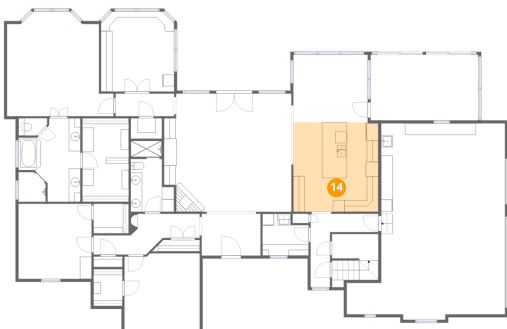
13 Floor 1 - Office



Dimensions: 12'8" x 13'10"
Area: 172 sq. ft
Counted as living area: Yes

Heated: Yes
Finished: Yes
Enclosed: Yes
Contiguous: Yes
Permitted: Yes
Wet space: No
Addition: No
Conversion: No

14 Floor 1 - Kitchen

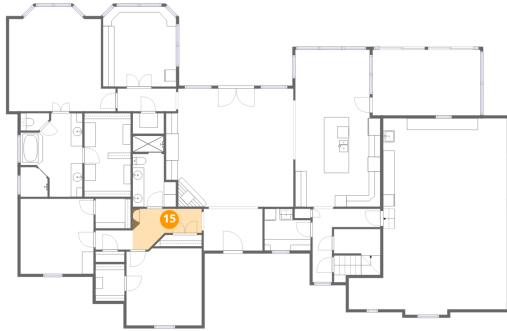


Dimensions: 14'9" x 15'6"
Area: 228 sq. ft
Counted as living area: Yes

Heated: Yes
Finished: Yes
Enclosed: Yes
Contiguous: Yes
Permitted: Yes
Wet space: No
Addition: No
Conversion: No



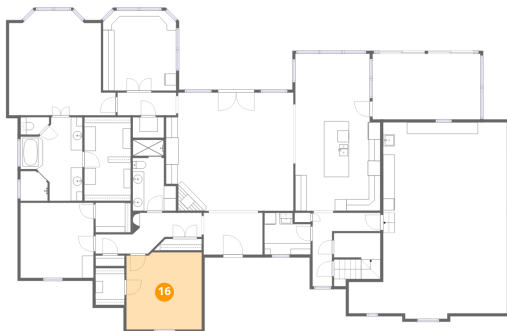
15 Floor 1 - Hall



Dimensions: 12'0" x 7'1"
Area: 62 sq. ft
Counted as living area: Yes

Heated: Yes
Finished: Yes
Enclosed: Yes
Contiguous: Yes
Permitted: Yes
Wet space: No
Addition: No
Conversion: No

16 Floor 1 - Bedroom



Dimensions: 13'1" x 13'4"
Area: 172 sq. ft
Counted as living area: Yes

Heated: Yes
Finished: Yes
Enclosed: Yes
Contiguous: Yes
Permitted: Yes
Wet space: No
Addition: No
Conversion: No

17 Floor 1 - Primary Bath



Dimensions: 10'9" x 14'6"
Area: 138 sq. ft
Counted as living area: Yes

Heated: Yes
Finished: Yes
Enclosed: Yes
Contiguous: Yes
Permitted: Yes
Wet space: Yes
Addition: No
Conversion: No



18 Floor 1 - Screened Porch



Dimensions: 18'8" x 11'5"
Area: 212 sq. ft
Counted as living area: No

Heated: No
Finished: No
Enclosed: No
Contiguous: Yes
Permitted: Yes
Wet space: No
Addition: No
Conversion: No

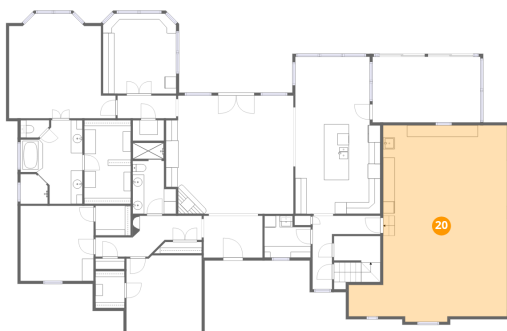
19 Floor 1 - Hall



Dimensions: 10'2" x 3'11"
Area: 40 sq. ft
Counted as living area: Yes

Heated: Yes
Finished: Yes
Enclosed: Yes
Contiguous: Yes
Permitted: Yes
Wet space: No
Addition: No
Conversion: No

20 Floor 1 - Garage

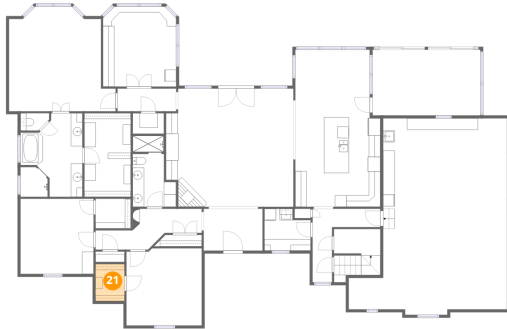


Dimensions: 27'5" x 34'0"
Area: 748 sq. ft
Counted as living area: No

Heated: No
Finished: No
Enclosed: Yes
Contiguous: Yes
Permitted: Yes
Wet space: No
Addition: No
Conversion: No



21 Floor 1 - W.I.C.



Dimensions: 5'0" x 6'5"
Area: 32 sq. ft
Counted as living area: Yes

Heated: Yes
Finished: Yes
Enclosed: Yes
Contiguous: Yes
Permitted: Yes
Wet space: No
Addition: No
Conversion: No

22 Floor 1 - Hall



Dimensions: 11'9" x 12'9"
Area: 69 sq. ft
Counted as living area: Yes

Heated: Yes
Finished: Yes
Enclosed: Yes
Contiguous: Yes
Permitted: Yes
Wet space: No
Addition: No
Conversion: No

23 Floor 2 - Attic



Dimensions: 21'7" x 33'1"
Area: 370 sq. ft
Counted as living area: No

Heated: No
Finished: No
Enclosed: Yes
Contiguous: Yes
Permitted: Yes
Wet space: No
Addition: No
Conversion: No



24 Floor 2 - Attic



Dimensions: 43'10" x 28'1"
Area: 1027 sq. ft
Counted as living area: No

Heated: No
Finished: No
Enclosed: Yes
Contiguous: Yes
Permitted: Yes
Wet space: No
Addition: No
Conversion: No