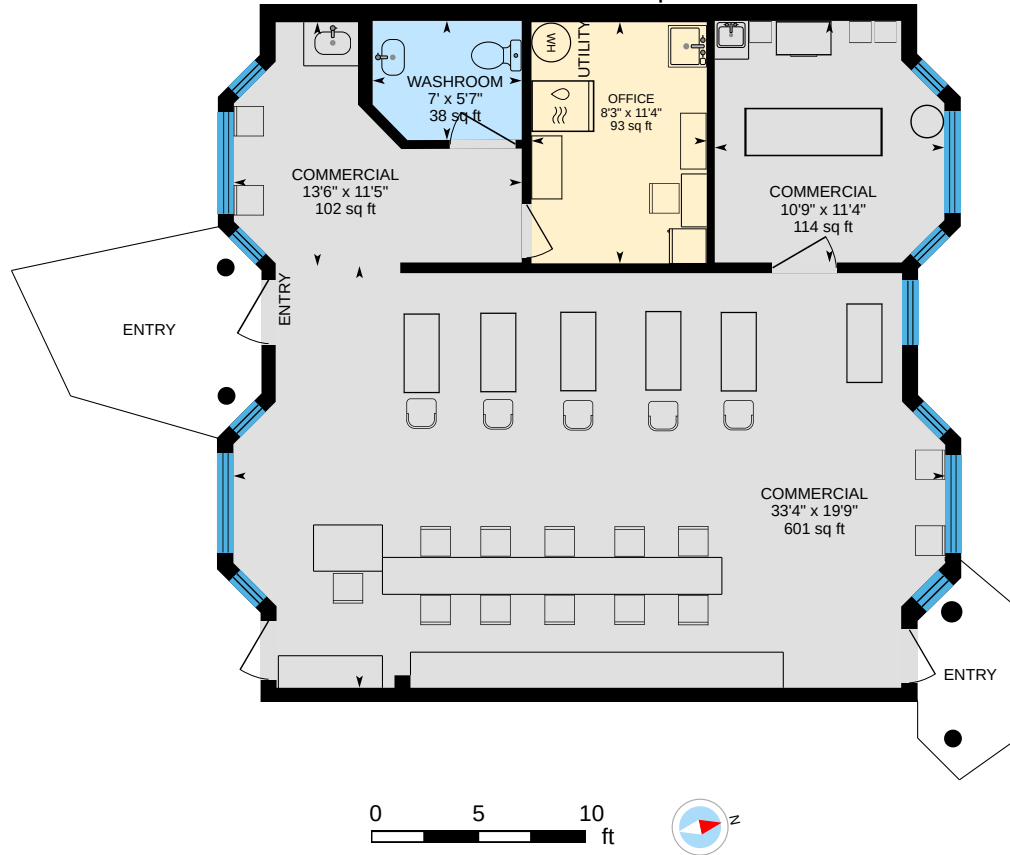




Main Floor (8ft 6in- 15ft 10in)

Exterior Area 1072.97 sq ft



1-155 Morison Ave, Parksville, BC

For illustrative purposes only. All reported dimensions, property sizes and floor areas are approximate and subject to independent verification. To the extent permitted by law, no warranty is made as to accuracy or completeness, and no liability will be accepted for any errors or omissions.