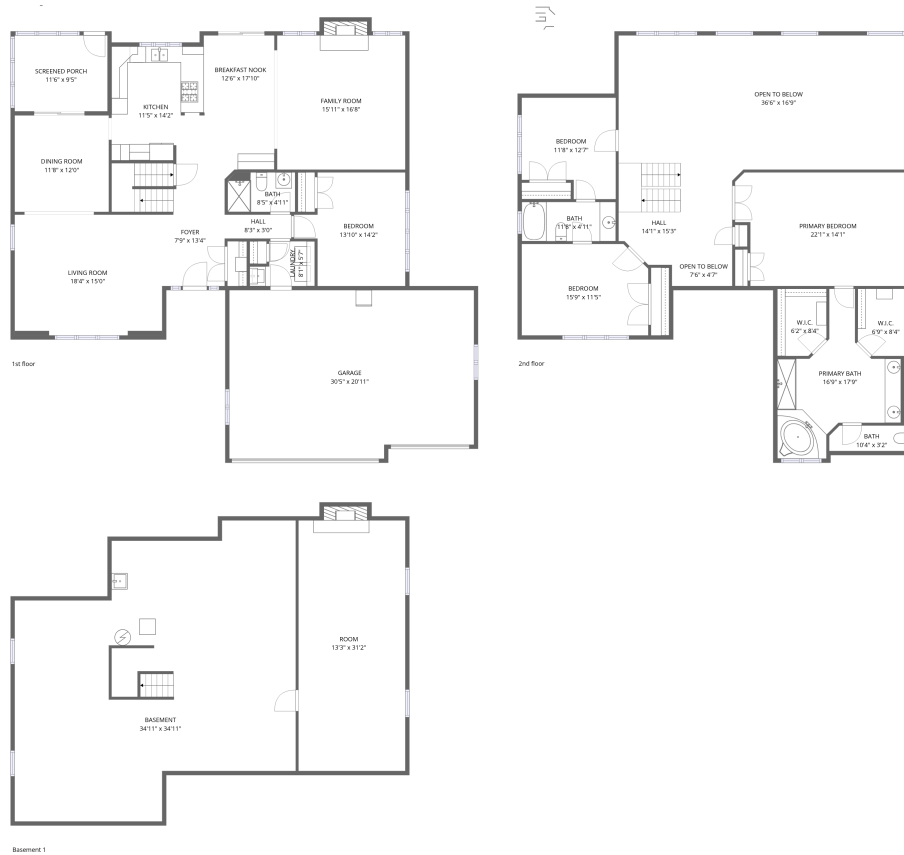


1627 Sauk Drive, Batavia, Kane County, Illinois, United States, 60510

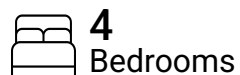


Total Area: 3225 sq. ft

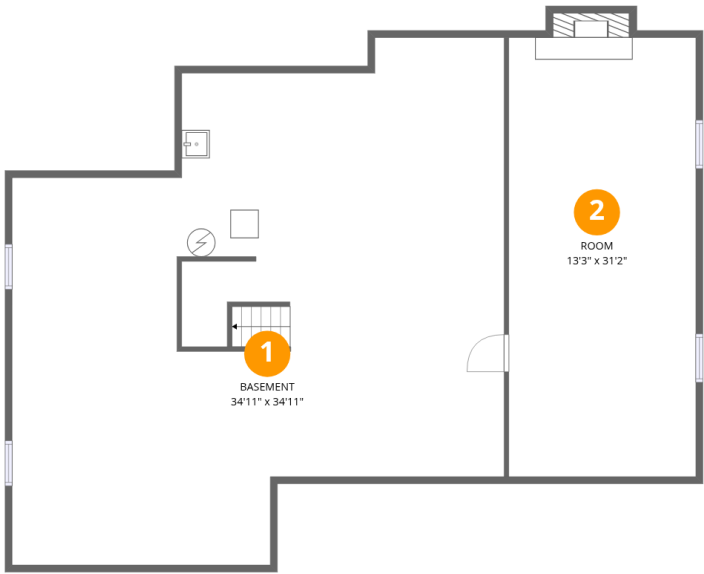
Below Ground: 427 sq. ft, 1st Floor: 1493 sq. ft, 2nd Floor: 1305 sq. ft

Excluded: Basement 1049 sq. ft, Fireplace 22 sq. ft, Garage 618 sq. ft, Screened porch 109 sq. ft, Open to below 577 sq. ft, Walls: 329 sq. ft

Property summary



1627 Sauk Drive, Batavia, Kane County, Illinois, United States, 60510



Room dimensions

Floor 1 Below grade Total:427sqft Excluded: 1060sqft

#		Dimensions	sqft	Counted as living area
1	Basement	34'11" x 34'11"	1049 sq. ft	No
2	Room	13'3" x 31'2"	423 sq. ft	Yes

1627 Sauk Drive, Batavia, Kane County, Illinois, United States, 60510



Room dimensions

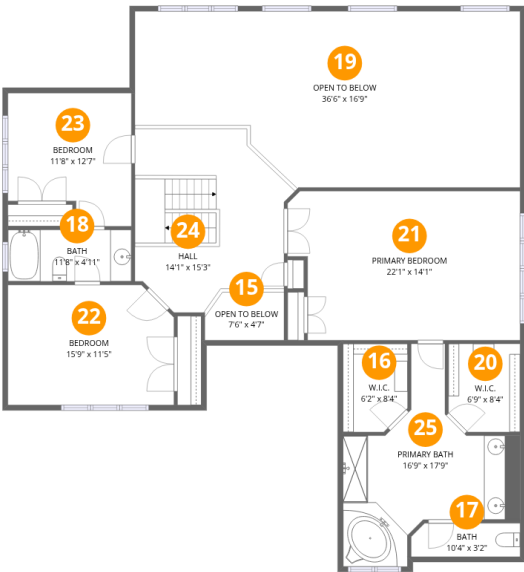
Floor 2 Total:1493sqft Excluded: 738sqft

#		Dimensions	sqft	Counted as living area
3	Laundry	8'1" x 5'7"	38 sq. ft	Yes
4	Dining Room	11'8" x 12'0"	140 sq. ft	Yes
5	Bath	8'5" x 4'11"	41 sq. ft	Yes
6	Kitchen	11'5" x 14'2"	155 sq. ft	Yes
7	Breakfast Nook	12'6" x 17'10"	169 sq. ft	Yes
8	Screened Porch	11'6" x 9'5"	109 sq. ft	No
9	Living Room	18'4" x 15'0"	275 sq. ft	Yes
10	Hall	8'3" x 3'0"	25 sq. ft	Yes
11	Garage	30'5" x 20'11"	618 sq. ft	No
12	Foyer	7'9" x 13'4"	142 sq. ft	Yes
13	Family Room	15'11" x 16'8"	276 sq. ft	Yes

1627 Sauk Drive, Batavia, Kane County, Illinois, United States, 60510

#		Dimensions	sqft	Counted as living area
14	Bedroom	13'10" x 14'2"	163 sq. ft	Yes

1627 Sauk Drive, Batavia, Kane County, Illinois, United States, 60510



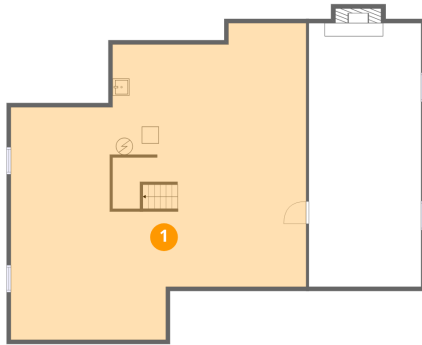
Room dimensions

Floor 3 Total:1305sqft Excluded: 577sqft

#		Dimensions	sqft	Counted as living area
15	Open To Below	7'6" x 4'7"	35 sq. ft	No
16	W.I.C.	6'2" x 8'4"	49 sq. ft	Yes
17	Bath	10'4" x 3'2"	32 sq. ft	Yes
18	Bath	11'8" x 4'11"	57 sq. ft	Yes
19	Open To Below	36'6" x 16'9"	542 sq. ft	No
20	W.I.C.	6'9" x 8'4"	55 sq. ft	Yes
21	Primary Bedroom	22'1" x 14'1"	296 sq. ft	Yes
22	Bedroom	15'9" x 11'5"	174 sq. ft	Yes
23	Bedroom	11'8" x 12'7"	132 sq. ft	Yes
24	Hall	14'1" x 15'3"	214 sq. ft	Yes
25	Primary Bath	16'9" x 17'9"	195 sq. ft	Yes

1627 Sauk Drive, Batavia, Kane County, Illinois, United States, 60510

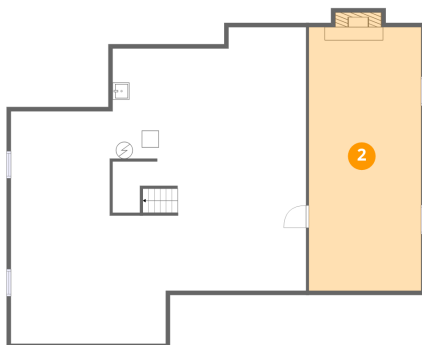
1 Floor 1 - Basement



Dimensions: 34'11" x 34'11"
Area: 1049 sq. ft
Counted as living area: No

Heated: Yes
Finished: No
Enclosed: Yes
Contiguous: Yes
Permitted: Yes
Wet space: No
Addition: No
Conversion: No

2 Floor 1 - Room



Dimensions: 13'3" x 31'2"
Area: 423 sq. ft
Counted as living area: No

Heated: Yes
Finished: Yes
Enclosed: Yes
Contiguous: No
Permitted: Yes
Wet space: No
Addition: No
Conversion: No

1627 Sauk Drive, Batavia, Kane County, Illinois, United States, 60510

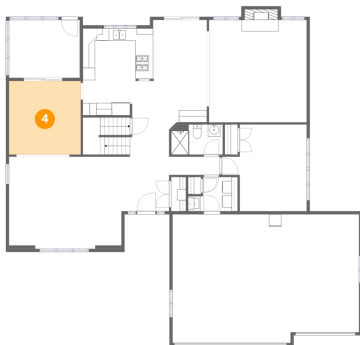
3 Floor 2 - Laundry



Dimensions: 8'1" x 5'7"
Area: 38 sq. ft
Counted as living area: Yes

Heated: Yes
Finished: Yes
Enclosed: Yes
Contiguous: Yes
Permitted: Yes
Wet space: No
Addition: No
Conversion: No

4 Floor 2 - Dining Room



Dimensions: 11'8" x 12'0"
Area: 140 sq. ft
Counted as living area: Yes

Heated: Yes
Finished: Yes
Enclosed: Yes
Contiguous: Yes
Permitted: Yes
Wet space: No
Addition: No
Conversion: No

5 Floor 2 - Bath



Dimensions: 8'5" x 4'11"
Area: 41 sq. ft
Counted as living area: Yes

Heated: Yes
Finished: Yes
Enclosed: Yes
Contiguous: Yes
Permitted: Yes
Wet space: Yes
Addition: No
Conversion: No

1627 Sauk Drive, Batavia, Kane County, Illinois, United States, 60510

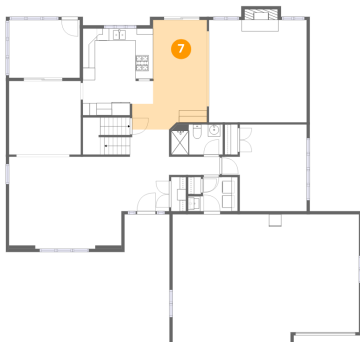
6 Floor 2 - Kitchen



Dimensions: 11'5" x 14'2"
Area: 155 sq. ft
Counted as living area: Yes

Heated: Yes
Finished: Yes
Enclosed: Yes
Contiguous: Yes
Permitted: Yes
Wet space: No
Addition: No
Conversion: No

7 Floor 2 - Breakfast Nook



Dimensions: 12'6" x 17'10"
Area: 169 sq. ft
Counted as living area: Yes

Heated: Yes
Finished: Yes
Enclosed: Yes
Contiguous: Yes
Permitted: Yes
Wet space: No
Addition: No
Conversion: No

8 Floor 2 - Screened Porch



Dimensions: 11'6" x 9'5"
Area: 109 sq. ft
Counted as living area: No

Heated: No
Finished: No
Enclosed: No
Contiguous: Yes
Permitted: Yes
Wet space: No
Addition: No
Conversion: No

1627 Sauk Drive, Batavia, Kane County, Illinois, United States, 60510

9 Floor 2 - Living Room



Dimensions: 18'4" x 15'0"
Area: 275 sq. ft
Counted as living area: Yes

Heated: Yes
Finished: Yes
Enclosed: Yes
Contiguous: Yes
Permitted: Yes
Wet space: No
Addition: No
Conversion: No

10 Floor 2 - Hall



Dimensions: 8'3" x 3'0"
Area: 25 sq. ft
Counted as living area: Yes

Heated: Yes
Finished: Yes
Enclosed: Yes
Contiguous: Yes
Permitted: Yes
Wet space: No
Addition: No
Conversion: No

11 Floor 2 - Garage



Dimensions: 30'5" x 20'11"
Area: 618 sq. ft
Counted as living area: No

Heated: No
Finished: No
Enclosed: Yes
Contiguous: Yes
Permitted: Yes
Wet space: No
Addition: No
Conversion: No

1627 Sauk Drive, Batavia, Kane County, Illinois, United States, 60510

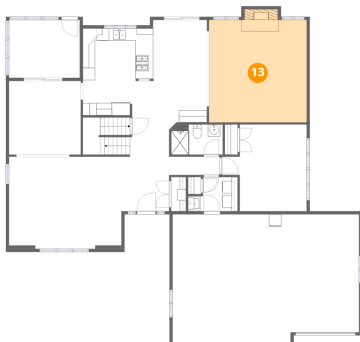
12 Floor 2 - Foyer



Dimensions: 7'9" x 13'4"
Area: 142 sq. ft
Counted as living area: Yes

Heated: Yes
Finished: Yes
Enclosed: Yes
Contiguous: Yes
Permitted: Yes
Wet space: No
Addition: No
Conversion: No

13 Floor 2 - Family Room



Dimensions: 15'11" x 16'8"
Area: 276 sq. ft
Counted as living area: Yes

Heated: Yes
Finished: Yes
Enclosed: Yes
Contiguous: Yes
Permitted: Yes
Wet space: No
Addition: No
Conversion: No

14 Floor 2 - Bedroom

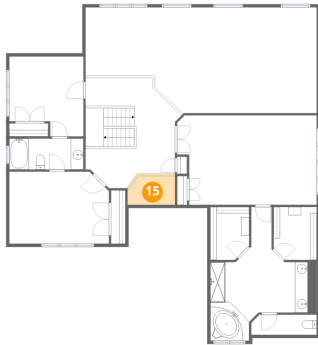


Dimensions: 13'10" x 14'2"
Area: 163 sq. ft
Counted as living area: Yes

Heated: Yes
Finished: Yes
Enclosed: Yes
Contiguous: Yes
Permitted: Yes
Wet space: No
Addition: No
Conversion: No

1627 Sauk Drive, Batavia, Kane County, Illinois, United States, 60510

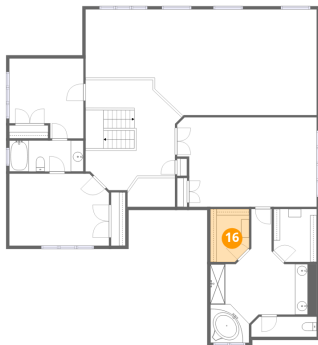
15 Floor 3 - Open To Below



Dimensions: 7'6" x 4'7"
Area: 35 sq. ft
Counted as living area: No

Heated: No
Finished: No
Enclosed: No
Contiguous: Yes
Permitted: No
Wet space: No
Addition: No
Conversion: No

16 Floor 3 - W.I.C.



Dimensions: 6'2" x 8'4"
Area: 49 sq. ft
Counted as living area: Yes

Heated: Yes
Finished: Yes
Enclosed: Yes
Contiguous: Yes
Permitted: Yes
Wet space: No
Addition: No
Conversion: No

17 Floor 3 - Bath

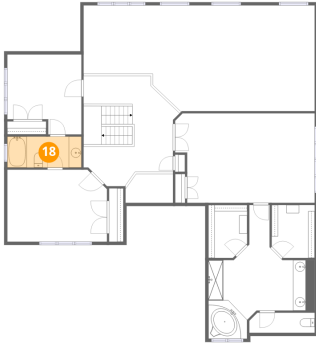


Dimensions: 10'4" x 3'2"
Area: 32 sq. ft
Counted as living area: Yes

Heated: Yes
Finished: Yes
Enclosed: Yes
Contiguous: Yes
Permitted: Yes
Wet space: Yes
Addition: No
Conversion: No

1627 Sauk Drive, Batavia, Kane County, Illinois, United States, 60510

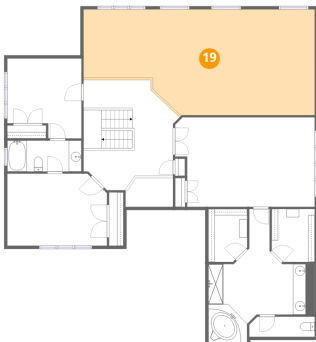
18 Floor 3 - Bath



Dimensions: 11'8" x 4'11"
Area: 57 sq. ft
Counted as living area: Yes

Heated: Yes
Finished: Yes
Enclosed: Yes
Contiguous: Yes
Permitted: Yes
Wet space: Yes
Addition: No
Conversion: No

19 Floor 3 - Open To Below



Dimensions: 36'6" x 16'9"
Area: 542 sq. ft
Counted as living area: No

Heated: No
Finished: No
Enclosed: No
Contiguous: Yes
Permitted: No
Wet space: No
Addition: No
Conversion: No

20 Floor 3 - W.I.C.

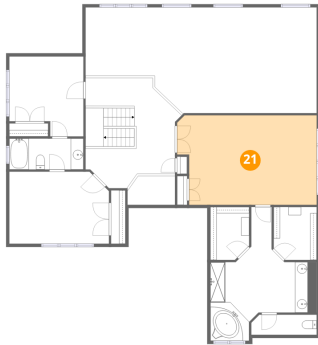


Dimensions: 6'9" x 8'4"
Area: 55 sq. ft
Counted as living area: Yes

Heated: Yes
Finished: Yes
Enclosed: Yes
Contiguous: Yes
Permitted: Yes
Wet space: No
Addition: No
Conversion: No

1627 Sauk Drive, Batavia, Kane County, Illinois, United States, 60510

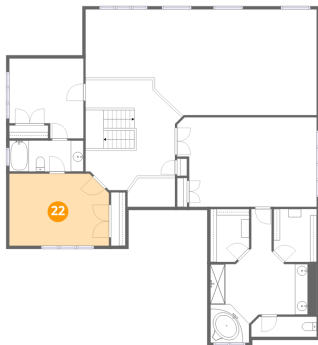
21 Floor 3 - Primary Bedroom



Dimensions: 22'1" x 14'1"
Area: 296 sq. ft
Counted as living area: Yes

Heated: Yes
Finished: Yes
Enclosed: Yes
Contiguous: Yes
Permitted: Yes
Wet space: No
Addition: No
Conversion: No

22 Floor 3 - Bedroom



Dimensions: 15'9" x 11'5"
Area: 174 sq. ft
Counted as living area: Yes

Heated: Yes
Finished: Yes
Enclosed: Yes
Contiguous: Yes
Permitted: Yes
Wet space: No
Addition: No
Conversion: No

23 Floor 3 - Bedroom

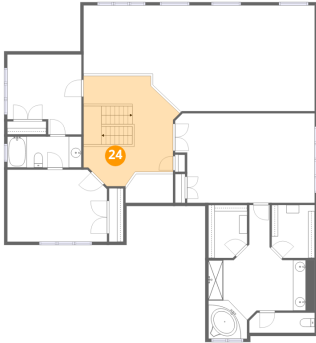


Dimensions: 11'8" x 12'7"
Area: 132 sq. ft
Counted as living area: Yes

Heated: Yes
Finished: Yes
Enclosed: Yes
Contiguous: Yes
Permitted: Yes
Wet space: No
Addition: No
Conversion: No

1627 Sauk Drive, Batavia, Kane County, Illinois, United States, 60510

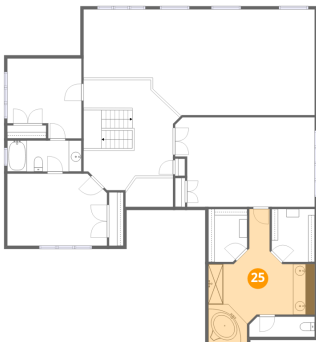
24 Floor 3 - Hall



Dimensions: 14'1" x 15'3"
Area: 214 sq. ft
Counted as living area: Yes

Heated: Yes
Finished: Yes
Enclosed: Yes
Contiguous: Yes
Permitted: Yes
Wet space: No
Addition: No
Conversion: No

25 Floor 3 - Primary Bath



Dimensions: 16'9" x 17'9"
Area: 195 sq. ft
Counted as living area: Yes

Heated: Yes
Finished: Yes
Enclosed: Yes
Contiguous: Yes
Permitted: Yes
Wet space: Yes
Addition: No
Conversion: No