



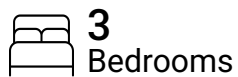
1st floor

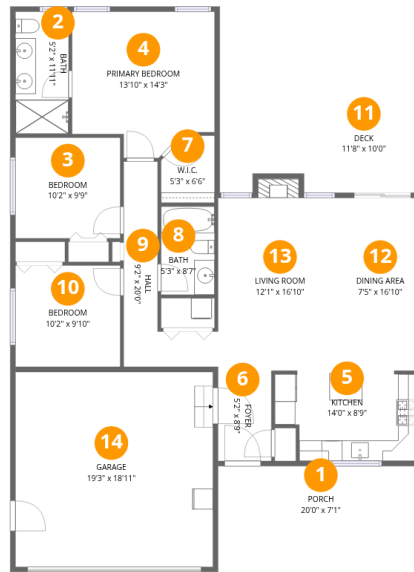
Total Area: 1176 sq. ft

1st Floor: 1176 sq. ft

Excluded: Garage 364 sq. ft, Porch 142 sq. ft, Deck 117 sq. ft, Fireplace 9 sq. ft, Walls: 107 sq. ft

Property summary





Room dimensions

Floor 1

Total:1176sqft

Excluded: 632sqft

#		Dimensions	sqft	Counted as living area
1	Porch	20'0" x 7'1"	142 sq. ft	No
2	Bath	5'2" x 11'11"	62 sq. ft	Yes
3	Bedroom	10'2" x 9'9"	99 sq. ft	Yes
4	Primary Bedroom	13'10" x 14'3"	197 sq. ft	Yes
5	Kitchen	14'0" x 8'9"	123 sq. ft	Yes
6	Foyer	5'2" x 8'9"	46 sq. ft	Yes
7	W.I.C.	5'3" x 6'6"	34 sq. ft	Yes
8	Bath	5'3" x 8'7"	45 sq. ft	Yes
9	Hall	9'2" x 20'0"	183 sq. ft	Yes
10	Bedroom	10'2" x 9'10"	101 sq. ft	Yes
11	Deck	11'8" x 10'0"	117 sq. ft	No

Home data report

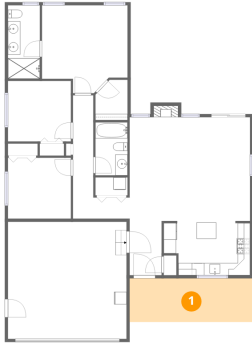
1031 E Mountain Peak Lp,Palmer,AK,US



#		Dimensions	sqft	Counted as living area
12	Dining Area	7'5" x 16'10"	125 sq. ft	Yes
13	Living Room	12'1" x 16'10"	203 sq. ft	Yes
14	Garage	19'3" x 18'11"	364 sq. ft	No



1 Floor 1 - Porch



Dimensions: 20'0" x 7'1"
Area: 142 sq. ft
Counted as living area: No

Heated: No
Finished: No
Enclosed: No
Contiguous: Yes
Permitted: Yes
Wet space: No
Addition: No
Conversion: No

2 Floor 1 - Bath

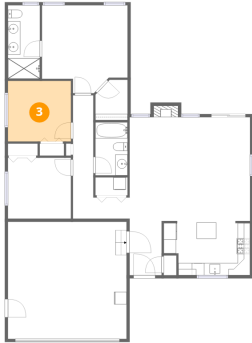


Dimensions: 5'2" x 11'11"
Area: 62 sq. ft
Counted as living area: Yes

Heated: Yes
Finished: Yes
Enclosed: Yes
Contiguous: Yes
Permitted: Yes
Wet space: Yes
Addition: No
Conversion: No



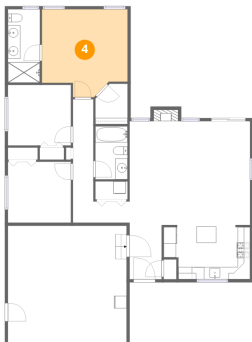
3 Floor 1 - Bedroom



Dimensions: 10'2" x 9'9"
Area: 99 sq. ft
Counted as living area: Yes

Heated: Yes
Finished: Yes
Enclosed: Yes
Contiguous: Yes
Permitted: Yes
Wet space: No
Addition: No
Conversion: No

4 Floor 1 - Primary Bedroom



Dimensions: 13'10" x 14'3"
Area: 197 sq. ft
Counted as living area: Yes

Heated: Yes
Finished: Yes
Enclosed: Yes
Contiguous: Yes
Permitted: Yes
Wet space: No
Addition: No
Conversion: No

5 Floor 1 - Kitchen

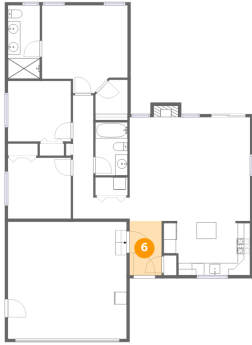


Dimensions: 14'0" x 8'9"
Area: 123 sq. ft
Counted as living area: Yes

Heated: Yes
Finished: Yes
Enclosed: Yes
Contiguous: Yes
Permitted: Yes
Wet space: No
Addition: No
Conversion: No



6 Floor 1 - Foyer



Dimensions: 5'2" x 8'9"
Area: 46 sq. ft
Counted as living area: Yes

Heated: Yes
Finished: Yes
Enclosed: Yes
Contiguous: Yes
Permitted: Yes
Wet space: No
Addition: No
Conversion: No

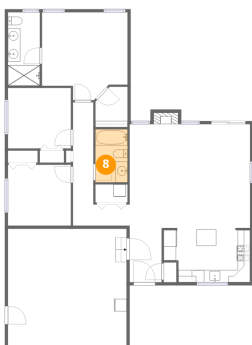
7 Floor 1 - W.I.C.



Dimensions: 5'3" x 6'6"
Area: 34 sq. ft
Counted as living area: Yes

Heated: Yes
Finished: Yes
Enclosed: Yes
Contiguous: Yes
Permitted: Yes
Wet space: No
Addition: No
Conversion: No

8 Floor 1 - Bath

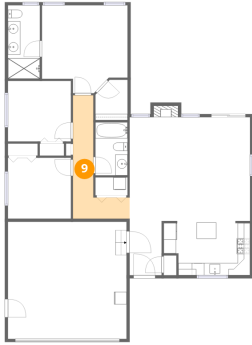


Dimensions: 5'3" x 8'7"
Area: 45 sq. ft
Counted as living area: Yes

Heated: Yes
Finished: Yes
Enclosed: Yes
Contiguous: Yes
Permitted: Yes
Wet space: Yes
Addition: No
Conversion: No



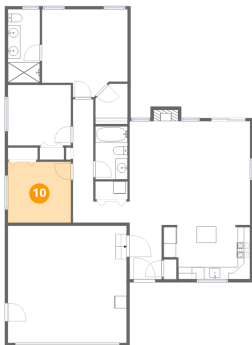
9 Floor 1 - Hall



Dimensions: 9'2" x 20'0"
Area: 183 sq. ft
Counted as living area: Yes

Heated: Yes
Finished: Yes
Enclosed: Yes
Contiguous: Yes
Permitted: Yes
Wet space: No
Addition: No
Conversion: No

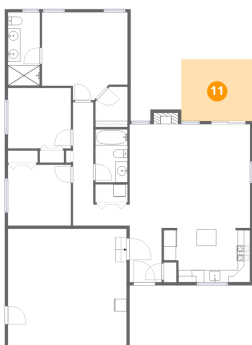
10 Floor 1 - Bedroom



Dimensions: 10'2" x 9'10"
Area: 101 sq. ft
Counted as living area: Yes

Heated: Yes
Finished: Yes
Enclosed: Yes
Contiguous: Yes
Permitted: Yes
Wet space: No
Addition: No
Conversion: No

11 Floor 1 - Deck

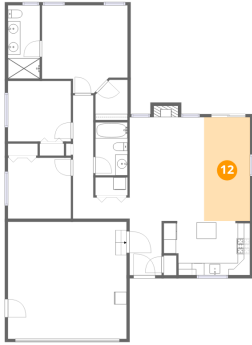


Dimensions: 11'8" x 10'0"
Area: 117 sq. ft
Counted as living area: No

Heated: No
Finished: No
Enclosed: No
Contiguous: Yes
Permitted: Yes
Wet space: No
Addition: No
Conversion: No



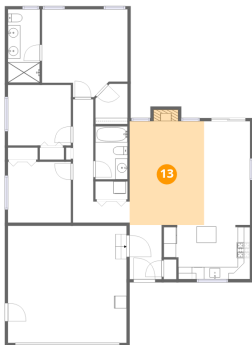
12 Floor 1 - Dining Area



Dimensions: 7'5" x 16'10"
Area: 125 sq. ft
Counted as living area: Yes

Heated: Yes
Finished: Yes
Enclosed: Yes
Contiguous: Yes
Permitted: Yes
Wet space: No
Addition: No
Conversion: No

13 Floor 1 - Living Room



Dimensions: 12'1" x 16'10"
Area: 203 sq. ft
Counted as living area: Yes

Heated: Yes
Finished: Yes
Enclosed: Yes
Contiguous: Yes
Permitted: Yes
Wet space: No
Addition: No
Conversion: No

14 Floor 1 - Garage



Dimensions: 19'3" x 18'11"
Area: 364 sq. ft
Counted as living area: No

Heated: No
Finished: No
Enclosed: Yes
Contiguous: Yes
Permitted: Yes
Wet space: No
Addition: No
Conversion: No