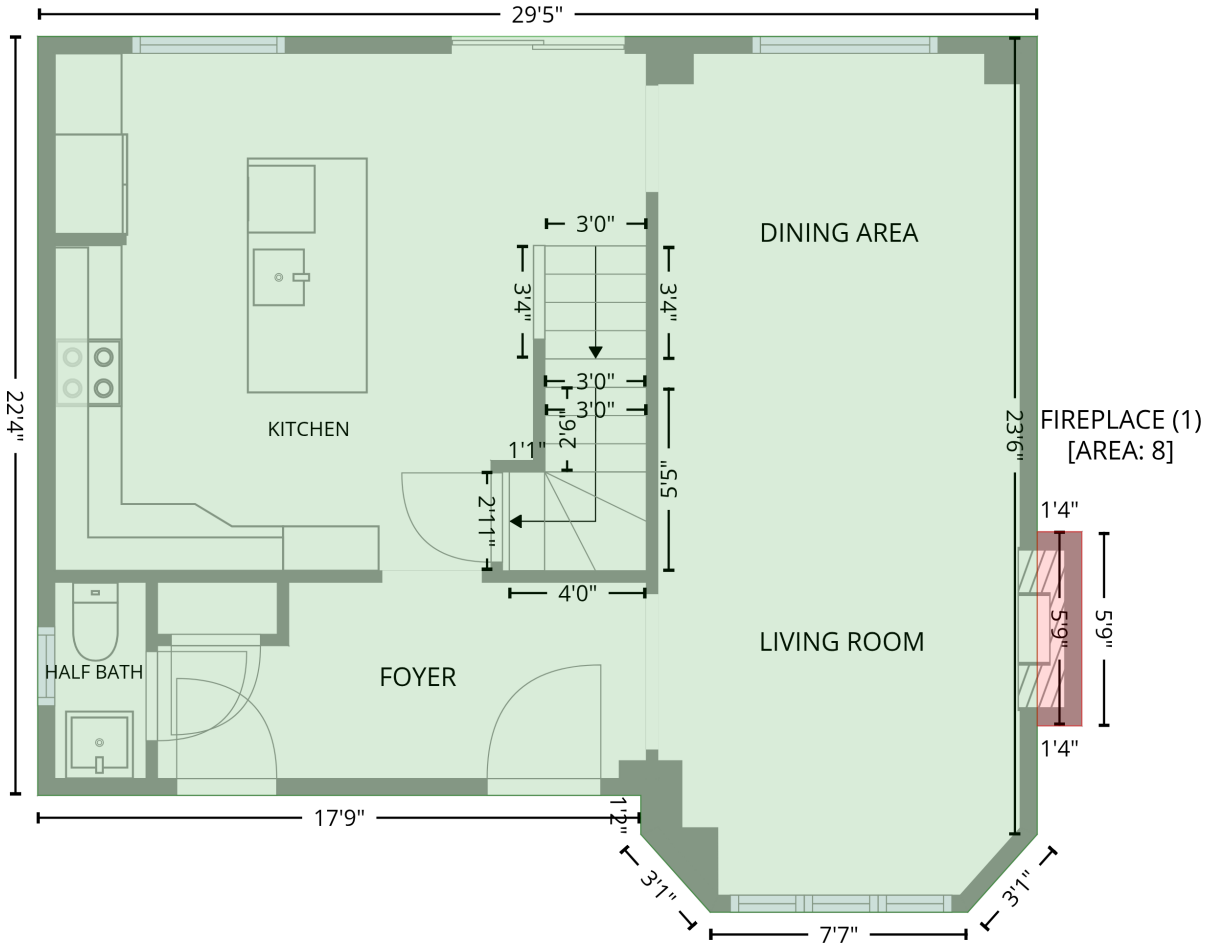


57 Dean Avenue, Painswick South, Painswick, Barrie, Simcoe County, Ontario, Canada, L4N 0C2

Gross Living Area: 2026 sq. ft

Level 2

2nd floor
[AREA: 694]



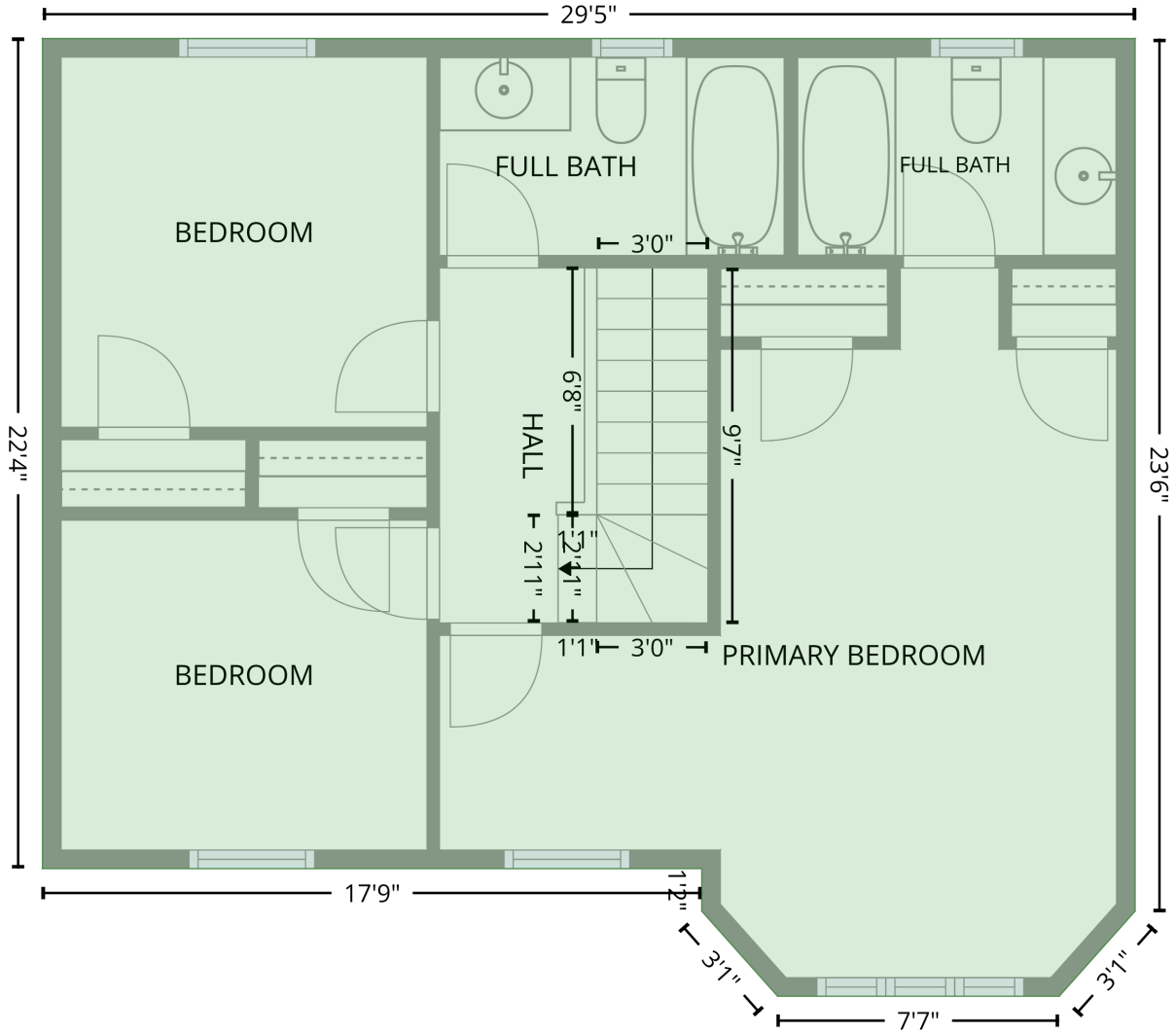
Space	Area (sq. ft)	Calculation <small>Coordinate Polygon Area Algorithm using inches</small>
2nd floor (Living area)	694	$-\left((362.2 + 362.2) * (1.6 - 283.6) + (362.2 + 337.7) * (283.6 - 311.2) + (337.7 + 246.6) * (311.2 - 311.2) + (246.6 + 222.1) * (311.2 - 283.6) + (222.1 + 222.1) * (283.6 - 269.9) + (222.1 + 9) * (269.9 - 269.9) + (9 + 9) * (269.9 - 1.6) + (9 + 362.2) * (1.6 - 1.6)\right) * 0.5 * 0.00694$
FIREPLACE (Non-living area)	8	$-\left((378 + 378) * (176.7 - 245.3) + (378 + 362.2) * (245.3 - 245.3) + (362.2 + 362.2) * (245.3 - 176.7) + (362.2 + 378) * (176.7 - 176.7)\right) * 0.5 * 0.00694$

57 Dean Avenue, Painswick South, Painswick, Barrie, Simcoe County, Ontario, Canada, L4N 0C2

Gross Living Area: 2026 sq. ft

Level 3

3rd floor
[AREA: 694]



Space	Area (sq. ft)	Calculation <small>Coordinate Polygon Area Algorithm using inches</small>
3rd floor (Living area)	694	$-\left((362.2 + 362.2) * (1.6 - 283.6) + (362.2 + 337.7) * (283.6 - 311.2) + (337.7 + 246.6) * (311.2 - 311.2) + (246.6 + 222.1) * (311.2 - 283.6) + (222.1 + 222.1) * (283.6 - 269.9) + (222.1 + 9) * (269.9 - 269.9) + (9 + 9) * (269.9 - 1.6) + (9 + 362.2) * (1.6 - 1.6)\right) * 0.5 * 0.00694$