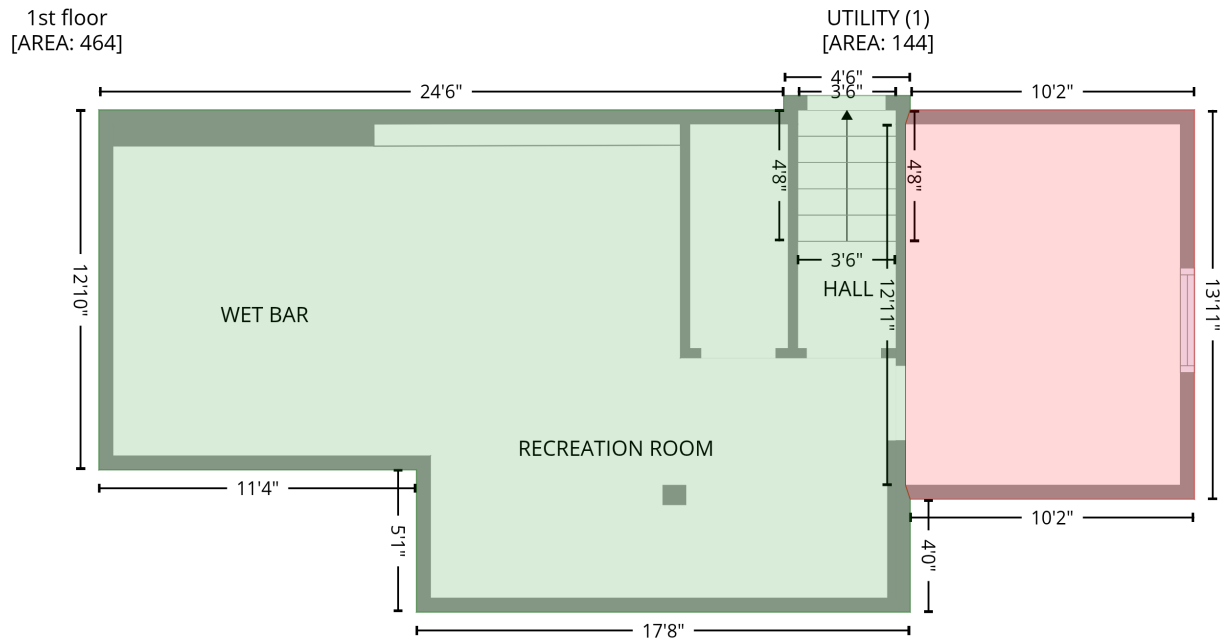


# 11707 W Prentice Dr, Littleton, CO, US

Gross Living Area: 2223 sq. ft

## Level 1

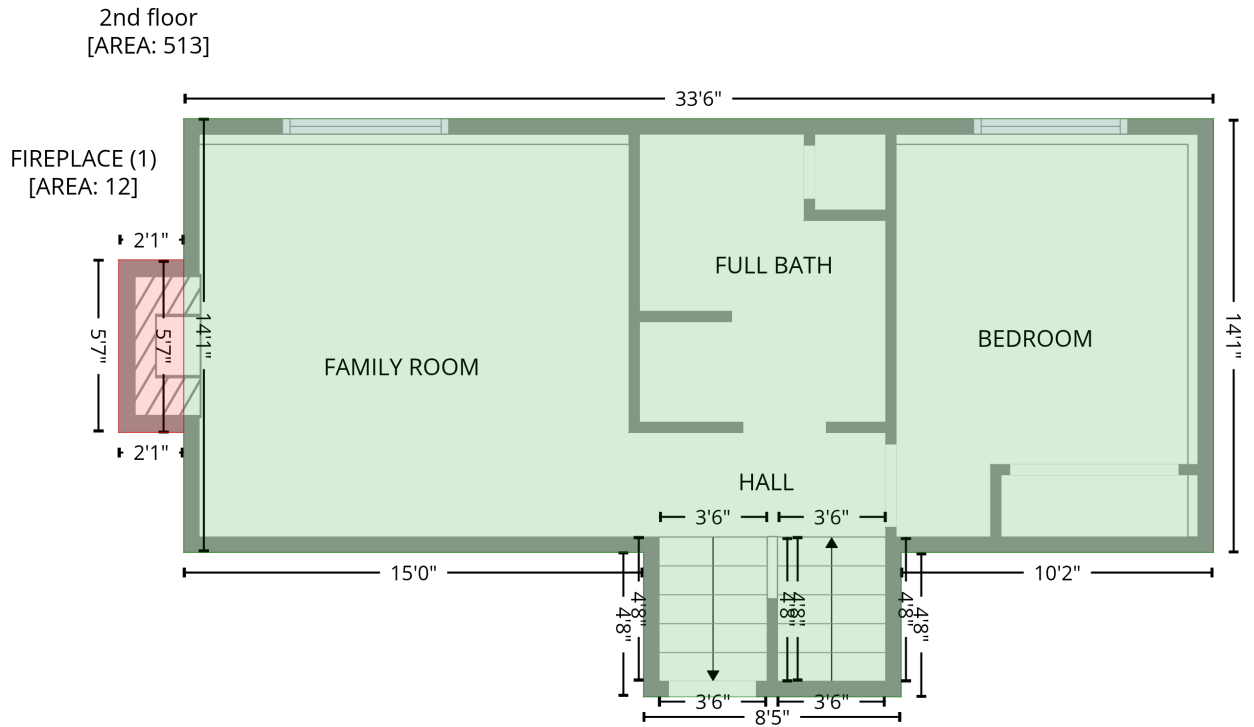


Space	Area (sq. ft)	Calculation <small>Coordinate Polygon Area Algorithm using inches</small>
1st floor (Living area)	464	$-\left((480.3 + 480.3) * (179.6 - 185.7) + (480.3 + 478.3) * (185.7 - 191.7) + (478.3 + 478.3) * (191.7 - 346.7) + (478.3 + 480.3) * (346.7 - 352.7) + (480.3 + 480.3) * (352.7 - 401.2) + (480.3 + 268.2) * (401.2 - 401.2) + (268.2 + 268.2) * (401.2 - 340.2) + (268.2 + 131.8) * (340.2 - 340.2) + (131.8 + 131.8) * (340.2 - 185.7) + (131.8 + 425.9) * (185.7 - 185.7) + (425.9 + 425.9) * (185.7 - 179.6) + (425.9 + 480.3) * (179.6 - 179.6)\right) * 0.5 * 0.00694$
UTILITY (Non-living area)	144	$-\left((602.3 + 602.3) * (185.7 - 352.7) + (602.3 + 480.3) * (352.7 - 352.7) + (480.3 + 478.3) * (352.7 - 346.7) + (478.3 + 478.3) * (346.7 - 191.7) + (478.3 + 480.3) * (191.7 - 185.7) + (480.3 + 602.3) * (185.7 - 185.7)\right) * 0.5 * 0.00694$

# 11707 W Prentice Dr, Littleton, CO, US

Gross Living Area: 2223 sq. ft

## Level 2

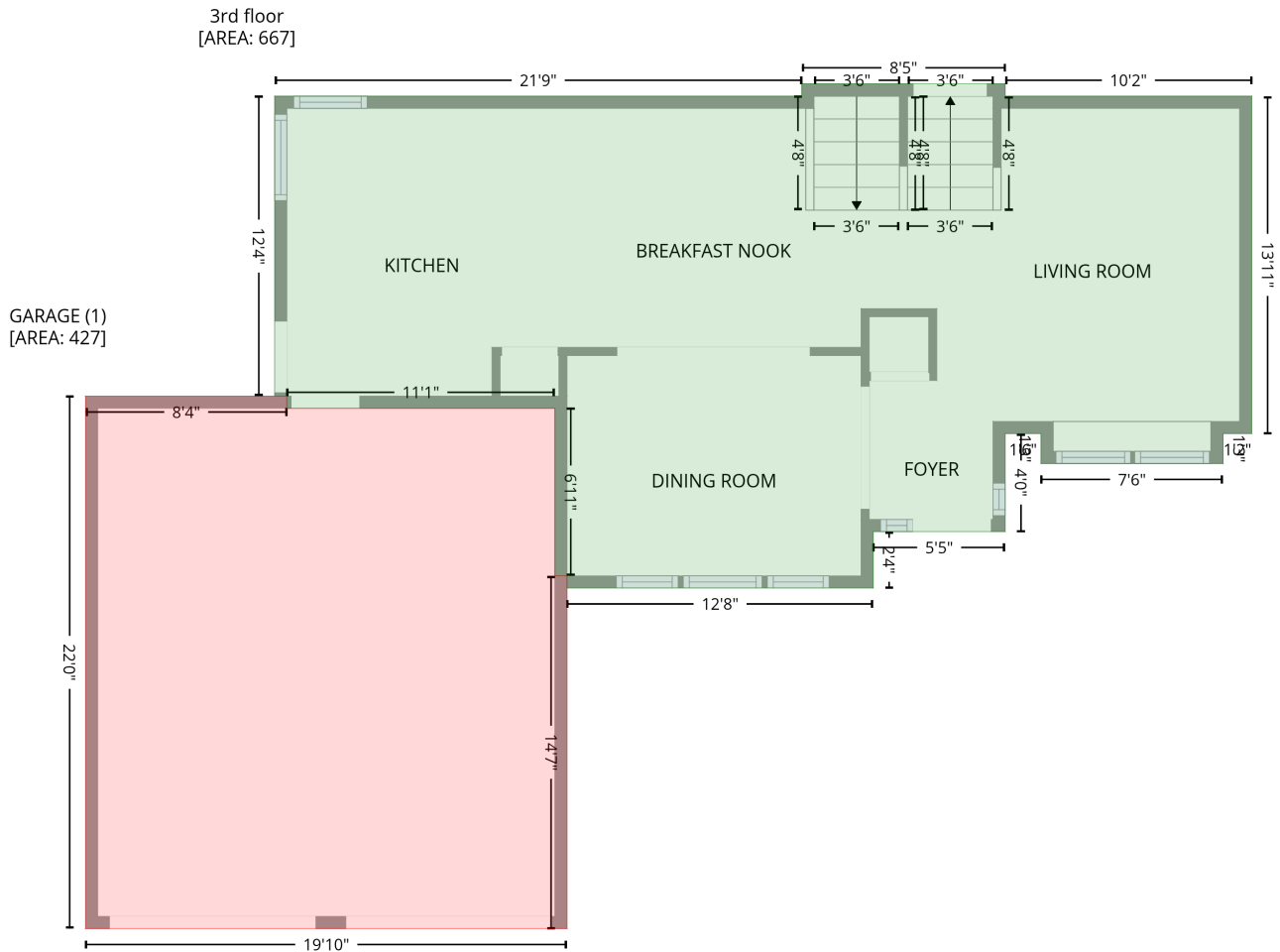


Space	Area (sq. ft)	Calculation <small>Coordinate Polygon Area Algorithm using inches</small>
2nd floor (Living area)	513	$-\left(\left(602.3 + 602.3\right) * \left(22.3 - 191.7\right) + \left(602.3 + 480.3\right) * \left(191.7 - 191.7\right) + \left(480.3 + 480.3\right) * \left(191.7 - 248.1\right) + \left(480.3 + 379.6\right) * \left(248.1 - 248.1\right) + \left(379.6 + 379.6\right) * \left(248.1 - 191.7\right) + \left(379.6 + 199.9\right) * \left(191.7 - 191.7\right) + \left(199.9 + 199.9\right) * \left(191.7 - 22.3\right) + \left(199.9 + 602.3\right) * \left(22.3 - 22.3\right)\right) * 0.5 * 0.00694$
FIREPLACE (Non-living area)	12	$-\left(\left(199.9 + 199.9\right) * \left(77.5 - 144.9\right) + \left(199.9 + 174.5\right) * \left(144.9 - 144.9\right) + \left(174.5 + 174.5\right) * \left(144.9 - 77.5\right) + \left(174.5 + 199.9\right) * \left(77.5 - 77.5\right)\right) * 0.5 * 0.00694$

# 11707 W Prentice Dr, Littleton, CO, US

Gross Living Area: 2223 sq. ft

## Level 3



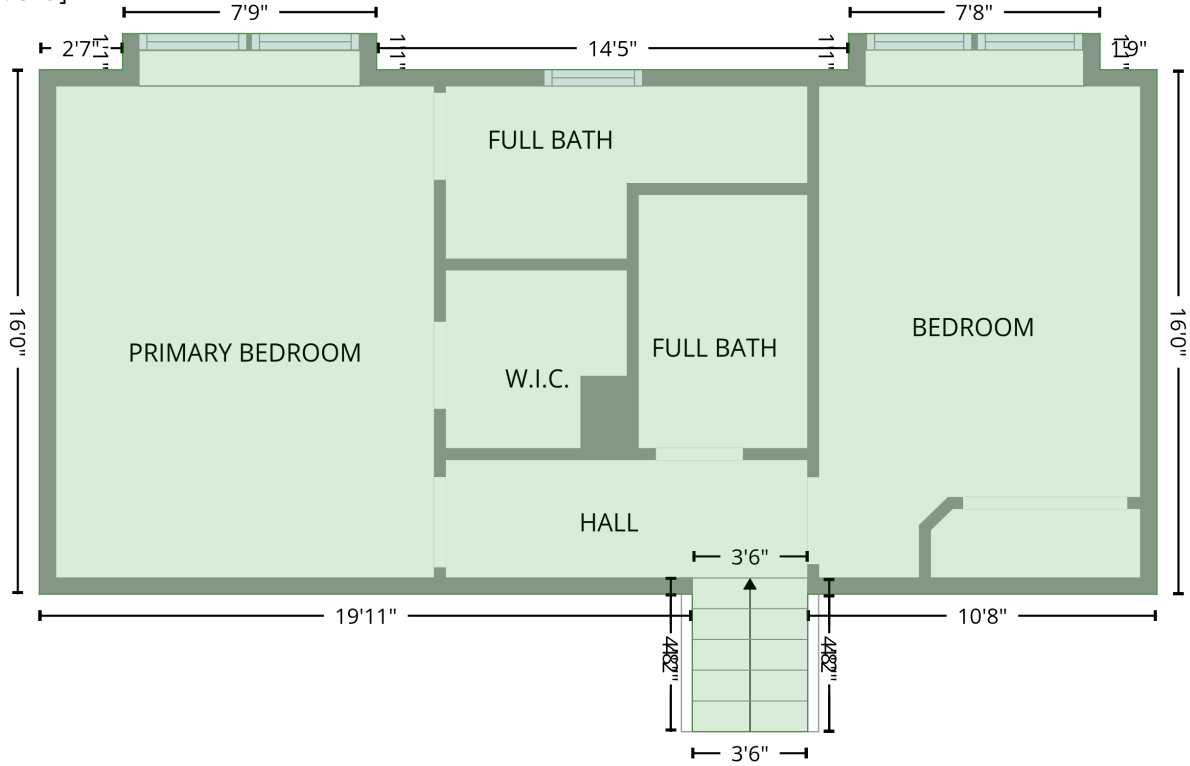
Space	Area (sq. ft)	Calculation
3rd floor (Living area)	667	Coordinate Polygon Area Algorithm using inches $-((480.3 + 480.3) * (179.6 - 185.7) + (480.3 + 602.3) * (185.7 - 185.7) + (602.3 + 602.3) * (185.7 - 352.7) + (602.3 + 588.1) * (352.7 - 352.7) + (588.1 + 588.1) * (352.7 - 367.5) + (588.1 + 498) * (367.5 - 367.5) + (498 + 498) * (367.5 - 352.7) + (498 + 480.3) * (352.7 - 352.7) + (480.3 + 480.3) * (352.7 - 401.2) + (480.3 + 415) * (401.2 - 401.2) + (415 + 415) * (401.2 - 429.1) + (415 + 263.4) * (429.1 - 429.1) + (263.4 + 263.4) * (429.1 - 423.1) + (263.4 + 257.4) * (423.1 - 423.1) + (257.4 + 257.4) * (423.1 - 340.2) + (257.4 + 124.7) * (340.2 - 340.2) + (124.7 + 124.7) * (340.2 - 334.2) + (124.7 + 118.7) * (334.2 - 334.2) + (118.7 + 118.7) * (334.2 - 185.7) + (118.7 + 379.6) * (185.7 - 185.7) + (379.6 + 379.6) * (185.7 - 179.6) + (379.6 + 480.3) * (179.6 - 179.6)) * 0.5 + 0.00694$
GARAGE (Non-living area)	427	$-((124.7 + 124.7) * (334.2 - 340.2) + (124.7 + 257.4) * (340.2 - 340.2) + (257.4 + 257.4) * (340.2 - 423.1) + (257.4 + 263.4) * (423.1 - 423.1) + (263.4 + 263.4) * (423.1 - 597.7) + (263.4 + 25.1) * (597.7 - 597.7) + (25.1 + 25.1) * (597.7 - 334.2) + (25.1 + 124.7) * (334.2 - 334.2)) * 0.5 + 0.00694$

# 11707 W Prentice Dr, Littleton, CO, US

Gross Living Area: 2223 sq. ft

## Level 4

4th floor  
[AREA: 579]



Space	Area (sq. ft)	Calculation <small>Coordinate Polygon Area Algorithm using inches</small>
4th floor (Living area)	579	$  \begin{aligned}  & -((316.2 + 316.2) * (-13.8 - -0.6) + (316.2 + 489.2) * (-0.6 - -0.6) + (489.2 + 489.2) * (-0.6 - -13.8) + \\  & (489.2 + 581.5) * (-13.8 - -13.8) + (581.5 + 581.5) * (-13.8 - -0.6) + (581.5 + 602.3) * (-0.6 - -0.6) + \\  & (602.3 + 602.3) * (-0.6 - 191.7) + (602.3 + 474.3) * (191.7 - 191.7) + (474.3 + 474.3) * (191.7 - \\  & 242.1) + (474.3 + 431.9) * (242.1 - 242.1) + (431.9 + 431.9) * (242.1 - 191.7) + (431.9 + 192.5) * \\  & (191.7 - 191.7) + (192.5 + 192.5) * (191.7 - -0.6) + (192.5 + 223) * (-0.6 - -0.6) + (223 + 223) * \\  & (-0.6 - -13.8) + (223 + 316.2) * (-13.8 - -13.8)) * 0.5 * 0.00694  \end{aligned}  $