

## Home data report

**344 Mallow Lake Drive, Davis, Tucker County, West Virginia,  
United States, 26260**



**Total Area: 3978 sq. ft**

Basement: 1431 sq. ft, 1st Floor: 2077 sq. ft, 2nd Floor: 470 sq. ft

Excluded: Electrical room 153 sq. ft, Covered patio 281 sq. ft, Storage 246 sq. ft, Fireplace 16 sq. ft, Balcony 140 sq. ft, Porch 74 sq. ft, Screened porch 246 sq. ft, Low ceiling 19 sq. ft, Open to below 233 sq. ft, Walls: 316 sq. ft

## Property summary



Home data report

**344 Mallow Lake Drive, Davis, Tucker County, West Virginia,  
United States, 26260**



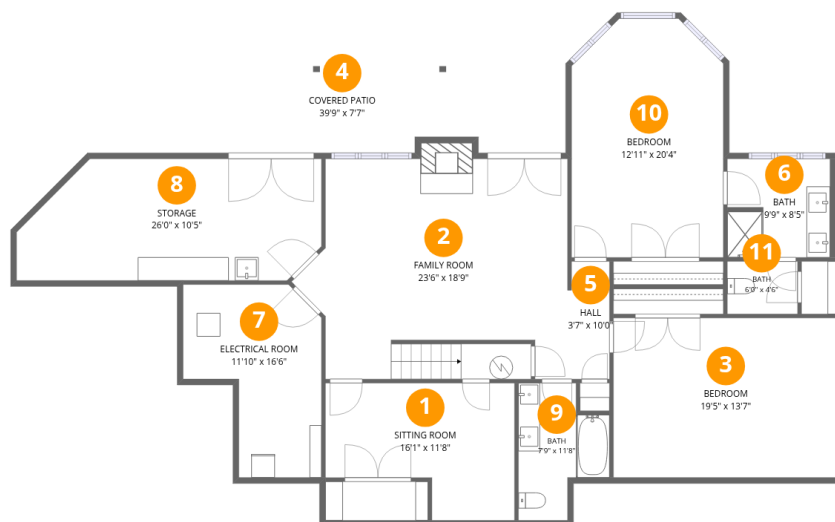
**1**  
Half baths



**1**  
Garages

Home data report

344 Mallow Lake Drive, Davis, Tucker County, West Virginia, United States, 26260



## Room dimensions

Floor 1 Below grade

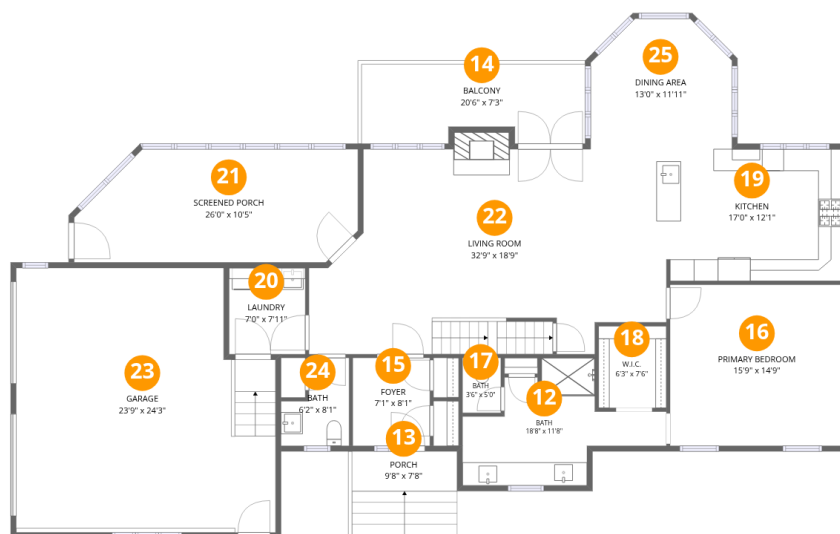
Total:1431sqft

Excluded: 687sqft

#		Dimensions	sqft	Counted as living area
1	Sitting Room	16'1" x 11'8"	156 sq. ft	Yes
2	Family Room	23'6" x 18'9"	380 sq. ft	Yes
3	Bedroom	19'5" x 13'7"	265 sq. ft	Yes
4	Covered Patio	39'9" x 7'7"	281 sq. ft	No
5	Hall	3'7" x 10'0"	35 sq. ft	Yes
6	Bath	9'9" x 8'5"	81 sq. ft	Yes
7	Electrical Room	11'10" x 16'6"	150 sq. ft	No
8	Storage	26'0" x 10'5"	246 sq. ft	No
9	Bath	7'9" x 11'8"	70 sq. ft	Yes
10	Bedroom	12'11" x 20'4"	248 sq. ft	Yes
11	Bath	6'0" x 4'6"	27 sq. ft	Yes

## Home data report

344 Mallow Lake Drive, Davis, Tucker County, West Virginia,  
United States, 26260



## Room dimensions

Floor 2

Total:2077sqft Excluded: 469sqft

#		Dimensions	sqft	Counted as living area
12	Bath	18'8" x 11'8"	133 sq. ft	Yes
13	Porch	9'8" x 7'8"	74 sq. ft	No
14	Balcony	20'6" x 7'3"	140 sq. ft	No
15	Foyer	7'1" x 8'1"	57 sq. ft	Yes
16	Primary Bedroom	15'9" x 14'9"	232 sq. ft	Yes
17	Bath	3'6" x 5'0"	18 sq. ft	Yes
18	W.I.C.	6'3" x 7'6"	47 sq. ft	Yes
19	Kitchen	17'0" x 12'1"	203 sq. ft	Yes
20	Laundry	7'0" x 7'11"	55 sq. ft	Yes
21	Screened Porch	26'0" x 10'5"	246 sq. ft	No
22	Living Room	32'9" x 18'9"	543 sq. ft	Yes

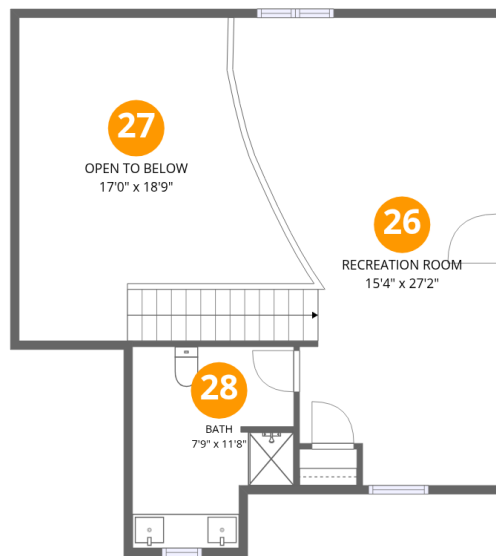
Home data report

**344 Mallow Lake Drive, Davis, Tucker County, West Virginia,  
United States, 26260**

#		Dimensions	sqft	Counted as living area
23	Garage	23'9" x 24'3"	536 sq. ft	Yes
24	Bath	6'2" x 8'1"	40 sq. ft	Yes
25	Dining Area	13'0" x 11'11"	139 sq. ft	Yes

Home data report

344 Mallow Lake Drive, Davis, Tucker County, West Virginia,  
United States, 26260



### Room dimensions

Floor 3

Total:470sqft Excluded: 252sqft

#		Dimensions	sqft	Counted as living area
26	Recreation Room	15'4" x 27'2"	376 sq. ft	Yes
27	Open To Below	17'0" x 18'9"	233 sq. ft	No
28	Bath	7'9" x 11'8"	78 sq. ft	Yes

344 Mallow Lake Drive, Davis, Tucker County, West Virginia,  
United States, 26260

**1** Floor 1 - Sitting Room

---

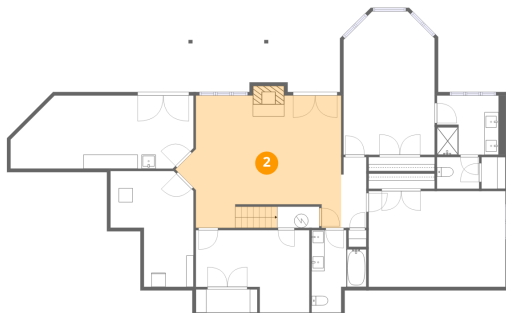


Dimensions: 16'1" x 11'8"  
Area: 156 sq. ft  
Counted as living area: Yes

Heated: Yes  
Finished: Yes  
Enclosed: Yes  
Contiguous: Yes  
Permitted: Yes  
Wet space: No  
Addition: No  
Conversion: No

**2** Floor 1 - Family Room

---

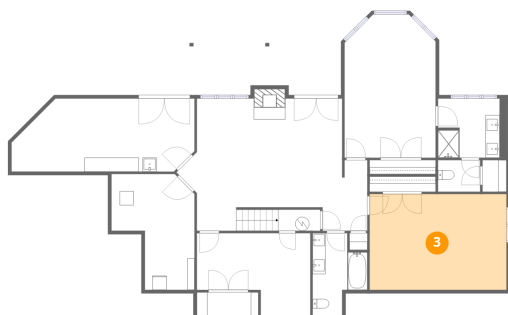


Dimensions: 23'6" x 18'9"  
Area: 380 sq. ft  
Counted as living area: Yes

Heated: Yes  
Finished: Yes  
Enclosed: Yes  
Contiguous: Yes  
Permitted: Yes  
Wet space: No  
Addition: No  
Conversion: No

344 Mallow Lake Drive, Davis, Tucker County, West Virginia,  
United States, 26260

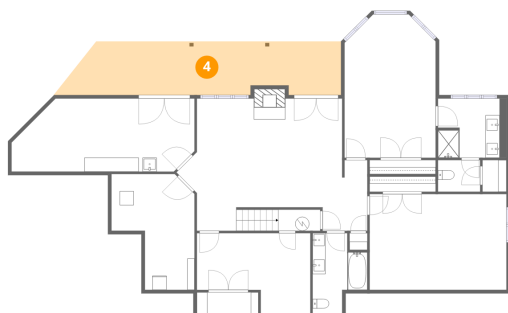
**3** Floor 1 - Bedroom



Dimensions: 19'5" x 13'7"  
Area: 265 sq. ft  
Counted as living area: Yes

Heated: Yes  
Finished: Yes  
Enclosed: Yes  
Contiguous: Yes  
Permitted: Yes  
Wet space: No  
Addition: No  
Conversion: No

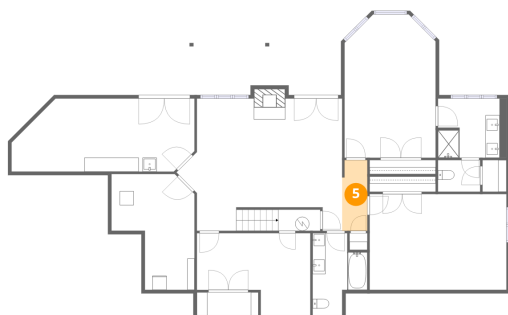
**4** Floor 1 - Covered Patio



Dimensions: 39'9" x 7'7"  
Area: 281 sq. ft  
Counted as living area: No

Heated: No  
Finished: No  
Enclosed: No  
Contiguous: Yes  
Permitted: Yes  
Wet space: No  
Addition: No  
Conversion: No

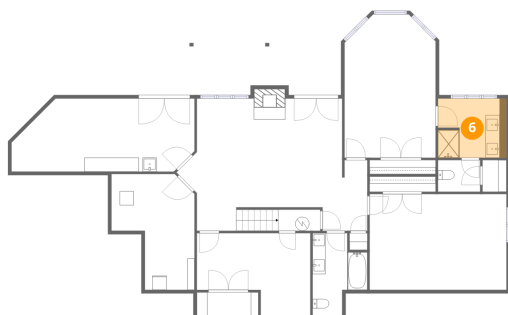
**5** Floor 1 - Hall



Dimensions: 3'7" x 10'0"  
Area: 35 sq. ft  
Counted as living area: Yes

Heated: Yes  
Finished: Yes  
Enclosed: Yes  
Contiguous: Yes  
Permitted: Yes  
Wet space: No  
Addition: No  
Conversion: No

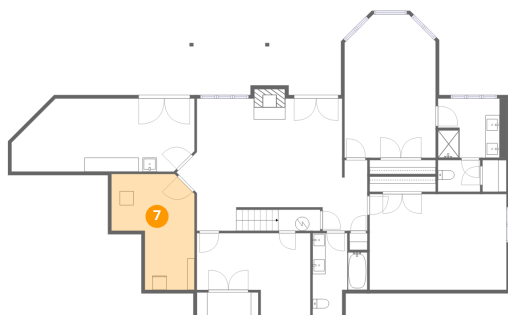
### 6 Floor 1 - Bath



Dimensions: 9'9" x 8'5"  
Area: 81 sq. ft  
Counted as living area: Yes

Heated: Yes  
Finished: Yes  
Enclosed: Yes  
Contiguous: Yes  
Permitted: Yes  
Wet space: Yes  
Addition: No  
Conversion: No

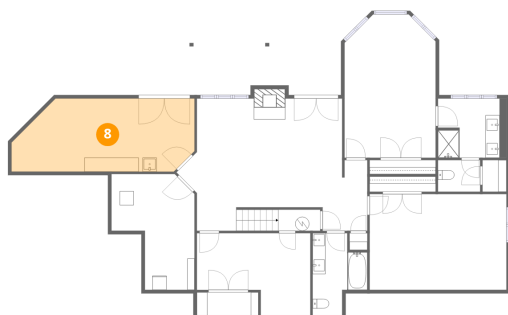
### 7 Floor 1 - Electrical Room



Dimensions: 11'10" x 16'6"  
Area: 150 sq. ft  
Counted as living area: No

Heated: No  
Finished: No  
Enclosed: Yes  
Contiguous: Yes  
Permitted: Yes  
Wet space: No  
Addition: No  
Conversion: No

### 8 Floor 1 - Storage

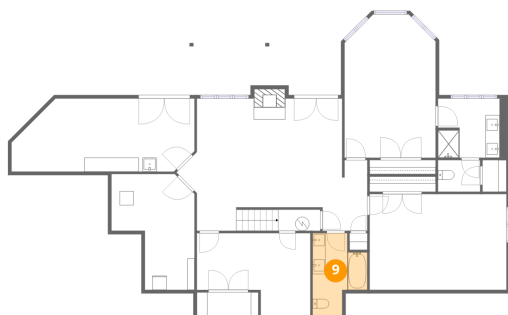


Dimensions: 26'0" x 10'5"  
Area: 246 sq. ft  
Counted as living area: No

Heated: No  
Finished: No  
Enclosed: No  
Contiguous: Yes  
Permitted: Yes  
Wet space: No  
Addition: No  
Conversion: No

344 Mallow Lake Drive, Davis, Tucker County, West Virginia,  
United States, 26260

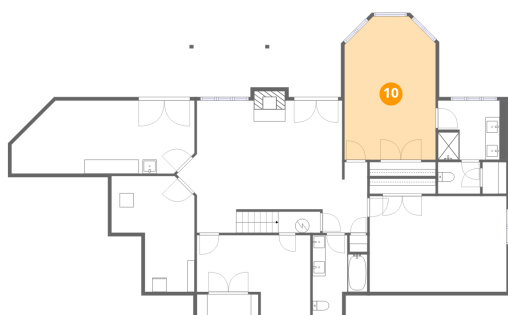
### 9 Floor 1 - Bath



Dimensions: 7'9" x 11'8"  
Area: 70 sq. ft  
Counted as living area: Yes

Heated: Yes  
Finished: Yes  
Enclosed: Yes  
Contiguous: Yes  
Permitted: Yes  
Wet space: Yes  
Addition: No  
Conversion: No

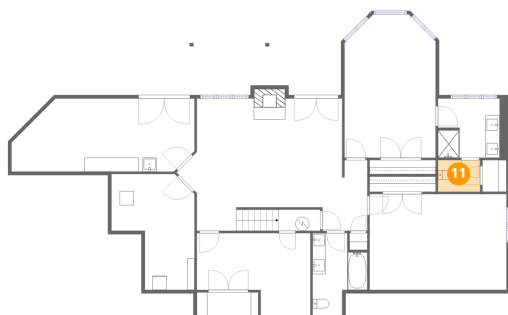
### 10 Floor 1 - Bedroom



Dimensions: 12'11" x 20'4"  
Area: 248 sq. ft  
Counted as living area: Yes

Heated: Yes  
Finished: Yes  
Enclosed: Yes  
Contiguous: Yes  
Permitted: Yes  
Wet space: No  
Addition: No  
Conversion: No

### 11 Floor 1 - Bath



Dimensions: 6'0" x 4'6"  
Area: 27 sq. ft  
Counted as living area: Yes

Heated: Yes  
Finished: Yes  
Enclosed: Yes  
Contiguous: Yes  
Permitted: Yes  
Wet space: Yes  
Addition: No  
Conversion: No

344 Mallow Lake Drive, Davis, Tucker County, West Virginia,  
United States, 26260

**12** Floor 2 - Bath



Dimensions: 18'8" x 11'8"  
Area: 133 sq. ft  
Counted as living area: Yes

Heated: Yes  
Finished: Yes  
Enclosed: Yes  
Contiguous: Yes  
Permitted: Yes  
Wet space: Yes  
Addition: No  
Conversion: No

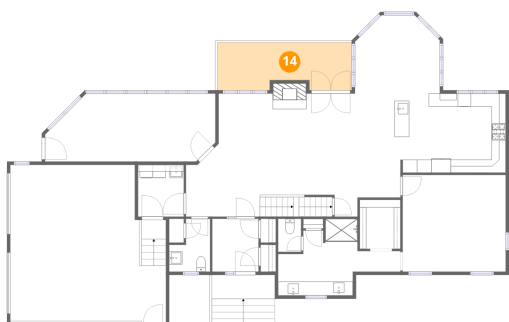
**13** Floor 2 - Porch



Dimensions: 9'8" x 7'8"  
Area: 74 sq. ft  
Counted as living area: No

Heated: No  
Finished: No  
Enclosed: No  
Contiguous: Yes  
Permitted: Yes  
Wet space: No  
Addition: No  
Conversion: No

**14** Floor 2 - Balcony



Dimensions: 20'6" x 7'3"  
Area: 140 sq. ft  
Counted as living area: No

Heated: No  
Finished: No  
Enclosed: No  
Contiguous: Yes  
Permitted: Yes  
Wet space: No  
Addition: No  
Conversion: No

344 Mallow Lake Drive, Davis, Tucker County, West Virginia,  
United States, 26260

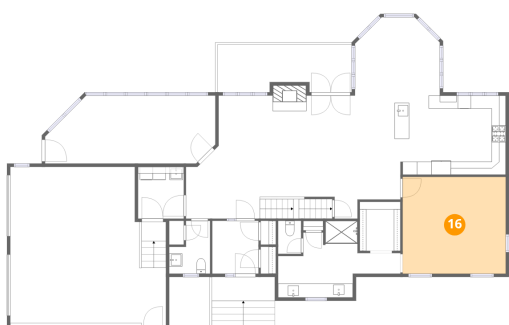
**15** Floor 2 - Foyer



Dimensions: 7'1" x 8'1"  
Area: 57 sq. ft  
Counted as living area: Yes

Heated: Yes  
Finished: Yes  
Enclosed: Yes  
Contiguous: Yes  
Permitted: Yes  
Wet space: No  
Addition: No  
Conversion: No

**16** Floor 2 - Primary Bedroom



Dimensions: 15'9" x 14'9"  
Area: 232 sq. ft  
Counted as living area: Yes

Heated: Yes  
Finished: Yes  
Enclosed: Yes  
Contiguous: Yes  
Permitted: Yes  
Wet space: No  
Addition: No  
Conversion: No

**17** Floor 2 - Bath



Dimensions: 3'6" x 5'0"  
Area: 18 sq. ft  
Counted as living area: Yes

Heated: Yes  
Finished: Yes  
Enclosed: Yes  
Contiguous: Yes  
Permitted: Yes  
Wet space: Yes  
Addition: No  
Conversion: No

344 Mallow Lake Drive, Davis, Tucker County, West Virginia,  
United States, 26260

**18** Floor 2 - W.I.C.



Dimensions: 6'3" x 7'6"  
Area: 47 sq. ft  
Counted as living area: Yes

Heated: Yes  
Finished: Yes  
Enclosed: Yes  
Contiguous: Yes  
Permitted: Yes  
Wet space: No  
Addition: No  
Conversion: No

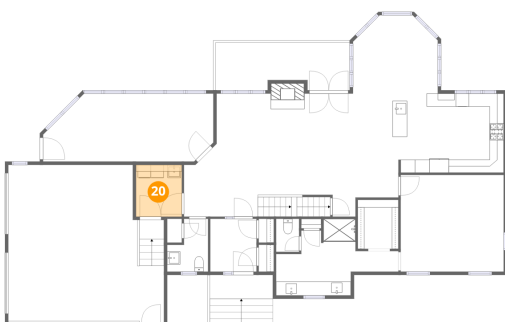
**19** Floor 2 - Kitchen



Dimensions: 17'0" x 12'1"  
Area: 203 sq. ft  
Counted as living area: Yes

Heated: Yes  
Finished: Yes  
Enclosed: Yes  
Contiguous: Yes  
Permitted: Yes  
Wet space: No  
Addition: No  
Conversion: No

**20** Floor 2 - Laundry



Dimensions: 7'0" x 7'11"  
Area: 55 sq. ft  
Counted as living area: Yes

Heated: Yes  
Finished: Yes  
Enclosed: Yes  
Contiguous: Yes  
Permitted: Yes  
Wet space: No  
Addition: No  
Conversion: No

**21** Floor 2 - Screened Porch

---

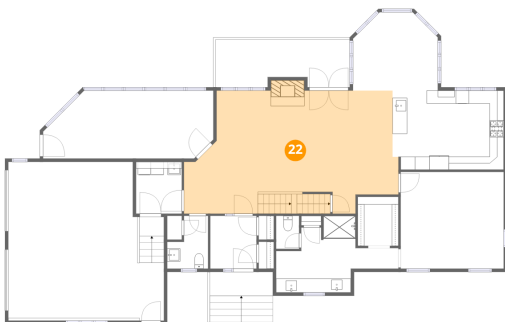


Dimensions: 26'0" x 10'5"  
Area: 246 sq. ft  
Counted as living area: No

Heated: No  
Finished: No  
Enclosed: No  
Contiguous: Yes  
Permitted: Yes  
Wet space: No  
Addition: No  
Conversion: No

**22** Floor 2 - Living Room

---



Dimensions: 32'9" x 18'9"  
Area: 543 sq. ft  
Counted as living area: Yes

Heated: Yes  
Finished: Yes  
Enclosed: Yes  
Contiguous: Yes  
Permitted: Yes  
Wet space: No  
Addition: No  
Conversion: No

**23** Floor 2 - Garage

---



Dimensions: 23'9" x 24'3"  
Area: 536 sq. ft  
Counted as living area: No

Heated: No  
Finished: Yes  
Enclosed: Yes  
Contiguous: Yes  
Permitted: Yes  
Wet space: No  
Addition: No  
Conversion: No

344 Mallow Lake Drive, Davis, Tucker County, West Virginia,  
United States, 26260

**24** Floor 2 - Bath



Dimensions: 6'2" x 8'1"  
Area: 40 sq. ft  
Counted as living area: Yes

Heated: Yes  
Finished: Yes  
Enclosed: Yes  
Contiguous: Yes  
Permitted: Yes  
Wet space: Yes  
Addition: No  
Conversion: No

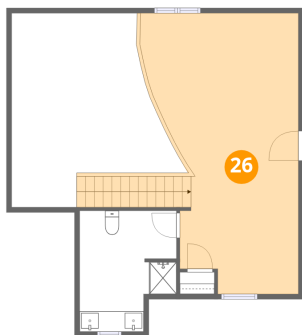
**25** Floor 2 - Dining Area



Dimensions: 13'0" x 11'11"  
Area: 139 sq. ft  
Counted as living area: Yes

Heated: Yes  
Finished: Yes  
Enclosed: Yes  
Contiguous: Yes  
Permitted: Yes  
Wet space: No  
Addition: No  
Conversion: No

**26** Floor 3 - Recreation Room



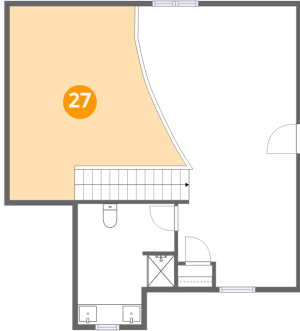
Dimensions: 15'4" x 27'2"  
Area: 376 sq. ft  
Counted as living area: Yes

Heated: Yes  
Finished: Yes  
Enclosed: Yes  
Contiguous: Yes  
Permitted: Yes  
Wet space: No  
Addition: No  
Conversion: No

344 Mallow Lake Drive, Davis, Tucker County, West Virginia,  
United States, 26260

**27** Floor 3 - Open To Below

---

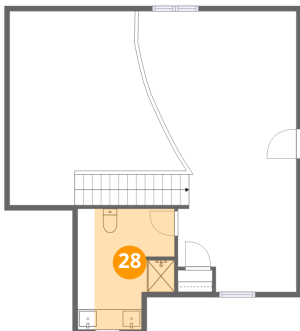


Dimensions: 17'0" x 18'9"  
Area: 233 sq. ft  
Counted as living area: No

Heated: No  
Finished: No  
Enclosed: No  
Contiguous: Yes  
Permitted: No  
Wet space: No  
Addition: No  
Conversion: No

**28** Floor 3 - Bath

---



Dimensions: 7'9" x 11'8"  
Area: 78 sq. ft  
Counted as living area: Yes

Heated: Yes  
Finished: Yes  
Enclosed: Yes  
Contiguous: Yes  
Permitted: Yes  
Wet space: Yes  
Addition: No  
Conversion: No