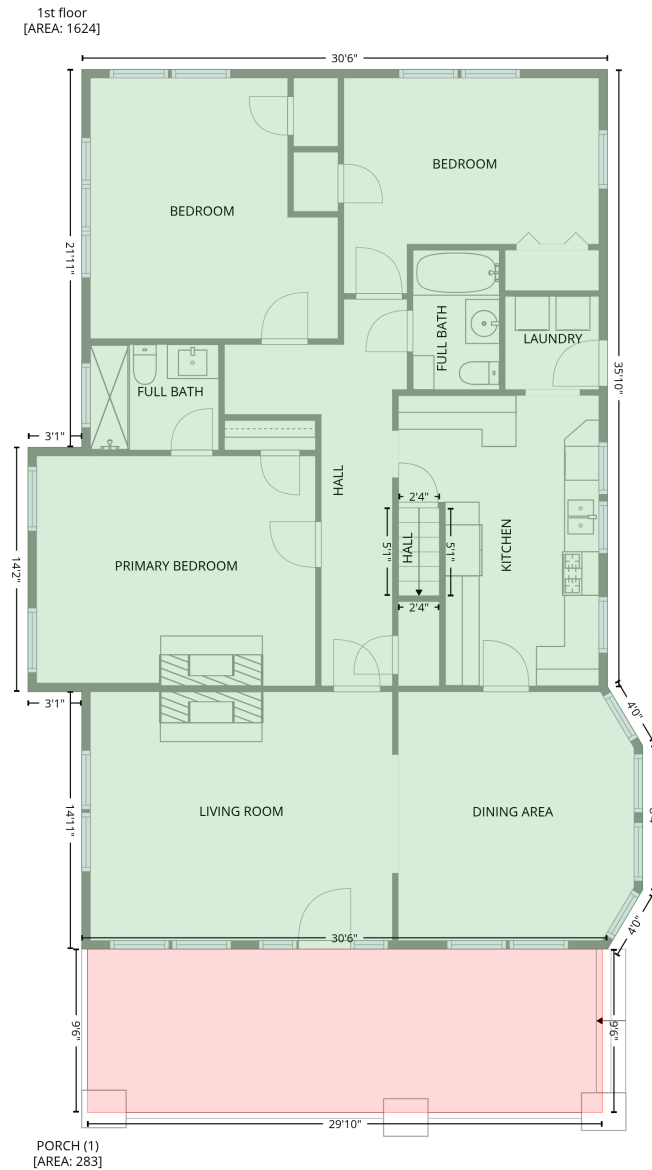


# 19 Club Drive, Greenville, Greenville County, South Carolina, United States, 29605

Gross Living Area: 1624 sq. ft

## Level 1

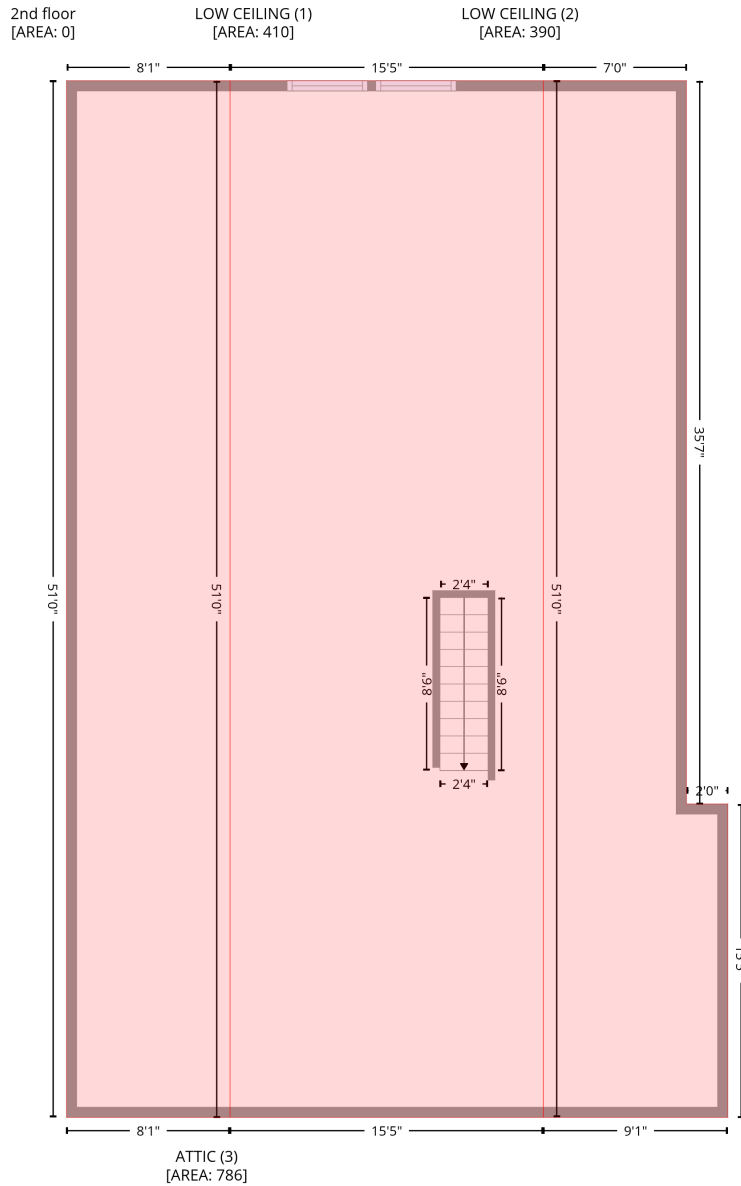


Space	Area (sq. ft)	Calculation
1st floor (Living area)	1624	Coordinate Polygon Area Algorithm using inches $-((189.2 + 151.8) * (314.6 - 314.6) + (151.8 + 151.8) * (314.6 - 144.4) + (151.8 + 189.2) * (144.4 - 144.4) + (189.2 + 189.2) * (144.4 - -118.6) + (189.2 + 555) * (-118.6 - -118.6) + (555 + 555) * (-118.6 - 311.1) + (555 + 579.5) * (311.1 - 352.1) + (579.5 + 579.5) * (352.1 - 452.4) + (579.5 + 554.9) * (452.4 - 493.7) + (554.9 + 189.2) * (493.7 - 493.7) + (189.2 + 189.2) * (493.7 - 314.6)) * 0.5 * 0.00694$
PORCH (Non-living area)	283	$-((551.6 + 551.6) * (493.7 - 607.5) + (551.6 + 193.2) * (607.5 - 607.5) + (193.2 + 193.2) * (607.5 - 493.7) + (193.2 + 551.6) * (493.7 - 493.7)) * 0.5 * 0.00694$

# 19 Club Drive, Greenville, Greenville County, South Carolina, United States, 29605

Gross Living Area: 1624 sq. ft

## Level 2



Space	Area (sq. ft)	Calculation <small>Coordinate Polygon Area Algorithm using inches</small>
LOW CEILING (Non-living area)	410	$-\left((285.7 + 285.7) * (-118.6 - 493.7) + (285.7 + 189.2) * (493.7 - 493.7) + (189.2 + 189.2) * (493.7 - -118.6) + (189.2 + 285.7) * (-118.6 - -118.6)\right) * 0.5 * 0.00694$
LOW CEILING (Non-living area)	390	$-\left((555 + 555) * (-118.6 - 308.6) + (555 + 579.5) * (308.6 - 308.6) + (579.5 + 579.5) * (308.6 - 493.7) + (579.5 + 470.6) * (493.7 - 493.7) + (470.6 + 470.6) * (493.7 - -118.6) + (470.6 + 555) * (-118.6 - -118.6)\right) * 0.5 * 0.00694$
ATTIC (Non-living area)	786	$-\left((470.6 + 470.6) * (-118.6 - 493.7) + (470.6 + 285.7) * (493.7 - 493.7) + (285.7 + 285.7) * (493.7 - -118.6) + (285.7 + 470.6) * (-118.6 - -118.6)\right) * 0.5 * 0.00694$