

Home data report

# 1404 Amsterdam Court, Granbury, Hood County, Texas, United States, 76048



**Total Area: 2118 sq. ft**

1st Floor: 2118 sq. ft

Excluded: Garage 600 sq. ft, Covered patio 259 sq. ft, Patio 891 sq. ft, Porch 28 sq. ft,

Walls: 162 sq. ft

## Property summary



**1** Floors



**2** Bedrooms



**3** Bathrooms



**1** Garages

# 1404 Amsterdam Court, Granbury, Hood County, Texas, United States, 76048



## Room dimensions

Floor 1

Total:2118sqft

Excluded: 1778sqft

#		Dimensions	sqft	Counted as living area
1	Living Room	20'8" x 23'8"	490 sq. ft	Yes
2	Porch	7'1" x 3'11"	28 sq. ft	No
3	Foyer	14'2" x 11'4"	161 sq. ft	Yes
4	Bath	6'1" x 3'4"	21 sq. ft	Yes
5	Kitchen	11'6" x 16'3"	187 sq. ft	Yes
6	Laundry	7'7" x 13'1"	99 sq. ft	Yes
7	Primary Bedroom	17'11" x 15'1"	270 sq. ft	Yes
8	Hall	8'10" x 3'6"	31 sq. ft	Yes
9	Primary Bath	11'10" x 13'3"	157 sq. ft	Yes
10	W.I.C.	9'10" x 13'4"	131 sq. ft	Yes
11	Swimming Pool	18'6" x 28'0"	516 sq. ft	No

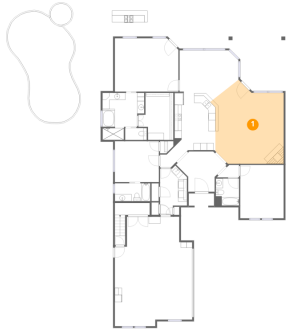
Home data report

**1404 Amsterdam Court, Granbury, Hood County, Texas, United States, 76048**

#		Dimensions	sqft	Counted as living area
12	Bath	10'0" x 5'1"	51 sq. ft	Yes
13	Dining Area	16'7" x 14'7"	242 sq. ft	Yes
14	Patio	52'2" x 49'6"	2581 sq. ft	No
15	Bath	6'7" x 7'8"	50 sq. ft	Yes
16	Garage	21'10" x 30'11"	675 sq. ft	No
17	Hall	6'1" x 3'6"	21 sq. ft	Yes
18	Bedroom	12'5" x 11'6"	143 sq. ft	Yes
19	Office	12'3" x 15'1"	185 sq. ft	Yes
20	Covered Patio	31'1" x 15'4"	478 sq. ft	No

## 1 Floor 1 - Living Room

---



Dimensions: 20'8" x 23'8"  
Area: 490 sq. ft  
Counted as living area: Yes

Heated: Yes  
Finished: Yes  
Enclosed: Yes  
Contiguous: Yes  
Permitted: Yes  
Wet space: No  
Addition: No  
Conversion: No

## 2 Floor 1 - Porch

---



Dimensions: 7'1" x 3'11"  
Area: 28 sq. ft  
Counted as living area: No

Heated: No  
Finished: No  
Enclosed: No  
Contiguous: Yes  
Permitted: Yes  
Wet space: No  
Addition: No  
Conversion: No

# 1404 Amsterdam Court, Granbury, Hood County, Texas, United States, 76048

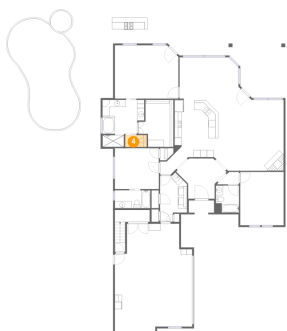
## 3 Floor 1 - Foyer



Dimensions: 14'2" x 11'4"  
Area: 161 sq. ft  
Counted as living area: Yes

Heated: Yes  
Finished: Yes  
Enclosed: Yes  
Contiguous: Yes  
Permitted: Yes  
Wet space: No  
Addition: No  
Conversion: No

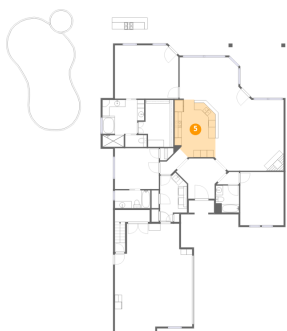
## 4 Floor 1 - Bath



Dimensions: 6'1" x 3'4"  
Area: 21 sq. ft  
Counted as living area: Yes

Heated: Yes  
Finished: Yes  
Enclosed: Yes  
Contiguous: Yes  
Permitted: Yes  
Wet space: Yes  
Addition: No  
Conversion: No

## 5 Floor 1 - Kitchen



Dimensions: 11'6" x 16'3"  
Area: 187 sq. ft  
Counted as living area: Yes

Heated: Yes  
Finished: Yes  
Enclosed: Yes  
Contiguous: Yes  
Permitted: Yes  
Wet space: No  
Addition: No  
Conversion: No

## 6 Floor 1 - Laundry



Dimensions: 7'7" x 13'1"  
Area: 99 sq. ft  
Counted as living area: Yes

Heated: Yes  
Finished: Yes  
Enclosed: Yes  
Contiguous: Yes  
Permitted: Yes  
Wet space: No  
Addition: No  
Conversion: No

## 7 Floor 1 - Primary Bedroom



Dimensions: 17'11" x 15'1"  
Area: 270 sq. ft  
Counted as living area: Yes

Heated: Yes  
Finished: Yes  
Enclosed: Yes  
Contiguous: Yes  
Permitted: Yes  
Wet space: No  
Addition: No  
Conversion: No

## 8 Floor 1 - Hall

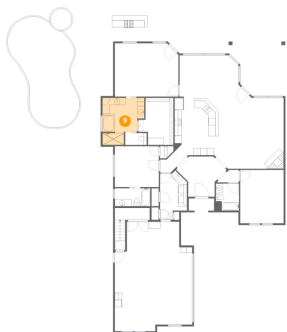


Dimensions: 8'10" x 3'6"  
Area: 31 sq. ft  
Counted as living area: Yes

Heated: Yes  
Finished: Yes  
Enclosed: Yes  
Contiguous: Yes  
Permitted: Yes  
Wet space: No  
Addition: No  
Conversion: No

# 1404 Amsterdam Court, Granbury, Hood County, Texas, United States, 76048

## 9 Floor 1 - Primary Bath



Dimensions: 11'10" x 13'3"  
Area: 157 sq. ft  
Counted as living area: Yes

Heated: Yes  
Finished: Yes  
Enclosed: Yes  
Contiguous: Yes  
Permitted: Yes  
Wet space: Yes  
Addition: No  
Conversion: No

## 10 Floor 1 - W.I.C.



Dimensions: 9'10" x 13'4"  
Area: 131 sq. ft  
Counted as living area: Yes

Heated: Yes  
Finished: Yes  
Enclosed: Yes  
Contiguous: Yes  
Permitted: Yes  
Wet space: No  
Addition: No  
Conversion: No

## 11 Floor 1 - Swimming Pool



Dimensions: 18'6" x 28'0"  
Area: 516 sq. ft  
Counted as living area: No

Heated: No  
Finished: No  
Enclosed: No  
Contiguous: Yes  
Permitted: No  
Wet space: No  
Addition: No  
Conversion: No

## 12 Floor 1 - Bath



Dimensions: 10'0" x 5'1"  
Area: 51 sq. ft  
Counted as living area: Yes

Heated: Yes  
Finished: Yes  
Enclosed: Yes  
Contiguous: Yes  
Permitted: Yes  
Wet space: Yes  
Addition: No  
Conversion: No

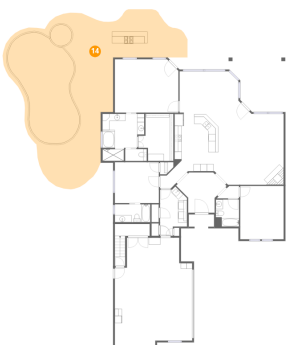
## 13 Floor 1 - Dining Area



Dimensions: 16'7" x 14'7"  
Area: 242 sq. ft  
Counted as living area: Yes

Heated: Yes  
Finished: Yes  
Enclosed: Yes  
Contiguous: Yes  
Permitted: Yes  
Wet space: No  
Addition: No  
Conversion: No

## 14 Floor 1 - Patio



Dimensions: 52'2" x 49'6"  
Area: 2581 sq. ft  
Counted as living area: No

Heated: No  
Finished: No  
Enclosed: No  
Contiguous: Yes  
Permitted: Yes  
Wet space: No  
Addition: No  
Conversion: No

**15** Floor 1 - Bath



Dimensions: 6'7" x 7'8"  
Area: 50 sq. ft  
Counted as living area: Yes

Heated: Yes  
Finished: Yes  
Enclosed: Yes  
Contiguous: Yes  
Permitted: Yes  
Wet space: Yes  
Addition: No  
Conversion: No

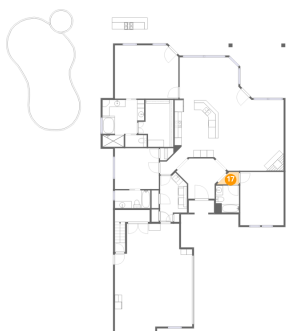
**16** Floor 1 - Garage



Dimensions: 21'10" x 30'11"  
Area: 675 sq. ft  
Counted as living area: No

Heated: No  
Finished: No  
Enclosed: Yes  
Contiguous: Yes  
Permitted: Yes  
Wet space: No  
Addition: No  
Conversion: No

**17** Floor 1 - Hall



Dimensions: 6'1" x 3'6"  
Area: 21 sq. ft  
Counted as living area: Yes

Heated: Yes  
Finished: Yes  
Enclosed: Yes  
Contiguous: Yes  
Permitted: Yes  
Wet space: No  
Addition: No  
Conversion: No

1404 Amsterdam Court, Granbury, Hood County, Texas, United States, 76048

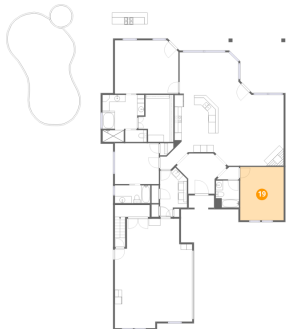
**18** Floor 1 - Bedroom



Dimensions: 12'5" x 11'6"  
Area: 143 sq. ft  
Counted as living area: Yes

Heated: Yes  
Finished: Yes  
Enclosed: Yes  
Contiguous: Yes  
Permitted: Yes  
Wet space: No  
Addition: No  
Conversion: No

**19** Floor 1 - Office



Dimensions: 12'3" x 15'1"  
Area: 185 sq. ft  
Counted as living area: Yes

Heated: Yes  
Finished: Yes  
Enclosed: Yes  
Contiguous: Yes  
Permitted: Yes  
Wet space: No  
Addition: No  
Conversion: No

**20** Floor 1 - Covered Patio



Dimensions: 31'1" x 15'4"  
Area: 478 sq. ft  
Counted as living area: No

Heated: No  
Finished: No  
Enclosed: No  
Contiguous: Yes  
Permitted: Yes  
Wet space: No  
Addition: No  
Conversion: No