

1st floor

Total Area: 1224 sq. ft

1st Floor: 1224 sq. ft

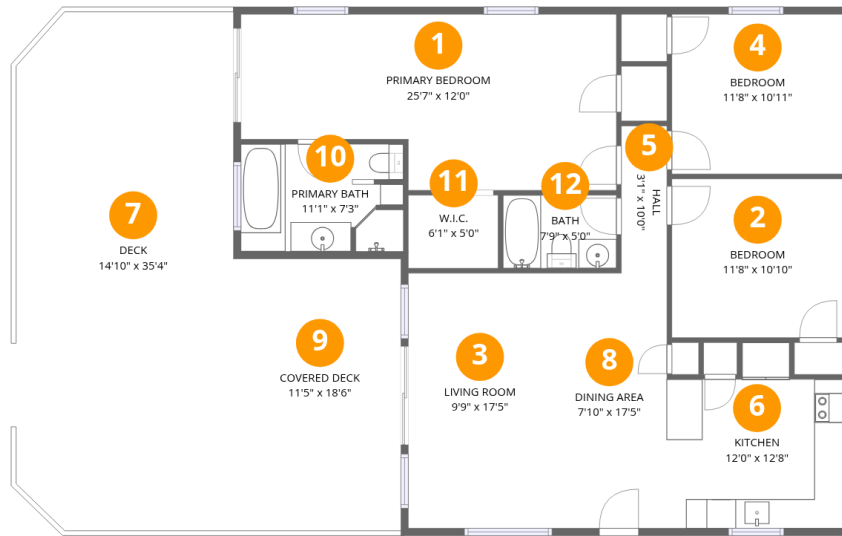
Excluded: Deck 513 sq. ft, Covered deck 212 sq. ft, Walls: 77 sq. ft

Property summary

 **1** Floors

 **3** Bedrooms

 **2** Bathrooms



Room dimensions

Floor 1

Total: 1224sqft

Excluded: 725sqft

#		Dimensions	sqft	Counted as living area
1	Primary Bedroom	25'7" x 12'0"	307 sq. ft	Yes
2	Bedroom	11'8" x 10'10"	127 sq. ft	Yes
3	Living Room	9'9" x 17'5"	170 sq. ft	Yes
4	Bedroom	11'8" x 10'11"	127 sq. ft	Yes
5	Hall	3'1" x 10'0"	31 sq. ft	Yes
6	Kitchen	12'0" x 12'8"	152 sq. ft	Yes
7	Deck	14'10" x 35'4"	524 sq. ft	No
8	Dining Area	7'10" x 17'5"	137 sq. ft	Yes
9	Covered Deck	11'5" x 18'6"	212 sq. ft	No
10	Primary Bath	11'1" x 7'3"	81 sq. ft	Yes
11	W.I.C.	6'1" x 5'0"	30 sq. ft	Yes

Home data report

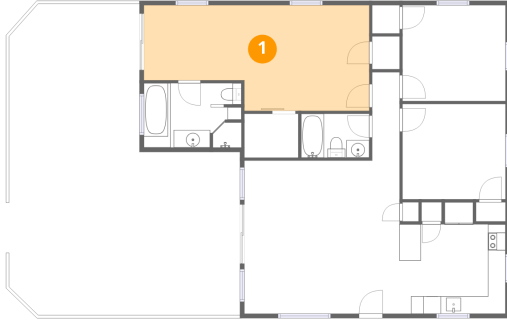
183 Seaside Dr, Gun Barrel City, TX, US



#		Dimensions	sqft	Counted as living area
12	Bath	7'9" x 5'0"	39 sq. ft	Yes



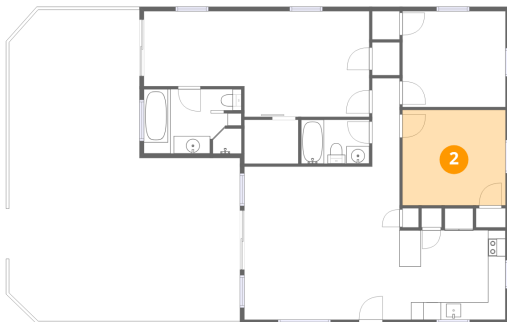
1 Floor 1 - Primary Bedroom



Dimensions: 25'7" x 12'0"
Area: 307 sq. ft
Counted as living area: Yes

Heated: Yes
Finished: Yes
Enclosed: Yes
Contiguous: Yes
Permitted: Yes
Wet space: No
Addition: No
Conversion: No

2 Floor 1 - Bedroom

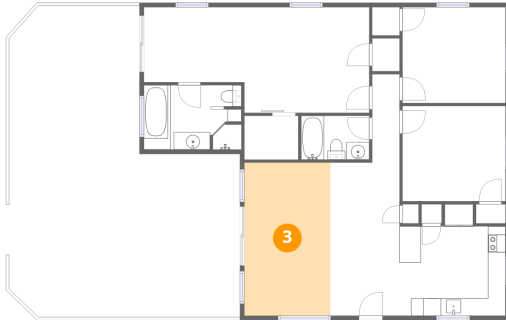


Dimensions: 11'8" x 10'10"
Area: 127 sq. ft
Counted as living area: Yes

Heated: Yes
Finished: Yes
Enclosed: Yes
Contiguous: Yes
Permitted: Yes
Wet space: No
Addition: No
Conversion: No



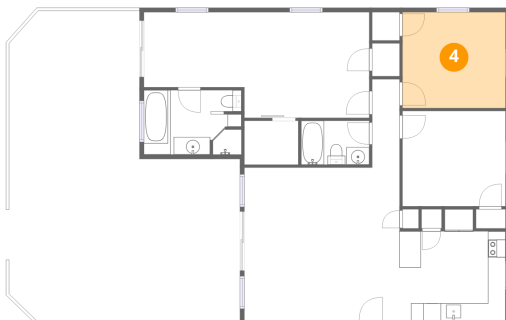
3 Floor 1 - Living Room



Dimensions: 9'9" x 17'5"
Area: 170 sq. ft
Counted as living area: Yes

Heated: Yes
Finished: Yes
Enclosed: Yes
Contiguous: Yes
Permitted: Yes
Wet space: No
Addition: No
Conversion: No

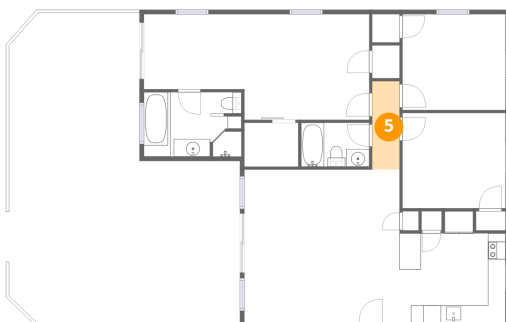
4 Floor 1 - Bedroom



Dimensions: 11'8" x 10'11"
Area: 127 sq. ft
Counted as living area: Yes

Heated: Yes
Finished: Yes
Enclosed: Yes
Contiguous: Yes
Permitted: Yes
Wet space: No
Addition: No
Conversion: No

5 Floor 1 - Hall

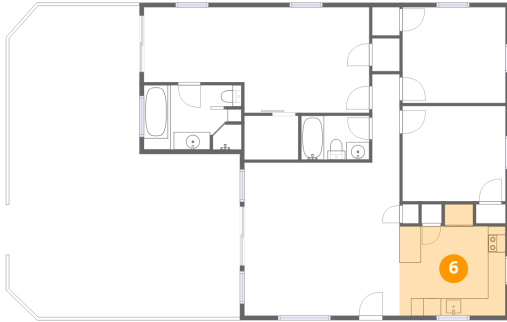


Dimensions: 3'1" x 10'0"
Area: 31 sq. ft
Counted as living area: Yes

Heated: Yes
Finished: Yes
Enclosed: Yes
Contiguous: Yes
Permitted: Yes
Wet space: No
Addition: No
Conversion: No



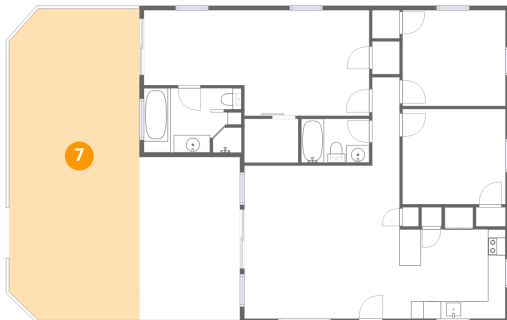
6 Floor 1 - Kitchen



Dimensions: 12'0" x 12'8"
Area: 152 sq. ft
Counted as living area: Yes

Heated: Yes
Finished: Yes
Enclosed: Yes
Contiguous: Yes
Permitted: Yes
Wet space: No
Addition: No
Conversion: No

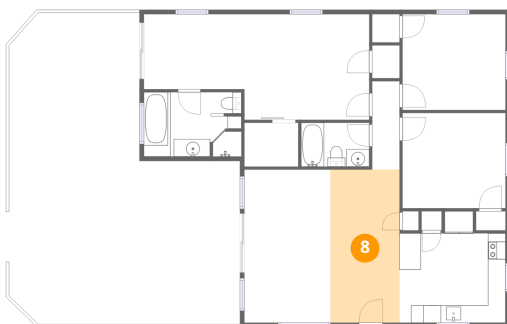
7 Floor 1 - Deck



Dimensions: 14'10" x 35'4"
Area: 524 sq. ft
Counted as living area: No

Heated: No
Finished: No
Enclosed: No
Contiguous: Yes
Permitted: Yes
Wet space: No
Addition: No
Conversion: No

8 Floor 1 - Dining Area

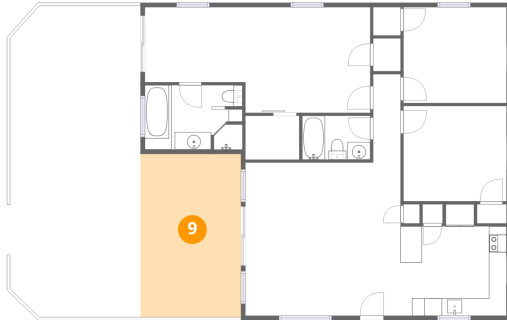


Dimensions: 7'10" x 17'5"
Area: 137 sq. ft
Counted as living area: Yes

Heated: Yes
Finished: Yes
Enclosed: Yes
Contiguous: Yes
Permitted: Yes
Wet space: No
Addition: No
Conversion: No



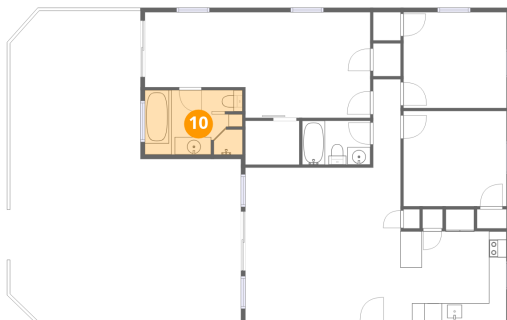
9 Floor 1 - Covered Deck



Dimensions: 11'5" x 18'6"
Area: 212 sq. ft
Counted as living area: No

Heated: No
Finished: No
Enclosed: No
Contiguous: Yes
Permitted: Yes
Wet space: No
Addition: No
Conversion: No

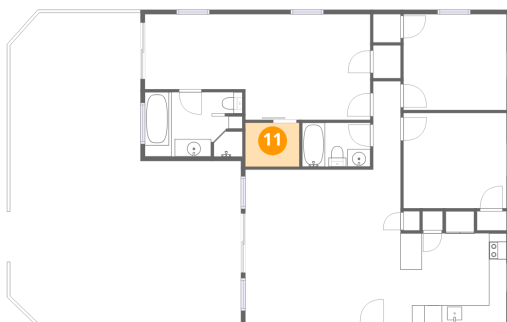
10 Floor 1 - Primary Bath



Dimensions: 11'1" x 7'3"
Area: 81 sq. ft
Counted as living area: Yes

Heated: Yes
Finished: Yes
Enclosed: Yes
Contiguous: Yes
Permitted: Yes
Wet space: Yes
Addition: No
Conversion: No

11 Floor 1 - W.I.C.

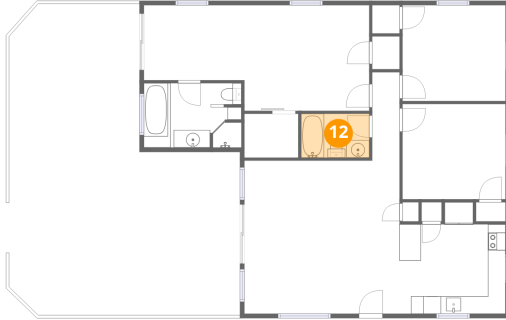


Dimensions: 6'1" x 5'0"
Area: 30 sq. ft
Counted as living area: Yes

Heated: Yes
Finished: Yes
Enclosed: Yes
Contiguous: Yes
Permitted: Yes
Wet space: No
Addition: No
Conversion: No



12 Floor 1 - Bath



Dimensions: 7'9" x 5'0"
Area: 39 sq. ft
Counted as living area: Yes

Heated: Yes
Finished: Yes
Enclosed: Yes
Contiguous: Yes
Permitted: Yes
Wet space: Yes
Addition: No
Conversion: No