

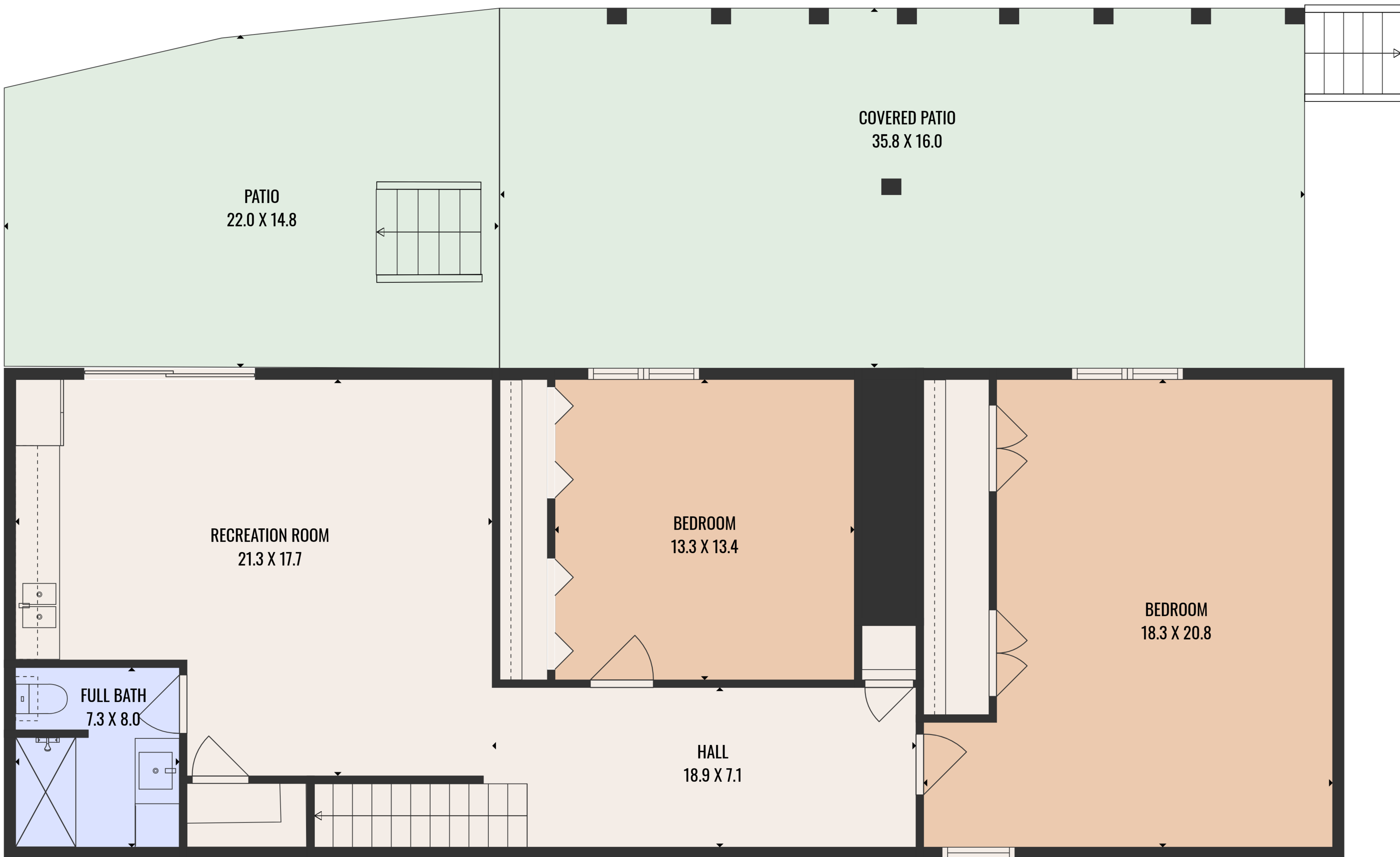


BOAT DOCK

16.3 X 10.2

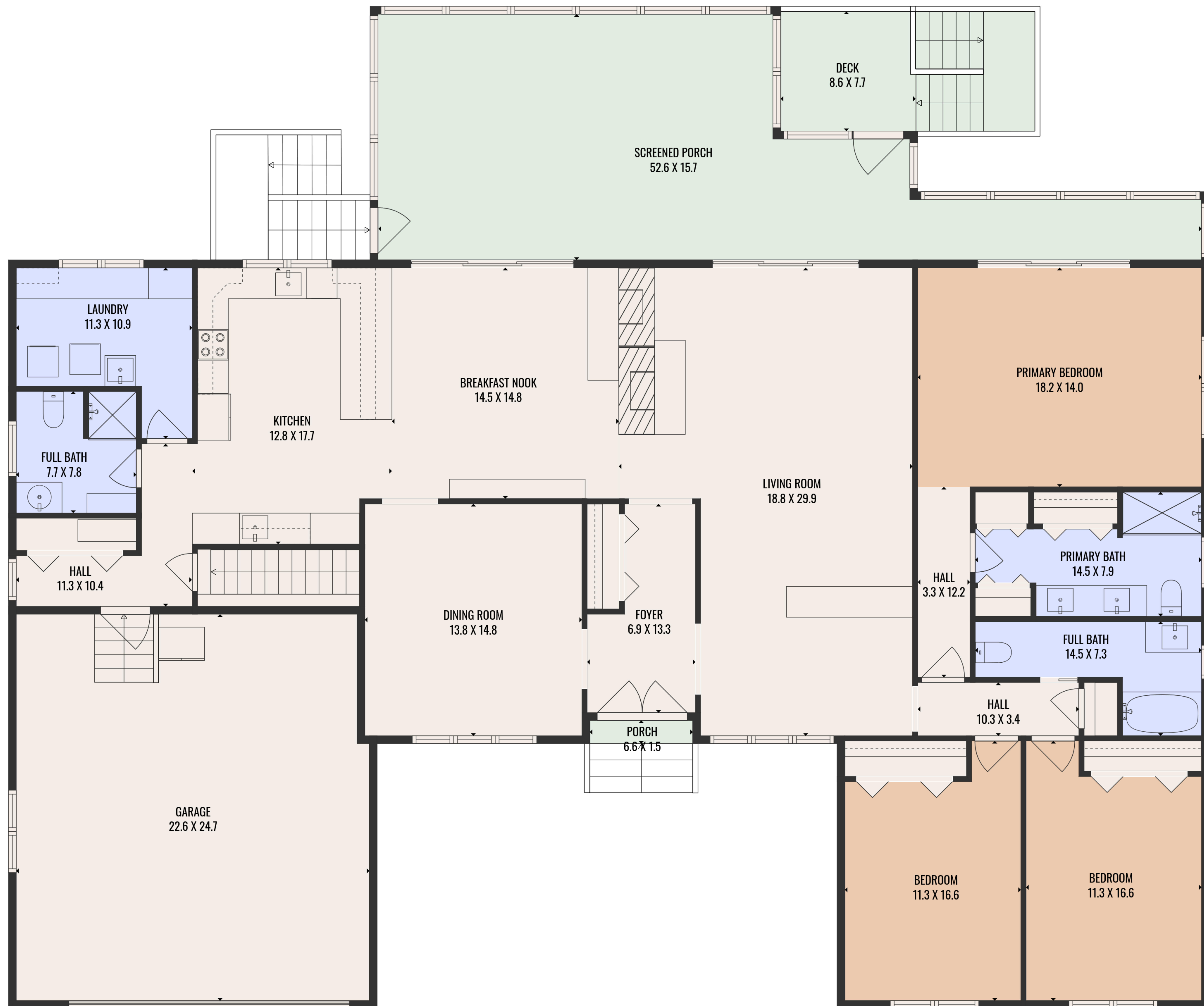
Total GLA: 3886 sq. ft | Total: 6243 sq. ft
Boat dock: (Excluded areas 167 sq. ft)
Basement - below grade: 1305 sq. ft (Excluded areas 897 sq. ft)
Main floor: 2581 sq. ft (Excluded areas 1293 sq. ft)

COMPLIES WITH ANSI STANDARDS. APPROXIMATE DIMENSIONS. DRAWING NOT TO SCALE.



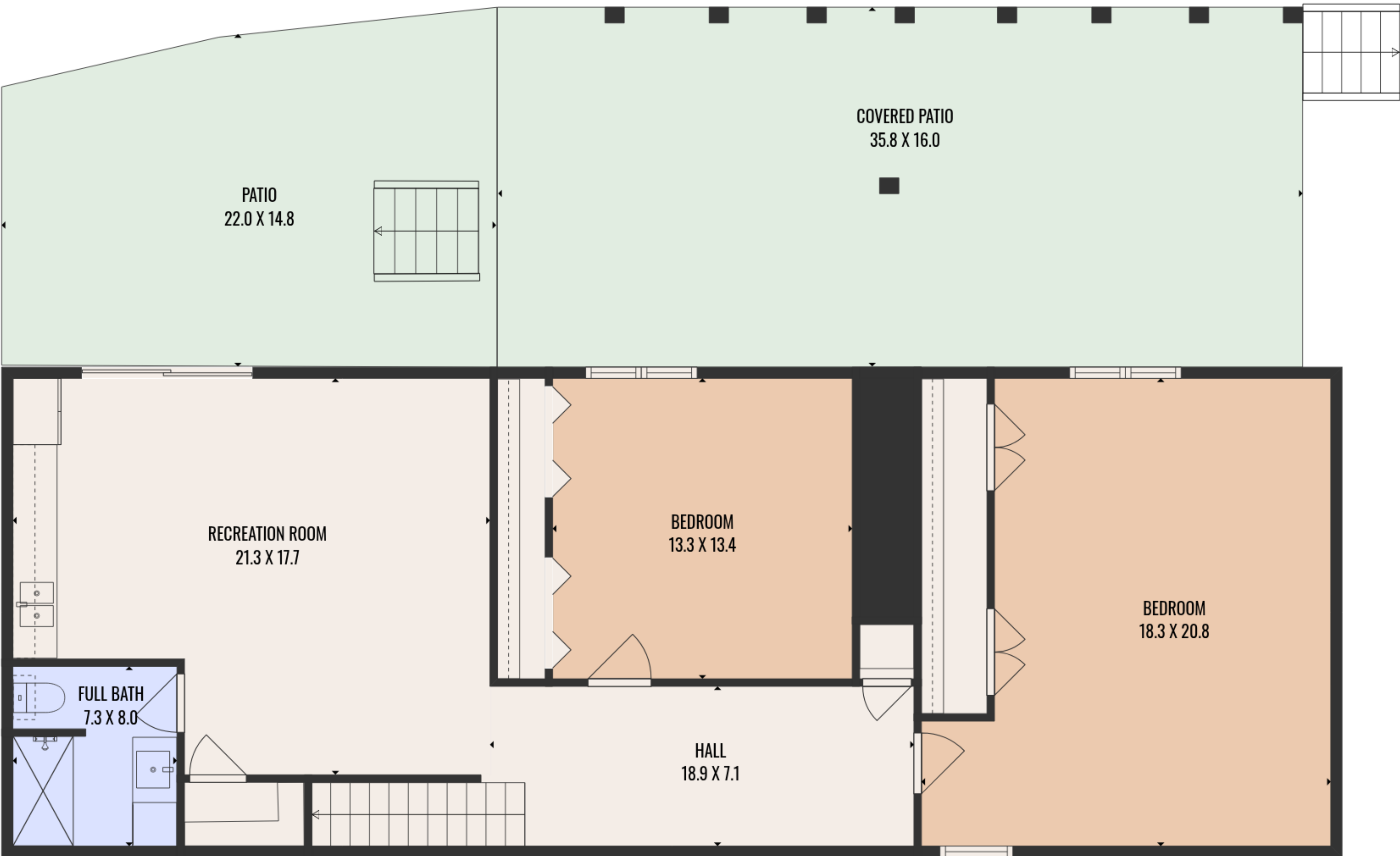
Total GLA: 3886 sq. ft | Total: 6243 sq. ft
Boat dock: (Excluded areas 167 sq. ft)
Basement - below grade: 1305 sq. ft (Excluded areas 897 sq. ft)
Main floor: 2581 sq. ft (Excluded areas 1293 sq. ft)

COMPLIES WITH ANSI STANDARDS. APPROXIMATE DIMENSIONS. DRAWING NOT TO SCALE.

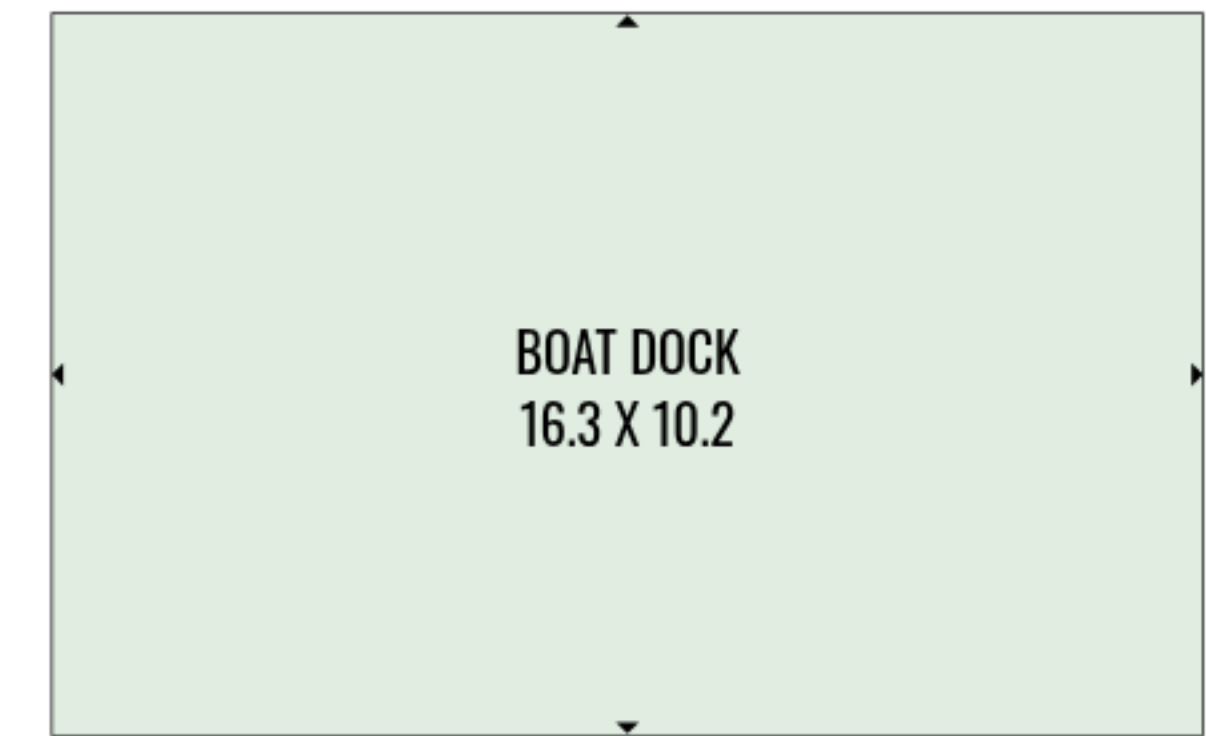


Total GLA: 3886 sq. ft | Total: 6243 sq. ft
Boat dock: (Excluded areas 167 sq. ft)
Basement - below grade: 1305 sq. ft (Excluded areas 897 sq. ft)
Main floor: 2581 sq. ft (Excluded areas 1293 sq. ft)

COMPLIES WITH ANSI STANDARDS. APPROXIMATE DIMENSIONS. DRAWING NOT TO SCALE.



BASEMENT - BELOW GRADE



BOAT DOCK



MAIN FLOOR

Total GLA: 3886 sq. ft | Total: 6243 sq. ft
 Boat dock: (Excluded areas 167 sq. ft)
 Basement - below grade: 1305 sq. ft (Excluded areas 897 sq. ft)
 Main floor: 2581 sq. ft (Excluded areas 1293 sq. ft)

COMPLIES WITH ANSI STANDARDS. APPROXIMATE DIMENSIONS. DRAWING NOT TO SCALE.