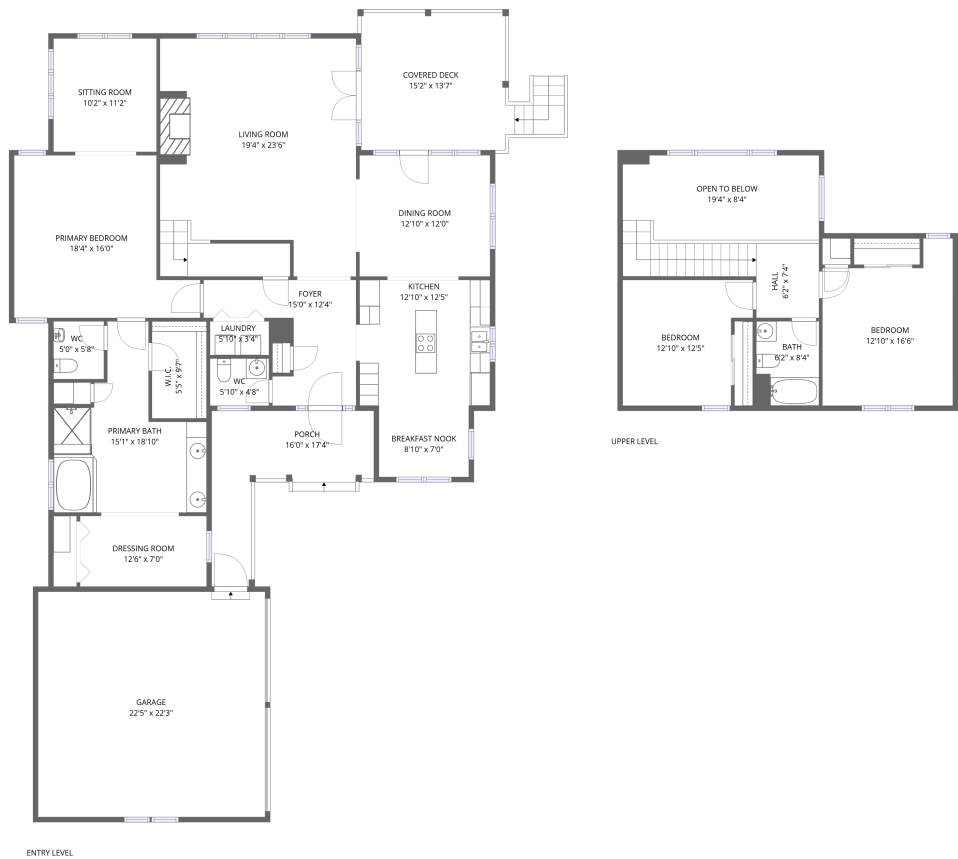


Home report

205 Golfer's Crossing Drive, Penhook, Franklin County, Virginia,  
United States, 24137



**Total Area: 2340 sq. ft**  
Floor 1: 1800 sq. ft, Floor 2: 540 sq. ft  
Excluded: Garage 497 sq. ft, Porch 156 sq. ft, Covered deck 218 sq. ft, Open to below 156 sq. ft, Walls: 204 sq. ft

Property summary

 **2** Floors

 **3** Bedrooms

 **2** Bathrooms

Home report

205 Golfer's Crossing Drive, Penhook, Franklin County, Virginia,  
United States, 24137

 **1**  
Half baths

 **1**  
Garages

Home report

205 Golfer's Crossing Drive, Penhook, Franklin County, Virginia,  
United States, 24137



Room dimensions

Floor 1 Total:1800sqft Excluded: 871sqft

#		Max Dimensions	sqft	Included
1	Living Room	19'4" x 23'6"	450 sq. ft	Yes
2	Breakfast Nook	8'10" x 7'0"	62 sq. ft	Yes
3	Kitchen	12'10" x 12'5"	160 sq. ft	Yes
4	Porch	16'0" x 17'4"	156 sq. ft	No
5	Primary Bath	15'1" x 18'10"	186 sq. ft	Yes
6	Laundry	5'10" x 3'4"	19 sq. ft	Yes
7	Foyer	15'0" x 12'4"	116 sq. ft	Yes
8	WC	5'0" x 5'8"	28 sq. ft	Yes
9	Primary Bedroom	18'4" x 16'0"	241 sq. ft	Yes
10	Covered Deck	15'2" x 13'7"	218 sq. ft	No
11	Sitting Room	10'2" x 11'2"	114 sq. ft	Yes

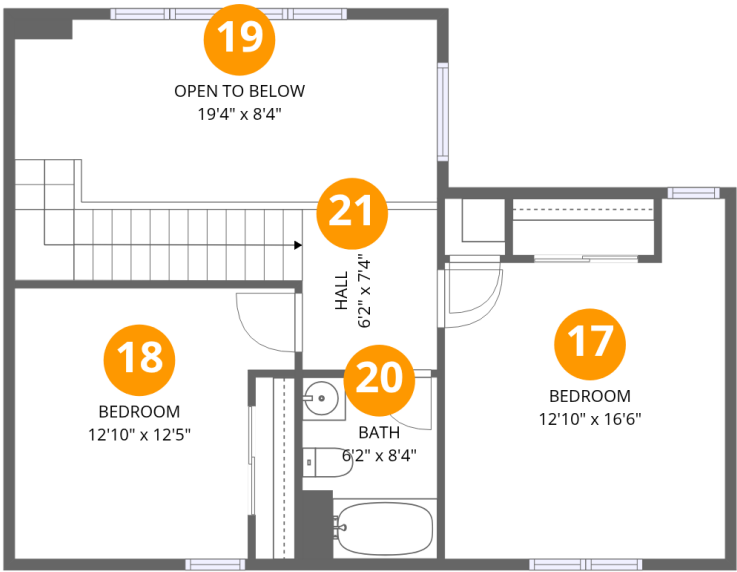
## Home report

**205 Golfer's Crossing Drive, Penhook, Franklin County, Virginia,  
United States, 24137**

#		Max Dimensions	sqft	Included
12	W.I.C.	5'5" x 9'7"	52 sq. ft	Yes
13	Dining Room	12'10" x 12'0"	154 sq. ft	Yes
14	Garage	22'5" x 22'3"	497 sq. ft	No
15	Dressing Room	12'6" x 7'0"	87 sq. ft	Yes
16	WC	5'10" x 4'8"	27 sq. ft	Yes

Home report

205 Golfer's Crossing Drive, Penhook, Franklin County, Virginia,  
United States, 24137



Room dimensions

Floor 2 Total:540sqft    Excluded: 156sqft

#		Max Dimensions	sqft	Included
17	Bedroom	12'10" x 16'6"	183 sq. ft	Yes
18	Bedroom	12'10" x 12'5"	141 sq. ft	Yes
19	Open To Below	19'4" x 8'4"	156 sq. ft	No
20	Bath	6'2" x 8'4"	51 sq. ft	Yes
21	Hall	6'2" x 7'4"	101 sq. ft	Yes

1 Floor 1 - Living Room



Max Dimensions: 19'4" x 23'6"  
Calculated Area: 450 sq. ft  
Included: Yes

Heated: Yes  
Finished: Yes  
Enclosed: Yes  
Contiguous: Yes  
Permitted: Yes  
Wet space: No  
Addition: No  
Conversion: No

2 Floor 1 - Breakfast Nook



Max Dimensions: 8'10" x 7'0"  
Calculated Area: 62 sq. ft  
Included: Yes

Heated: Yes  
Finished: Yes  
Enclosed: Yes  
Contiguous: Yes  
Permitted: Yes  
Wet space: No  
Addition: No  
Conversion: No

3 Floor 1 - Kitchen



Max Dimensions: 12'10" x 12'5"  
Calculated Area: 160 sq. ft  
Included: Yes

Heated: Yes  
Finished: Yes  
Enclosed: Yes  
Contiguous: Yes  
Permitted: Yes  
Wet space: No  
Addition: No  
Conversion: No

4 Floor 1 - Porch



Max Dimensions: 16'0" x 17'4"  
Calculated Area: 156 sq. ft  
Included: No

Heated: No  
Finished: No  
Enclosed: No  
Contiguous: Yes  
Permitted: Yes  
Wet space: No  
Addition: No  
Conversion: No

5 Floor 1 - Primary Bath



Max Dimensions: 15'1" x 18'10"  
Calculated Area: 186 sq. ft  
Included: Yes

Heated: Yes  
Finished: Yes  
Enclosed: Yes  
Contiguous: Yes  
Permitted: Yes  
Wet space: Yes  
Addition: No  
Conversion: No

205 Golfer's Crossing Drive, Penhook, Franklin County, Virginia,  
United States, 24137

## 6 Floor 1 - Laundry



Max Dimensions: 5'10" x 3'4"  
Calculated Area: 19 sq. ft  
Included: Yes

Heated: Yes  
Finished: Yes  
Enclosed: Yes  
Contiguous: Yes  
Permitted: Yes  
Wet space: No  
Addition: No  
Conversion: No

## 7 Floor 1 - Foyer



Max Dimensions: 15'0" x 12'4"  
Calculated Area: 116 sq. ft  
Included: Yes

Heated: Yes  
Finished: Yes  
Enclosed: Yes  
Contiguous: Yes  
Permitted: Yes  
Wet space: No  
Addition: No  
Conversion: No

## 8 Floor 1 - WC



Max Dimensions: 5'0" x 5'8"  
Calculated Area: 28 sq. ft  
Included: Yes

Heated: Yes  
Finished: Yes  
Enclosed: Yes  
Contiguous: Yes  
Permitted: Yes  
Wet space: Yes  
Addition: No  
Conversion: No



9 Floor 1 - Primary Bedroom



Max Dimensions: 18'4" x 16'0"  
Calculated Area: 241 sq. ft  
Included: Yes

Heated: Yes  
Finished: Yes  
Enclosed: Yes  
Contiguous: Yes  
Permitted: Yes  
Wet space: No  
Addition: No  
Conversion: No

10 Floor 1 - Covered Deck



Max Dimensions: 15'2" x 13'7"  
Calculated Area: 218 sq. ft  
Included: No

Heated: No  
Finished: No  
Enclosed: No  
Contiguous: Yes  
Permitted: Yes  
Wet space: No  
Addition: No  
Conversion: No

11 Floor 1 - Sitting Room



Max Dimensions: 10'2" x 11'2"  
Calculated Area: 114 sq. ft  
Included: Yes

Heated: Yes  
Finished: Yes  
Enclosed: Yes  
Contiguous: Yes  
Permitted: Yes  
Wet space: No  
Addition: No  
Conversion: No

12 Floor 1 - W.I.C.



Max Dimensions: 5'5" x 9'7"  
Calculated Area: 52 sq. ft  
Included: Yes

Heated: Yes  
Finished: Yes  
Enclosed: Yes  
Contiguous: Yes  
Permitted: Yes  
Wet space: No  
Addition: No  
Conversion: No

13 Floor 1 - Dining Room



Max Dimensions: 12'10" x 12'0"  
Calculated Area: 154 sq. ft  
Included: Yes

Heated: Yes  
Finished: Yes  
Enclosed: Yes  
Contiguous: Yes  
Permitted: Yes  
Wet space: No  
Addition: No  
Conversion: No

14 Floor 1 - Garage



Max Dimensions: 22'5" x 22'3"  
Calculated Area: 497 sq. ft  
Included: No

Heated: No  
Finished: No  
Enclosed: Yes  
Contiguous: Yes  
Permitted: Yes  
Wet space: No  
Addition: No  
Conversion: No

15 Floor 1 - Dressing Room



Max Dimensions: 12'6" x 7'0"  
Calculated Area: 87 sq. ft  
Included: Yes

Heated: Yes  
Finished: Yes  
Enclosed: Yes  
Contiguous: Yes  
Permitted: Yes  
Wet space: No  
Addition: No  
Conversion: No

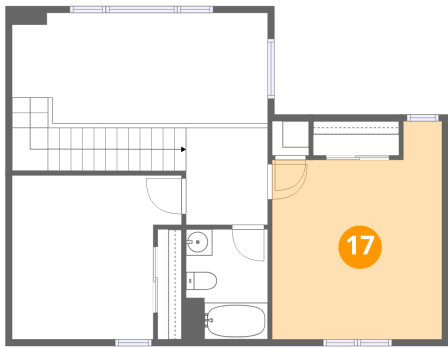
16 Floor 1 - WC



Max Dimensions: 5'10" x 4'8"  
Calculated Area: 27 sq. ft  
Included: Yes

Heated: Yes  
Finished: Yes  
Enclosed: Yes  
Contiguous: Yes  
Permitted: Yes  
Wet space: Yes  
Addition: No  
Conversion: No

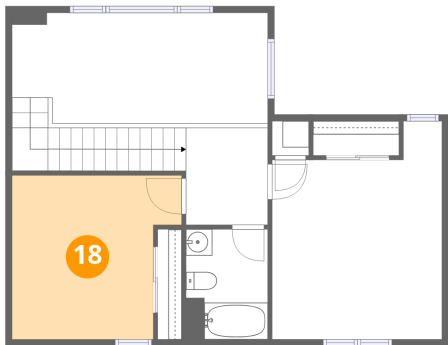
17 Floor 2 - Bedroom



Max Dimensions: 12'10" x 16'6"  
Calculated Area: 183 sq. ft  
Included: Yes

Heated: Yes  
Finished: Yes  
Enclosed: Yes  
Contiguous: Yes  
Permitted: Yes  
Wet space: No  
Addition: No  
Conversion: No

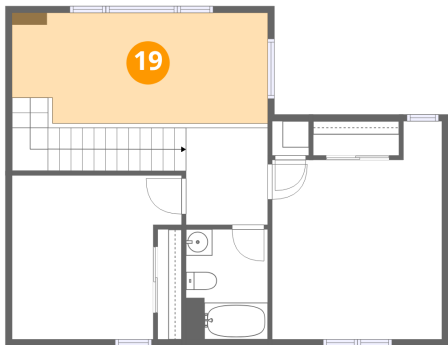
18 Floor 2 - Bedroom



Max Dimensions: 12'10" x 12'5"  
Calculated Area: 141 sq. ft  
Included: Yes

Heated: Yes  
Finished: Yes  
Enclosed: Yes  
Contiguous: Yes  
Permitted: Yes  
Wet space: No  
Addition: No  
Conversion: No

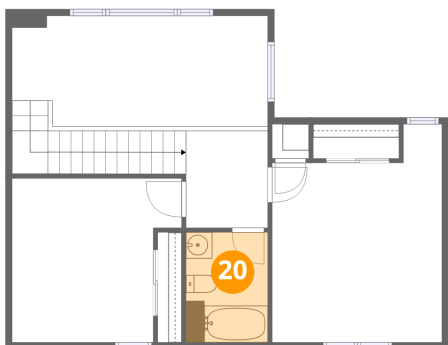
19 Floor 2 - Open To Below



Max Dimensions: 19'4" x 8'4"  
Calculated Area: 156 sq. ft  
Included: No

Heated: No  
Finished: No  
Enclosed: No  
Contiguous: Yes  
Permitted: No  
Wet space: No  
Addition: No  
Conversion: No

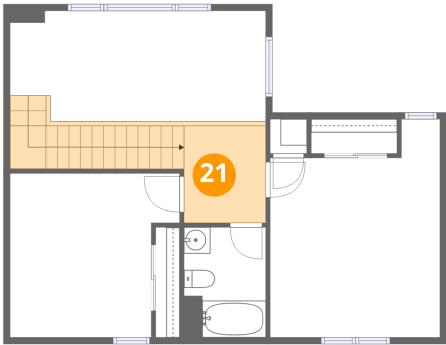
20 Floor 2 - Bath



Max Dimensions: 6'2" x 8'4"  
Calculated Area: 51 sq. ft  
Included: Yes

Heated: Yes  
Finished: Yes  
Enclosed: Yes  
Contiguous: Yes  
Permitted: Yes  
Wet space: Yes  
Addition: No  
Conversion: No

21 Floor 2 - Hall



Max Dimensions: 6'2" x 7'4"  
Calculated Area: 101 sq. ft  
Included: Yes

Heated: Yes  
Finished: Yes  
Enclosed: Yes  
Contiguous: Yes  
Permitted: Yes  
Wet space: No  
Addition: No  
Conversion: No