

# Home data report

## 277 Greenlawn Ave, Peterborough, ON, CA



**Total Area: 2033 sq. ft**

Basement: 411 sq. ft, 1st Floor: 1001 sq. ft, 2nd Floor: 621 sq. ft

Excluded: Utility 158 sq. ft, Patio 351 sq. ft, Stairwell 28 sq. ft, Walls: 191 sq. ft

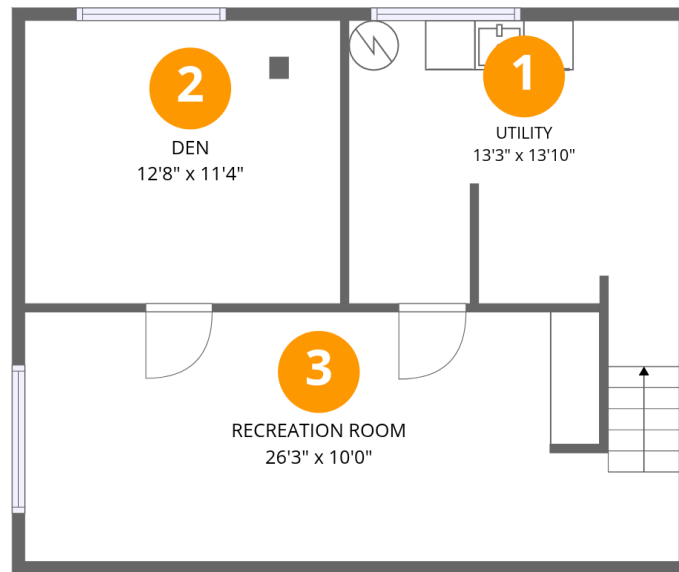
### Property summary

 **3** Floors

 **5** Bedrooms

 **2** Bathrooms

 **1** Half baths



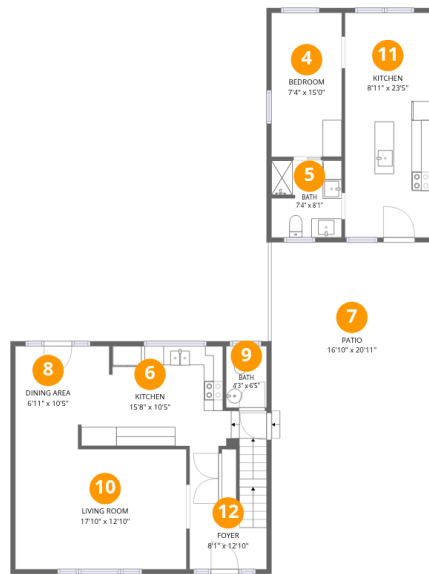
## Room dimensions

Floor 1 Below grade

Total: 411 sqft

Excluded: 158 sqft

#		Dimensions	sqft	Counted as living area
1	Utility	13'3" x 13'10"	155 sq. ft	No
2	Den	12'8" x 11'4"	144 sq. ft	Yes
3	Recreation Room	26'3" x 10'0"	254 sq. ft	Yes



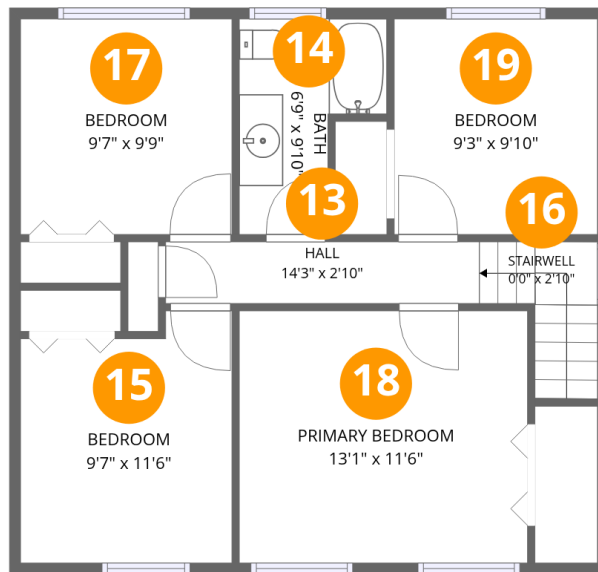
## Room dimensions

Floor 2

Total: 1001 sqft

Excluded: 351 sqft

#		Dimensions	sqft	Counted as living area
4	Bedroom	7'4" x 15'0"	110 sq. ft	Yes
5	Bath	7'4" x 8'1"	59 sq. ft	Yes
6	Kitchen	15'8" x 10'5"	170 sq. ft	Yes
7	Patio	16'10" x 20'11"	351 sq. ft	No
8	Dining Area	6'11" x 10'5"	71 sq. ft	Yes
9	Bath	4'3" x 6'5"	27 sq. ft	Yes
10	Living Room	17'10" x 12'10"	226 sq. ft	Yes
11	Kitchen	8'11" x 23'5"	210 sq. ft	Yes
12	Foyer	8'1" x 12'10"	103 sq. ft	Yes



## Room dimensions

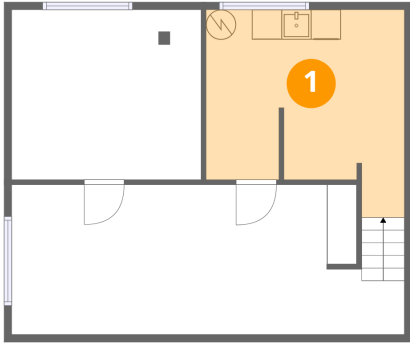
Floor 3

Total: 621 sqft

Excluded: 28 sqft

#		Dimensions	sqft	Counted as living area
13	Hall	14'3" x 2'10"	40 sq. ft	Yes
14	Bath	6'9" x 9'10"	51 sq. ft	Yes
15	Bedroom	9'7" x 11'6"	102 sq. ft	Yes
16	Stairwell	0'0" x 2'10"	28 sq. ft	No
17	Bedroom	9'7" x 9'9"	94 sq. ft	Yes
18	Primary Bedroom	13'1" x 11'6"	150 sq. ft	Yes
19	Bedroom	9'3" x 9'10"	91 sq. ft	Yes

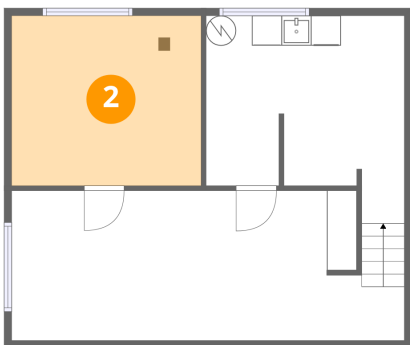
## 1 Floor 1 - Utility



Dimensions: 13'3" x 13'10"  
Area: 155 sq. ft  
Counted as living area: No

Heated: Yes  
Finished: No  
Enclosed: Yes  
Contiguous: Yes  
Permitted: Yes  
Wet space: No  
Addition: No  
Conversion: No

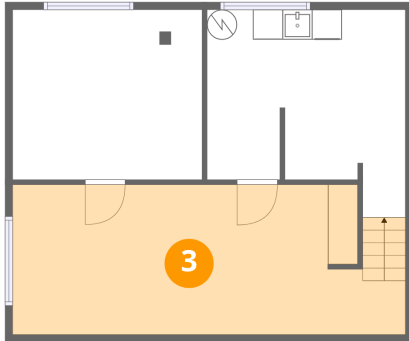
## 2 Floor 1 - Den



Dimensions: 12'8" x 11'4"  
Area: 144 sq. ft  
Counted as living area: Yes

Heated: Yes  
Finished: Yes  
Enclosed: Yes  
Contiguous: Yes  
Permitted: Yes  
Wet space: No  
Addition: No  
Conversion: No

### 3 Floor 1 - Recreation Room



Dimensions: 26'3" x 10'0"  
Area: 254 sq. ft  
Counted as living area: Yes

Heated: Yes  
Finished: Yes  
Enclosed: Yes  
Contiguous: Yes  
Permitted: Yes  
Wet space: No  
Addition: No  
Conversion: No

### 4 Floor 2 - Bedroom



Dimensions: 7'4" x 15'0"  
Area: 110 sq. ft  
Counted as living area: Yes

Heated: Yes  
Finished: Yes  
Enclosed: Yes  
Contiguous: Yes  
Permitted: Yes  
Wet space: No  
Addition: No  
Conversion: No

### 5 Floor 2 - Bath



Dimensions: 7'4" x 8'1"  
Area: 59 sq. ft  
Counted as living area: Yes

Heated: Yes  
Finished: Yes  
Enclosed: Yes  
Contiguous: Yes  
Permitted: Yes  
Wet space: Yes  
Addition: No  
Conversion: No

## 6 Floor 2 - Kitchen



Dimensions: 15'8" x 10'5"  
Area: 170 sq. ft  
Counted as living area: Yes

Heated: Yes  
Finished: Yes  
Enclosed: Yes  
Contiguous: Yes  
Permitted: Yes  
Wet space: No  
Addition: No  
Conversion: No

## 7 Floor 2 - Patio



Dimensions: 16'10" x 20'11"  
Area: 351 sq. ft  
Counted as living area: No

Heated: No  
Finished: No  
Enclosed: No  
Contiguous: Yes  
Permitted: Yes  
Wet space: No  
Addition: No  
Conversion: No

## 8 Floor 2 - Dining Area



Dimensions: 6'11" x 10'5"  
Area: 71 sq. ft  
Counted as living area: Yes

Heated: Yes  
Finished: Yes  
Enclosed: Yes  
Contiguous: Yes  
Permitted: Yes  
Wet space: No  
Addition: No  
Conversion: No

### 9 Floor 2 - Bath



Dimensions: 4'3" x 6'5"  
Area: 27 sq. ft  
Counted as living area: Yes

Heated: Yes  
Finished: Yes  
Enclosed: Yes  
Contiguous: Yes  
Permitted: Yes  
Wet space: Yes  
Addition: No  
Conversion: No

### 10 Floor 2 - Living Room



Dimensions: 17'10" x 12'10"  
Area: 226 sq. ft  
Counted as living area: Yes

Heated: Yes  
Finished: Yes  
Enclosed: Yes  
Contiguous: Yes  
Permitted: Yes  
Wet space: No  
Addition: No  
Conversion: No

### 11 Floor 2 - Kitchen



Dimensions: 8'11" x 23'5"  
Area: 210 sq. ft  
Counted as living area: Yes

Heated: Yes  
Finished: Yes  
Enclosed: Yes  
Contiguous: Yes  
Permitted: Yes  
Wet space: No  
Addition: No  
Conversion: No

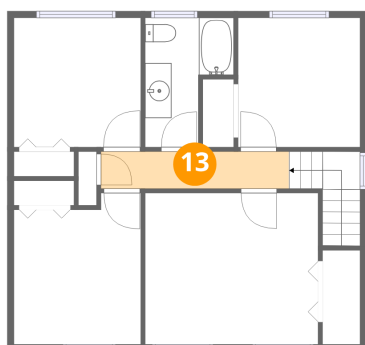
## 12 Floor 2 - Foyer



Dimensions: 8'1" x 12'10"  
Area: 103 sq. ft  
Counted as living area: Yes

Heated: Yes  
Finished: Yes  
Enclosed: Yes  
Contiguous: Yes  
Permitted: Yes  
Wet space: No  
Addition: No  
Conversion: No

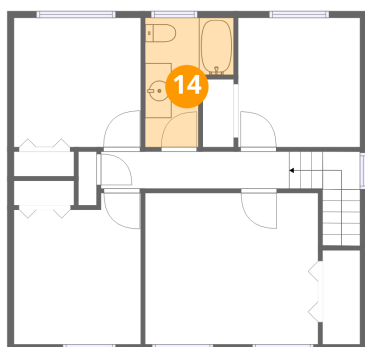
## 13 Floor 3 - Hall



Dimensions: 14'3" x 2'10"  
Area: 40 sq. ft  
Counted as living area: Yes

Heated: Yes  
Finished: Yes  
Enclosed: Yes  
Contiguous: Yes  
Permitted: Yes  
Wet space: No  
Addition: No  
Conversion: No

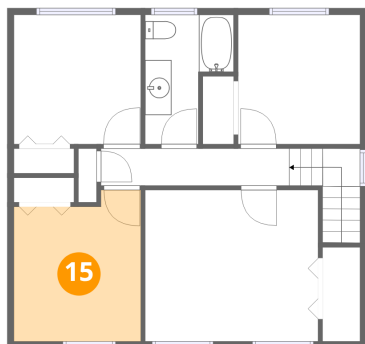
## 14 Floor 3 - Bath



Dimensions: 6'9" x 9'10"  
Area: 51 sq. ft  
Counted as living area: Yes

Heated: Yes  
Finished: Yes  
Enclosed: Yes  
Contiguous: Yes  
Permitted: Yes  
Wet space: Yes  
Addition: No  
Conversion: No

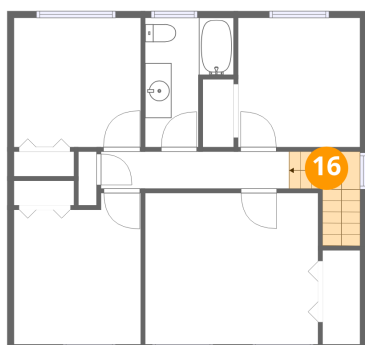
**15** Floor 3 - Bedroom



Dimensions: 9'7" x 11'6"  
Area: 102 sq. ft  
Counted as living area: Yes

Heated: Yes  
Finished: Yes  
Enclosed: Yes  
Contiguous: Yes  
Permitted: Yes  
Wet space: No  
Addition: No  
Conversion: No

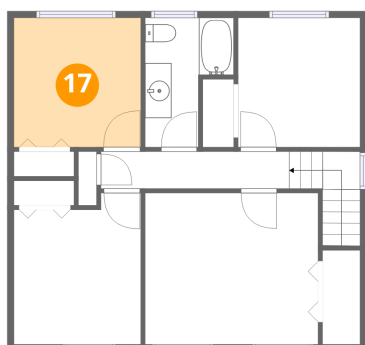
**16** Floor 3 - Stairwell



Dimensions: 0'0" x 2'10"  
Area: 28 sq. ft  
Counted as living area: No

Heated: No  
Finished: No  
Enclosed: No  
Contiguous: Yes  
Permitted: No  
Wet space: No  
Addition: No  
Conversion: No

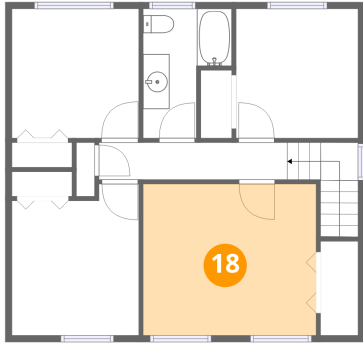
**17** Floor 3 - Bedroom



Dimensions: 9'7" x 9'9"  
Area: 94 sq. ft  
Counted as living area: Yes

Heated: Yes  
Finished: Yes  
Enclosed: Yes  
Contiguous: Yes  
Permitted: Yes  
Wet space: No  
Addition: No  
Conversion: No

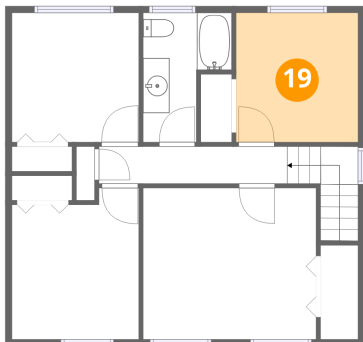
**18** Floor 3 - Primary Bedroom



Dimensions: 13'1" x 11'6"  
Area: 150 sq. ft  
Counted as living area: Yes

Heated: Yes  
Finished: Yes  
Enclosed: Yes  
Contiguous: Yes  
Permitted: Yes  
Wet space: No  
Addition: No  
Conversion: No

**19** Floor 3 - Bedroom



Dimensions: 9'3" x 9'10"  
Area: 91 sq. ft  
Counted as living area: Yes

Heated: Yes  
Finished: Yes  
Enclosed: Yes  
Contiguous: Yes  
Permitted: Yes  
Wet space: No  
Addition: No  
Conversion: No