

Total Area: 2872 sq. ft

1st Floor: 2872 sq. ft

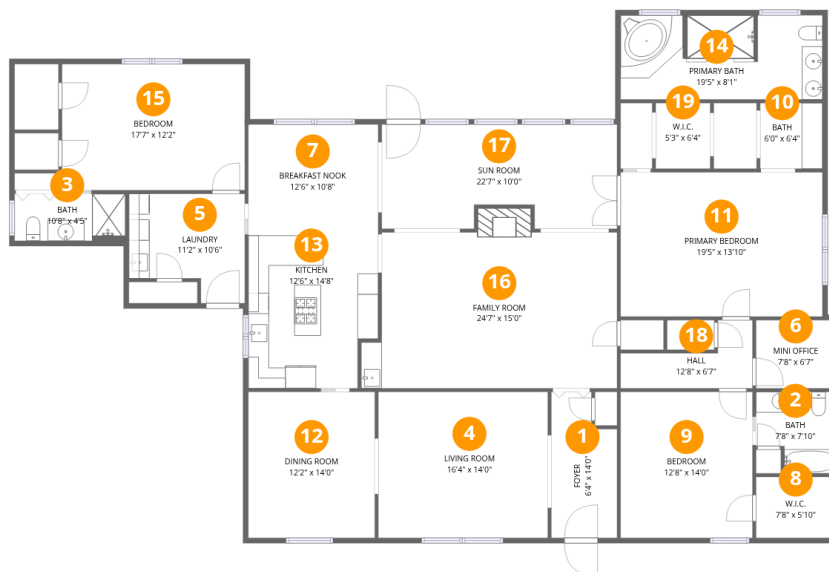
Excluded: Walls: 135 sq. ft

Property summary

 **1** Floors

 **3** Bedrooms

 **3** Bathrooms



Room dimensions

Floor 1

Total:2872sqft Excluded: 0sqft

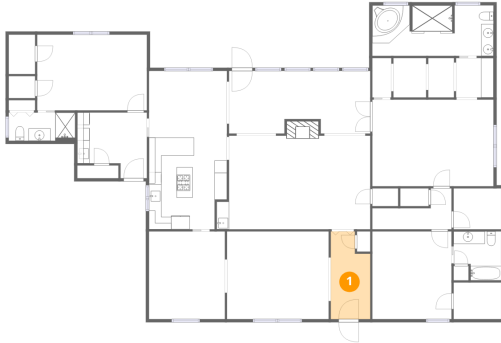
#		Dimensions	sqft	Counted as living area
1	Foyer	6'4" x 14'0"	80 sq. ft	Yes
2	Bath	7'8" x 7'10"	53 sq. ft	Yes
3	Bath	10'8" x 4'5"	48 sq. ft	Yes
4	Living Room	16'4" x 14'0"	229 sq. ft	Yes
5	Laundry	11'2" x 10'6"	101 sq. ft	Yes
6	Mini Office	7'8" x 6'7"	50 sq. ft	Yes
7	Breakfast Nook	12'6" x 10'8"	133 sq. ft	Yes
8	W.I.C.	7'8" x 5'10"	45 sq. ft	Yes
9	Bedroom	12'8" x 14'0"	178 sq. ft	Yes
10	Bath	6'0" x 6'4"	38 sq. ft	Yes
11	Primary Bedroom	19'5" x 13'10"	269 sq. ft	Yes

Home data report

513 Oak St,Somerville,TN,US

#		Dimensions	sqft	Counted as living area
12	Dining Room	12'2" x 14'0"	171 sq. ft	Yes
13	Kitchen	12'6" x 14'8"	174 sq. ft	Yes
14	Primary Bath	19'5" x 8'1"	154 sq. ft	Yes
15	Bedroom	17'7" x 12'2"	213 sq. ft	Yes
16	Family Room	24'7" x 15'0"	360 sq. ft	Yes
17	Sun Room	22'7" x 10'0"	214 sq. ft	Yes
18	Hall	12'8" x 6'7"	53 sq. ft	Yes
19	W.I.C.	5'3" x 6'4"	33 sq. ft	Yes

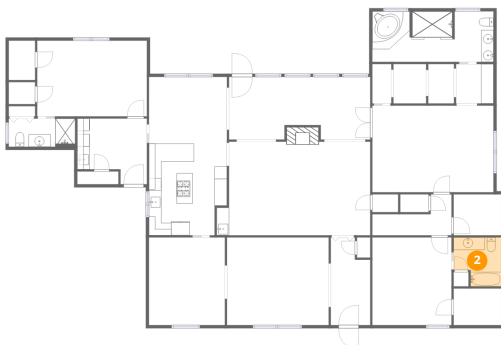
1 Floor 1 - Foyer



Dimensions: 6'4" x 14'0"
Area: 80 sq. ft
Counted as living area: Yes

Heated: Yes
Finished: Yes
Enclosed: Yes
Contiguous: Yes
Permitted: Yes
Wet space: No
Addition: No
Conversion: No

2 Floor 1 - Bath



Dimensions: 7'8" x 7'10"
Area: 53 sq. ft
Counted as living area: Yes

Heated: Yes
Finished: Yes
Enclosed: Yes
Contiguous: Yes
Permitted: Yes
Wet space: Yes
Addition: No
Conversion: No

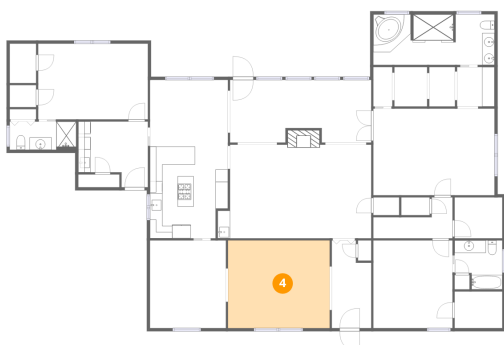
3 Floor 1 - Bath



Dimensions: 10'8" x 4'5"
Area: 48 sq. ft
Counted as living area: Yes

Heated: Yes
Finished: Yes
Enclosed: Yes
Contiguous: Yes
Permitted: Yes
Wet space: Yes
Addition: No
Conversion: No

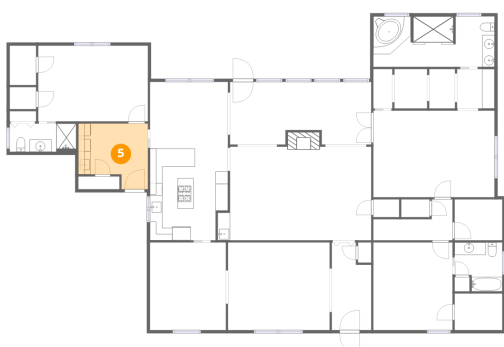
4 Floor 1 - Living Room



Dimensions: 16'4" x 14'0"
Area: 229 sq. ft
Counted as living area: Yes

Heated: Yes
Finished: Yes
Enclosed: Yes
Contiguous: Yes
Permitted: Yes
Wet space: No
Addition: No
Conversion: No

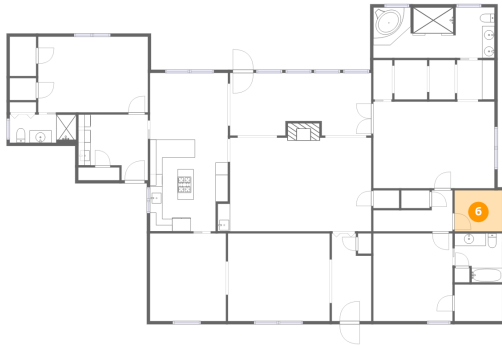
5 Floor 1 - Laundry



Dimensions: 11'2" x 10'6"
Area: 101 sq. ft
Counted as living area: Yes

Heated: Yes
Finished: Yes
Enclosed: Yes
Contiguous: Yes
Permitted: Yes
Wet space: No
Addition: No
Conversion: No

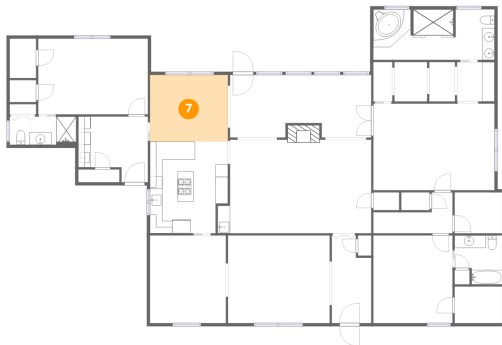
6 Floor 1 - Mini Office



Dimensions: 7'8" x 6'7"
Area: 50 sq. ft
Counted as living area: Yes

Heated: Yes
Finished: Yes
Enclosed: Yes
Contiguous: Yes
Permitted: Yes
Wet space: No
Addition: No
Conversion: No

7 Floor 1 - Breakfast Nook



Dimensions: 12'6" x 10'8"
Area: 133 sq. ft
Counted as living area: Yes

Heated: Yes
Finished: Yes
Enclosed: Yes
Contiguous: Yes
Permitted: Yes
Wet space: No
Addition: No
Conversion: No

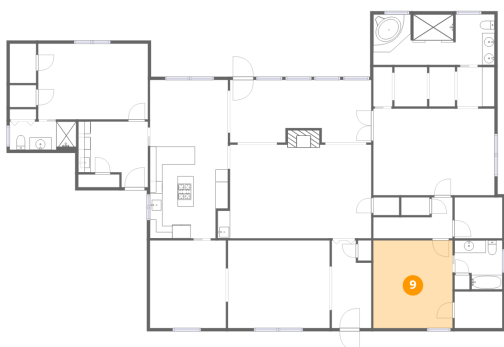
8 Floor 1 - W.I.C.



Dimensions: 7'8" x 5'10"
Area: 45 sq. ft
Counted as living area: Yes

Heated: Yes
Finished: Yes
Enclosed: Yes
Contiguous: Yes
Permitted: Yes
Wet space: No
Addition: No
Conversion: No

9 Floor 1 - Bedroom



Dimensions: 12'8" x 14'0"
Area: 178 sq. ft
Counted as living area: Yes

Heated: Yes
Finished: Yes
Enclosed: Yes
Contiguous: Yes
Permitted: Yes
Wet space: No
Addition: No
Conversion: No

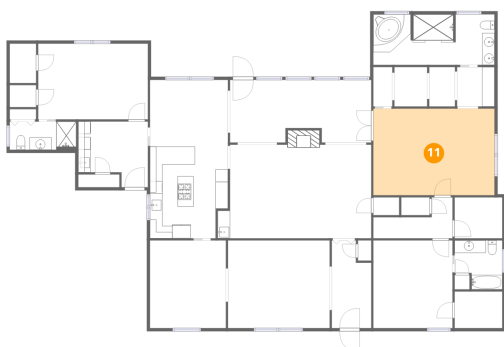
10 Floor 1 - Bath



Dimensions: 6'0" x 6'4"
Area: 38 sq. ft
Counted as living area: Yes

Heated: Yes
Finished: Yes
Enclosed: Yes
Contiguous: Yes
Permitted: Yes
Wet space: Yes
Addition: No
Conversion: No

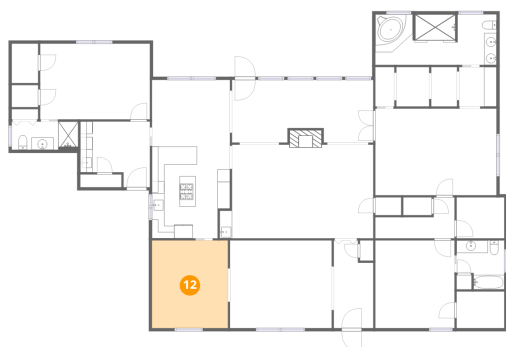
11 Floor 1 - Primary Bedroom



Dimensions: 19'5" x 13'10"
Area: 269 sq. ft
Counted as living area: Yes

Heated: Yes
Finished: Yes
Enclosed: Yes
Contiguous: Yes
Permitted: Yes
Wet space: No
Addition: No
Conversion: No

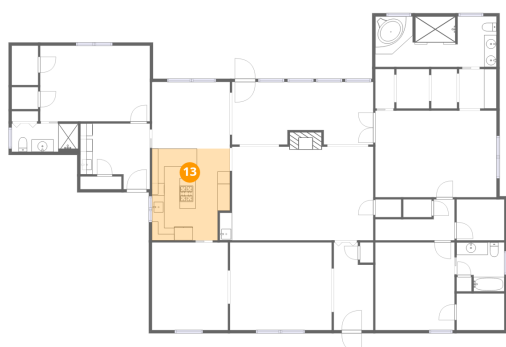
12 Floor 1 - Dining Room



Dimensions: 12'2" x 14'0"
Area: 171 sq. ft
Counted as living area: Yes

Heated: Yes
Finished: Yes
Enclosed: Yes
Contiguous: Yes
Permitted: Yes
Wet space: No
Addition: No
Conversion: No

13 Floor 1 - Kitchen



Dimensions: 12'6" x 14'8"
Area: 174 sq. ft
Counted as living area: Yes

Heated: Yes
Finished: Yes
Enclosed: Yes
Contiguous: Yes
Permitted: Yes
Wet space: No
Addition: No
Conversion: No

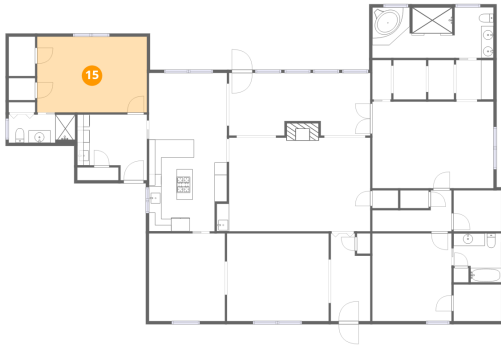
14 Floor 1 - Primary Bath



Dimensions: 19'5" x 8'1"
Area: 154 sq. ft
Counted as living area: Yes

Heated: Yes
Finished: Yes
Enclosed: Yes
Contiguous: Yes
Permitted: Yes
Wet space: Yes
Addition: No
Conversion: No

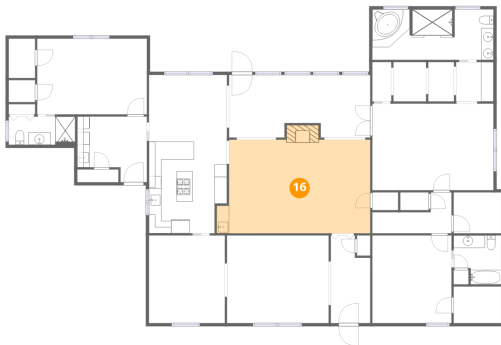
15 Floor 1 - Bedroom



Dimensions: 17'7" x 12'2"
Area: 213 sq. ft
Counted as living area: Yes

Heated: Yes
Finished: Yes
Enclosed: Yes
Contiguous: Yes
Permitted: Yes
Wet space: No
Addition: No
Conversion: No

16 Floor 1 - Family Room



Dimensions: 24'7" x 15'0"
Area: 360 sq. ft
Counted as living area: Yes

Heated: Yes
Finished: Yes
Enclosed: Yes
Contiguous: Yes
Permitted: Yes
Wet space: No
Addition: No
Conversion: No

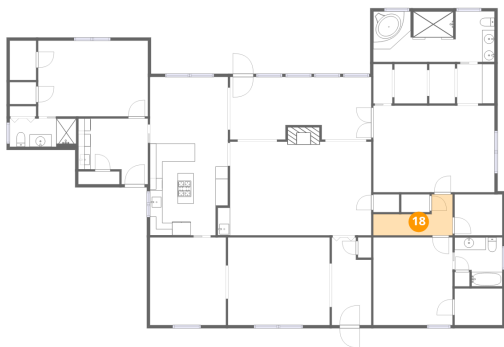
17 Floor 1 - Sun Room



Dimensions: 22'7" x 10'0"
Area: 214 sq. ft
Counted as living area: Yes

Heated: Yes
Finished: Yes
Enclosed: Yes
Contiguous: Yes
Permitted: Yes
Wet space: No
Addition: No
Conversion: No

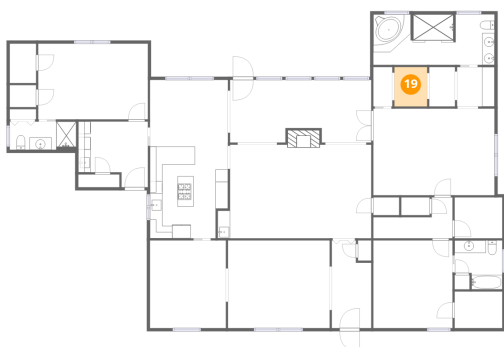
18 Floor 1 - Hall



Dimensions: 12'8" x 6'7"
Area: 53 sq. ft
Counted as living area: Yes

Heated: Yes
Finished: Yes
Enclosed: Yes
Contiguous: Yes
Permitted: Yes
Wet space: No
Addition: No
Conversion: No

19 Floor 1 - W.I.C.



Dimensions: 5'3" x 6'4"
Area: 33 sq. ft
Counted as living area: Yes

Heated: Yes
Finished: Yes
Enclosed: Yes
Contiguous: Yes
Permitted: Yes
Wet space: No
Addition: No
Conversion: No