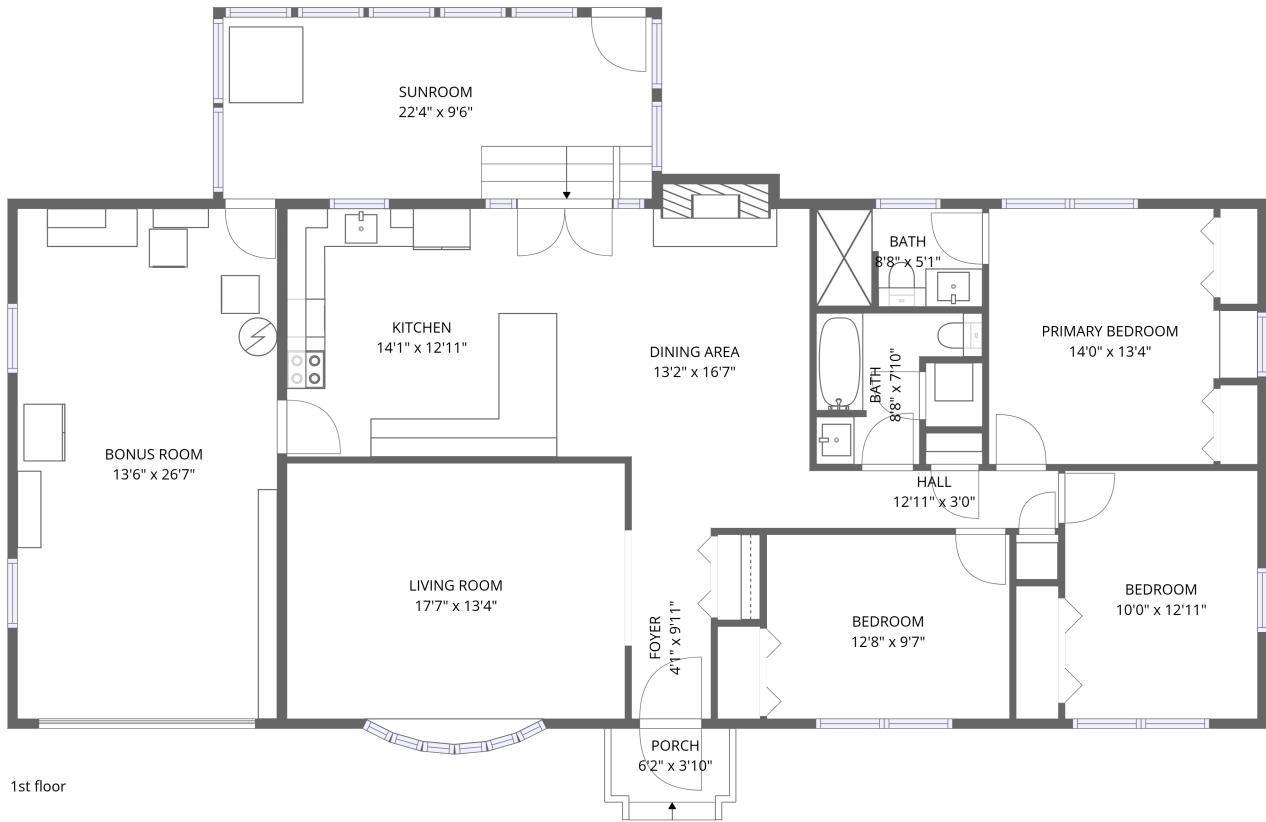


Home data report

429 Highfield Road, Salem, Virginia, United States



Total Area: 1713 sq. ft

1st Floor: 1713 sq. ft

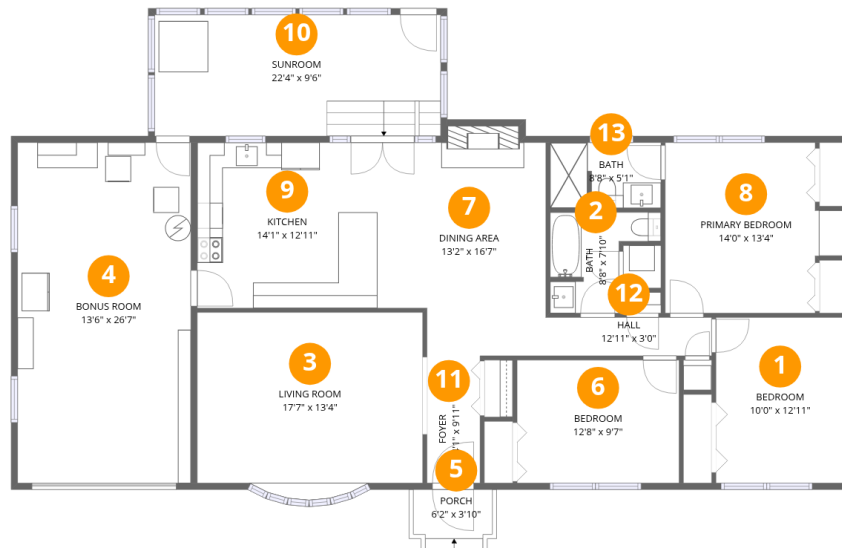
Excluded: Sunroom 211 sq. ft, Porch 27 sq. ft, Fireplace 8 sq. ft, Walls: 124 sq. ft

Property summary

 **1** Floors

 **3** Bedrooms

 **2** Bathrooms



Room dimensions

Floor 1

Total: 1713 sqft Excluded: 246 sqft

#		Dimensions	sqft	Counted as living area
1	Bedroom	10'0" x 12'11"	130 sq. ft	Yes
2	Bath	8'8" x 7'10"	68 sq. ft	Yes
3	Living Room	17'7" x 13'4"	234 sq. ft	Yes
4	Bonus Room	13'6" x 26'7"	359 sq. ft	Yes
5	Porch	6'2" x 3'10"	23 sq. ft	No
6	Bedroom	12'8" x 9'7"	121 sq. ft	Yes
7	Dining Area	13'2" x 16'7"	219 sq. ft	Yes
8	Primary Bedroom	14'0" x 13'4"	186 sq. ft	Yes
9	Kitchen	14'1" x 12'11"	182 sq. ft	Yes
10	Sunroom	22'4" x 9'6"	211 sq. ft	No
11	Foyer	4'1" x 9'11"	41 sq. ft	Yes

Home data report

429 Highfield Road,Salem,Virginia,United States

#		Dimensions	sqft	Counted as living area
12	Hall	12'11" x 3'0"	39 sq. ft	Yes
13	Bath	8'8" x 5'1"	44 sq. ft	Yes

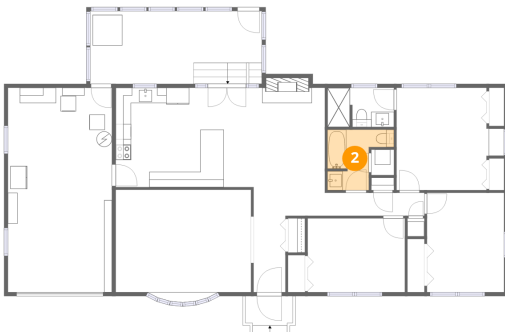
1 Floor 1 - Bedroom



Dimensions: 10'0" x 12'11"
Area: 130 sq. ft
Counted as living area: Yes

Heated: Yes
Finished: Yes
Enclosed: Yes
Contiguous: Yes
Permitted: Yes
Wet space: No
Addition: No
Conversion: No

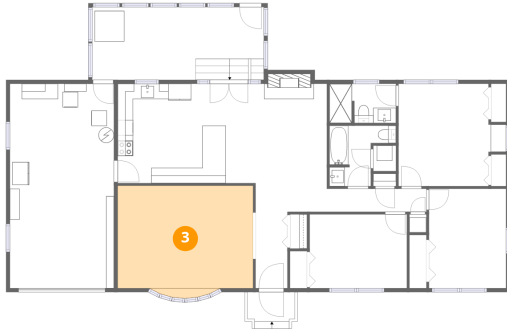
2 Floor 1 - Bath



Dimensions: 8'8" x 7'10"
Area: 68 sq. ft
Counted as living area: Yes

Heated: Yes
Finished: Yes
Enclosed: Yes
Contiguous: Yes
Permitted: Yes
Wet space: Yes
Addition: No
Conversion: No

3 Floor 1 - Living Room



Dimensions: 17'7" x 13'4"
Area: 234 sq. ft
Counted as living area: Yes

Heated: Yes
Finished: Yes
Enclosed: Yes
Contiguous: Yes
Permitted: Yes
Wet space: No
Addition: No
Conversion: No

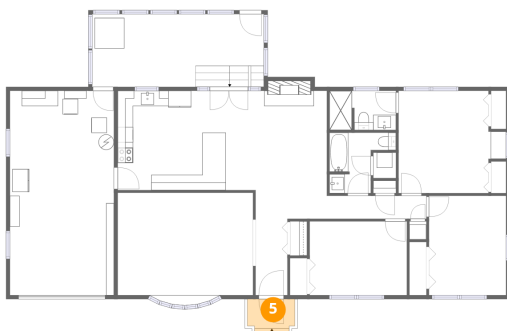
4 Floor 1 - Bonus Room



Dimensions: 13'6" x 26'7"
Area: 359 sq. ft
Counted as living area: Yes

Heated: Yes
Finished: Yes
Enclosed: Yes
Contiguous: Yes
Permitted: Yes
Wet space: No
Addition: No
Conversion: No

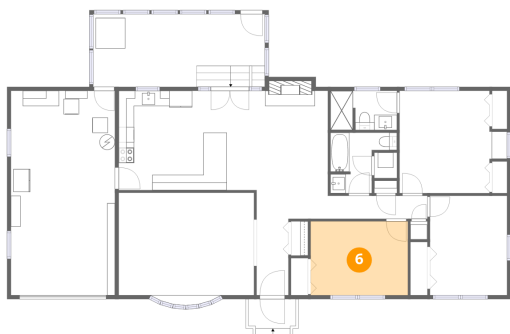
5 Floor 1 - Porch



Dimensions: 6'2" x 3'10"
Area: 23 sq. ft
Counted as living area: No

Heated: No
Finished: No
Enclosed: No
Contiguous: Yes
Permitted: Yes
Wet space: No
Addition: No
Conversion: No

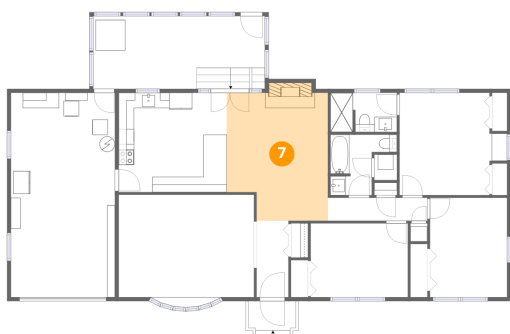
6 Floor 1 - Bedroom



Dimensions: 12'8" x 9'7"
Area: 121 sq. ft
Counted as living area: Yes

Heated: Yes
Finished: Yes
Enclosed: Yes
Contiguous: Yes
Permitted: Yes
Wet space: No
Addition: No
Conversion: No

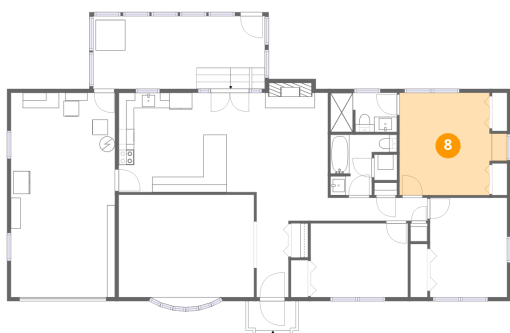
7 Floor 1 - Dining Area



Dimensions: 13'2" x 16'7"
Area: 219 sq. ft
Counted as living area: Yes

Heated: Yes
Finished: Yes
Enclosed: Yes
Contiguous: Yes
Permitted: Yes
Wet space: No
Addition: No
Conversion: No

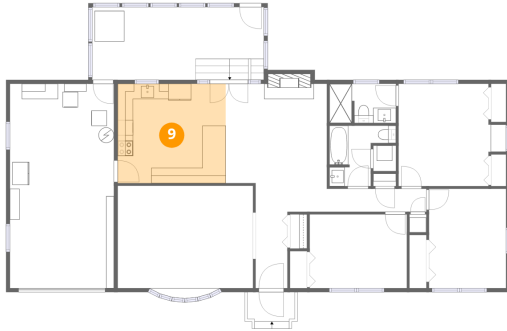
8 Floor 1 - Primary Bedroom



Dimensions: 14'0" x 13'4"
Area: 186 sq. ft
Counted as living area: Yes

Heated: Yes
Finished: Yes
Enclosed: Yes
Contiguous: Yes
Permitted: Yes
Wet space: No
Addition: No
Conversion: No

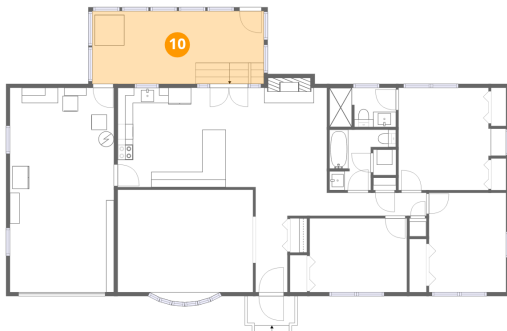
9 Floor 1 - Kitchen



Dimensions: 14'1" x 12'11"
Area: 182 sq. ft
Counted as living area: Yes

Heated: Yes
Finished: Yes
Enclosed: Yes
Contiguous: Yes
Permitted: Yes
Wet space: No
Addition: No
Conversion: No

10 Floor 1 - Sunroom



Dimensions: 22'4" x 9'6"
Area: 211 sq. ft
Counted as living area: No

Heated: No
Finished: No
Enclosed: No
Contiguous: Yes
Permitted: Yes
Wet space: No
Addition: No
Conversion: No

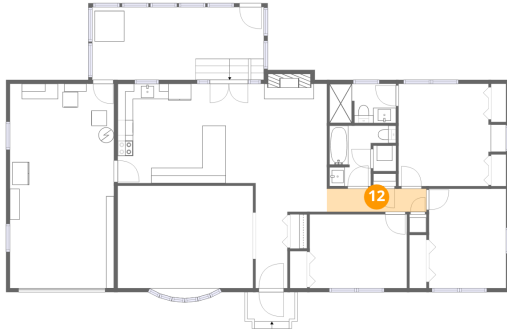
11 Floor 1 - Foyer



Dimensions: 4'1" x 9'11"
Area: 41 sq. ft
Counted as living area: Yes

Heated: Yes
Finished: Yes
Enclosed: Yes
Contiguous: Yes
Permitted: Yes
Wet space: No
Addition: No
Conversion: No

12 Floor 1 - Hall



Dimensions: 12'11" x 3'0"
Area: 39 sq. ft
Counted as living area: Yes

Heated: Yes
Finished: Yes
Enclosed: Yes
Contiguous: Yes
Permitted: Yes
Wet space: No
Addition: No
Conversion: No

13 Floor 1 - Bath



Dimensions: 8'8" x 5'1"
Area: 44 sq. ft
Counted as living area: Yes

Heated: Yes
Finished: Yes
Enclosed: Yes
Contiguous: Yes
Permitted: Yes
Wet space: Yes
Addition: No
Conversion: No