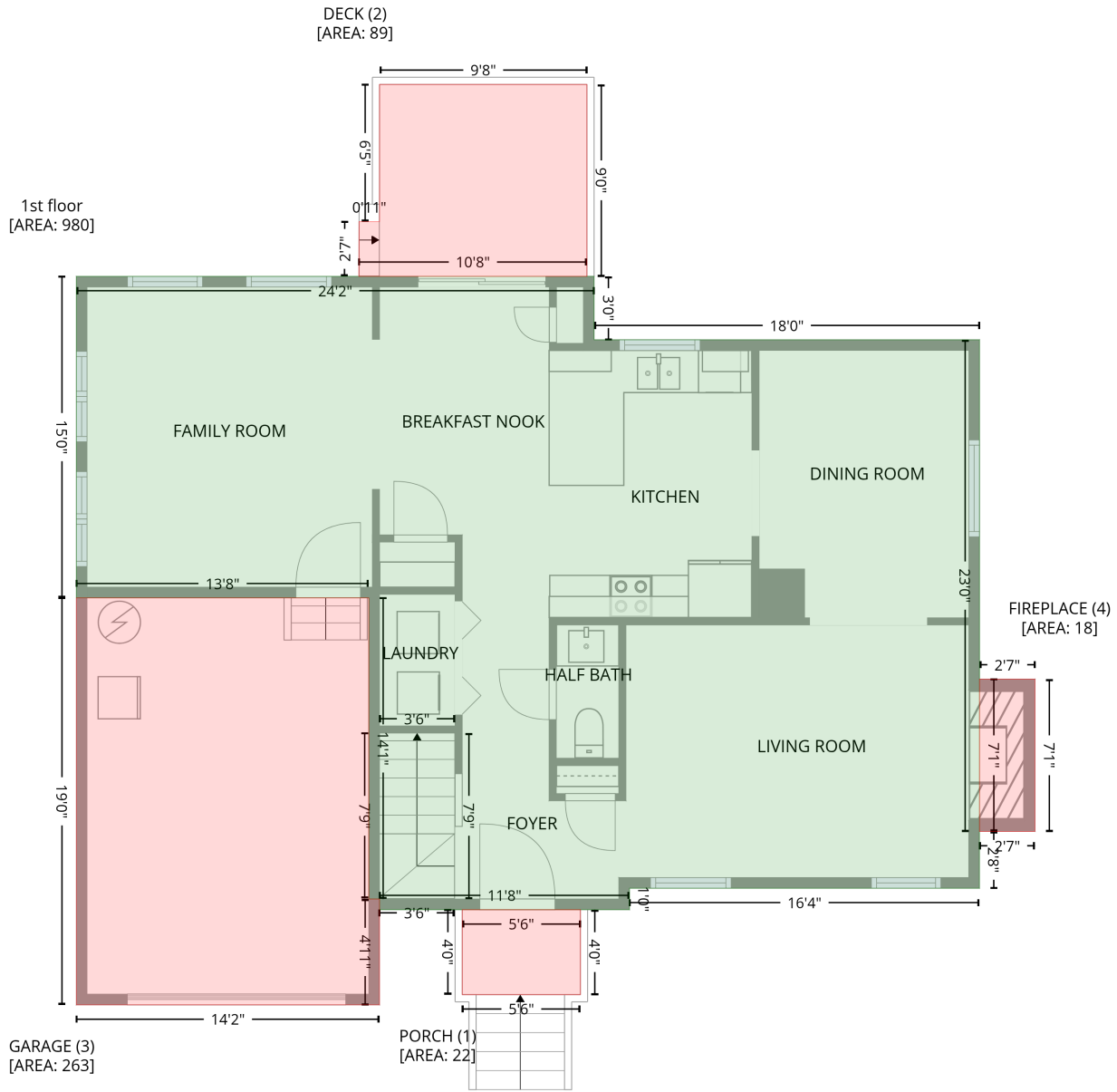


# 6519 Caverstone Lane, Wellington Forest, Durham, Durham County, North Carolina, United States, 27713

Gross Living Area: 1919 sq. ft

## Level 1



Space	Area (sq. ft)	Calculation
1st floor (Living area)	980	Coordinate Polygon Area Algorithm using inches $-((307.1 + 307.1) * (115.6 - 151.1) + (307.1 + 523.3) * (151.1 - 151.1) + (523.3 + 523.3) * (151.1 - 426.9) + (523.3 + 523.2) * (426.9 - 426.9) + (523.2 + 523.2) * (426.9 - 458.7) + (523.2 + 326.9) * (458.7 - 458.7) + (326.9 + 326.9) * (458.7 - 470.8) + (326.9 + 186.7) * (470.8 - 470.8) + (186.7 + 186.7) * (470.8 - 464.8) + (186.7 + 180.7) * (464.8 - 464.8) + (180.7 + 180.7) * (464.8 - 295.9) + (180.7 + 16.6) * (295.9 - 295.9) + (16.6 + 16.6) * (295.9 - 115.6) + (16.6 + 307.1) * (115.6 - 115.6)) * 0.5 * 0.00694$

# 6519 Caverstone Lane, Wellington Forest, Durham, Durham County, North Carolina, United States, 27713

Gross Living Area: 1919 sq. ft

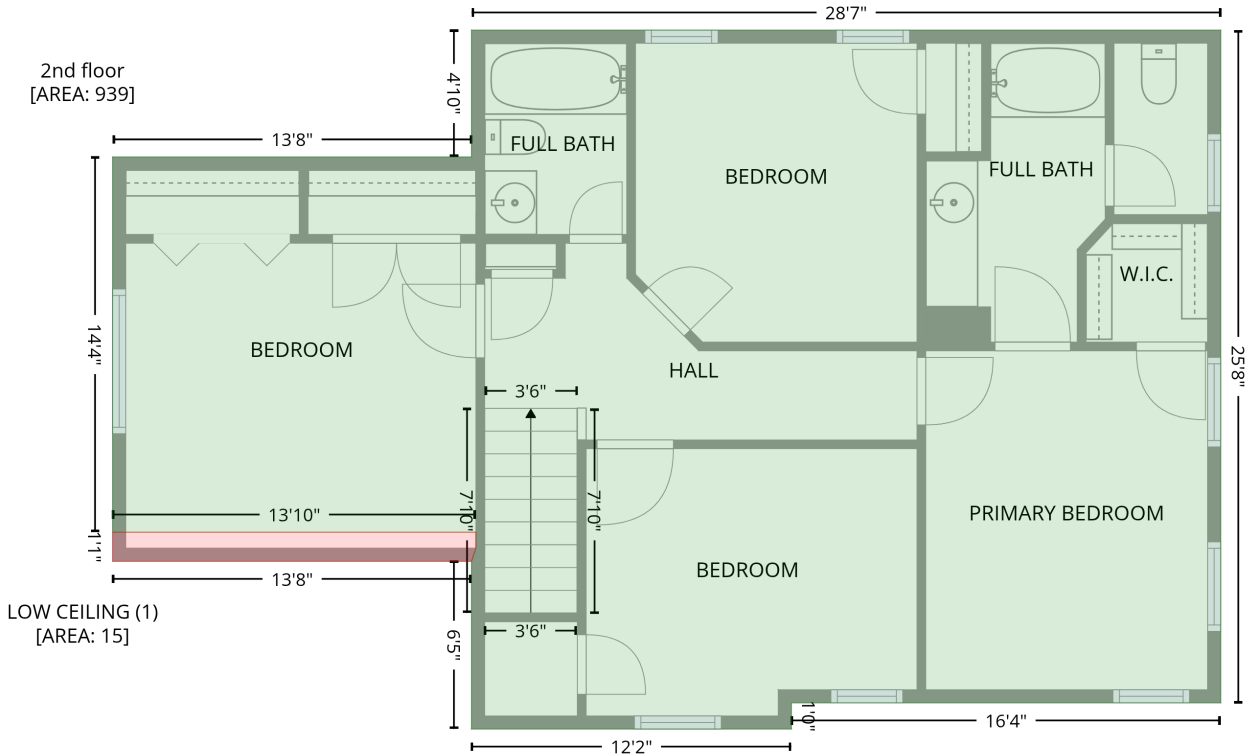
## Level 1

Space	Area (sq. ft)	Calculation <small>Coordinate Polygon Area Algorithm using inches</small>
PORCH (Non-living area)	22	$-((299.4 + 299.4) * (470.8 - 518.4) + (299.4 + 233.1) * (518.4 - 518.4) + (233.1 + 233.1) * (518.4 - 470.8) + (233.1 + 299.4) * (470.8 - 470.8)) * 0.5 * 0.00694$
DECK (Non-living area)	89	$-((303.1 + 303.1) * (7.9 - 115.6) + (303.1 + 175.1) * (115.6 - 115.6) + (175.1 + 175.2) * (115.6 - 84.9) + (175.2 + 186.7) * (84.9 - 84.9) + (186.7 + 186.7) * (84.9 - 7.9) + (186.7 + 303.1) * (7.9 - 7.9)) * 0.5 * 0.00694$
GARAGE (Non-living area)	263	$-((180.7 + 180.7) * (295.9 - 464.8) + (180.7 + 186.7) * (464.8 - 464.8) + (186.7 + 186.7) * (464.8 - 524.1) + (186.7 + 16.6) * (524.1 - 524.1) + (16.6 + 16.6) * (524.1 - 295.9) + (16.6 + 180.7) * (295.9 - 295.9)) * 0.5 * 0.00694$
FIREPLACE (Non-living area)	18	$-((554.4 + 554.4) * (341.4 - 426.9) + (554.4 + 523.3) * (426.9 - 426.9) + (523.3 + 523.3) * (426.9 - 341.4) + (523.3 + 554.4) * (341.4 - 341.4)) * 0.5 * 0.00694$

6519 Caverstone Lane, Wellington Forest, Durham, Durham County, North Carolina, United States, 27713

Gross Living Area: 1919 sq. ft

Level 2



Space	Area (sq. ft)	Calculation <small>Coordinate Polygon Area Algorithm using inches</small>
2nd floor (Living area)	939	$-((523.2 + 523.2) * (151.1 - 458.7) + (523.2 + 326.9) * (458.7 - 458.7) + (326.9 + 326.9) * (458.7 - 470.7) + (326.9 + 180.7) * (470.7 - 470.7) + (180.7 + 180.7) * (470.7 - 394) + (180.7 + 182.7) * (394 - 388) + (182.7 + 182.7) * (388 - 380.7) + (182.7 + 16.6) * (380.7 - 380.7) + (16.6 + 16.6) * (380.7 - 209.2) + (16.6 + 180.7) * (209.2 - 209.2) + (180.7 + 180.7) * (209.2 - 151.1) + (180.7 + 523.2) * (151.1 - 151.1)) * 0.5 * 0.00694$
LOW CEILING (Non-living area)	15	$-((182.7 + 182.7) * (380.7 - 388) + (182.7 + 180.7) * (388 - 394) + (180.7 + 16.6) * (394 - 394) + (16.6 + 16.6) * (394 - 380.7) + (16.6 + 182.7) * (380.7 - 380.7)) * 0.5 * 0.00694$