

Home report

211 Aspen Drive, Daleville, Botetourt County, Virginia, United States, 24083



Total Area: 2975 sq. ft

Below Ground: 633 sq. ft, Floor 2: 1180 sq. ft, Floor 3: 1162 sq. ft
Excluded: Storage 308 sq. ft, Utility 43 sq. ft, Covered patio 415 sq. ft, Fireplace 23 sq. ft, Garage 538 sq. ft, Deck 448 sq. ft, Walls: 241 sq. ft

Property summary

 **3** Floors

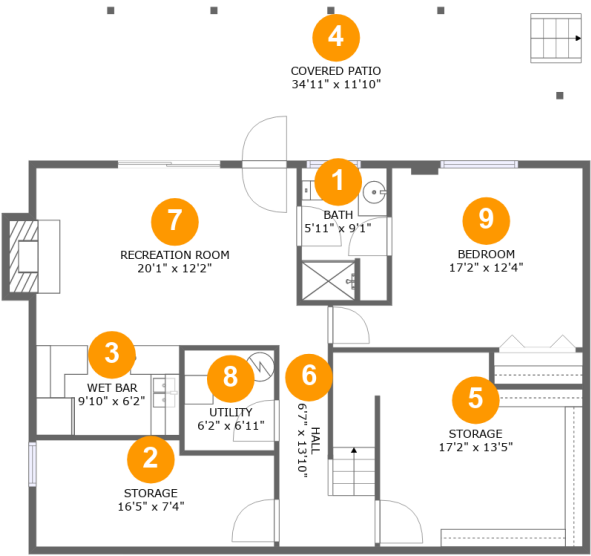
 **5** Bedrooms

 **4** Bathrooms

 **1** Garages

Home report

211 Aspen Drive, Daleville, Botetourt County, Virginia, United States, 24083



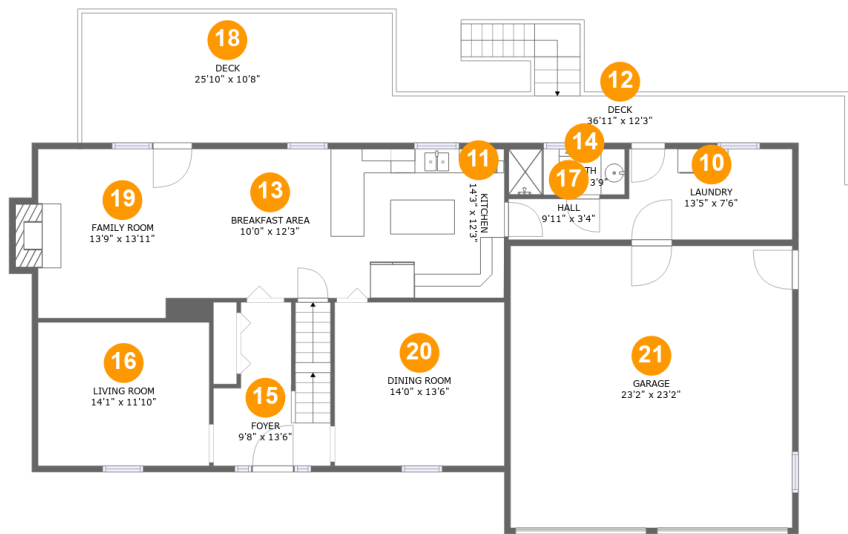
Room dimensions

Floor 1 Below ground Total:633sqft Excluded: 777sqft

#		Max Dimensions	sqft	Included
1	Bath	5'11" x 9'1"	53 sq. ft	Yes
2	Storage	16'5" x 7'4"	113 sq. ft	No
3	Wet Bar	9'10" x 6'2"	61 sq. ft	Yes
4	Covered Patio	34'11" x 11'10"	415 sq. ft	No
5	Storage	17'2" x 13'5"	191 sq. ft	No
6	Hall	6'7" x 13'10"	68 sq. ft	Yes
7	Recreation Room	20'1" x 12'2"	234 sq. ft	Yes
8	Utility	6'2" x 6'11"	43 sq. ft	No
9	Bedroom	17'2" x 12'4"	174 sq. ft	Yes

Home report

211 Aspen Drive, Daleville, Botetourt County, Virginia, United States, 24083



Room dimensions

Floor 2 Total:1180sqft Excluded: 998sqft

#		Max Dimensions	sqft	Included
10	Laundry	13'5" x 7'6"	100 sq. ft	Yes
11	Kitchen	14'3" x 12'3"	175 sq. ft	Yes
12	Deck	36'11" x 12'3"	175 sq. ft	No
13	Breakfast Area	10'0" x 12'3"	123 sq. ft	Yes
14	Bath	9'7" x 3'9"	36 sq. ft	Yes
15	Foyer	9'8" x 13'6"	111 sq. ft	Yes
16	Living Room	14'1" x 11'10"	166 sq. ft	Yes
17	Hall	9'11" x 3'4"	33 sq. ft	Yes
18	Deck	25'10" x 10'8"	274 sq. ft	No
19	Family Room	13'9" x 13'11"	200 sq. ft	Yes
20	Dining Room	14'0" x 13'6"	188 sq. ft	Yes

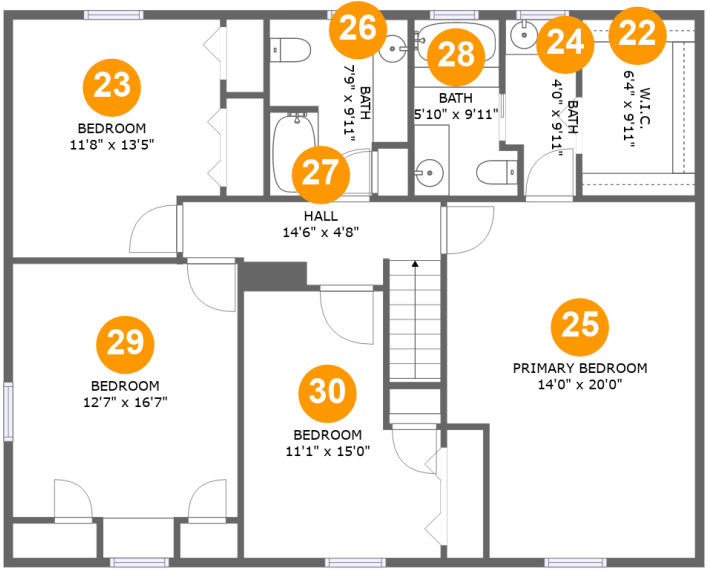
Home report

211 Aspen Drive, Daleville, Botetourt County, Virginia, United States, 24083

#		Max Dimensions	sqft	Included
21	Garage	23'2" x 23'2"	538 sq. ft	No

Home report

211 Aspen Drive, Daleville, Botetourt County, Virginia, United States, 24083



Room dimensions

Floor 3

Total:1162sqft

Excluded: 0sqft

#		Max Dimensions	sqft	Included
22	W.I.C.	6'4" x 9'11"	63 sq. ft	Yes
23	Bedroom	11'8" x 13'5"	148 sq. ft	Yes
24	Bath	4'0" x 9'11"	37 sq. ft	Yes
25	Primary Bedroom	14'0" x 20'0"	262 sq. ft	Yes
26	Bath	7'9" x 9'11"	70 sq. ft	Yes
27	Hall	14'6" x 4'8"	78 sq. ft	Yes
28	Bath	5'10" x 9'11"	50 sq. ft	Yes
29	Bedroom	12'7" x 16'7"	189 sq. ft	Yes
30	Bedroom	11'1" x 15'0"	141 sq. ft	Yes

211 Aspen Drive, Daleville, Botetourt County, Virginia, United States, 24083

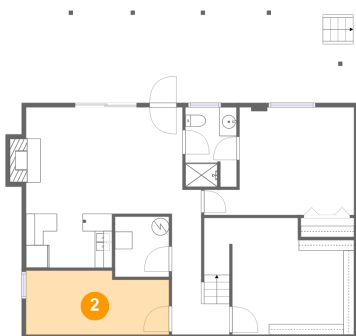
1 Floor 1 - Bath



Max Dimensions: 5'11" x 9'1"
Calculated Area: 53 sq. ft
Included: Yes

Heated: Yes
Finished: Yes
Enclosed: Yes
Contiguous: Yes
Permitted: Yes
Wet space: Yes
Addition: No
Conversion: No

2 Floor 1 - Storage

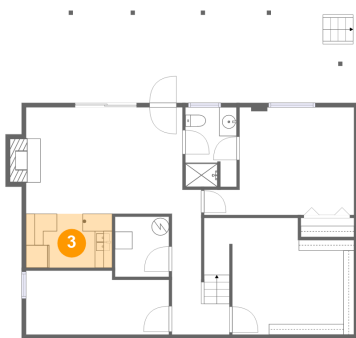


Max Dimensions: 16'5" x 7'4"
Calculated Area: 113 sq. ft
Included: No

Heated: No
Finished: No
Enclosed: No
Contiguous: Yes
Permitted: Yes
Wet space: No
Addition: No
Conversion: No

211 Aspen Drive, Daleville, Botetourt County, Virginia, United States, 24083

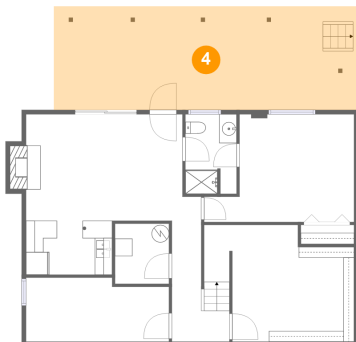
3 Floor 1 - Wet Bar



Max Dimensions: 9'10" x 6'2"
Calculated Area: 61 sq. ft
Included: Yes

Heated: Yes
Finished: Yes
Enclosed: Yes
Contiguous: Yes
Permitted: Yes
Wet space: No
Addition: No
Conversion: No

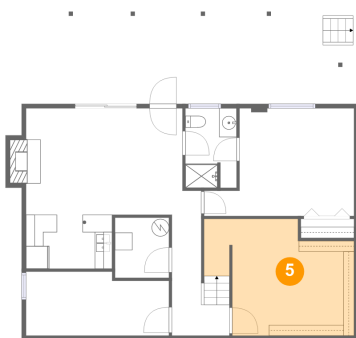
4 Floor 1 - Covered Patio



Max Dimensions: 34'11" x 11'10"
Calculated Area: 415 sq. ft
Included: No

Heated: No
Finished: Yes
Enclosed: No
Contiguous: Yes
Permitted: Yes
Wet space: No
Addition: No
Conversion: No

5 Floor 1 - Storage

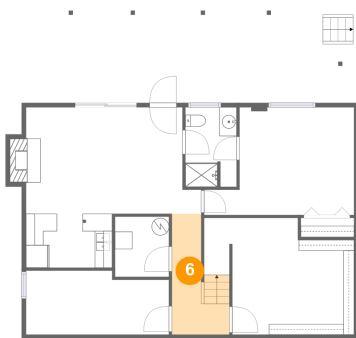


Max Dimensions: 17'2" x 13'5"
Calculated Area: 191 sq. ft
Included: No

Heated: No
Finished: No
Enclosed: No
Contiguous: Yes
Permitted: Yes
Wet space: No
Addition: No
Conversion: No

211 Aspen Drive, Daleville, Botetourt County, Virginia, United States, 24083

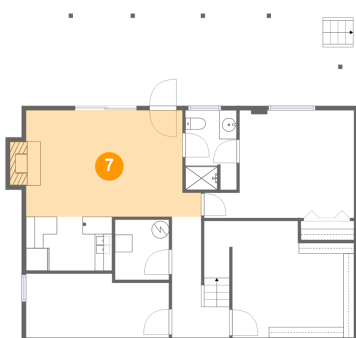
6 Floor 1 - Hall



Max Dimensions: 6'7" x 13'10"
Calculated Area: 68 sq. ft
Included: Yes

Heated: Yes
Finished: Yes
Enclosed: Yes
Contiguous: Yes
Permitted: Yes
Wet space: No
Addition: No
Conversion: No

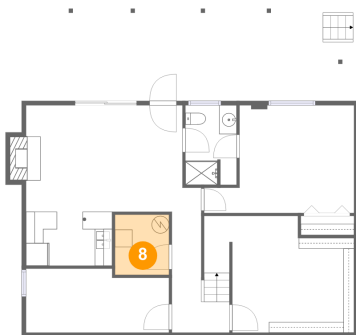
7 Floor 1 - Recreation Room



Max Dimensions: 20'1" x 12'2"
Calculated Area: 234 sq. ft
Included: Yes

Heated: Yes
Finished: Yes
Enclosed: Yes
Contiguous: Yes
Permitted: Yes
Wet space: No
Addition: No
Conversion: No

8 Floor 1 - Utility

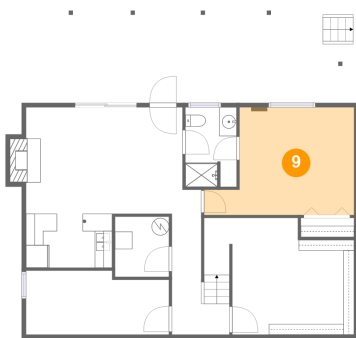


Max Dimensions: 6'2" x 6'11"
Calculated Area: 43 sq. ft
Included: No

Heated: Yes
Finished: No
Enclosed: Yes
Contiguous: Yes
Permitted: Yes
Wet space: No
Addition: No
Conversion: No

211 Aspen Drive, Daleville, Botetourt County, Virginia, United States, 24083

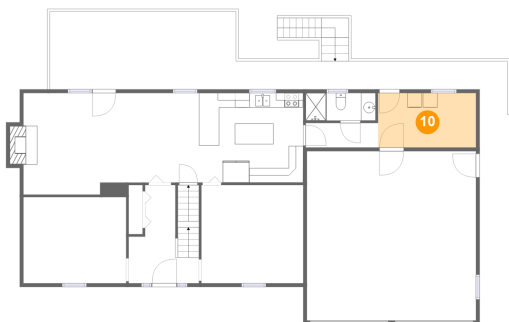
9 Floor 1 - Bedroom



Max Dimensions: 17'2" x 12'4"
Calculated Area: 174 sq. ft
Included: Yes

Heated: Yes
Finished: Yes
Enclosed: Yes
Contiguous: Yes
Permitted: Yes
Wet space: No
Addition: No
Conversion: No

10 Floor 2 - Laundry



Max Dimensions: 13'5" x 7'6"
Calculated Area: 100 sq. ft
Included: Yes

Heated: Yes
Finished: Yes
Enclosed: Yes
Contiguous: Yes
Permitted: Yes
Wet space: No
Addition: No
Conversion: No

11 Floor 2 - Kitchen



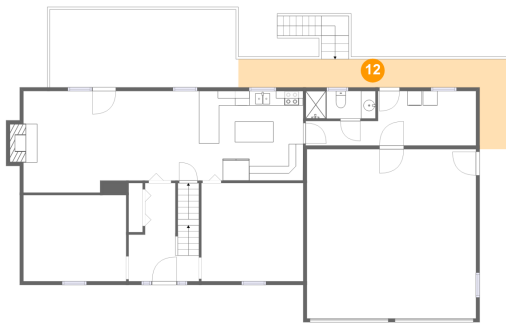
Max Dimensions: 14'3" x 12'3"
Calculated Area: 175 sq. ft
Included: Yes

Heated: Yes
Finished: Yes
Enclosed: Yes
Contiguous: Yes
Permitted: Yes
Wet space: No
Addition: No
Conversion: No

Home report

211 Aspen Drive, Daleville, Botetourt County, Virginia, United States, 24083

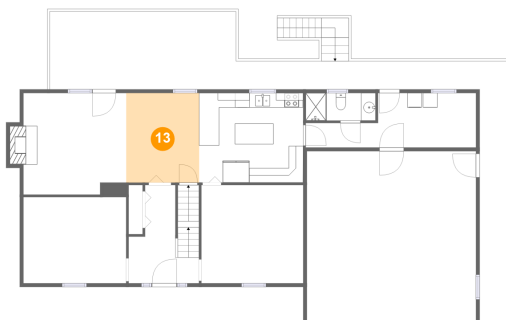
12 Floor 2 - Deck



Max Dimensions: 36'11" x 12'3"
Calculated Area: 175 sq. ft
Included: No

Heated: No
Finished: Yes
Enclosed: No
Contiguous: Yes
Permitted: Yes
Wet space: No
Addition: No
Conversion: No

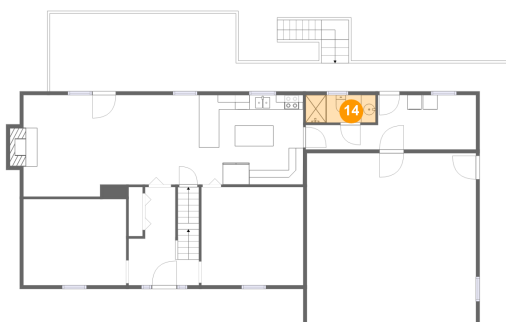
13 Floor 2 - Breakfast Area



Max Dimensions: 10'0" x 12'3"
Calculated Area: 123 sq. ft
Included: Yes

Heated: Yes
Finished: Yes
Enclosed: Yes
Contiguous: Yes
Permitted: Yes
Wet space: No
Addition: No
Conversion: No

14 Floor 2 - Bath

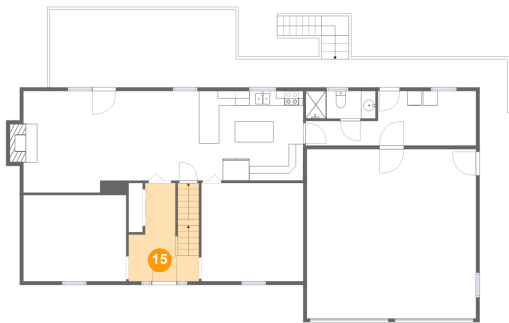


Max Dimensions: 9'7" x 3'9"
Calculated Area: 36 sq. ft
Included: Yes

Heated: Yes
Finished: Yes
Enclosed: Yes
Contiguous: Yes
Permitted: Yes
Wet space: Yes
Addition: No
Conversion: No

211 Aspen Drive, Daleville, Botetourt County, Virginia, United States, 24083

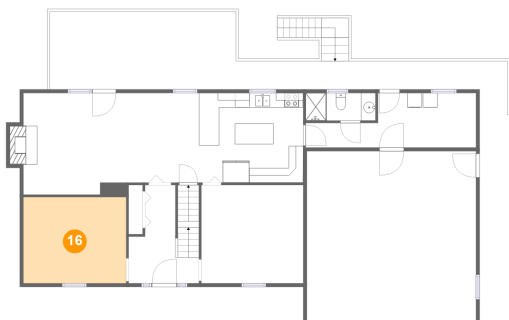
15 Floor 2 - Foyer



Max Dimensions: 9'8" x 13'6"
Calculated Area: 111 sq. ft
Included: Yes

Heated: Yes
Finished: Yes
Enclosed: Yes
Contiguous: Yes
Permitted: Yes
Wet space: No
Addition: No
Conversion: No

16 Floor 2 - Living Room



Max Dimensions: 14'1" x 11'10"
Calculated Area: 166 sq. ft
Included: Yes

Heated: Yes
Finished: Yes
Enclosed: Yes
Contiguous: Yes
Permitted: Yes
Wet space: No
Addition: No
Conversion: No

17 Floor 2 - Hall

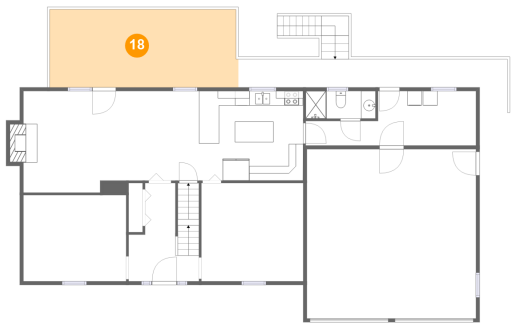


Max Dimensions: 9'11" x 3'4"
Calculated Area: 33 sq. ft
Included: Yes

Heated: Yes
Finished: Yes
Enclosed: Yes
Contiguous: Yes
Permitted: Yes
Wet space: No
Addition: No
Conversion: No

211 Aspen Drive, Daleville, Botetourt County, Virginia, United States, 24083

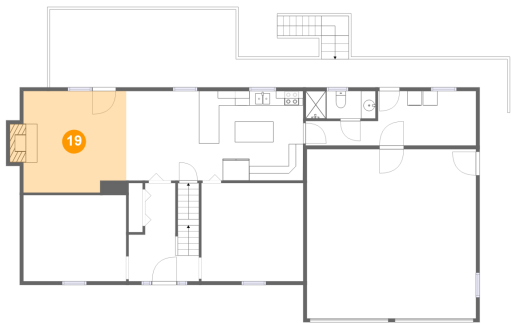
18 Floor 2 - Deck



Max Dimensions: 25'10" x 10'8"
Calculated Area: 274 sq. ft
Included: No

Heated: No
Finished: Yes
Enclosed: No
Contiguous: Yes
Permitted: Yes
Wet space: No
Addition: No
Conversion: No

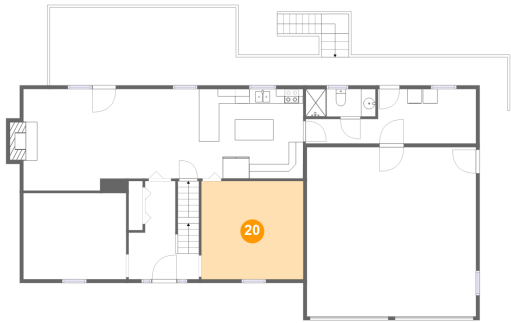
19 Floor 2 - Family Room



Max Dimensions: 13'9" x 13'11"
Calculated Area: 200 sq. ft
Included: Yes

Heated: Yes
Finished: Yes
Enclosed: Yes
Contiguous: Yes
Permitted: Yes
Wet space: No
Addition: No
Conversion: No

20 Floor 2 - Dining Room

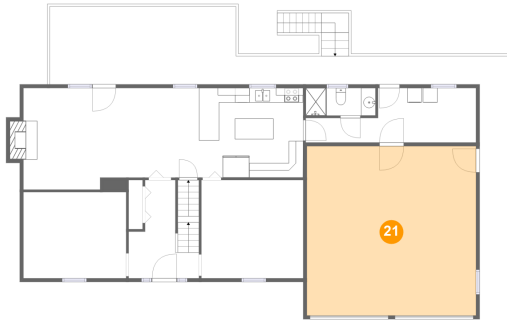


Max Dimensions: 14'0" x 13'6"
Calculated Area: 188 sq. ft
Included: Yes

Heated: Yes
Finished: Yes
Enclosed: Yes
Contiguous: Yes
Permitted: Yes
Wet space: No
Addition: No
Conversion: No

211 Aspen Drive, Daleville, Botetourt County, Virginia, United States, 24083

21 Floor 2 - Garage



Max Dimensions: 23'2" x 23'2"
Calculated Area: 538 sq. ft
Included: No

Heated: No
Finished: No
Enclosed: Yes
Contiguous: Yes
Permitted: Yes
Wet space: No
Addition: No
Conversion: No

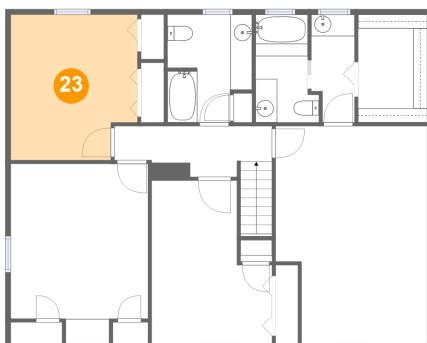
22 Floor 3 - W.I.C.



Max Dimensions: 6'4" x 9'11"
Calculated Area: 63 sq. ft
Included: Yes

Heated: Yes
Finished: Yes
Enclosed: Yes
Contiguous: Yes
Permitted: Yes
Wet space: No
Addition: No
Conversion: No

23 Floor 3 - Bedroom

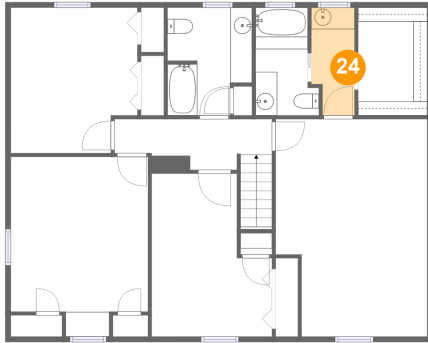


Max Dimensions: 11'8" x 13'5"
Calculated Area: 148 sq. ft
Included: Yes

Heated: Yes
Finished: Yes
Enclosed: Yes
Contiguous: Yes
Permitted: Yes
Wet space: No
Addition: No
Conversion: No

211 Aspen Drive, Daleville, Botetourt County, Virginia, United States, 24083

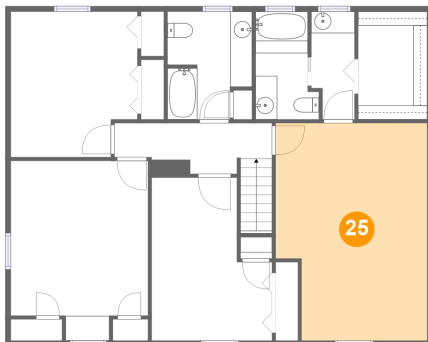
24 Floor 3 - Bath



Max Dimensions: 4'0" x 9'11"
Calculated Area: 37 sq. ft
Included: Yes

Heated: Yes
Finished: Yes
Enclosed: Yes
Contiguous: Yes
Permitted: Yes
Wet space: Yes
Addition: No
Conversion: No

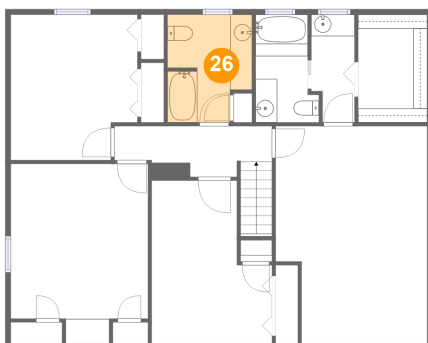
25 Floor 3 - Primary Bedroom



Max Dimensions: 14'0" x 20'0"
Calculated Area: 262 sq. ft
Included: Yes

Heated: Yes
Finished: Yes
Enclosed: Yes
Contiguous: Yes
Permitted: Yes
Wet space: No
Addition: No
Conversion: No

26 Floor 3 - Bath

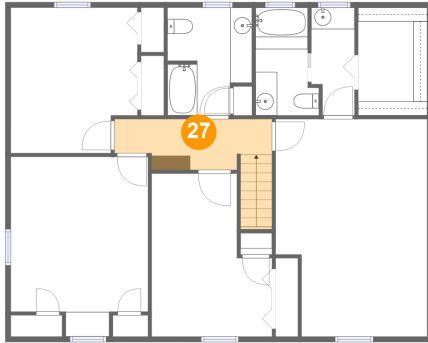


Max Dimensions: 7'9" x 9'11"
Calculated Area: 70 sq. ft
Included: Yes

Heated: Yes
Finished: Yes
Enclosed: Yes
Contiguous: Yes
Permitted: Yes
Wet space: Yes
Addition: No
Conversion: No

211 Aspen Drive, Daleville, Botetourt County, Virginia, United States, 24083

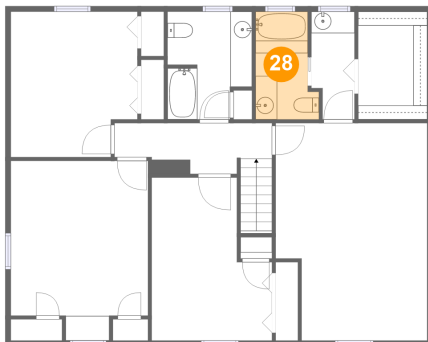
27 Floor 3 - Hall



Max Dimensions: 14'6" x 4'8"
Calculated Area: 78 sq. ft
Included: Yes

Heated: Yes
Finished: Yes
Enclosed: Yes
Contiguous: Yes
Permitted: Yes
Wet space: No
Addition: No
Conversion: No

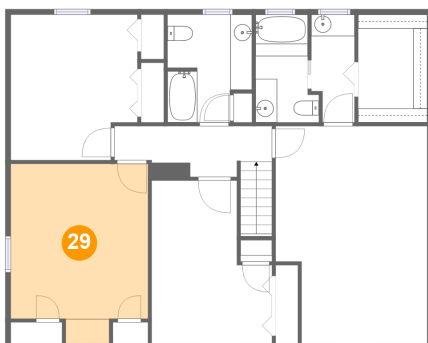
28 Floor 3 - Bath



Max Dimensions: 5'10" x 9'11"
Calculated Area: 50 sq. ft
Included: Yes

Heated: Yes
Finished: Yes
Enclosed: Yes
Contiguous: Yes
Permitted: Yes
Wet space: Yes
Addition: No
Conversion: No

29 Floor 3 - Bedroom

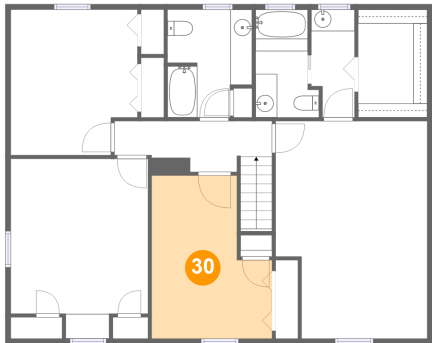


Max Dimensions: 12'7" x 16'7"
Calculated Area: 189 sq. ft
Included: Yes

Heated: Yes
Finished: Yes
Enclosed: Yes
Contiguous: Yes
Permitted: Yes
Wet space: No
Addition: No
Conversion: No

211 Aspen Drive, Daleville, Botetourt County, Virginia, United States, 24083

30 Floor 3 - Bedroom



Max Dimensions: 11'1" x 15'0"
Calculated Area: 141 sq. ft
Included: Yes

Heated: Yes
Finished: Yes
Enclosed: Yes
Contiguous: Yes
Permitted: Yes
Wet space: No
Addition: No
Conversion: No