

Home data report

1829 Crestmore Pl, Fort Collins, CO, US

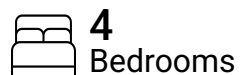


Total Area: 1635 sq. ft

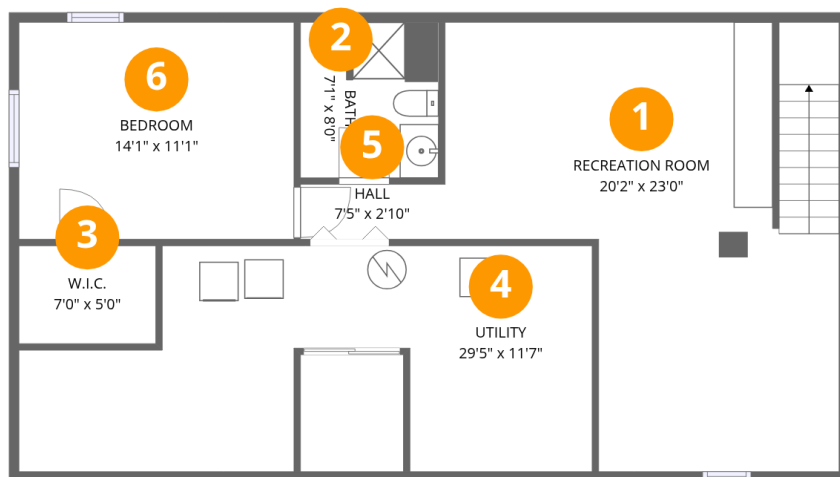
Basement: 667 sq. ft, 1st Floor: 968 sq. ft

Excluded: Undefined 38 sq. ft, Utility 263 sq. ft, Garage 236 sq. ft, Screened porch 106 sq. ft, Walls: 171 sq. ft

Property summary



1829 Crestmore Pl, Fort Collins, CO, US



Room dimensions

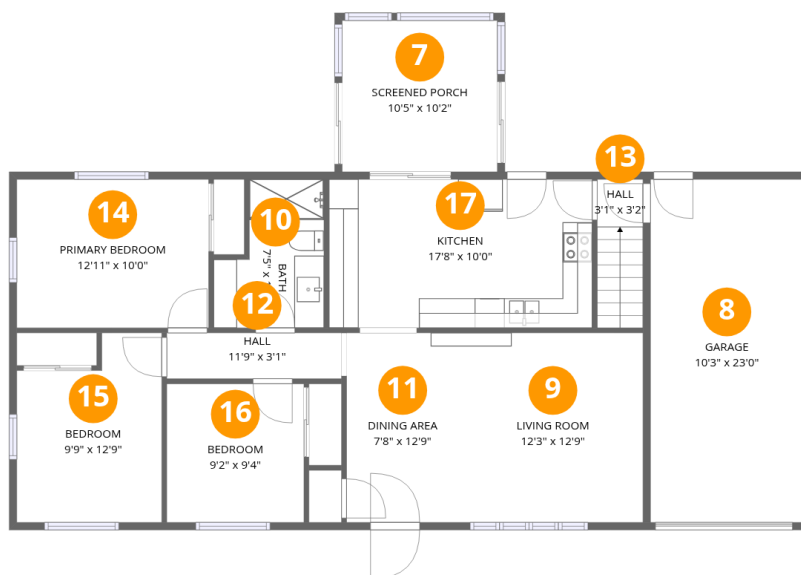
Floor 1 Below grade

Total:667sqft

Excluded: 301sqft

#		Dimensions	sqft	Counted as living area
1	Recreation Room	20'2" x 23'0"	368 sq. ft	Yes
2	Bath	7'1" x 8'0"	55 sq. ft	Yes
3	W.I.C.	7'0" x 5'0"	35 sq. ft	Yes
4	Utility	29'5" x 11'7"	263 sq. ft	No
5	Hall	7'5" x 2'10"	21 sq. ft	Yes
6	Bedroom	14'1" x 11'1"	157 sq. ft	Yes

1829 Crestmore Pl, Fort Collins, CO, US



Room dimensions

Floor 2

Total: 968sqft Excluded: 342sqft

#		Dimensions	sqft	Counted as living area
7	Screened Porch	10'5" x 10'2"	106 sq. ft	No
8	Garage	10'3" x 23'0"	236 sq. ft	No
9	Living Room	12'3" x 12'9"	156 sq. ft	Yes
10	Bath	7'5" x 10'0"	61 sq. ft	Yes
11	Dining Area	7'8" x 12'9"	97 sq. ft	Yes
12	Hall	11'9" x 3'1"	36 sq. ft	Yes
13	Hall	3'1" x 3'2"	31 sq. ft	Yes
14	Primary Bedroom	12'11" x 10'0"	128 sq. ft	Yes
15	Bedroom	9'9" x 12'9"	109 sq. ft	Yes
16	Bedroom	9'2" x 9'4"	86 sq. ft	Yes
17	Kitchen	17'8" x 10'0"	176 sq. ft	Yes

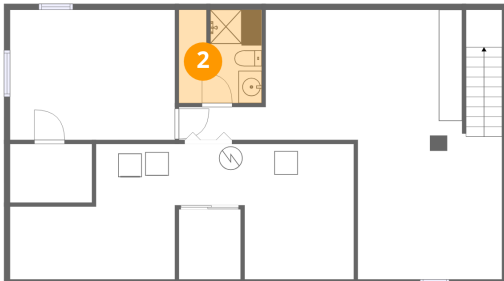
1 Floor 1 - Recreation Room



Dimensions: 20'2" x 23'0"
Area: 368 sq. ft
Counted as living area: Yes

Heated: Yes
Finished: Yes
Enclosed: Yes
Contiguous: Yes
Permitted: Yes
Wet space: No
Addition: No
Conversion: No

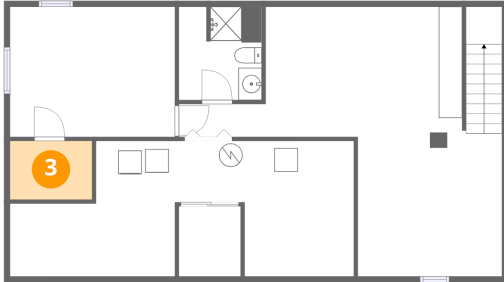
2 Floor 1 - Bath



Dimensions: 7'1" x 8'0"
Area: 55 sq. ft
Counted as living area: Yes

Heated: Yes
Finished: Yes
Enclosed: Yes
Contiguous: Yes
Permitted: Yes
Wet space: Yes
Addition: No
Conversion: No

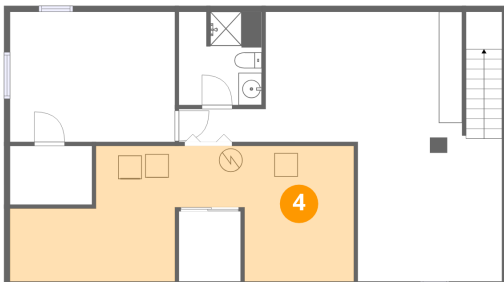
3 Floor 1 - W.I.C.



Dimensions: 7'0" x 5'0"
Area: 35 sq. ft
Counted as living area: Yes

Heated: Yes
Finished: Yes
Enclosed: Yes
Contiguous: Yes
Permitted: Yes
Wet space: No
Addition: No
Conversion: No

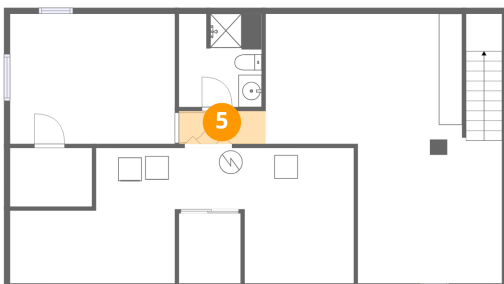
4 Floor 1 - Utility



Dimensions: 29'5" x 11'7"
Area: 263 sq. ft
Counted as living area: No

Heated: Yes
Finished: No
Enclosed: Yes
Contiguous: Yes
Permitted: Yes
Wet space: No
Addition: No
Conversion: No

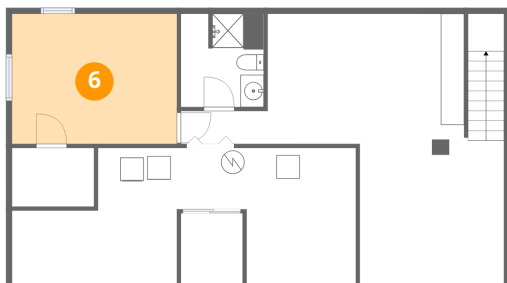
5 Floor 1 - Hall



Dimensions: 7'5" x 2'10"
Area: 21 sq. ft
Counted as living area: Yes

Heated: Yes
Finished: Yes
Enclosed: Yes
Contiguous: Yes
Permitted: Yes
Wet space: No
Addition: No
Conversion: No

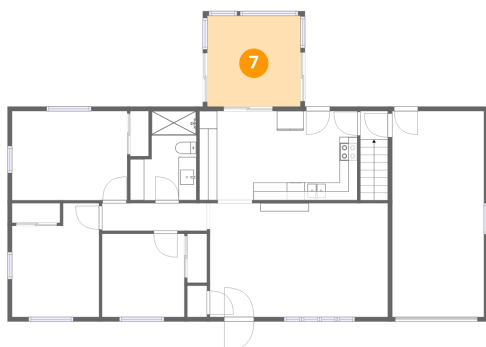
6 Floor 1 - Bedroom



Dimensions: 14'1" x 11'1"
Area: 157 sq. ft
Counted as living area: Yes

Heated: Yes
Finished: Yes
Enclosed: Yes
Contiguous: Yes
Permitted: Yes
Wet space: No
Addition: No
Conversion: No

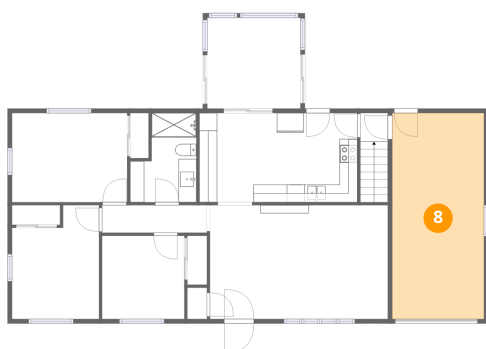
7 Floor 2 - Screened Porch



Dimensions: 10'5" x 10'2"
Area: 106 sq. ft
Counted as living area: No

Heated: No
Finished: No
Enclosed: No
Contiguous: Yes
Permitted: Yes
Wet space: No
Addition: No
Conversion: No

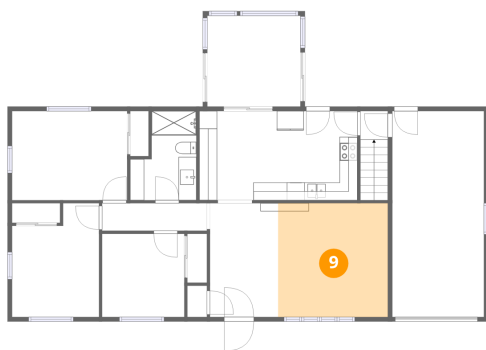
8 Floor 2 - Garage



Dimensions: 10'3" x 23'0"
Area: 236 sq. ft
Counted as living area: No

Heated: No
Finished: No
Enclosed: Yes
Contiguous: Yes
Permitted: Yes
Wet space: No
Addition: No
Conversion: No

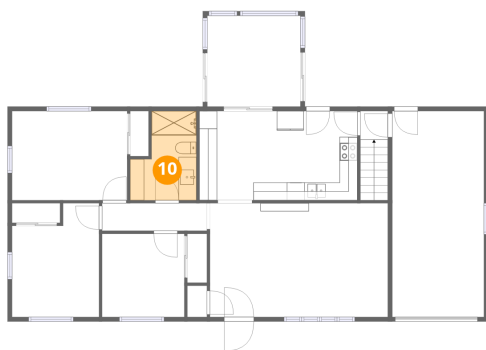
9 Floor 2 - Living Room



Dimensions: 12'3" x 12'9"
Area: 156 sq. ft
Counted as living area: Yes

Heated: Yes
Finished: Yes
Enclosed: Yes
Contiguous: Yes
Permitted: Yes
Wet space: No
Addition: No
Conversion: No

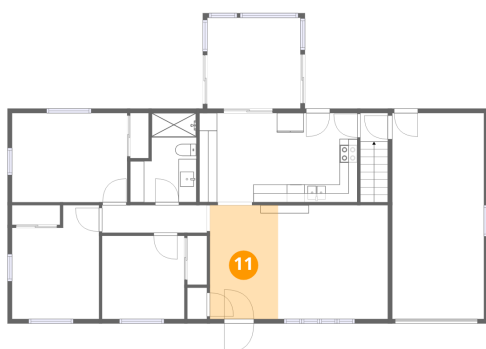
10 Floor 2 - Bath



Dimensions: 7'5" x 10'0"
Area: 61 sq. ft
Counted as living area: Yes

Heated: Yes
Finished: Yes
Enclosed: Yes
Contiguous: Yes
Permitted: Yes
Wet space: Yes
Addition: No
Conversion: No

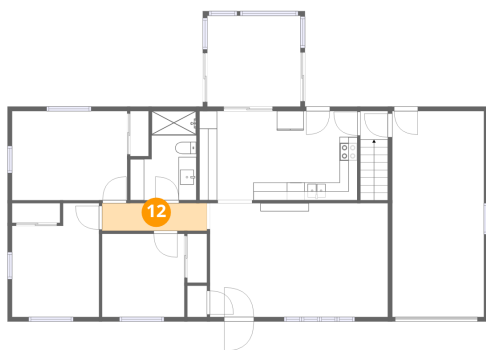
11 Floor 2 - Dining Area



Dimensions: 7'8" x 12'9"
Area: 97 sq. ft
Counted as living area: Yes

Heated: Yes
Finished: Yes
Enclosed: Yes
Contiguous: Yes
Permitted: Yes
Wet space: No
Addition: No
Conversion: No

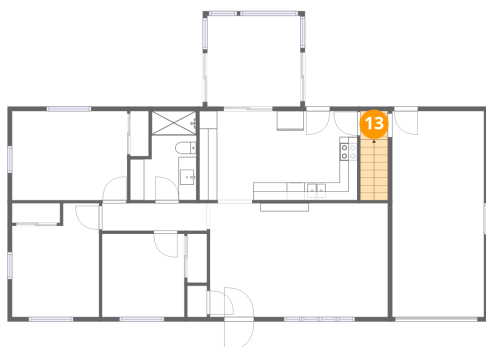
12 Floor 2 - Hall



Dimensions: 11'9" x 3'1"
Area: 36 sq. ft
Counted as living area: Yes

Heated: Yes
Finished: Yes
Enclosed: Yes
Contiguous: Yes
Permitted: Yes
Wet space: No
Addition: No
Conversion: No

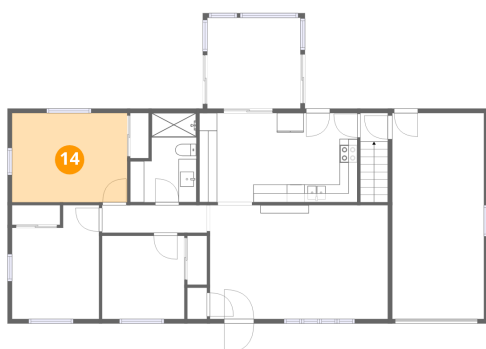
13 Floor 2 - Hall



Dimensions: 3'1" x 3'2"
Area: 31 sq. ft
Counted as living area: Yes

Heated: Yes
Finished: Yes
Enclosed: Yes
Contiguous: Yes
Permitted: Yes
Wet space: No
Addition: No
Conversion: No

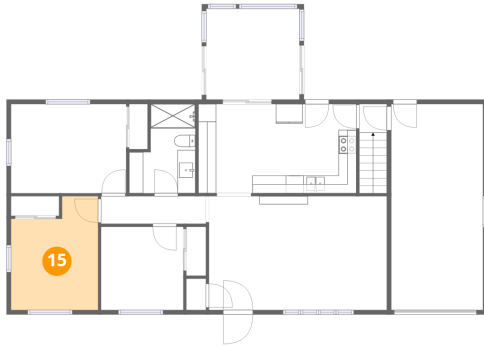
14 Floor 2 - Primary Bedroom



Dimensions: 12'11" x 10'0"
Area: 128 sq. ft
Counted as living area: Yes

Heated: Yes
Finished: Yes
Enclosed: Yes
Contiguous: Yes
Permitted: Yes
Wet space: No
Addition: No
Conversion: No

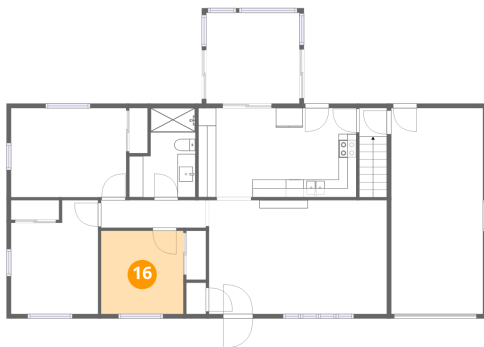
15 Floor 2 - Bedroom



Dimensions: 9'9" x 12'9"
Area: 109 sq. ft
Counted as living area: Yes

Heated: Yes
Finished: Yes
Enclosed: Yes
Contiguous: Yes
Permitted: Yes
Wet space: No
Addition: No
Conversion: No

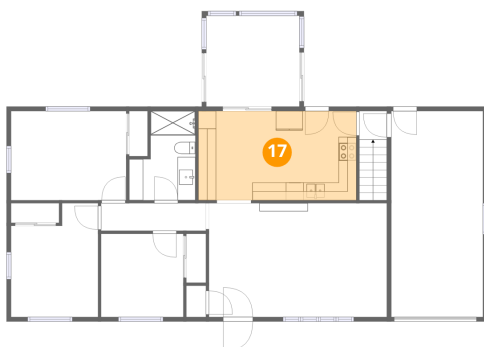
16 Floor 2 - Bedroom



Dimensions: 9'2" x 9'4"
Area: 86 sq. ft
Counted as living area: Yes

Heated: Yes
Finished: Yes
Enclosed: Yes
Contiguous: Yes
Permitted: Yes
Wet space: No
Addition: No
Conversion: No

17 Floor 2 - Kitchen



Dimensions: 17'8" x 10'0"
Area: 176 sq. ft
Counted as living area: Yes

Heated: Yes
Finished: Yes
Enclosed: Yes
Contiguous: Yes
Permitted: Yes
Wet space: No
Addition: No
Conversion: No