

Home data report

503 Kenilworth Avenue, Kenilworth, Cook County, Illinois, United States, 60043



Total Area: 4617 sq. ft

Basement 1: 577 sq. ft, 1st Floor: 266 sq. ft, 2nd Floor: 1899 sq. ft, 3rd Floor: 1875 sq. ft
Excluded: Utility 77 sq. ft, Storage 96 sq. ft, Open to below 511 sq. ft, Garage 411 sq. ft, Deck 429 sq. ft, Walls: 400 sq. ft

Property summary

 **4** Floors

 **5** Bedrooms

 **4** Bathrooms

Home data report

503 Kenilworth Avenue, Kenilworth, Cook County, Illinois, United States, 60043



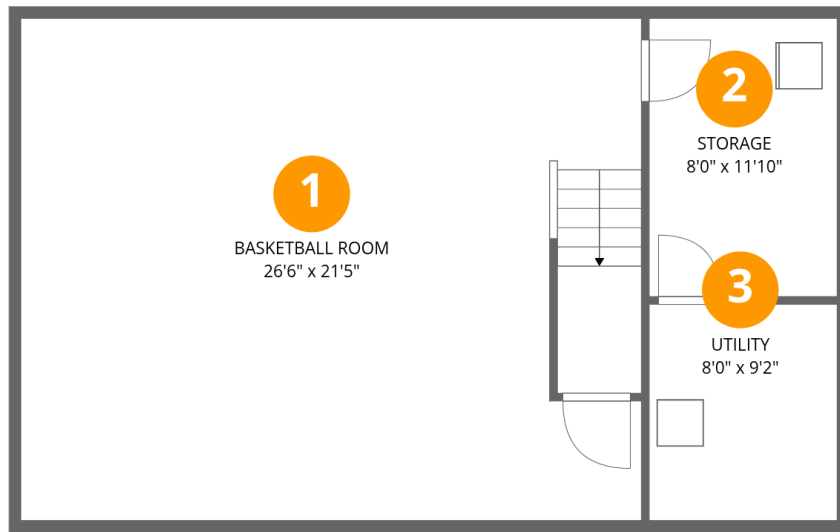
1
Half baths



1
Garages

Home data report

503 Kenilworth Avenue, Kenilworth, Cook County, Illinois, United States, 60043



Room dimensions

Floor 1 Below grade

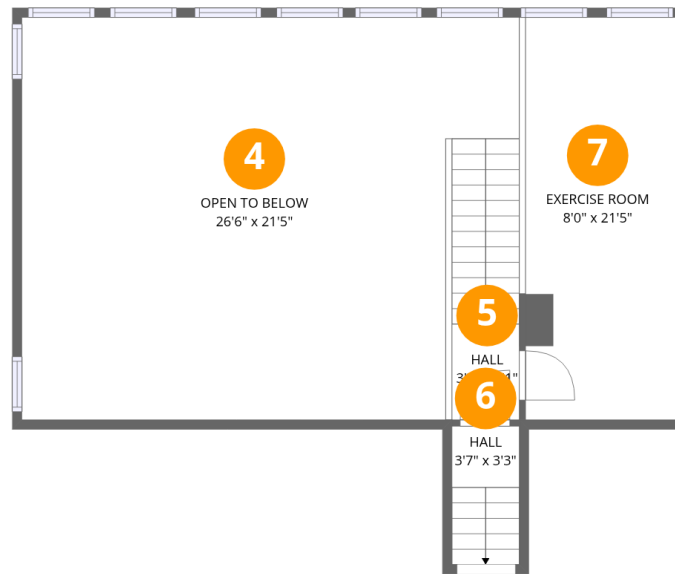
Total:577sqft

Excluded: 173sqft

#		Dimensions	sqft	Counted as living area
1	Basketball Room	26'6" x 21'5"	569 sq. ft	Yes
2	Storage	8'0" x 11'10"	95 sq. ft	No
3	Utility	8'0" x 9'2"	74 sq. ft	No

Home data report

503 Kenilworth Avenue, Kenilworth, Cook County, Illinois, United States, 60043



Room dimensions

Floor 2

Total:266sqft

Excluded: 511sqft

#		Dimensions	sqft	Counted as living area
4	Open To Below	26'6" x 21'5"	569 sq. ft	No
5	Hall	3'7" x 5'1"	18 sq. ft	Yes
6	Hall	3'7" x 3'3"	12 sq. ft	Yes
7	Exercise Room	8'0" x 21'5"	172 sq. ft	Yes

Home data report

503 Kenilworth Avenue, Kenilworth, Cook County, Illinois, United States, 60043



Room dimensions

Floor 3

Total:1899sqft Excluded: 411sqft

#		Dimensions	sqft	Counted as living area
8	Hall	10'7" x 7'1"	75 sq. ft	Yes
9	Pantry	5'0" x 6'4"	32 sq. ft	Yes
10	Bath	6'0" x 6'4"	38 sq. ft	Yes
11	Dining Area	9'6" x 19'2"	182 sq. ft	Yes
12	Kitchen	11'2" x 32'2"	360 sq. ft	Yes
13	Garage	26'0" x 19'5"	504 sq. ft	No
14	Bath	5'10" x 9'8"	57 sq. ft	Yes
15	Living Room	22'3" x 19'3"	428 sq. ft	Yes
16	Foyer	7'3" x 11'0"	79 sq. ft	Yes
17	Bedroom	11'2" x 14'3"	159 sq. ft	Yes
18	Hall	15'7" x 9'3"	145 sq. ft	Yes

Home data report

503 Kenilworth Avenue, Kenilworth, Cook County, Illinois, United States, 60043

#		Dimensions	sqft	Counted as living area
19	Hall	3'7" x 9'2"	33 sq. ft	Yes
20	Office	16'8" x 10'8"	177 sq. ft	Yes

Home data report

503 Kenilworth Avenue, Kenilworth, Cook County, Illinois, United States, 60043



Room dimensions

Floor 4

Total:1875sqft Excluded: 429sqft

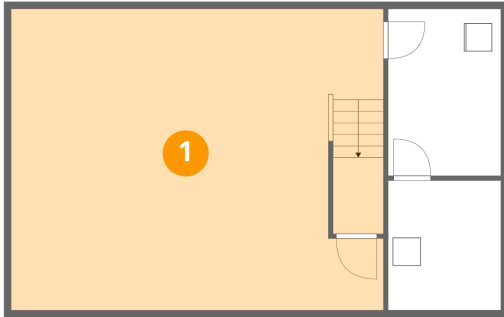
#		Dimensions	sqft	Counted as living area
21	Laundry	7'0" x 7'9"	55 sq. ft	Yes
22	Hall	19'2" x 4'0"	76 sq. ft	Yes
23	Bath	6'1" x 6'4"	38 sq. ft	Yes
24	Bedroom	12'0" x 13'1"	156 sq. ft	Yes
25	Bedroom	12'8" x 12'5"	157 sq. ft	Yes
26	Primary Bedroom	13'7" x 17'5"	237 sq. ft	Yes
27	Hall	7'1" x 4'0"	28 sq. ft	Yes
28	W.I.C.	5'6" x 5'3"	29 sq. ft	Yes
29	Primary Bath	12'11" x 12'5"	161 sq. ft	Yes
30	Bath	9'0" x 5'0"	45 sq. ft	Yes
31	Deck	18'2" x 21'9"	396 sq. ft	No

Home data report

503 Kenilworth Avenue, Kenilworth, Cook County, Illinois, United States, 60043

#		Dimensions	sqft	Counted as living area
32	Bath	5'1" x 3'6"	18 sq. ft	Yes
33	Bath	6'1" x 5'9"	35 sq. ft	Yes
34	Bedroom	13'2" x 12'5"	163 sq. ft	Yes
35	Family Room	18'3" x 21'5"	392 sq. ft	Yes
36	W.I.C.	10'8" x 13'1"	139 sq. ft	Yes

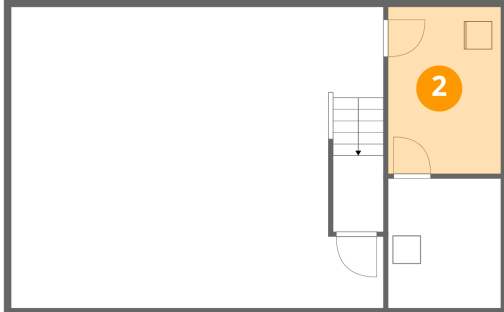
1 Floor 1 - Basketball Room



Dimensions: 26'6" x 21'5"
Area: 569 sq. ft
Counted as living area: Yes

Heated: Yes
Finished: Yes
Enclosed: Yes
Contiguous: Yes
Permitted: Yes
Wet space: No
Addition: No
Conversion: No

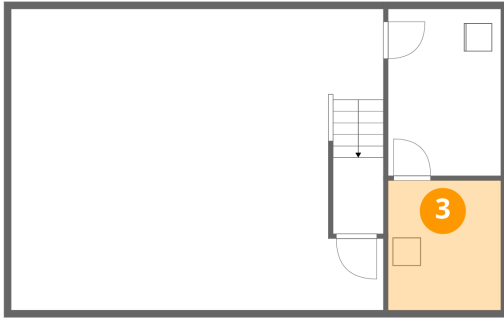
2 Floor 1 - Storage



Dimensions: 8'0" x 11'10"
Area: 95 sq. ft
Counted as living area: No

Heated: No
Finished: No
Enclosed: No
Contiguous: Yes
Permitted: Yes
Wet space: No
Addition: No
Conversion: No

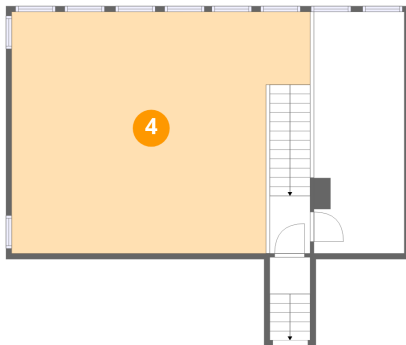
3 Floor 1 - Utility



Dimensions: 8'0" x 9'2"
Area: 74 sq. ft
Counted as living area: No

Heated: Yes
Finished: No
Enclosed: Yes
Contiguous: Yes
Permitted: Yes
Wet space: No
Addition: No
Conversion: No

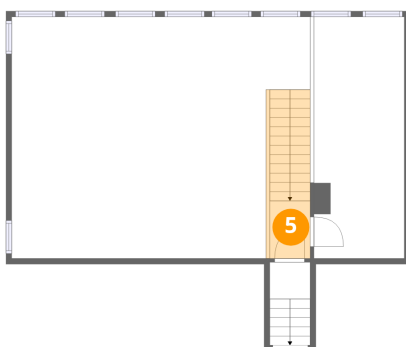
4 Floor 2 - Open To Below



Dimensions: 26'6" x 21'5"
Area: 569 sq. ft
Counted as living area: No

Heated: No
Finished: No
Enclosed: No
Contiguous: Yes
Permitted: No
Wet space: No
Addition: No
Conversion: No

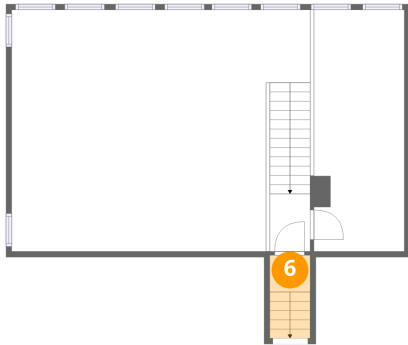
5 Floor 2 - Hall



Dimensions: 3'7" x 5'1"
Area: 18 sq. ft
Counted as living area: Yes

Heated: Yes
Finished: Yes
Enclosed: Yes
Contiguous: Yes
Permitted: Yes
Wet space: No
Addition: No
Conversion: No

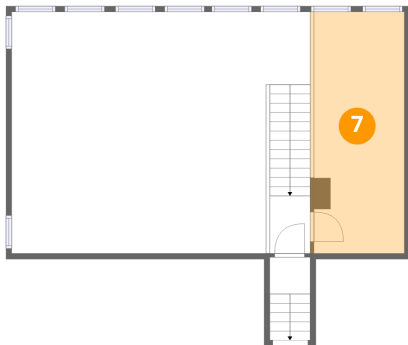
6 Floor 2 - Hall



Dimensions: 3'7" x 3'3"
Area: 12 sq. ft
Counted as living area: Yes

Heated: Yes
Finished: Yes
Enclosed: Yes
Contiguous: Yes
Permitted: Yes
Wet space: No
Addition: No
Conversion: No

7 Floor 2 - Exercise Room



Dimensions: 8'0" x 21'5"
Area: 172 sq. ft
Counted as living area: Yes

Heated: Yes
Finished: Yes
Enclosed: Yes
Contiguous: Yes
Permitted: Yes
Wet space: No
Addition: No
Conversion: No

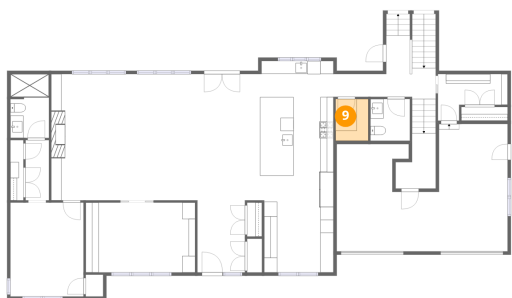
8 Floor 3 - Hall



Dimensions: 10'7" x 7'1"
Area: 75 sq. ft
Counted as living area: Yes

Heated: Yes
Finished: Yes
Enclosed: Yes
Contiguous: Yes
Permitted: Yes
Wet space: No
Addition: No
Conversion: No

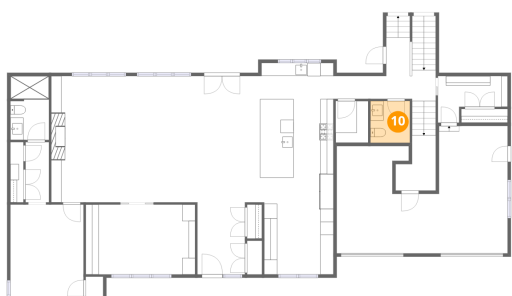
9 Floor 3 - Pantry



Dimensions: 5'0" x 6'4"
Area: 32 sq. ft
Counted as living area: Yes

Heated: Yes
Finished: Yes
Enclosed: Yes
Contiguous: Yes
Permitted: Yes
Wet space: No
Addition: No
Conversion: No

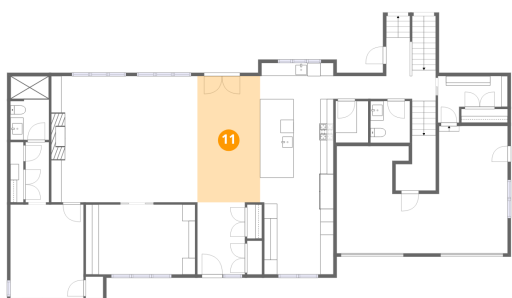
10 Floor 3 - Bath



Dimensions: 6'0" x 6'4"
Area: 38 sq. ft
Counted as living area: Yes

Heated: Yes
Finished: Yes
Enclosed: Yes
Contiguous: Yes
Permitted: Yes
Wet space: Yes
Addition: No
Conversion: No

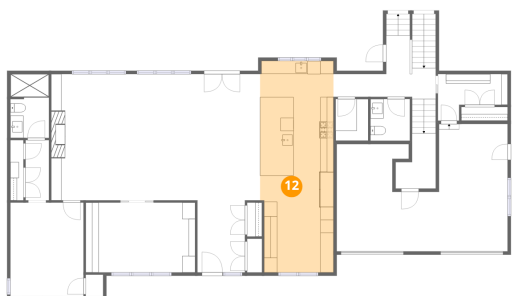
11 Floor 3 - Dining Area



Dimensions: 9'6" x 19'2"
Area: 182 sq. ft
Counted as living area: Yes

Heated: Yes
Finished: Yes
Enclosed: Yes
Contiguous: Yes
Permitted: Yes
Wet space: No
Addition: No
Conversion: No

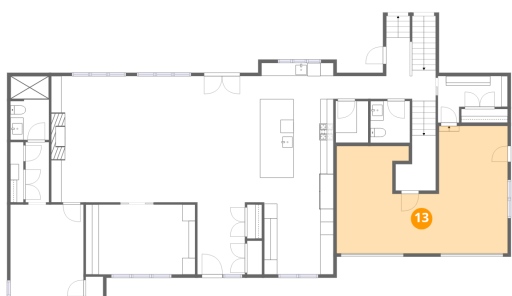
12 Floor 3 - Kitchen



Dimensions: 11'2" x 32'2"
Area: 360 sq. ft
Counted as living area: Yes

Heated: Yes
Finished: Yes
Enclosed: Yes
Contiguous: Yes
Permitted: Yes
Wet space: No
Addition: No
Conversion: No

13 Floor 3 - Garage



Dimensions: 26'0" x 19'5"
Area: 504 sq. ft
Counted as living area: No

Heated: No
Finished: No
Enclosed: Yes
Contiguous: Yes
Permitted: Yes
Wet space: No
Addition: No
Conversion: No

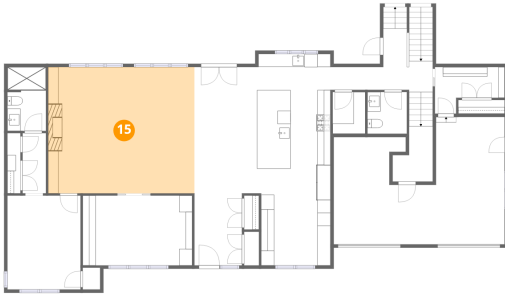
14 Floor 3 - Bath



Dimensions: 5'10" x 9'8"
Area: 57 sq. ft
Counted as living area: Yes

Heated: Yes
Finished: Yes
Enclosed: Yes
Contiguous: Yes
Permitted: Yes
Wet space: Yes
Addition: No
Conversion: No

15 Floor 3 - Living Room



Dimensions: 22'3" x 19'3"
Area: 428 sq. ft
Counted as living area: Yes

Heated: Yes
Finished: Yes
Enclosed: Yes
Contiguous: Yes
Permitted: Yes
Wet space: No
Addition: No
Conversion: No

16 Floor 3 - Foyer



Dimensions: 7'3" x 11'0"
Area: 79 sq. ft
Counted as living area: Yes

Heated: Yes
Finished: Yes
Enclosed: Yes
Contiguous: Yes
Permitted: Yes
Wet space: No
Addition: No
Conversion: No

17 Floor 3 - Bedroom



Dimensions: 11'2" x 14'3"
Area: 159 sq. ft
Counted as living area: Yes

Heated: Yes
Finished: Yes
Enclosed: Yes
Contiguous: Yes
Permitted: Yes
Wet space: No
Addition: No
Conversion: No

18 Floor 3 - Hall



Dimensions: 15'7" x 9'3"
Area: 145 sq. ft
Counted as living area: Yes

Heated: Yes
Finished: Yes
Enclosed: Yes
Contiguous: Yes
Permitted: Yes
Wet space: No
Addition: No
Conversion: No

19 Floor 3 - Hall



Dimensions: 3'7" x 9'2"
Area: 33 sq. ft
Counted as living area: Yes

Heated: Yes
Finished: Yes
Enclosed: Yes
Contiguous: Yes
Permitted: Yes
Wet space: No
Addition: No
Conversion: No

20 Floor 3 - Office



Dimensions: 16'8" x 10'8"
Area: 177 sq. ft
Counted as living area: Yes

Heated: Yes
Finished: Yes
Enclosed: Yes
Contiguous: Yes
Permitted: Yes
Wet space: No
Addition: No
Conversion: No

21 Floor 4 - Laundry



Dimensions: 7'0" x 7'9"
Area: 55 sq. ft
Counted as living area: Yes

Heated: Yes
Finished: Yes
Enclosed: Yes
Contiguous: Yes
Permitted: Yes
Wet space: No
Addition: No
Conversion: No

22 Floor 4 - Hall



Dimensions: 19'2" x 4'0"
Area: 76 sq. ft
Counted as living area: Yes

Heated: Yes
Finished: Yes
Enclosed: Yes
Contiguous: Yes
Permitted: Yes
Wet space: No
Addition: No
Conversion: No

23 Floor 4 - Bath



Dimensions: 6'1" x 6'4"
Area: 38 sq. ft
Counted as living area: Yes

Heated: Yes
Finished: Yes
Enclosed: Yes
Contiguous: Yes
Permitted: Yes
Wet space: Yes
Addition: No
Conversion: No

24 Floor 4 - Bedroom



Dimensions: 12'0" x 13'1"
Area: 156 sq. ft
Counted as living area: Yes

Heated: Yes
Finished: Yes
Enclosed: Yes
Contiguous: Yes
Permitted: Yes
Wet space: No
Addition: No
Conversion: No

25 Floor 4 - Bedroom



Dimensions: 12'8" x 12'5"
Area: 157 sq. ft
Counted as living area: Yes

Heated: Yes
Finished: Yes
Enclosed: Yes
Contiguous: Yes
Permitted: Yes
Wet space: No
Addition: No
Conversion: No

26 Floor 4 - Primary Bedroom



Dimensions: 13'7" x 17'5"
Area: 237 sq. ft
Counted as living area: Yes

Heated: Yes
Finished: Yes
Enclosed: Yes
Contiguous: Yes
Permitted: Yes
Wet space: No
Addition: No
Conversion: No

27 Floor 4 - Hall



Dimensions: 7'1" x 4'0"
Area: 28 sq. ft
Counted as living area: Yes

Heated: Yes
Finished: Yes
Enclosed: Yes
Contiguous: Yes
Permitted: Yes
Wet space: No
Addition: No
Conversion: No

28 Floor 4 - W.I.C.



Dimensions: 5'6" x 5'3"
Area: 29 sq. ft
Counted as living area: Yes

Heated: Yes
Finished: Yes
Enclosed: Yes
Contiguous: Yes
Permitted: Yes
Wet space: No
Addition: No
Conversion: No

29 Floor 4 - Primary Bath



Dimensions: 12'11" x 12'5"
Area: 161 sq. ft
Counted as living area: Yes

Heated: Yes
Finished: Yes
Enclosed: Yes
Contiguous: Yes
Permitted: Yes
Wet space: Yes
Addition: No
Conversion: No

30 Floor 4 - Bath



Dimensions: 9'0" x 5'0"
Area: 45 sq. ft
Counted as living area: Yes

Heated: Yes
Finished: Yes
Enclosed: Yes
Contiguous: Yes
Permitted: Yes
Wet space: Yes
Addition: No
Conversion: No

31 Floor 4 - Deck



Dimensions: 18'2" x 21'9"
Area: 396 sq. ft
Counted as living area: No

Heated: No
Finished: No
Enclosed: No
Contiguous: Yes
Permitted: Yes
Wet space: No
Addition: No
Conversion: No

32 Floor 4 - Bath



Dimensions: 5'1" x 3'6"
Area: 18 sq. ft
Counted as living area: Yes

Heated: Yes
Finished: Yes
Enclosed: Yes
Contiguous: Yes
Permitted: Yes
Wet space: Yes
Addition: No
Conversion: No

33 Floor 4 - Bath



Dimensions: 6'1" x 5'9"
Area: 35 sq. ft
Counted as living area: Yes

Heated: Yes
Finished: Yes
Enclosed: Yes
Contiguous: Yes
Permitted: Yes
Wet space: Yes
Addition: No
Conversion: No

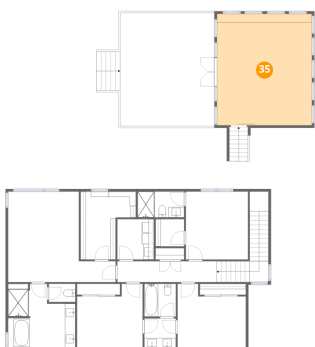
34 Floor 4 - Bedroom



Dimensions: 13'2" x 12'5"
Area: 163 sq. ft
Counted as living area: Yes

Heated: Yes
Finished: Yes
Enclosed: Yes
Contiguous: Yes
Permitted: Yes
Wet space: No
Addition: No
Conversion: No

35 Floor 4 - Family Room



Dimensions: 18'3" x 21'5"
Area: 392 sq. ft
Counted as living area: Yes

Heated: Yes
Finished: Yes
Enclosed: Yes
Contiguous: Yes
Permitted: Yes
Wet space: No
Addition: No
Conversion: No

503 Kenilworth Avenue, Kenilworth, Cook County, Illinois, United States, 60043

36 Floor 4 - W.I.C.



Dimensions: 10'8" x 13'1"
Area: 139 sq. ft
Counted as living area: Yes

Heated: Yes
Finished: Yes
Enclosed: Yes
Contiguous: Yes
Permitted: Yes
Wet space: No
Addition: No
Conversion: No