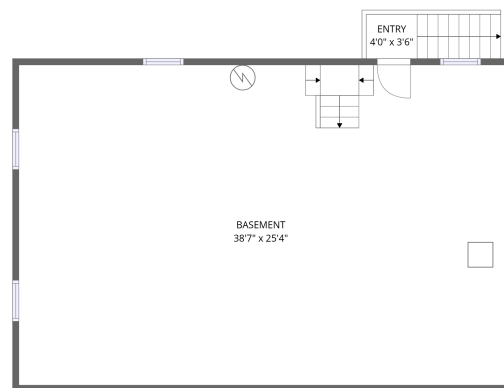
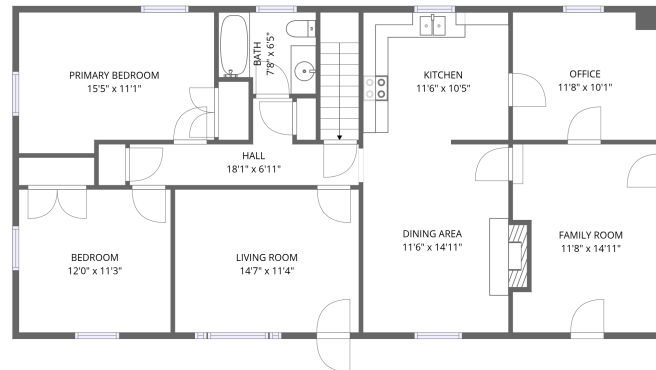


Home data report

1366 Ashpone Tavern Rd, Rocky Mount, Virginia, United States

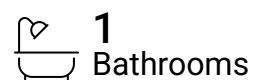
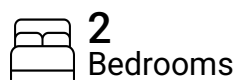


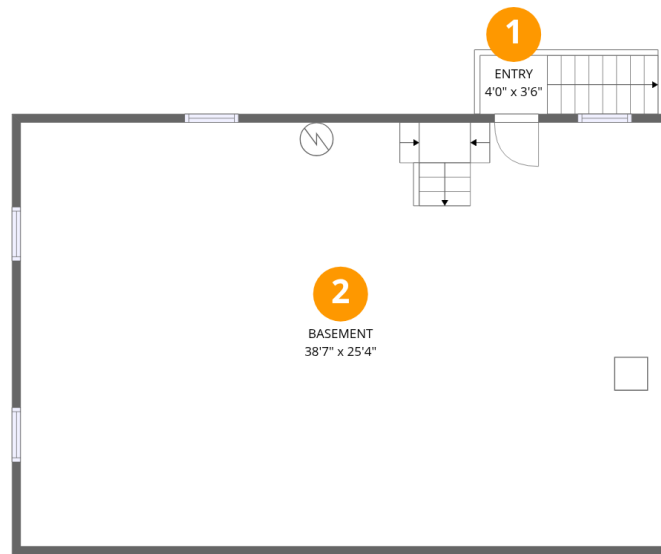
Total Area: 1321 sq. ft

Basement: 37 sq. ft, 1st Floor: 1284 sq. ft

Excluded: Basement 976 sq. ft, Walls: 142 sq. ft

Property summary





Room dimensions

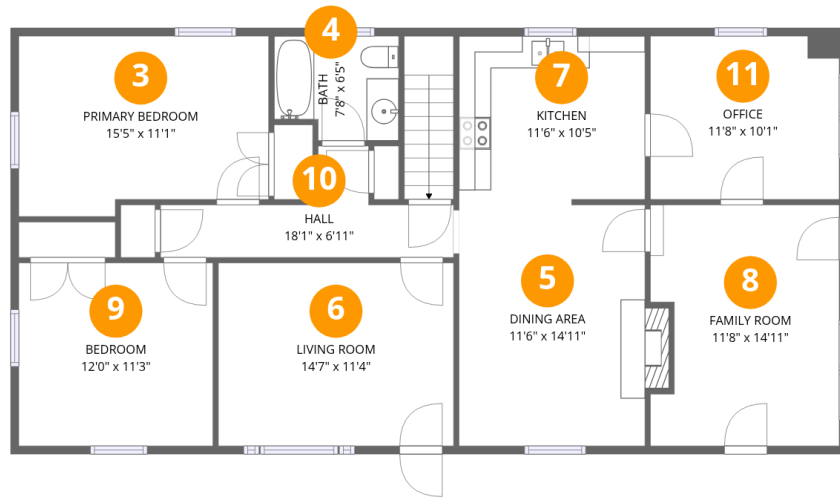
Floor 1 Below grade

Total:37sqft

Excluded: 976sqft

#		Dimensions	sqft	Counted as living area
1	Entry	4'0" x 3'6"	37 sq. ft	Yes
2	Basement	38'7" x 25'4"	976 sq. ft	No

1366 Ashpone Tavern Rd, Rocky Mount, Virginia, United States



Room dimensions

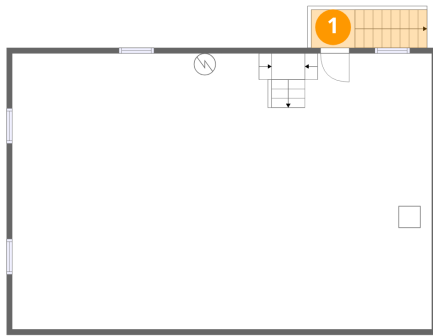
Floor 2

Total: 1284 sqft

Excluded: 0 sqft

#		Dimensions	sqft	Counted as living area
3	Primary Bedroom	15'5" x 11'1"	162 sq. ft	Yes
4	Bath	7'8" x 6'5"	46 sq. ft	Yes
5	Dining Area	11'6" x 14'11"	179 sq. ft	Yes
6	Living Room	14'7" x 11'4"	164 sq. ft	Yes
7	Kitchen	11'6" x 10'5"	118 sq. ft	Yes
8	Family Room	11'8" x 14'11"	165 sq. ft	Yes
9	Bedroom	12'0" x 11'3"	136 sq. ft	Yes
10	Hall	18'1" x 6'11"	70 sq. ft	Yes
11	Office	11'8" x 10'1"	118 sq. ft	Yes

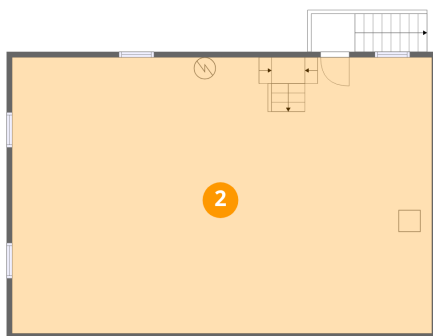
1 Floor 1 - Entry



Dimensions: 4'0" x 3'6"
Area: 37 sq. ft
Counted as living area: Yes

Heated: Yes
Finished: Yes
Enclosed: Yes
Contiguous: Yes
Permitted: Yes
Wet space: No
Addition: No
Conversion: No

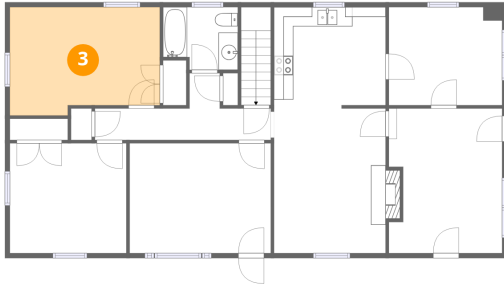
2 Floor 1 - Basement



Dimensions: 38'7" x 25'4"
Area: 976 sq. ft
Counted as living area: No

Heated: Yes
Finished: No
Enclosed: Yes
Contiguous: Yes
Permitted: Yes
Wet space: No
Addition: No
Conversion: No

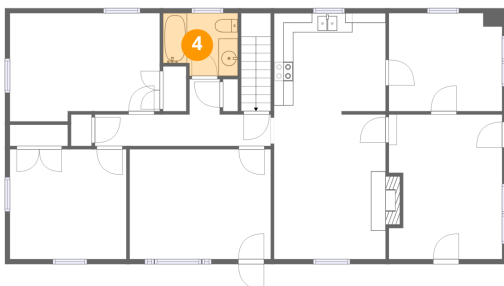
3 Floor 2 - Primary Bedroom



Dimensions: 15'5" x 11'1"
Area: 162 sq. ft
Counted as living area: Yes

Heated: Yes
Finished: Yes
Enclosed: Yes
Contiguous: Yes
Permitted: Yes
Wet space: No
Addition: No
Conversion: No

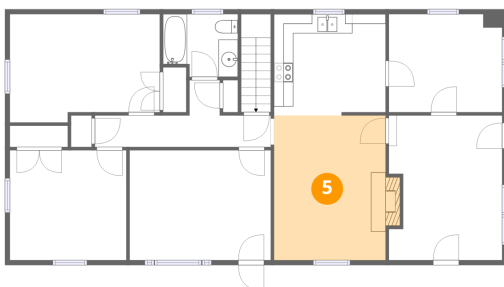
4 Floor 2 - Bath



Dimensions: 7'8" x 6'5"
Area: 46 sq. ft
Counted as living area: Yes

Heated: Yes
Finished: Yes
Enclosed: Yes
Contiguous: Yes
Permitted: Yes
Wet space: Yes
Addition: No
Conversion: No

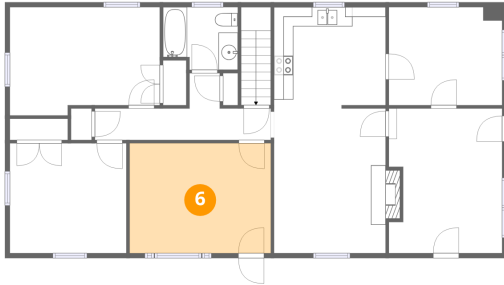
5 Floor 2 - Dining Area



Dimensions: 11'6" x 14'11"
Area: 179 sq. ft
Counted as living area: Yes

Heated: Yes
Finished: Yes
Enclosed: Yes
Contiguous: Yes
Permitted: Yes
Wet space: No
Addition: No
Conversion: No

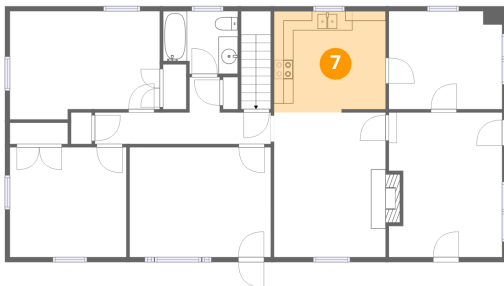
6 Floor 2 - Living Room



Dimensions: 14'7" x 11'4"
Area: 164 sq. ft
Counted as living area: Yes

Heated: Yes
Finished: Yes
Enclosed: Yes
Contiguous: Yes
Permitted: Yes
Wet space: No
Addition: No
Conversion: No

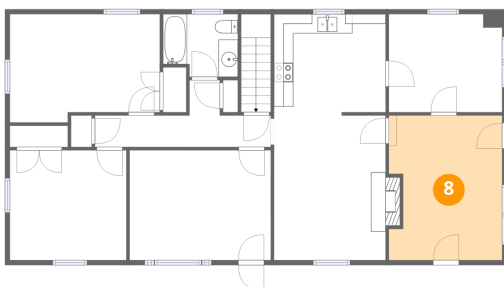
7 Floor 2 - Kitchen



Dimensions: 11'6" x 10'5"
Area: 118 sq. ft
Counted as living area: Yes

Heated: Yes
Finished: Yes
Enclosed: Yes
Contiguous: Yes
Permitted: Yes
Wet space: No
Addition: No
Conversion: No

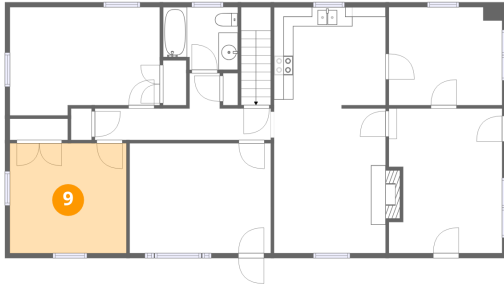
8 Floor 2 - Family Room



Dimensions: 11'8" x 14'11"
Area: 165 sq. ft
Counted as living area: Yes

Heated: Yes
Finished: Yes
Enclosed: Yes
Contiguous: Yes
Permitted: Yes
Wet space: No
Addition: No
Conversion: No

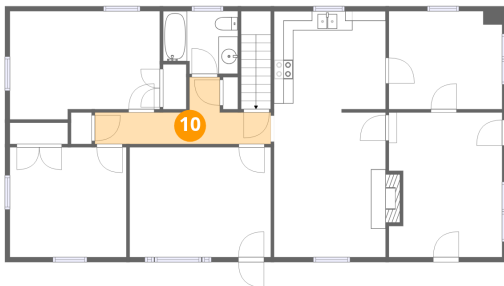
9 Floor 2 - Bedroom



Dimensions: 12'0" x 11'3"
Area: 136 sq. ft
Counted as living area: Yes

Heated: Yes
Finished: Yes
Enclosed: Yes
Contiguous: Yes
Permitted: Yes
Wet space: No
Addition: No
Conversion: No

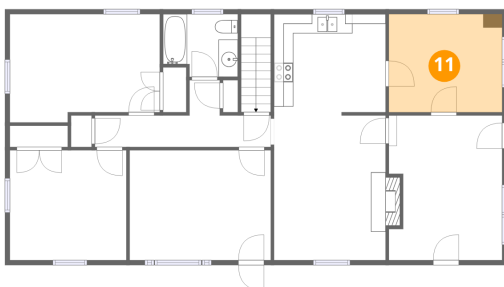
10 Floor 2 - Hall



Dimensions: 18'1" x 6'11"
Area: 70 sq. ft
Counted as living area: Yes

Heated: Yes
Finished: Yes
Enclosed: Yes
Contiguous: Yes
Permitted: Yes
Wet space: No
Addition: No
Conversion: No

11 Floor 2 - Office



Dimensions: 11'8" x 10'1"
Area: 118 sq. ft
Counted as living area: Yes

Heated: Yes
Finished: Yes
Enclosed: Yes
Contiguous: Yes
Permitted: Yes
Wet space: No
Addition: No
Conversion: No