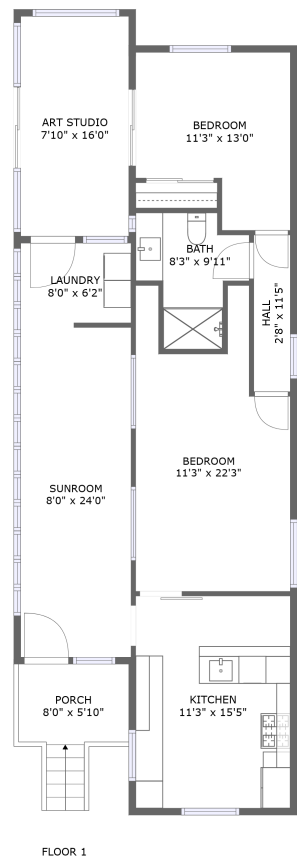


Home report

Durango Drive, Arroyo Grande, San Luis Obispo County,  
California, United States, 93420, 765 mesa view drive space 172



**Total Area: 871 sq. ft**

Floor 1: 871 sq. ft

Excluded: Art studio 126 sq. ft, Porch 59 sq. ft, Walls: 89 sq. ft

Property summary

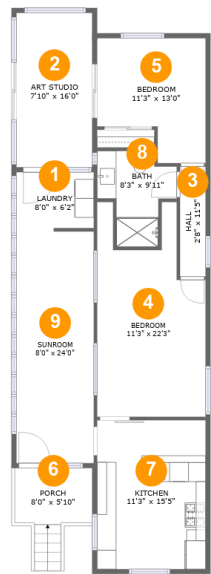
 **1** Floors

 **2** Bedrooms

 **1** Bathrooms

Home report

Durango Drive, Arroyo Grande, San Luis Obispo County,  
California, United States, 93420, 765 mesa view drive space 172



Room dimensions

Floor 1 Total:871sqft    Excluded: 185sqft

#		Max Dimensions	sqft	Included
1	Laundry	8'0" x 6'2"	48 sq. ft	Yes
2	Art Studio	7'10" x 16'0"	126 sq. ft	No
3	Hall	2'8" x 11'5"	30 sq. ft	Yes
4	Bedroom	11'3" x 22'3"	201 sq. ft	Yes
5	Bedroom	11'3" x 13'0"	122 sq. ft	Yes
6	Porch	8'0" x 5'10"	59 sq. ft	No
7	Kitchen	11'3" x 15'5"	174 sq. ft	Yes
8	Bath	8'3" x 9'11"	59 sq. ft	Yes
9	Sunroom	8'0" x 24'0"	193 sq. ft	Yes

Durango Drive, Arroyo Grande, San Luis Obispo County,  
California, United States, 93420, 765 mesa view drive space 172

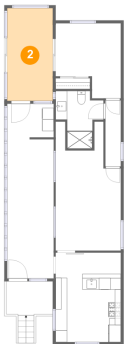
1 Floor 1 - Laundry



Max Dimensions: 8'0" x 6'2"  
Calculated Area: 48 sq. ft  
Included: Yes

Heated: Yes  
Finished: Yes  
Enclosed: Yes  
Contiguous: Yes  
Permitted: Yes  
Wet space: No  
Addition: No  
Conversion: No

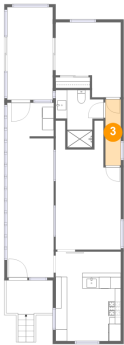
2 Floor 1 - Art Studio



Max Dimensions: 7'10" x 16'0"  
Calculated Area: 126 sq. ft  
Included: No

Heated: No  
Finished: Yes  
Enclosed: No  
Contiguous: Yes  
Permitted: Yes  
Wet space: No  
Addition: No  
Conversion: No

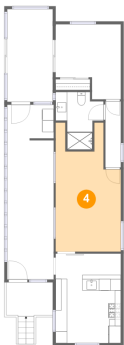
3 Floor 1 - Hall



Max Dimensions: 2'8" x 11'5"  
Calculated Area: 30 sq. ft  
Included: Yes

Heated: Yes  
Finished: Yes  
Enclosed: Yes  
Contiguous: Yes  
Permitted: Yes  
Wet space: No  
Addition: No  
Conversion: No

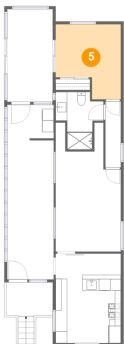
4 Floor 1 - Bedroom



Max Dimensions: 11'3" x 22'3"  
Calculated Area: 201 sq. ft  
Included: Yes

Heated: Yes  
Finished: Yes  
Enclosed: Yes  
Contiguous: Yes  
Permitted: Yes  
Wet space: No  
Addition: No  
Conversion: No

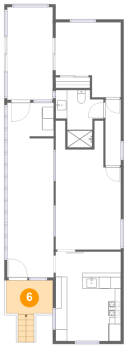
5 Floor 1 - Bedroom



Max Dimensions: 11'3" x 13'0"  
Calculated Area: 122 sq. ft  
Included: Yes

Heated: Yes  
Finished: Yes  
Enclosed: Yes  
Contiguous: Yes  
Permitted: Yes  
Wet space: No  
Addition: No  
Conversion: No

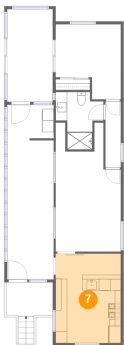
6 Floor 1 - Porch



Max Dimensions: 8'0" x 5'10"  
Calculated Area: 59 sq. ft  
Included: No

Heated: No  
Finished: Yes  
Enclosed: No  
Contiguous: Yes  
Permitted: Yes  
Wet space: No  
Addition: No  
Conversion: No

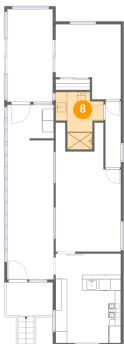
7 Floor 1 - Kitchen



Max Dimensions: 11'3" x 15'5"  
Calculated Area: 174 sq. ft  
Included: Yes

Heated: Yes  
Finished: Yes  
Enclosed: Yes  
Contiguous: Yes  
Permitted: Yes  
Wet space: No  
Addition: No  
Conversion: No

8 Floor 1 - Bath

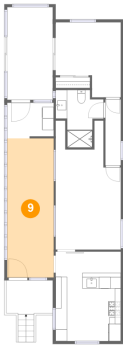


Max Dimensions: 8'3" x 9'11"  
Calculated Area: 59 sq. ft  
Included: Yes

Heated: Yes  
Finished: Yes  
Enclosed: Yes  
Contiguous: Yes  
Permitted: Yes  
Wet space: Yes  
Addition: No  
Conversion: No

Durango Drive, Arroyo Grande, San Luis Obispo County,  
California, United States, 93420, 765 mesa view drive space 172

9 Floor 1 - Sunroom



Max Dimensions: 8'0" x 24'0"  
Calculated Area: 193 sq. ft  
Included: Yes

Heated: Yes  
Finished: Yes  
Enclosed: Yes  
Contiguous: Yes  
Permitted: Yes  
Wet space: No  
Addition: No  
Conversion: No