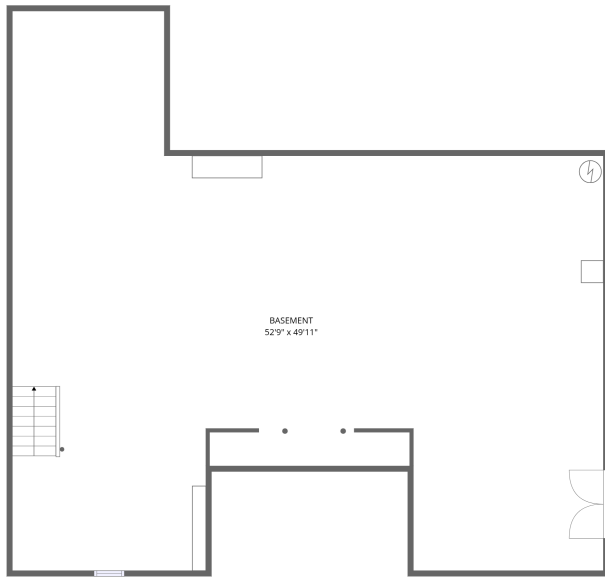


Home data report

16335 Back Rd, Strasburg, VA, US



Basement



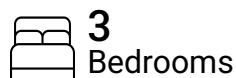
1st floor

Total Area: 1977 sq. ft

Basement: 0 sq. ft, 1st Floor: 1977 sq. ft

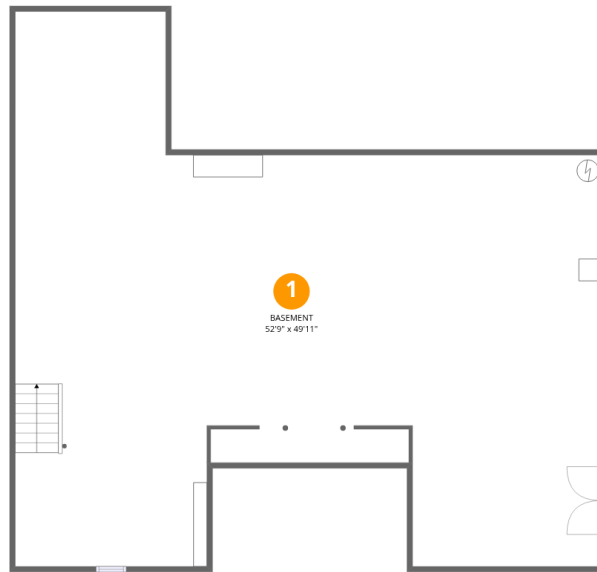
Excluded: Basement 1953 sq. ft, Porch 97 sq. ft, Deck 288 sq. ft, Walls: 231 sq. ft

Property summary



Home data report

16335 Back Rd, Strasburg, VA, US



Room dimensions

Floor 1 Below grade

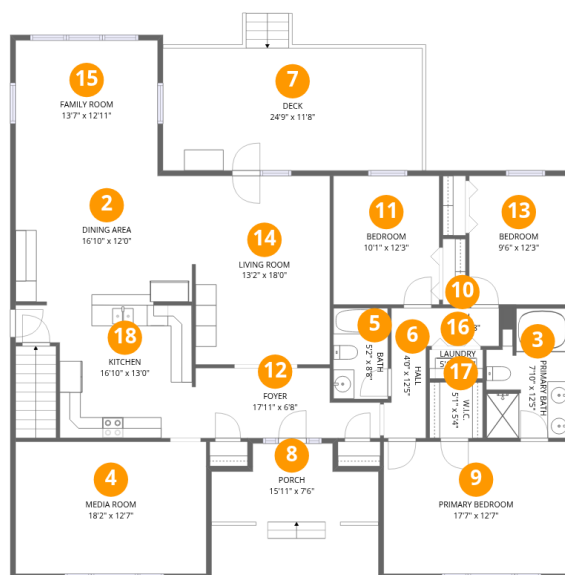
Total: 0sqft

Excluded: 1953sqft

#		Dimensions	sqft	Counted as living area
1	Basement	52'9" x 49'11"	1948 sq. ft	No

Home data report

16335 Back Rd, Strasburg, VA, US



Room dimensions

Floor 2

Total:1977sqft Excluded: 385sqft

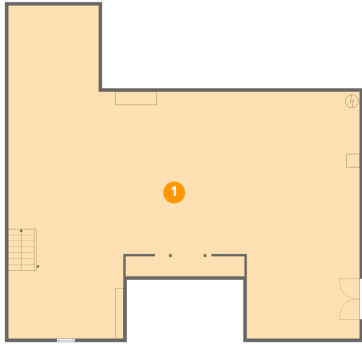
#		Dimensions	sqft	Counted as living area
2	Dining Area	16'10" x 12'0"	202 sq. ft	Yes
3	Primary Bath	7'10" x 12'5"	88 sq. ft	Yes
4	Media Room	18'2" x 12'7"	229 sq. ft	Yes
5	Bath	5'2" x 8'8"	45 sq. ft	Yes
6	Hall	4'0" x 12'5"	43 sq. ft	Yes
7	Deck	24'9" x 11'8"	288 sq. ft	No
8	Porch	15'11" x 7'6"	97 sq. ft	No
9	Primary Bedroom	17'7" x 12'7"	222 sq. ft	Yes
10	Hall	7'0" x 3'8"	25 sq. ft	Yes
11	Bedroom	10'1" x 12'3"	124 sq. ft	Yes
12	Foyer	17'11" x 6'8"	103 sq. ft	Yes

Home data report

16335 Back Rd, Strasburg, VA, US

#		Dimensions	sqft	Counted as living area
13	Bedroom	9'6" x 12'3"	116 sq. ft	Yes
14	Living Room	13'2" x 18'0"	233 sq. ft	Yes
15	Family Room	13'7" x 12'11"	175 sq. ft	Yes
16	Laundry	5'1" x 2'9"	14 sq. ft	Yes
17	W.I.C.	5'1" x 5'4"	27 sq. ft	Yes
18	Kitchen	16'10" x 13'0"	178 sq. ft	Yes

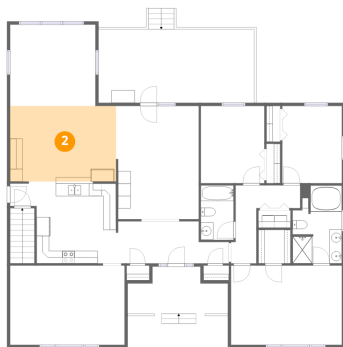
1 Floor 1 - Basement



Dimensions: 52'9" x 49'11"
Area: 1948 sq. ft
Counted as living area: No

Heated: Yes
Finished: No
Enclosed: Yes
Contiguous: Yes
Permitted: Yes
Wet space: No
Addition: No
Conversion: No

2 Floor 2 - Dining Area



Dimensions: 16'10" x 12'0"
Area: 202 sq. ft
Counted as living area: Yes

Heated: Yes
Finished: Yes
Enclosed: Yes
Contiguous: Yes
Permitted: Yes
Wet space: No
Addition: No
Conversion: No

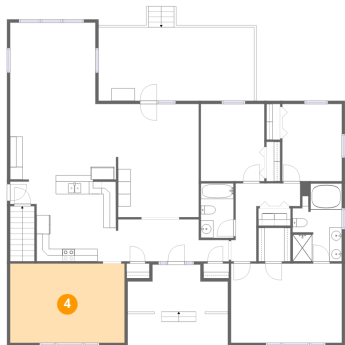
3 Floor 2 - Primary Bath



Dimensions: 7'10" x 12'5"
Area: 88 sq. ft
Counted as living area: Yes

Heated: Yes
Finished: Yes
Enclosed: Yes
Contiguous: Yes
Permitted: Yes
Wet space: Yes
Addition: No
Conversion: No

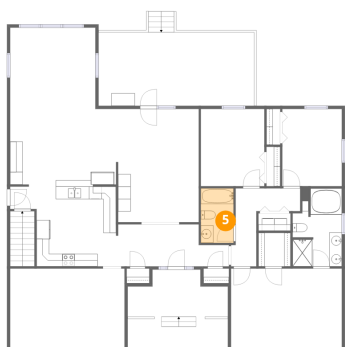
4 Floor 2 - Media Room



Dimensions: 18'2" x 12'7"
Area: 229 sq. ft
Counted as living area: Yes

Heated: Yes
Finished: Yes
Enclosed: Yes
Contiguous: Yes
Permitted: Yes
Wet space: No
Addition: No
Conversion: No

5 Floor 2 - Bath



Dimensions: 5'2" x 8'8"
Area: 45 sq. ft
Counted as living area: Yes

Heated: Yes
Finished: Yes
Enclosed: Yes
Contiguous: Yes
Permitted: Yes
Wet space: Yes
Addition: No
Conversion: No

6 Floor 2 - Hall



Dimensions: 4'0" x 12'5"
Area: 43 sq. ft
Counted as living area: Yes

Heated: Yes
Finished: Yes
Enclosed: Yes
Contiguous: Yes
Permitted: Yes
Wet space: No
Addition: No
Conversion: No

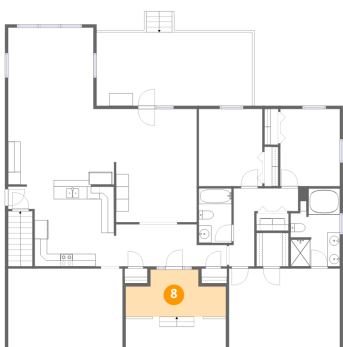
7 Floor 2 - Deck



Dimensions: 24'9" x 11'8"
Area: 288 sq. ft
Counted as living area: No

Heated: No
Finished: No
Enclosed: No
Contiguous: Yes
Permitted: Yes
Wet space: No
Addition: No
Conversion: No

8 Floor 2 - Porch



Dimensions: 15'11" x 7'6"
Area: 97 sq. ft
Counted as living area: No

Heated: No
Finished: No
Enclosed: No
Contiguous: Yes
Permitted: Yes
Wet space: No
Addition: No
Conversion: No

9 Floor 2 - Primary Bedroom



Dimensions: 17'7" x 12'7"
Area: 222 sq. ft
Counted as living area: Yes

Heated: Yes
Finished: Yes
Enclosed: Yes
Contiguous: Yes
Permitted: Yes
Wet space: No
Addition: No
Conversion: No

10 Floor 2 - Hall



Dimensions: 7'0" x 3'8"
Area: 25 sq. ft
Counted as living area: Yes

Heated: Yes
Finished: Yes
Enclosed: Yes
Contiguous: Yes
Permitted: Yes
Wet space: No
Addition: No
Conversion: No

11 Floor 2 - Bedroom



Dimensions: 10'1" x 12'3"
Area: 124 sq. ft
Counted as living area: Yes

Heated: Yes
Finished: Yes
Enclosed: Yes
Contiguous: Yes
Permitted: Yes
Wet space: No
Addition: No
Conversion: No

12 Floor 2 - Foyer



Dimensions: 17'11" x 6'8"
Area: 103 sq. ft
Counted as living area: Yes

Heated: Yes
Finished: Yes
Enclosed: Yes
Contiguous: Yes
Permitted: Yes
Wet space: No
Addition: No
Conversion: No

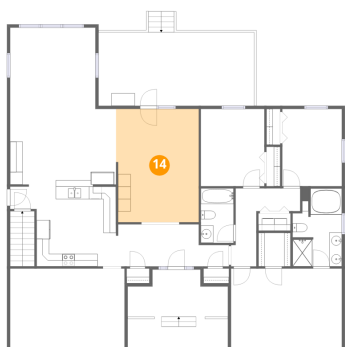
13 Floor 2 - Bedroom



Dimensions: 9'6" x 12'3"
Area: 116 sq. ft
Counted as living area: Yes

Heated: Yes
Finished: Yes
Enclosed: Yes
Contiguous: Yes
Permitted: Yes
Wet space: No
Addition: No
Conversion: No

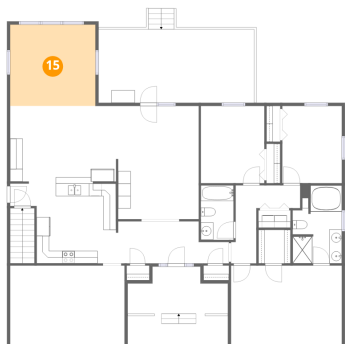
14 Floor 2 - Living Room



Dimensions: 13'2" x 18'0"
Area: 233 sq. ft
Counted as living area: Yes

Heated: Yes
Finished: Yes
Enclosed: Yes
Contiguous: Yes
Permitted: Yes
Wet space: No
Addition: No
Conversion: No

15 Floor 2 - Family Room



Dimensions: 13'7" x 12'11"
Area: 175 sq. ft
Counted as living area: Yes

Heated: Yes
Finished: Yes
Enclosed: Yes
Contiguous: Yes
Permitted: Yes
Wet space: No
Addition: No
Conversion: No

16 Floor 2 - Laundry



Dimensions: 5'1" x 2'9"
Area: 14 sq. ft
Counted as living area: Yes

Heated: Yes
Finished: Yes
Enclosed: Yes
Contiguous: Yes
Permitted: Yes
Wet space: No
Addition: No
Conversion: No

17 Floor 2 - W.I.C.



Dimensions: 5'1" x 5'4"
Area: 27 sq. ft
Counted as living area: Yes

Heated: Yes
Finished: Yes
Enclosed: Yes
Contiguous: Yes
Permitted: Yes
Wet space: No
Addition: No
Conversion: No

18 Floor 2 - Kitchen



Dimensions: 16'10" x 13'0"
Area: 178 sq. ft
Counted as living area: Yes

Heated: Yes
Finished: Yes
Enclosed: Yes
Contiguous: Yes
Permitted: Yes
Wet space: No
Addition: No
Conversion: No