

Home data report

112 Two Feather, Whitney, Hill County, Texas, United States, 76692



Total Area: 2414 sq. ft

1st Floor: 1428 sq. ft, 2nd Floor: 986 sq. ft

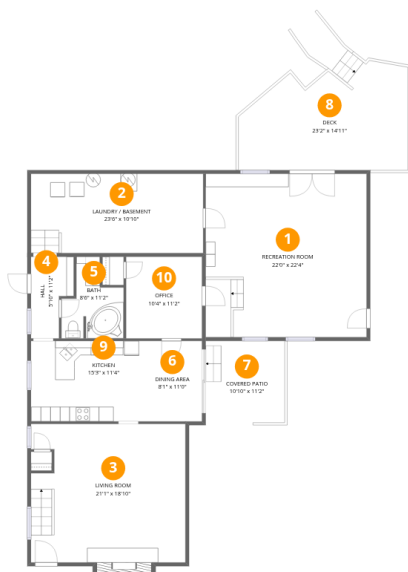
Excluded: Laundry / basement 254 sq. ft, Deck 326 sq. ft, Covered patio 120 sq. ft, Fireplace 12 sq. ft, Open to below 209 sq. ft, Walls: 190 sq. ft

Property summary



Home data report

112 Two Feather, Whitney, Hill County, Texas, United States, 76692



Room dimensions

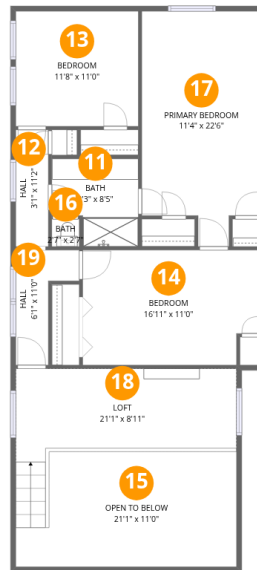
Floor 1

Total:1428sqft Excluded: 712sqft

#		Dimensions	sqft	Counted as living area
1	Recreation Room	22'0" x 22'4"	490 sq. ft	Yes
2	Laundry / Basement	23'6" x 10'10"	254 sq. ft	No
3	Living Room	21'1" x 18'10"	398 sq. ft	Yes
4	Hall	5'10" x 11'2"	65 sq. ft	Yes
5	Bath	8'6" x 11'2"	95 sq. ft	Yes
6	Dining Area	8'1" x 11'0"	89 sq. ft	Yes
7	Covered Patio	10'10" x 11'2"	120 sq. ft	No
8	Deck	23'2" x 14'11"	345 sq. ft	No
9	Kitchen	15'3" x 11'4"	173 sq. ft	Yes
10	Office	10'4" x 11'2"	116 sq. ft	Yes

Home data report

112 Two Feather, Whitney, Hill County, Texas, United States, 76692



Room dimensions

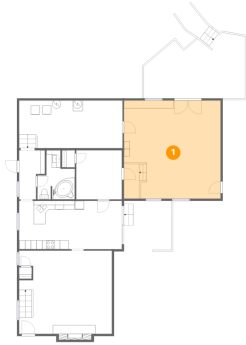
Floor 2

Total:986sqft

Excluded: 209sqft

#		Dimensions	sqft	Counted as living area
11	Bath	8'3" x 8'5"	69 sq. ft	Yes
12	Hall	3'1" x 11'2"	35 sq. ft	Yes
13	Bedroom	11'8" x 11'0"	129 sq. ft	Yes
14	Bedroom	16'11" x 11'0"	186 sq. ft	Yes
15	Open To Below	21'1" x 11'0"	232 sq. ft	No
16	Bath	2'7" x 2'7"	7 sq. ft	Yes
17	Primary Bedroom	11'4" x 22'6"	254 sq. ft	Yes
18	Loft	21'1" x 8'11"	188 sq. ft	Yes
19	Hall	6'1" x 11'0"	67 sq. ft	Yes

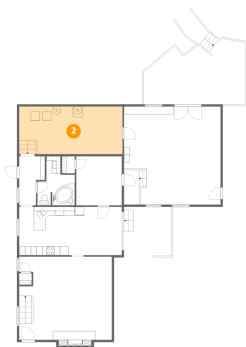
1 Floor 1 - Recreation Room



Dimensions: 22'0" x 22'4"
Area: 490 sq. ft
Counted as living area: No

Heated: Yes
Finished: Yes
Enclosed: Yes
Contiguous: No
Permitted: Yes
Wet space: No
Addition: No
Conversion: No

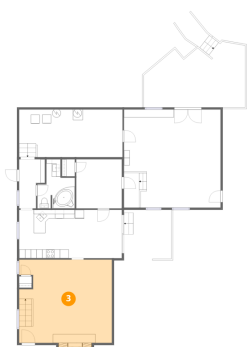
2 Floor 1 - Laundry / Basement



Dimensions: 23'6" x 10'10"
Area: 254 sq. ft
Counted as living area: No

Heated: Yes
Finished: No
Enclosed: Yes
Contiguous: Yes
Permitted: Yes
Wet space: No
Addition: No
Conversion: No

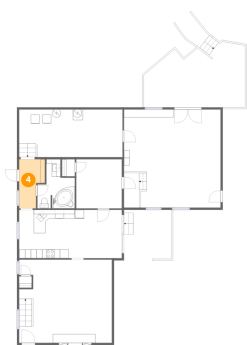
3 Floor 1 - Living Room



Dimensions: 21'1" x 18'10"
Area: 398 sq. ft
Counted as living area: Yes

Heated: Yes
Finished: Yes
Enclosed: Yes
Contiguous: Yes
Permitted: Yes
Wet space: No
Addition: No
Conversion: No

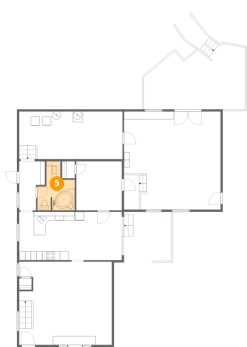
4 Floor 1 - Hall



Dimensions: 5'10" x 11'2"
Area: 65 sq. ft
Counted as living area: Yes

Heated: Yes
Finished: Yes
Enclosed: Yes
Contiguous: Yes
Permitted: Yes
Wet space: No
Addition: No
Conversion: No

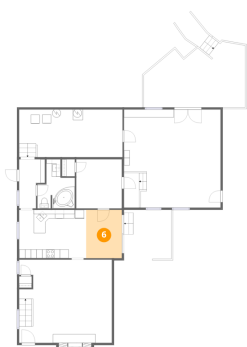
5 Floor 1 - Bath



Dimensions: 8'6" x 11'2"
Area: 95 sq. ft
Counted as living area: Yes

Heated: Yes
Finished: Yes
Enclosed: Yes
Contiguous: Yes
Permitted: Yes
Wet space: Yes
Addition: No
Conversion: No

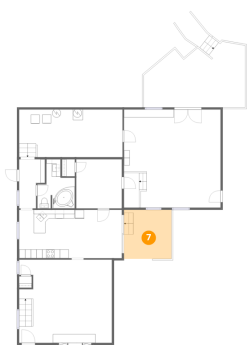
6 Floor 1 - Dining Area



Dimensions: 8'1" x 11'0"
Area: 89 sq. ft
Counted as living area: Yes

Heated: Yes
Finished: Yes
Enclosed: Yes
Contiguous: Yes
Permitted: Yes
Wet space: No
Addition: No
Conversion: No

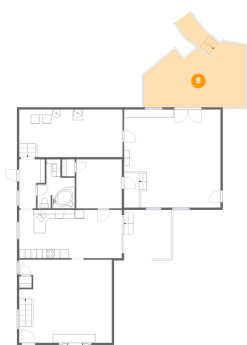
7 Floor 1 - Covered Patio



Dimensions: 10'10" x 11'2"
Area: 120 sq. ft
Counted as living area: No

Heated: No
Finished: No
Enclosed: No
Contiguous: Yes
Permitted: Yes
Wet space: No
Addition: No
Conversion: No

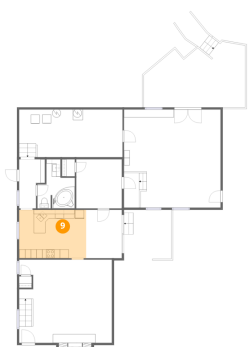
8 Floor 1 - Deck



Dimensions: 23'2" x 14'11"
Area: 345 sq. ft
Counted as living area: No

Heated: No
Finished: No
Enclosed: No
Contiguous: Yes
Permitted: Yes
Wet space: No
Addition: No
Conversion: No

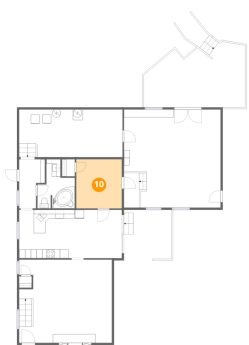
9 Floor 1 - Kitchen



Dimensions: 15'3" x 11'4"
Area: 173 sq. ft
Counted as living area: Yes

Heated: Yes
Finished: Yes
Enclosed: Yes
Contiguous: Yes
Permitted: Yes
Wet space: No
Addition: No
Conversion: No

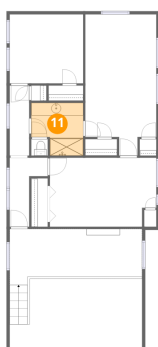
10 Floor 1 - Office



Dimensions: 10'4" x 11'2"
Area: 116 sq. ft
Counted as living area: Yes

Heated: Yes
Finished: Yes
Enclosed: Yes
Contiguous: Yes
Permitted: Yes
Wet space: No
Addition: No
Conversion: No

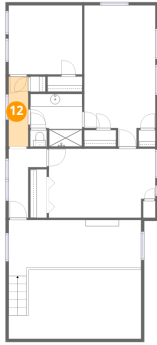
11 Floor 2 - Bath



Dimensions: 8'3" x 8'5"
Area: 69 sq. ft
Counted as living area: Yes

Heated: Yes
Finished: Yes
Enclosed: Yes
Contiguous: Yes
Permitted: Yes
Wet space: Yes
Addition: No
Conversion: No

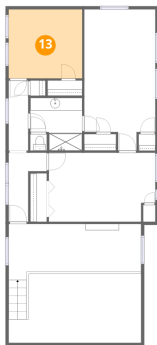
12 Floor 2 - Hall



Dimensions: 3'1" x 11'2"
Area: 35 sq. ft
Counted as living area: Yes

Heated: Yes
Finished: Yes
Enclosed: Yes
Contiguous: Yes
Permitted: Yes
Wet space: No
Addition: No
Conversion: No

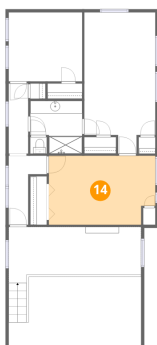
13 Floor 2 - Bedroom



Dimensions: 11'8" x 11'0"
Area: 129 sq. ft
Counted as living area: Yes

Heated: Yes
Finished: Yes
Enclosed: Yes
Contiguous: Yes
Permitted: Yes
Wet space: No
Addition: No
Conversion: No

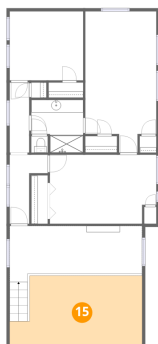
14 Floor 2 - Bedroom



Dimensions: 16'11" x 11'0"
Area: 186 sq. ft
Counted as living area: Yes

Heated: Yes
Finished: Yes
Enclosed: Yes
Contiguous: Yes
Permitted: Yes
Wet space: No
Addition: No
Conversion: No

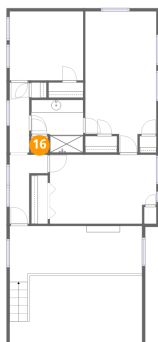
15 Floor 2 - Open To Below



Dimensions: 21'1" x 11'0"
Area: 232 sq. ft
Counted as living area: No

Heated: No
Finished: No
Enclosed: No
Contiguous: Yes
Permitted: No
Wet space: No
Addition: No
Conversion: No

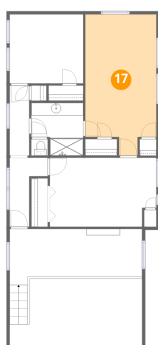
16 Floor 2 - Bath



Dimensions: 2'7" x 2'7"
Area: 7 sq. ft
Counted as living area: Yes

Heated: Yes
Finished: Yes
Enclosed: Yes
Contiguous: Yes
Permitted: Yes
Wet space: No
Addition: No
Conversion: No

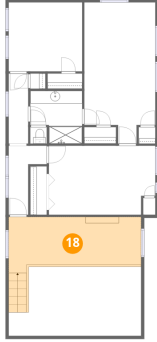
17 Floor 2 - Primary Bedroom



Dimensions: 11'4" x 22'6"
Area: 254 sq. ft
Counted as living area: Yes

Heated: Yes
Finished: Yes
Enclosed: Yes
Contiguous: Yes
Permitted: Yes
Wet space: No
Addition: No
Conversion: No

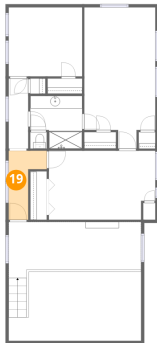
18 Floor 2 - Loft



Dimensions: 21'1" x 8'11"
Area: 188 sq. ft
Counted as living area: Yes

Heated: Yes
Finished: Yes
Enclosed: Yes
Contiguous: Yes
Permitted: Yes
Wet space: No
Addition: No
Conversion: No

19 Floor 2 - Hall



Dimensions: 6'1" x 11'0"
Area: 67 sq. ft
Counted as living area: Yes

Heated: Yes
Finished: Yes
Enclosed: Yes
Contiguous: Yes
Permitted: Yes
Wet space: No
Addition: No
Conversion: No