

632 Crestone Street, Johnstown, Weld County, Colorado, United States, 80534




Total Area: 1973 sq. ft


Below Ground: 0 sq. ft, 1st Floor: 904 sq. ft, 2nd Floor: 1069 sq. ft

Excluded: Basement 812 sq. ft, Garage 508 sq. ft, Porch 137 sq. ft, Walls: 242 sq. ft

Property summary

 3 Floors

 4 Bedrooms

 2 Bathrooms

Home data report

632 Crestone Street, Johnstown, Weld County, Colorado, United States, 80534



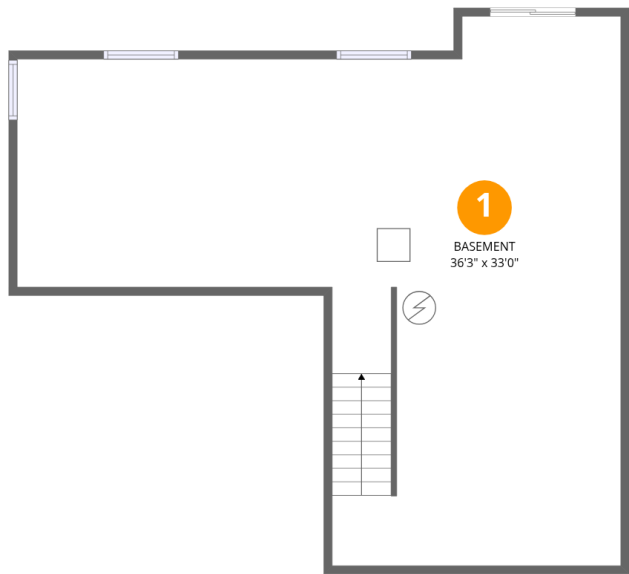
1
Half baths



1
Garages

Home data report

632 Crestone Street, Johnstown, Weld County, Colorado, United States, 80534



Room dimensions

Floor 1 Below grade Total:0sqft Excluded: 812sqft

#		Dimensions	sqft	Counted as living area
1	Basement	36'3" x 33'0"	812 sq. ft	No

632 Crestone Street, Johnstown, Weld County, Colorado, United States, 80534

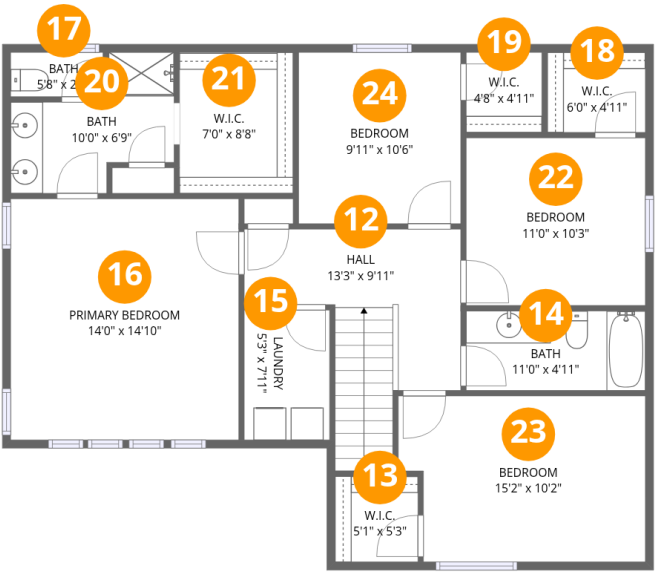


Room dimensions

Floor 2 Total:904sqft Excluded: 645sqft

#		Dimensions	sqft	Counted as living area
2	Kitchen	11'3" x 16'2"	163 sq. ft	Yes
3	Pantry	4'2" x 4'7"	17 sq. ft	Yes
4	Hall	5'2" x 2'11"	15 sq. ft	Yes
5	Office	9'4" x 10'4"	97 sq. ft	Yes
6	Living Room	19'11" x 14'6"	289 sq. ft	Yes
7	Dining Area	7'10" x 14'6"	113 sq. ft	Yes
8	Foyer	9'4" x 16'9"	157 sq. ft	Yes
9	Garage	24'7" x 21'2"	508 sq. ft	No
10	Porch	19'2" x 7'0"	137 sq. ft	No
11	Bath	4'2" x 5'8"	24 sq. ft	Yes

632 Crestone Street, Johnstown, Weld County, Colorado, United States, 80534



Room dimensions

Floor 3 Total:1069sqft Excluded: 0sqft

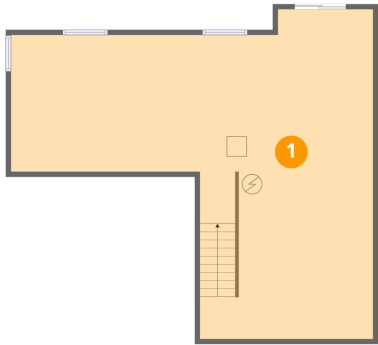
#		Dimensions	sqft	Counted as living area
12	Hall	13'3" x 9'11"	120 sq. ft	Yes
13	W.I.C.	5'1" x 5'3"	27 sq. ft	Yes
14	Bath	11'0" x 4'11"	54 sq. ft	Yes
15	Laundry	5'3" x 7'11"	42 sq. ft	Yes
16	Primary Bedroom	14'0" x 14'10"	207 sq. ft	Yes
17	Bath	5'8" x 2'8"	15 sq. ft	Yes
18	W.I.C.	6'0" x 4'11"	30 sq. ft	Yes
19	W.I.C.	4'8" x 4'11"	23 sq. ft	Yes
20	Bath	10'0" x 6'9"	61 sq. ft	Yes
21	W.I.C.	7'0" x 8'8"	60 sq. ft	Yes
22	Bedroom	11'0" x 10'3"	113 sq. ft	Yes

Home data report

632 Crestone Street, Johnstown, Weld County, Colorado, United States, 80534

#		Dimensions	sqft	Counted as living area
23	Bedroom	15'2" x 10'2"	146 sq. ft	Yes
24	Bedroom	9'11" x 10'6"	105 sq. ft	Yes

1 Floor 1 - Basement



Dimensions: 36'3" x 33'0"
Area: 812 sq. ft
Counted as living area: No

Heated: Yes
Finished: No
Enclosed: Yes
Contiguous: Yes
Permitted: Yes
Wet space: No
Addition: No
Conversion: No

2 Floor 2 - Kitchen



Dimensions: 11'3" x 16'2"
Area: 163 sq. ft
Counted as living area: Yes

Heated: Yes
Finished: Yes
Enclosed: Yes
Contiguous: Yes
Permitted: Yes
Wet space: No
Addition: No
Conversion: No

632 Crestone Street, Johnstown, Weld County, Colorado, United States, 80534

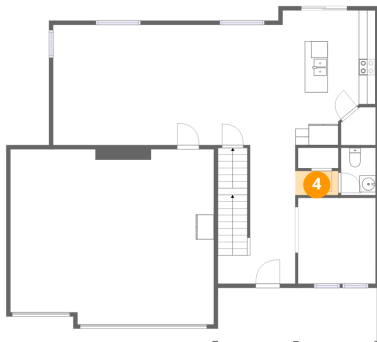
3 Floor 2 - Pantry



Dimensions: 4'2" x 4'7"
Area: 17 sq. ft
Counted as living area: Yes

Heated: Yes
Finished: Yes
Enclosed: Yes
Contiguous: Yes
Permitted: Yes
Wet space: No
Addition: No
Conversion: No

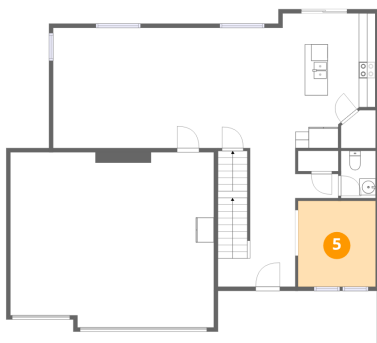
4 Floor 2 - Hall



Dimensions: 5'2" x 2'11"
Area: 15 sq. ft
Counted as living area: Yes

Heated: Yes
Finished: Yes
Enclosed: Yes
Contiguous: Yes
Permitted: Yes
Wet space: No
Addition: No
Conversion: No

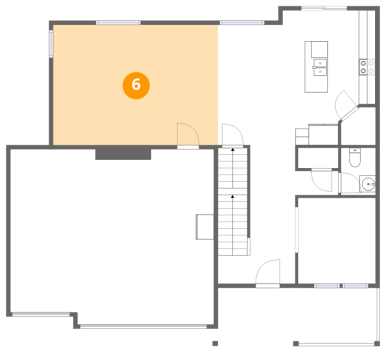
5 Floor 2 - Office



Dimensions: 9'4" x 10'4"
Area: 97 sq. ft
Counted as living area: Yes

Heated: Yes
Finished: Yes
Enclosed: Yes
Contiguous: Yes
Permitted: Yes
Wet space: No
Addition: No
Conversion: No

6 Floor 2 - Living Room



Dimensions: 19'11" x 14'6"
Area: 289 sq. ft
Counted as living area: Yes

Heated: Yes
Finished: Yes
Enclosed: Yes
Contiguous: Yes
Permitted: Yes
Wet space: No
Addition: No
Conversion: No

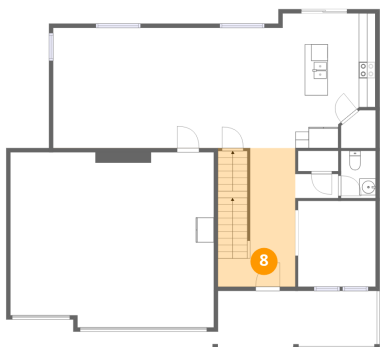
7 Floor 2 - Dining Area



Dimensions: 7'10" x 14'6"
Area: 113 sq. ft
Counted as living area: Yes

Heated: Yes
Finished: Yes
Enclosed: Yes
Contiguous: Yes
Permitted: Yes
Wet space: No
Addition: No
Conversion: No

8 Floor 2 - Foyer



Dimensions: 9'4" x 16'9"
Area: 157 sq. ft
Counted as living area: Yes

Heated: Yes
Finished: Yes
Enclosed: Yes
Contiguous: Yes
Permitted: Yes
Wet space: No
Addition: No
Conversion: No

9 Floor 2 - Garage



Dimensions: 24'7" x 21'2"
Area: 508 sq. ft
Counted as living area: No

Heated: No
Finished: No
Enclosed: Yes
Contiguous: Yes
Permitted: Yes
Wet space: No
Addition: No
Conversion: No

10 Floor 2 - Porch



Dimensions: 19'2" x 7'0"
Area: 137 sq. ft
Counted as living area: No

Heated: No
Finished: No
Enclosed: No
Contiguous: Yes
Permitted: Yes
Wet space: No
Addition: No
Conversion: No

11 Floor 2 - Bath



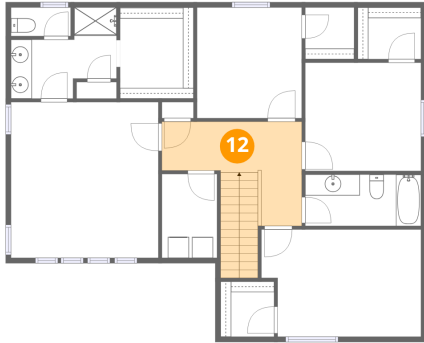
Dimensions: 4'2" x 5'8"
Area: 24 sq. ft
Counted as living area: Yes

Heated: Yes
Finished: Yes
Enclosed: Yes
Contiguous: Yes
Permitted: Yes
Wet space: Yes
Addition: No
Conversion: No

Home data report

632 Crestone Street, Johnstown, Weld County, Colorado, United States, 80534

12 Floor 3 - Hall



Dimensions: 13'3" x 9'11"
Area: 120 sq. ft
Counted as living area: Yes

Heated: Yes
Finished: Yes
Enclosed: Yes
Contiguous: Yes
Permitted: Yes
Wet space: No
Addition: No
Conversion: No

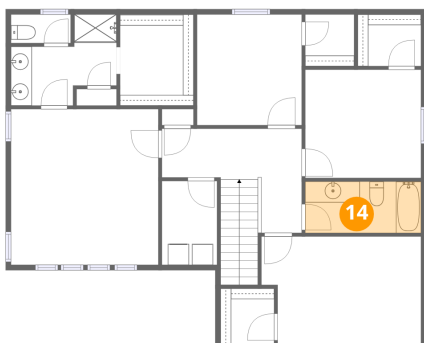
13 Floor 3 - W.I.C.



Dimensions: 5'1" x 5'3"
Area: 27 sq. ft
Counted as living area: Yes

Heated: Yes
Finished: Yes
Enclosed: Yes
Contiguous: Yes
Permitted: Yes
Wet space: No
Addition: No
Conversion: No

14 Floor 3 - Bath



Dimensions: 11'0" x 4'11"
Area: 54 sq. ft
Counted as living area: Yes

Heated: Yes
Finished: Yes
Enclosed: Yes
Contiguous: Yes
Permitted: Yes
Wet space: Yes
Addition: No
Conversion: No

632 Crestone Street, Johnstown, Weld County, Colorado, United States, 80534

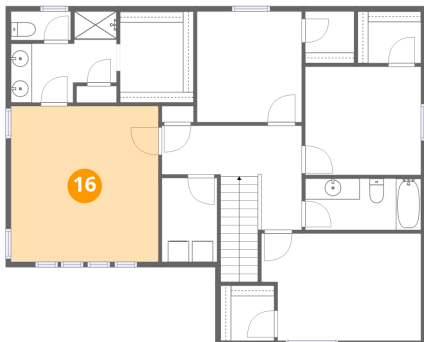
15 Floor 3 - Laundry



Dimensions: 5'3" x 7'11"
Area: 42 sq. ft
Counted as living area: Yes

Heated: Yes
Finished: Yes
Enclosed: Yes
Contiguous: Yes
Permitted: Yes
Wet space: No
Addition: No
Conversion: No

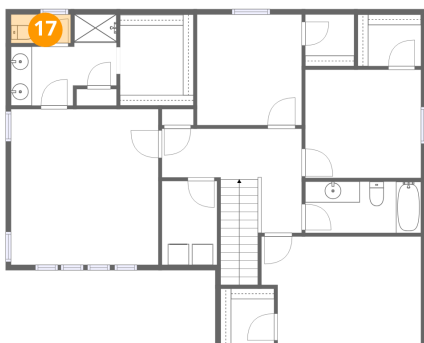
16 Floor 3 - Primary Bedroom



Dimensions: 14'0" x 14'10"
Area: 207 sq. ft
Counted as living area: Yes

Heated: Yes
Finished: Yes
Enclosed: Yes
Contiguous: Yes
Permitted: Yes
Wet space: No
Addition: No
Conversion: No

17 Floor 3 - Bath



Dimensions: 5'8" x 2'8"
Area: 15 sq. ft
Counted as living area: Yes

Heated: Yes
Finished: Yes
Enclosed: Yes
Contiguous: Yes
Permitted: Yes
Wet space: Yes
Addition: No
Conversion: No

Home data report

632 Crestone Street, Johnstown, Weld County, Colorado, United States, 80534

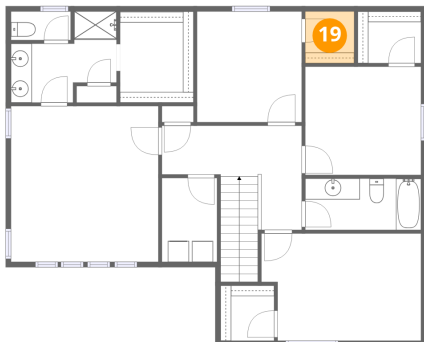
18 Floor 3 - W.I.C.



Dimensions: 6'0" x 4'11"
Area: 30 sq. ft
Counted as living area: Yes

Heated: Yes
Finished: Yes
Enclosed: Yes
Contiguous: Yes
Permitted: Yes
Wet space: No
Addition: No
Conversion: No

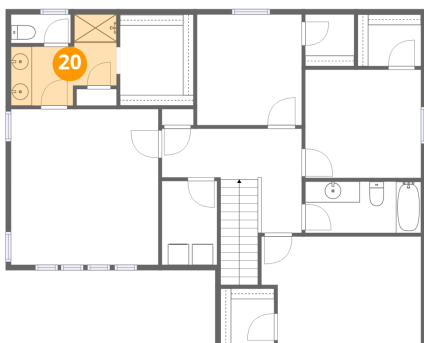
19 Floor 3 - W.I.C.



Dimensions: 4'8" x 4'11"
Area: 23 sq. ft
Counted as living area: Yes

Heated: Yes
Finished: Yes
Enclosed: Yes
Contiguous: Yes
Permitted: Yes
Wet space: No
Addition: No
Conversion: No

20 Floor 3 - Bath



Dimensions: 10'0" x 6'9"
Area: 61 sq. ft
Counted as living area: Yes

Heated: Yes
Finished: Yes
Enclosed: Yes
Contiguous: Yes
Permitted: Yes
Wet space: Yes
Addition: No
Conversion: No

Home data report

632 Crestone Street, Johnstown, Weld County, Colorado, United States, 80534

21 Floor 3 - W.I.C.



Dimensions: 7'0" x 8'8"
Area: 60 sq. ft
Counted as living area: Yes

Heated: Yes
Finished: Yes
Enclosed: Yes
Contiguous: Yes
Permitted: Yes
Wet space: No
Addition: No
Conversion: No

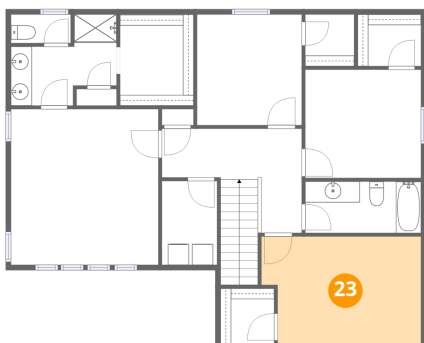
22 Floor 3 - Bedroom



Dimensions: 11'0" x 10'3"
Area: 113 sq. ft
Counted as living area: Yes

Heated: Yes
Finished: Yes
Enclosed: Yes
Contiguous: Yes
Permitted: Yes
Wet space: No
Addition: No
Conversion: No

23 Floor 3 - Bedroom



Dimensions: 15'2" x 10'2"
Area: 146 sq. ft
Counted as living area: Yes

Heated: Yes
Finished: Yes
Enclosed: Yes
Contiguous: Yes
Permitted: Yes
Wet space: No
Addition: No
Conversion: No

632 Crestone Street, Johnstown, Weld County, Colorado, United States, 80534

24 Floor 3 - Bedroom



Dimensions: 9'11" x 10'6"
Area: 105 sq. ft
Counted as living area: Yes

Heated: Yes
Finished: Yes
Enclosed: Yes
Contiguous: Yes
Permitted: Yes
Wet space: No
Addition: No
Conversion: No