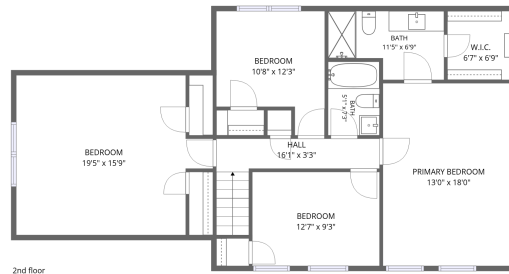


Home data report

100 Accomac Turning, Yorktown, VA, US



Total Area: 2081 sq. ft

1st Floor: 1029 sq. ft, 2nd Floor: 1052 sq. ft

Excluded: Garage 392 sq. ft, Screened porch 213 sq. ft, Fireplace 8 sq. ft, Walls: 194 sq. ft

Property summary



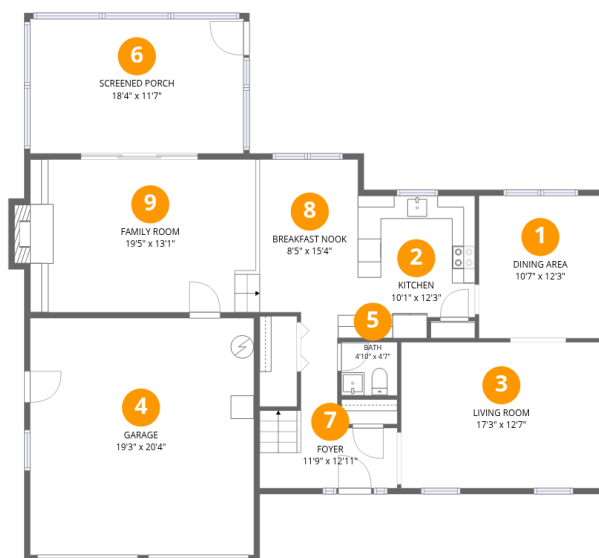
Home data report

100 Accomac Turning, Yorktown, VA, US

 **1**
Half baths

 **1**
Garages

100 Accomac Turning, Yorktown, VA, US



Room dimensions

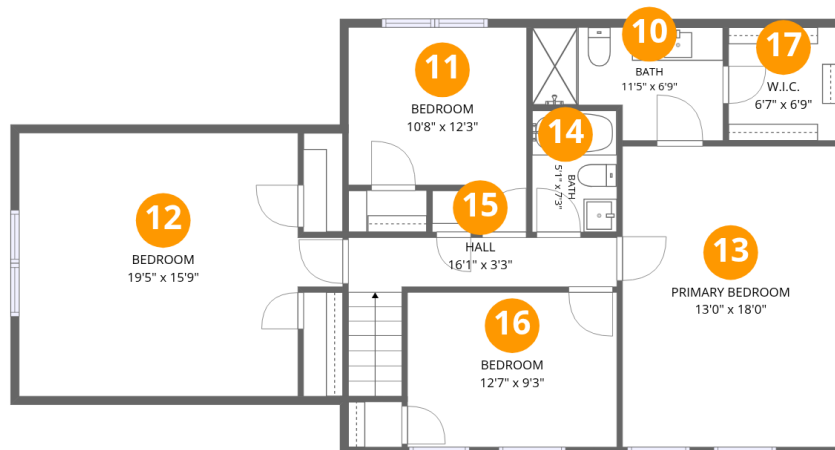
Floor 1

Total:1029sqft

Excluded: 613sqft

#		Dimensions	sqft	Counted as living area
1	Dining Area	10'7" x 12'3"	129 sq. ft	Yes
2	Kitchen	10'1" x 12'3"	116 sq. ft	Yes
3	Living Room	17'3" x 12'7"	217 sq. ft	Yes
4	Garage	19'3" x 20'4"	392 sq. ft	No
5	Bath	4'10" x 4'7"	22 sq. ft	Yes
6	Screened Porch	18'4" x 11'7"	213 sq. ft	No
7	Foyer	11'9" x 12'11"	91 sq. ft	Yes
8	Breakfast Nook	8'5" x 15'4"	122 sq. ft	Yes
9	Family Room	19'5" x 13'1"	267 sq. ft	Yes

100 Accomac Turning, Yorktown, VA, US



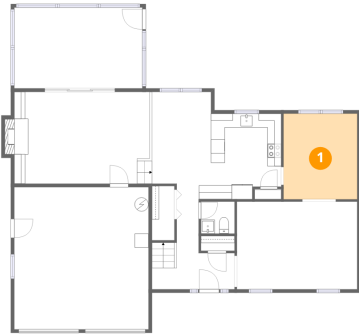
Room dimensions

Floor 2

Total: 1052 sqft Excluded: 0 sqft

#		Dimensions	sqft	Counted as living area
10	Bath	11'5" x 6'9"	66 sq. ft	Yes
11	Bedroom	10'8" x 12'3"	109 sq. ft	Yes
12	Bedroom	19'5" x 15'9"	272 sq. ft	Yes
13	Primary Bedroom	13'0" x 18'0"	234 sq. ft	Yes
14	Bath	5'1" x 7'3"	37 sq. ft	Yes
15	Hall	16'1" x 3'3"	69 sq. ft	Yes
16	Bedroom	12'7" x 9'3"	117 sq. ft	Yes
17	W.I.C.	6'7" x 6'9"	45 sq. ft	Yes

1 Floor 1 - Dining Area



Dimensions: 10'7" x 12'3"
Area: 129 sq. ft
Counted as living area: Yes

Heated: Yes
Finished: Yes
Enclosed: Yes
Contiguous: Yes
Permitted: Yes
Wet space: No
Addition: No
Conversion: No

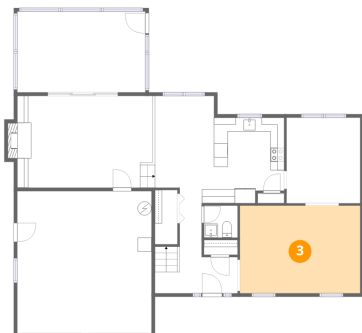
2 Floor 1 - Kitchen



Dimensions: 10'1" x 12'3"
Area: 116 sq. ft
Counted as living area: Yes

Heated: Yes
Finished: Yes
Enclosed: Yes
Contiguous: Yes
Permitted: Yes
Wet space: No
Addition: No
Conversion: No

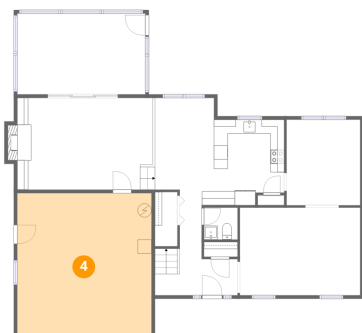
3 Floor 1 - Living Room



Dimensions: 17'3" x 12'7"
Area: 217 sq. ft
Counted as living area: Yes

Heated: Yes
Finished: Yes
Enclosed: Yes
Contiguous: Yes
Permitted: Yes
Wet space: No
Addition: No
Conversion: No

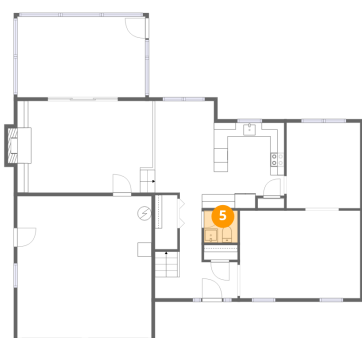
4 Floor 1 - Garage



Dimensions: 19'3" x 20'4"
Area: 392 sq. ft
Counted as living area: No

Heated: No
Finished: No
Enclosed: Yes
Contiguous: Yes
Permitted: Yes
Wet space: No
Addition: No
Conversion: No

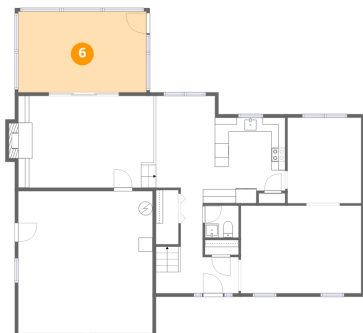
5 Floor 1 - Bath



Dimensions: 4'10" x 4'7"
Area: 22 sq. ft
Counted as living area: Yes

Heated: Yes
Finished: Yes
Enclosed: Yes
Contiguous: Yes
Permitted: Yes
Wet space: Yes
Addition: No
Conversion: No

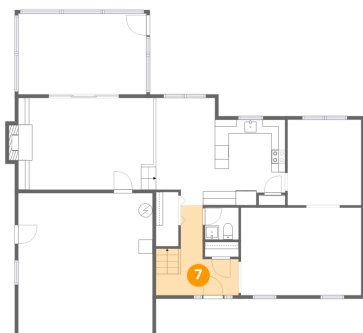
6 Floor 1 - Screened Porch



Dimensions: 18'4" x 11'7"
Area: 213 sq. ft
Counted as living area: No

Heated: No
Finished: No
Enclosed: No
Contiguous: Yes
Permitted: Yes
Wet space: No
Addition: No
Conversion: No

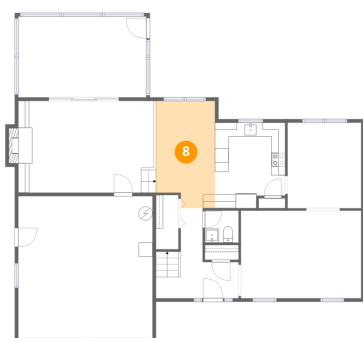
7 Floor 1 - Foyer



Dimensions: 11'9" x 12'11"
Area: 91 sq. ft
Counted as living area: Yes

Heated: Yes
Finished: Yes
Enclosed: Yes
Contiguous: Yes
Permitted: Yes
Wet space: No
Addition: No
Conversion: No

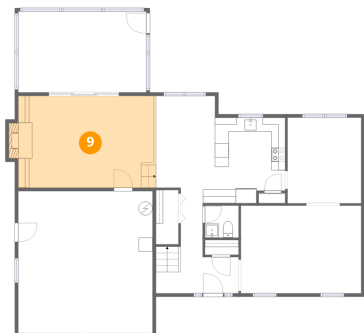
8 Floor 1 - Breakfast Nook



Dimensions: 8'5" x 15'4"
Area: 122 sq. ft
Counted as living area: Yes

Heated: Yes
Finished: Yes
Enclosed: Yes
Contiguous: Yes
Permitted: Yes
Wet space: No
Addition: No
Conversion: No

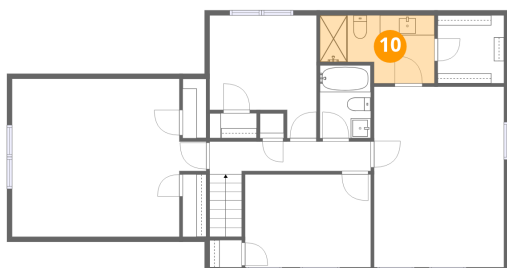
9 Floor 1 - Family Room



Dimensions: 19'5" x 13'1"
Area: 267 sq. ft
Counted as living area: Yes

Heated: Yes
Finished: Yes
Enclosed: Yes
Contiguous: Yes
Permitted: Yes
Wet space: No
Addition: No
Conversion: No

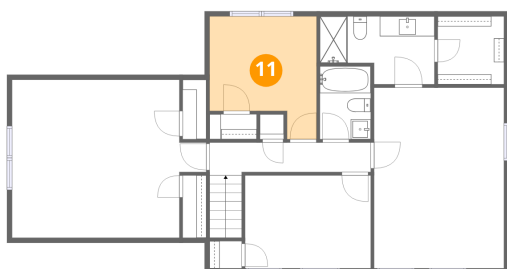
10 Floor 2 - Bath



Dimensions: 11'5" x 6'9"
Area: 66 sq. ft
Counted as living area: Yes

Heated: Yes
Finished: Yes
Enclosed: Yes
Contiguous: Yes
Permitted: Yes
Wet space: Yes
Addition: No
Conversion: No

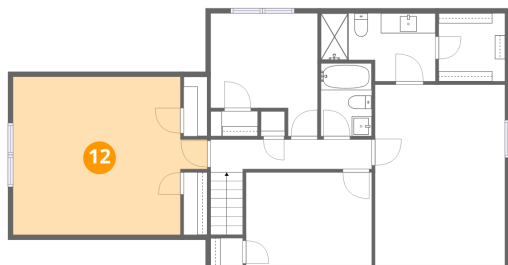
11 Floor 2 - Bedroom



Dimensions: 10'8" x 12'3"
Area: 109 sq. ft
Counted as living area: Yes

Heated: Yes
Finished: Yes
Enclosed: Yes
Contiguous: Yes
Permitted: Yes
Wet space: No
Addition: No
Conversion: No

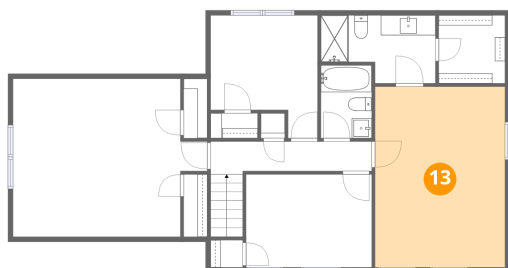
12 Floor 2 - Bedroom



Dimensions: 19'5" x 15'9"
Area: 272 sq. ft
Counted as living area: Yes

Heated: Yes
Finished: Yes
Enclosed: Yes
Contiguous: Yes
Permitted: Yes
Wet space: No
Addition: No
Conversion: No

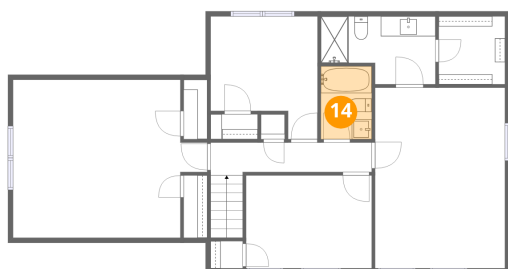
13 Floor 2 - Primary Bedroom



Dimensions: 13'0" x 18'0"
Area: 234 sq. ft
Counted as living area: Yes

Heated: Yes
Finished: Yes
Enclosed: Yes
Contiguous: Yes
Permitted: Yes
Wet space: No
Addition: No
Conversion: No

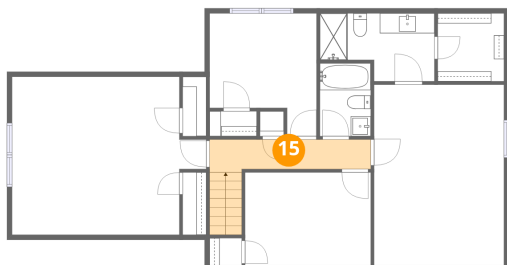
14 Floor 2 - Bath



Dimensions: 5'1" x 7'3"
Area: 37 sq. ft
Counted as living area: Yes

Heated: Yes
Finished: Yes
Enclosed: Yes
Contiguous: Yes
Permitted: Yes
Wet space: Yes
Addition: No
Conversion: No

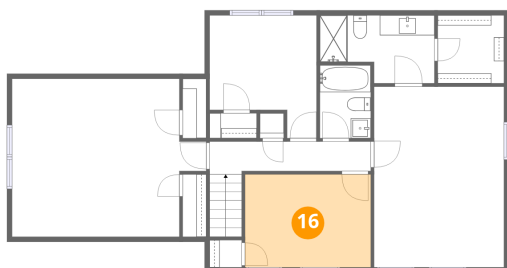
15 Floor 2 - Hall



Dimensions: 16'1" x 3'3"
Area: 69 sq. ft
Counted as living area: Yes

Heated: Yes
Finished: Yes
Enclosed: Yes
Contiguous: Yes
Permitted: Yes
Wet space: No
Addition: No
Conversion: No

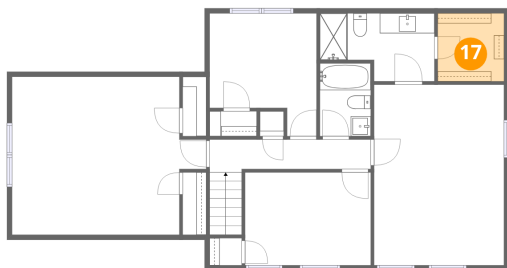
16 Floor 2 - Bedroom



Dimensions: 12'7" x 9'3"
Area: 117 sq. ft
Counted as living area: Yes

Heated: Yes
Finished: Yes
Enclosed: Yes
Contiguous: Yes
Permitted: Yes
Wet space: No
Addition: No
Conversion: No

17 Floor 2 - W.I.C.



Dimensions: 6'7" x 6'9"
Area: 45 sq. ft
Counted as living area: Yes

Heated: Yes
Finished: Yes
Enclosed: Yes
Contiguous: Yes
Permitted: Yes
Wet space: No
Addition: No
Conversion: No