

Home data report

61 Adelaide St, Cannington, ON, CA



Total Area: 1567 sq. ft

1st Floor: 597 sq. ft, 2nd Floor: 970 sq. ft

Excluded: Garage 232 sq. ft, Low ceiling 40 sq. ft, Utility 67 sq. ft, Walls: 143 sq. ft

Property summary

 **2** Floors

 **3** Bedrooms

 **1** Bathrooms

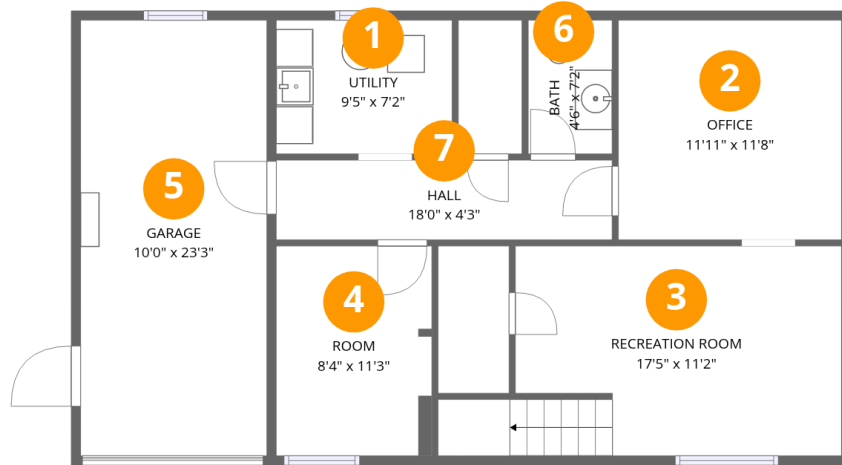
Home data report

61 Adelaide St, Cannington, ON, CA

 **1**
Half baths

 **1**
Garages

61 Adelaide St, Cannington, ON, CA



Room dimensions

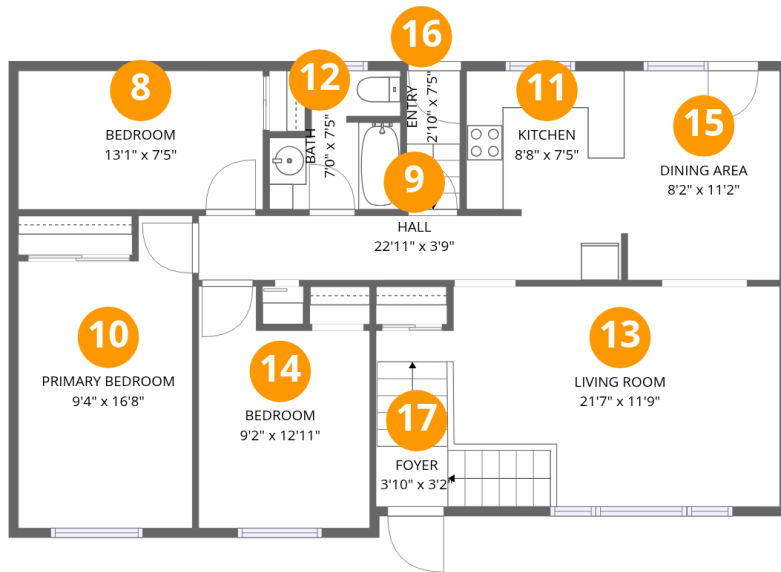
Floor 1

Total: 597 sqft

Excluded: 339 sqft

#		Dimensions	sqft	Counted as living area
1	Utility	9'5" x 7'2"	67 sq. ft	No
2	Office	11'11" x 11'8"	140 sq. ft	Yes
3	Recreation Room	17'5" x 11'2"	206 sq. ft	Yes
4	Room	8'4" x 11'3"	93 sq. ft	Yes
5	Garage	10'0" x 23'3"	232 sq. ft	No
6	Bath	4'6" x 7'2"	32 sq. ft	Yes
7	Hall	18'0" x 4'3"	77 sq. ft	Yes

61 Adelaide St, Cannington, ON, CA



Room dimensions

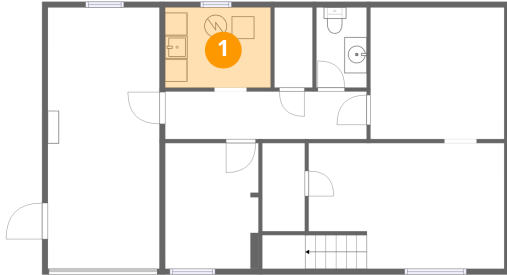
Floor 2

Total: 970 sqft

Excluded: 0 sqft

#		Dimensions	sqft	Counted as living area
8	Bedroom	13'1" x 7'5"	97 sq. ft	Yes
9	Hall	22'11" x 3'9"	80 sq. ft	Yes
10	Primary Bedroom	9'4" x 16'8"	140 sq. ft	Yes
11	Kitchen	8'8" x 7'5"	64 sq. ft	Yes
12	Bath	7'0" x 7'5"	43 sq. ft	Yes
13	Living Room	21'7" x 11'9"	198 sq. ft	Yes
14	Bedroom	9'2" x 12'11"	104 sq. ft	Yes
15	Dining Area	8'2" x 11'2"	91 sq. ft	Yes
16	Entry	2'10" x 7'5"	21 sq. ft	Yes
17	Foyer	3'10" x 3'2"	46 sq. ft	Yes

1 Floor 1 - Utility



Dimensions: 9'5" x 7'2"
Area: 67 sq. ft
Counted as living area: No

Heated: Yes
Finished: No
Enclosed: Yes
Contiguous: Yes
Permitted: Yes
Wet space: No
Addition: No
Conversion: No

2 Floor 1 - Office



Dimensions: 11'11" x 11'8"
Area: 140 sq. ft
Counted as living area: Yes

Heated: Yes
Finished: Yes
Enclosed: Yes
Contiguous: Yes
Permitted: Yes
Wet space: No
Addition: No
Conversion: No

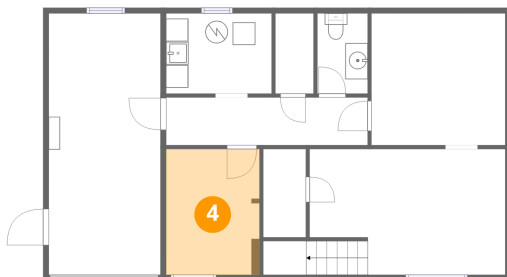
3 Floor 1 - Recreation Room



Dimensions: 17'5" x 11'2"
Area: 206 sq. ft
Counted as living area: Yes

Heated: Yes
Finished: Yes
Enclosed: Yes
Contiguous: Yes
Permitted: Yes
Wet space: No
Addition: No
Conversion: No

4 Floor 1 - Room



Dimensions: 8'4" x 11'3"
Area: 93 sq. ft
Counted as living area: Yes

Heated: Yes
Finished: Yes
Enclosed: Yes
Contiguous: Yes
Permitted: Yes
Wet space: No
Addition: No
Conversion: No

5 Floor 1 - Garage



Dimensions: 10'0" x 23'3"
Area: 232 sq. ft
Counted as living area: No

Heated: No
Finished: No
Enclosed: Yes
Contiguous: Yes
Permitted: Yes
Wet space: No
Addition: No
Conversion: No

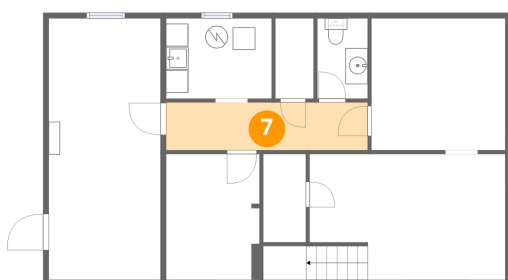
6 Floor 1 - Bath



Dimensions: 4'6" x 7'2"
Area: 32 sq. ft
Counted as living area: Yes

Heated: Yes
Finished: Yes
Enclosed: Yes
Contiguous: Yes
Permitted: Yes
Wet space: Yes
Addition: No
Conversion: No

7 Floor 1 - Hall



Dimensions: 18'0" x 4'3"
Area: 77 sq. ft
Counted as living area: Yes

Heated: Yes
Finished: Yes
Enclosed: Yes
Contiguous: Yes
Permitted: Yes
Wet space: No
Addition: No
Conversion: No

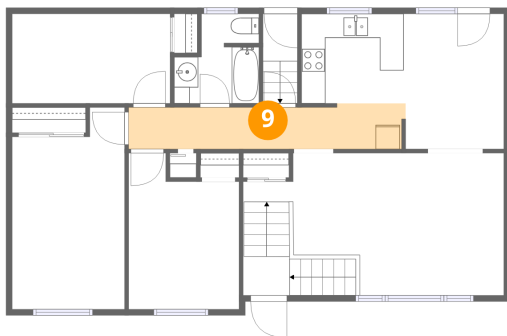
8 Floor 2 - Bedroom



Dimensions: 13'1" x 7'5"
Area: 97 sq. ft
Counted as living area: Yes

Heated: Yes
Finished: Yes
Enclosed: Yes
Contiguous: Yes
Permitted: Yes
Wet space: No
Addition: No
Conversion: No

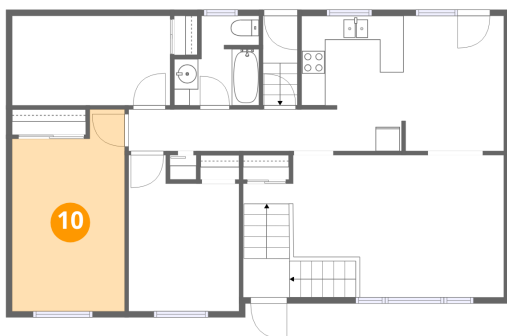
9 Floor 2 - Hall



Dimensions: 22'11" x 3'9"
Area: 80 sq. ft
Counted as living area: Yes

Heated: Yes
Finished: Yes
Enclosed: Yes
Contiguous: Yes
Permitted: Yes
Wet space: No
Addition: No
Conversion: No

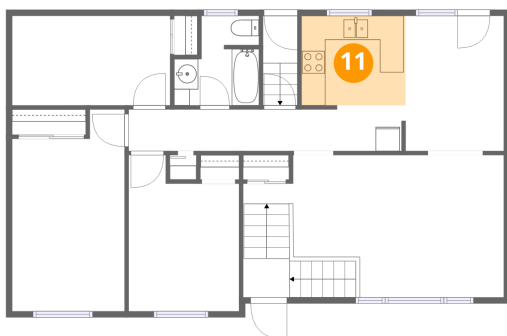
10 Floor 2 - Primary Bedroom



Dimensions: 9'4" x 16'8"
Area: 140 sq. ft
Counted as living area: Yes

Heated: Yes
Finished: Yes
Enclosed: Yes
Contiguous: Yes
Permitted: Yes
Wet space: No
Addition: No
Conversion: No

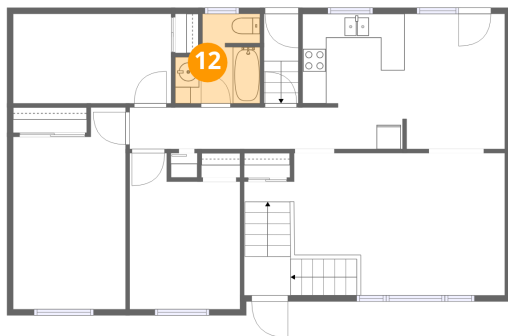
11 Floor 2 - Kitchen



Dimensions: 8'8" x 7'5"
Area: 64 sq. ft
Counted as living area: Yes

Heated: Yes
Finished: Yes
Enclosed: Yes
Contiguous: Yes
Permitted: Yes
Wet space: No
Addition: No
Conversion: No

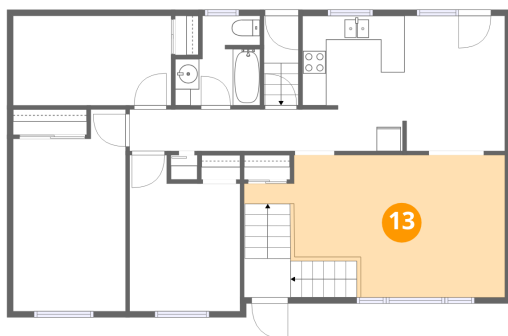
12 Floor 2 - Bath



Dimensions: 7'0" x 7'5"
Area: 43 sq. ft
Counted as living area: Yes

Heated: Yes
Finished: Yes
Enclosed: Yes
Contiguous: Yes
Permitted: Yes
Wet space: Yes
Addition: No
Conversion: No

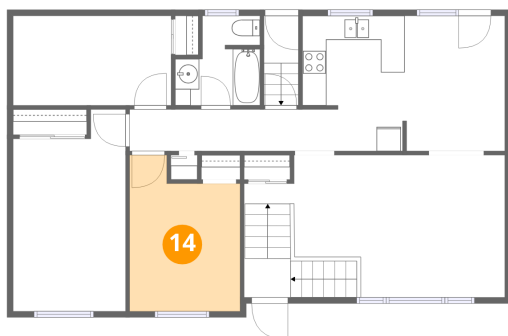
13 Floor 2 - Living Room



Dimensions: 21'7" x 11'9"
Area: 198 sq. ft
Counted as living area: Yes

Heated: Yes
Finished: Yes
Enclosed: Yes
Contiguous: Yes
Permitted: Yes
Wet space: No
Addition: No
Conversion: No

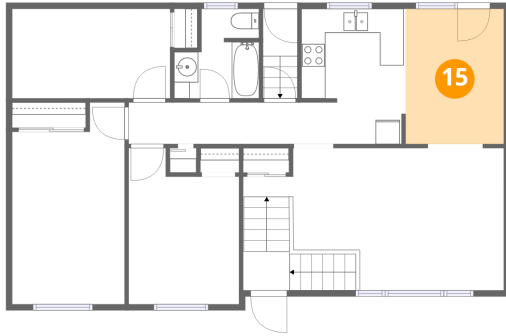
14 Floor 2 - Bedroom



Dimensions: 9'2" x 12'11"
Area: 104 sq. ft
Counted as living area: Yes

Heated: Yes
Finished: Yes
Enclosed: Yes
Contiguous: Yes
Permitted: Yes
Wet space: No
Addition: No
Conversion: No

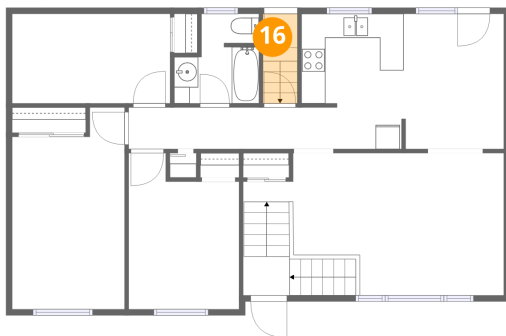
15 Floor 2 - Dining Area



Dimensions: 8'2" x 11'2"
Area: 91 sq. ft
Counted as living area: Yes

Heated: Yes
Finished: Yes
Enclosed: Yes
Contiguous: Yes
Permitted: Yes
Wet space: No
Addition: No
Conversion: No

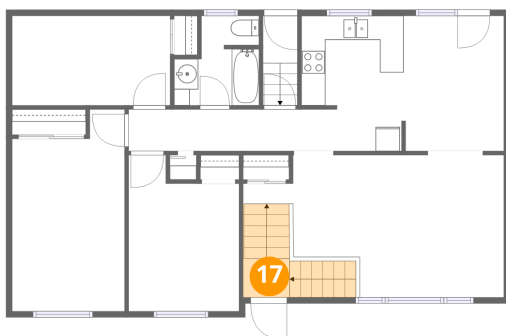
16 Floor 2 - Entry



Dimensions: 2'10" x 7'5"
Area: 21 sq. ft
Counted as living area: Yes

Heated: Yes
Finished: Yes
Enclosed: Yes
Contiguous: Yes
Permitted: Yes
Wet space: No
Addition: No
Conversion: No

17 Floor 2 - Foyer



Dimensions: 3'10" x 3'2"
Area: 46 sq. ft
Counted as living area: Yes

Heated: Yes
Finished: Yes
Enclosed: Yes
Contiguous: Yes
Permitted: Yes
Wet space: No
Addition: No
Conversion: No