

Home data report

36 East Broadway Avenue, Goldsboro, Etters, York County,  
Pennsylvania, United States, 17319



**Total Area: 1492 sq. ft**  
1st Floor: 728 sq. ft, 2nd Floor: 764 sq. ft  
Excluded: Garage 831 sq. ft, Porch 107 sq. ft, Deck 242 sq. ft, Walls: 162 sq. ft

Property summary

 **2** Floors

 **1** Bedrooms

 **1** Bathrooms

Home data report

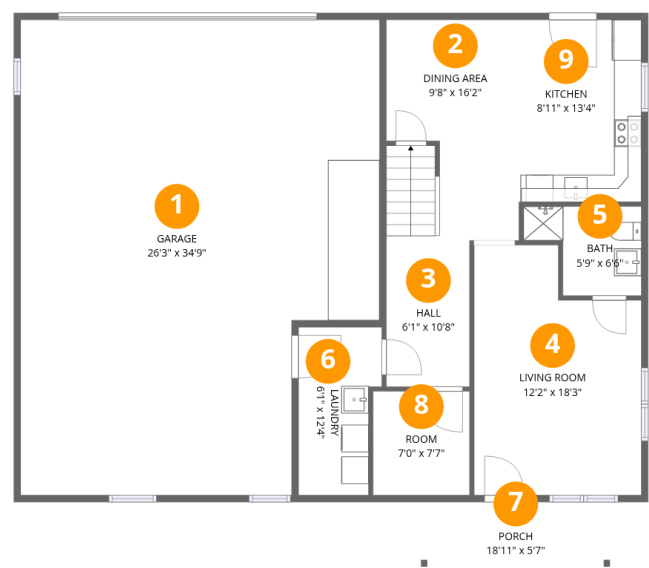
36 East Broadway Avenue, Goldsboro, Etters, York County,  
Pennsylvania, United States, 17319

 **1**  
Half baths

 **1**  
Garages

Home data report

36 East Broadway Avenue, Goldsboro, Etters, York County,  
Pennsylvania, United States, 17319

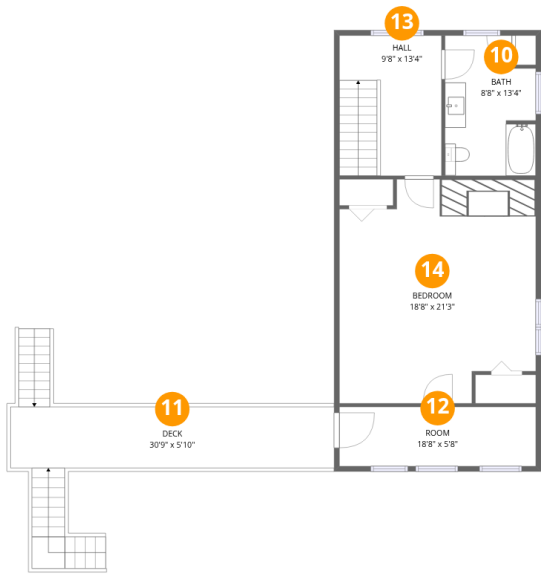


Room dimensions

Floor 1 Total:728sqft    Excluded: 938sqft

#		Dimensions	sqft	Counted as living area
1	Garage	26'3" x 34'9"	831 sq. ft	No
2	Dining Area	9'8" x 16'2"	155 sq. ft	Yes
3	Hall	6'1" x 10'8"	65 sq. ft	Yes
4	Living Room	12'2" x 18'3"	199 sq. ft	Yes
5	Bath	5'9" x 6'6"	37 sq. ft	Yes
6	Laundry	6'1" x 12'4"	67 sq. ft	Yes
7	Porch	18'11" x 5'7"	107 sq. ft	No
8	Room	7'0" x 7'7"	54 sq. ft	Yes
9	Kitchen	8'11" x 13'4"	119 sq. ft	Yes

36 East Broadway Avenue, Goldsboro, Etters, York County,  
Pennsylvania, United States, 17319

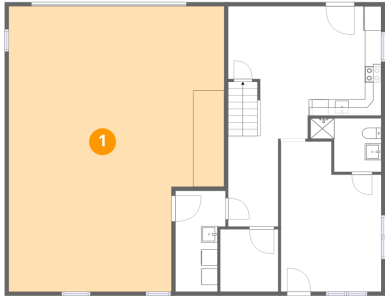


Room dimensions

Floor 2 Total:764sqft Excluded: 242sqft

#		Dimensions	sqft	Counted as living area
10	Bath	8'8" x 13'4"	107 sq. ft	Yes
11	Deck	30'9" x 5'10"	242 sq. ft	No
12	Room	18'8" x 5'8"	105 sq. ft	Yes
13	Hall	9'8" x 13'4"	129 sq. ft	Yes
14	Bedroom	18'8" x 21'3"	363 sq. ft	Yes

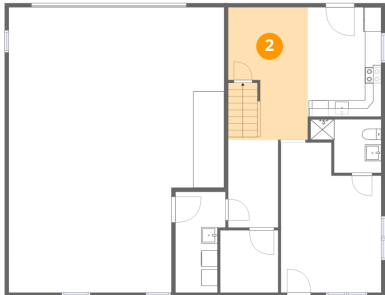
1 Floor 1 - Garage



Dimensions: 26'3" x 34'9"  
Area: 831 sq. ft  
Counted as living area: No

Heated: No  
Finished: No  
Enclosed: Yes  
Contiguous: Yes  
Permitted: Yes  
Wet space: No  
Addition: No  
Conversion: No

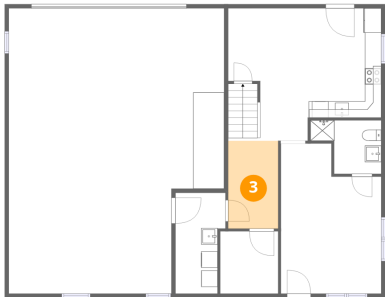
2 Floor 1 - Dining Area



Dimensions: 9'8" x 16'2"  
Area: 155 sq. ft  
Counted as living area: Yes

Heated: Yes  
Finished: Yes  
Enclosed: Yes  
Contiguous: Yes  
Permitted: Yes  
Wet space: No  
Addition: No  
Conversion: No

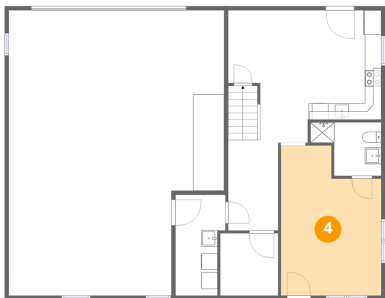
3 Floor 1 - Hall



Dimensions: 6'1" x 10'8"  
Area: 65 sq. ft  
Counted as living area: Yes

Heated: Yes  
Finished: Yes  
Enclosed: Yes  
Contiguous: Yes  
Permitted: Yes  
Wet space: No  
Addition: No  
Conversion: No

4 Floor 1 - Living Room



Dimensions: 12'2" x 18'3"  
Area: 199 sq. ft  
Counted as living area: Yes

Heated: Yes  
Finished: Yes  
Enclosed: Yes  
Contiguous: Yes  
Permitted: Yes  
Wet space: No  
Addition: No  
Conversion: No

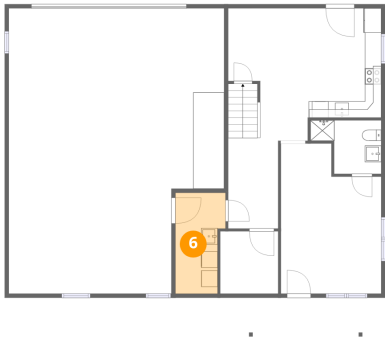
5 Floor 1 - Bath



Dimensions: 5'9" x 6'6"  
Area: 37 sq. ft  
Counted as living area: Yes

Heated: Yes  
Finished: Yes  
Enclosed: Yes  
Contiguous: Yes  
Permitted: Yes  
Wet space: No  
Addition: No  
Conversion: No

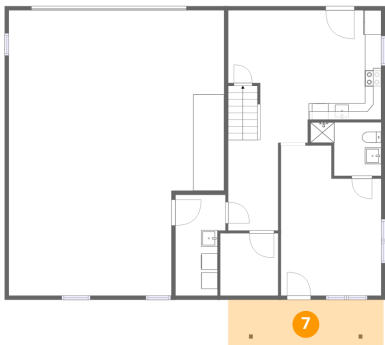
6 Floor 1 - Laundry



Dimensions: 6'1" x 12'4"  
Area: 67 sq. ft  
Counted as living area: Yes

Heated: Yes  
Finished: Yes  
Enclosed: Yes  
Contiguous: Yes  
Permitted: Yes  
Wet space: No  
Addition: No  
Conversion: No

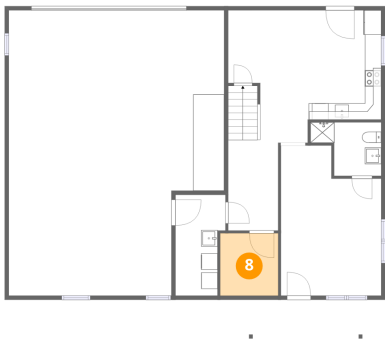
7 Floor 1 - Porch



Dimensions: 18'11" x 5'7"  
Area: 107 sq. ft  
Counted as living area: No

Heated: No  
Finished: No  
Enclosed: No  
Contiguous: Yes  
Permitted: Yes  
Wet space: No  
Addition: No  
Conversion: No

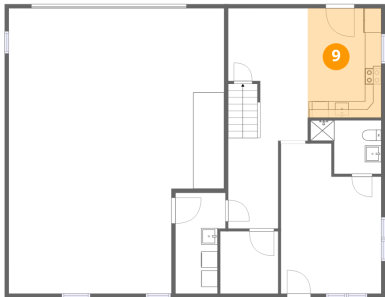
8 Floor 1 - Room



Dimensions: 7'0" x 7'7"  
Area: 54 sq. ft  
Counted as living area: Yes

Heated: Yes  
Finished: Yes  
Enclosed: Yes  
Contiguous: Yes  
Permitted: Yes  
Wet space: No  
Addition: No  
Conversion: No

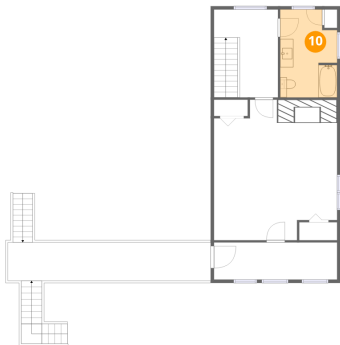
9 Floor 1 - Kitchen



Dimensions: 8'11" x 13'4"  
Area: 119 sq. ft  
Counted as living area: Yes

Heated: Yes  
Finished: Yes  
Enclosed: Yes  
Contiguous: Yes  
Permitted: Yes  
Wet space: No  
Addition: No  
Conversion: No

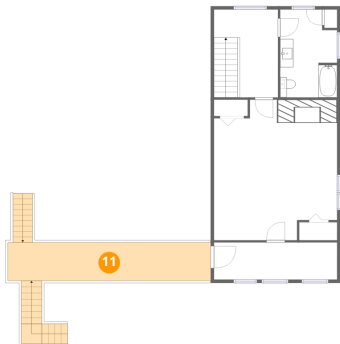
10 Floor 2 - Bath



Dimensions: 8'8" x 13'4"  
Area: 107 sq. ft  
Counted as living area: Yes

Heated: Yes  
Finished: Yes  
Enclosed: Yes  
Contiguous: Yes  
Permitted: Yes  
Wet space: Yes  
Addition: No  
Conversion: No

11 Floor 2 - Deck

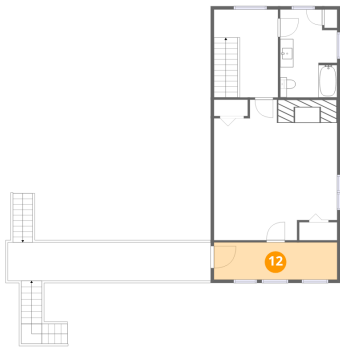


Dimensions: 30'9" x 5'10"  
Area: 242 sq. ft  
Counted as living area: No

Heated: No  
Finished: No  
Enclosed: No  
Contiguous: Yes  
Permitted: Yes  
Wet space: No  
Addition: No  
Conversion: No



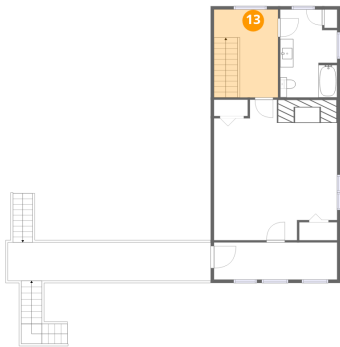
12 Floor 2 - Room



Dimensions: 18'8" x 5'8"  
Area: 105 sq. ft  
Counted as living area: Yes

Heated: Yes  
Finished: Yes  
Enclosed: Yes  
Contiguous: Yes  
Permitted: Yes  
Wet space: No  
Addition: No  
Conversion: No

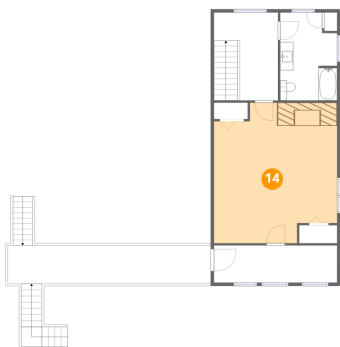
13 Floor 2 - Hall



Dimensions: 9'8" x 13'4"  
Area: 129 sq. ft  
Counted as living area: Yes

Heated: Yes  
Finished: Yes  
Enclosed: Yes  
Contiguous: Yes  
Permitted: Yes  
Wet space: No  
Addition: No  
Conversion: No

14 Floor 2 - Bedroom



Dimensions: 18'8" x 21'3"  
Area: 363 sq. ft  
Counted as living area: Yes

Heated: Yes  
Finished: Yes  
Enclosed: Yes  
Contiguous: Yes  
Permitted: Yes  
Wet space: No  
Addition: No  
Conversion: No