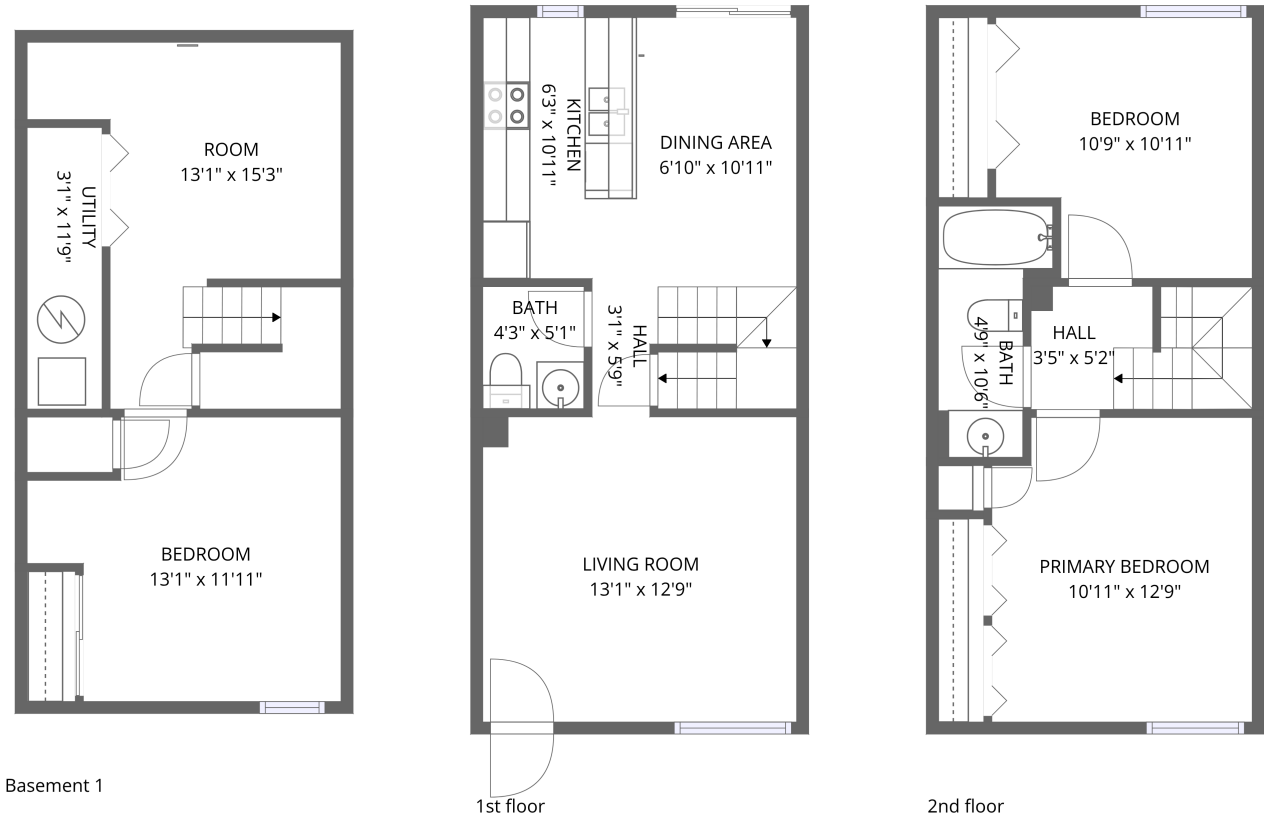


Home data report

5 S Elati St unit 3,Denver,CO,US



**Total Area: 1099 sq. ft**

Basement 1: 325 sq. ft, 1st Floor: 387 sq. ft, 2nd Floor: 387 sq. ft

Excluded: Utility 37 sq. ft, Walls: 83 sq. ft

Property summary

 **3** Floors

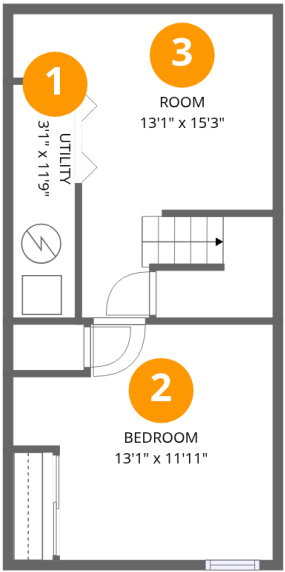
 **3** Bedrooms

 **1** Bathrooms

 **1** Half baths

Home data report

5 S Elati St unit 3,Denver,CO,US



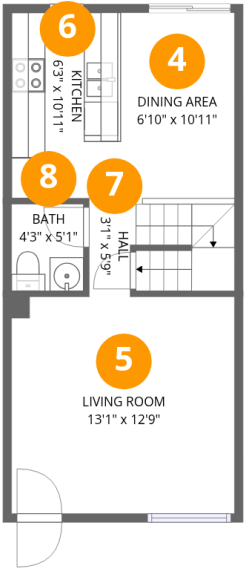
Room dimensions

Floor 1 Below grade Total:325sqft    Excluded: 37sqft

#		Dimensions	sqft	Counted as living area
1	Utility	3'1" x 11'9"	37 sq. ft	No
2	Bedroom	13'1" x 11'11"	156 sq. ft	Yes
3	Room	13'1" x 15'3"	200 sq. ft	Yes

Home data report

5 S Elati St unit 3,Denver,CO,US



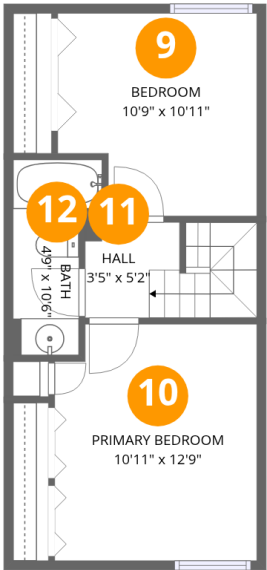
Room dimensions

Floor 2 Total:387sqft   Excluded: 0sqft

#		Dimensions	sqft	Counted as living area
4	Dining Area	6'10" x 10'11"	75 sq. ft	Yes
5	Living Room	13'1" x 12'9"	167 sq. ft	Yes
6	Kitchen	6'3" x 10'11"	68 sq. ft	Yes
7	Hall	3'1" x 5'9"	18 sq. ft	Yes
8	Bath	4'3" x 5'1"	22 sq. ft	Yes

Home data report

5 S Elati St unit 3,Denver,CO,US

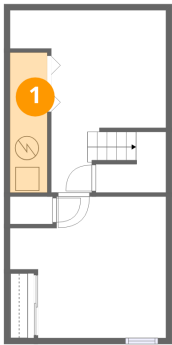


Room dimensions

Floor 3 Total:387sqft   Excluded: 0sqft

#		Dimensions	sqft	Counted as living area
9	Bedroom	10'9" x 10'11"	117 sq. ft	Yes
10	Primary Bedroom	10'11" x 12'9"	139 sq. ft	Yes
11	Hall	3'5" x 5'2"	18 sq. ft	Yes
12	Bath	4'9" x 10'6"	50 sq. ft	Yes

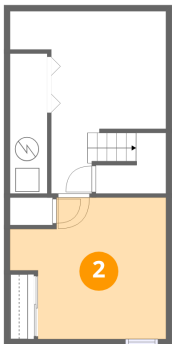
1 Floor 1 - Utility



Dimensions: 3'1" x 11'9"  
Area: 37 sq. ft  
Counted as living area: No

Heated: Yes  
Finished: No  
Enclosed: Yes  
Contiguous: Yes  
Permitted: Yes  
Wet space: No  
Addition: No  
Conversion: No

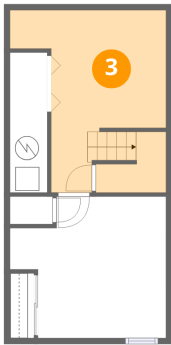
2 Floor 1 - Bedroom



Dimensions: 13'1" x 11'11"  
Area: 156 sq. ft  
Counted as living area: Yes

Heated: Yes  
Finished: Yes  
Enclosed: Yes  
Contiguous: Yes  
Permitted: Yes  
Wet space: No  
Addition: No  
Conversion: No

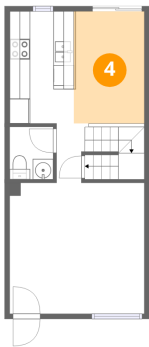
3 Floor 1 - Room



Dimensions: 13'1" x 15'3"  
Area: 200 sq. ft  
Counted as living area: Yes

Heated: Yes  
Finished: Yes  
Enclosed: Yes  
Contiguous: Yes  
Permitted: Yes  
Wet space: No  
Addition: No  
Conversion: No

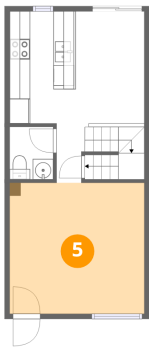
4 Floor 2 - Dining Area



Dimensions: 6'10" x 10'11"  
Area: 75 sq. ft  
Counted as living area: Yes

Heated: Yes  
Finished: Yes  
Enclosed: Yes  
Contiguous: Yes  
Permitted: Yes  
Wet space: No  
Addition: No  
Conversion: No

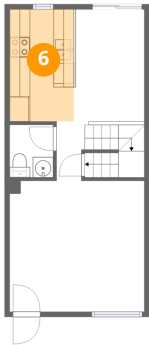
5 Floor 2 - Living Room



Dimensions: 13'1" x 12'9"  
Area: 167 sq. ft  
Counted as living area: Yes

Heated: Yes  
Finished: Yes  
Enclosed: Yes  
Contiguous: Yes  
Permitted: Yes  
Wet space: No  
Addition: No  
Conversion: No

6 Floor 2 - Kitchen



Dimensions: 6'3" x 10'11"  
Area: 68 sq. ft  
Counted as living area: Yes

Heated: Yes  
Finished: Yes  
Enclosed: Yes  
Contiguous: Yes  
Permitted: Yes  
Wet space: No  
Addition: No  
Conversion: No

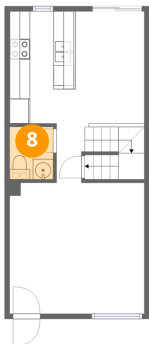
7 Floor 2 - Hall



Dimensions: 3'1" x 5'9"  
Area: 18 sq. ft  
Counted as living area: Yes

Heated: Yes  
Finished: Yes  
Enclosed: Yes  
Contiguous: Yes  
Permitted: Yes  
Wet space: No  
Addition: No  
Conversion: No

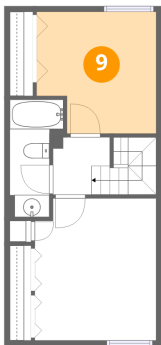
8 Floor 2 - Bath



Dimensions: 4'3" x 5'1"  
Area: 22 sq. ft  
Counted as living area: Yes

Heated: Yes  
Finished: Yes  
Enclosed: Yes  
Contiguous: Yes  
Permitted: Yes  
Wet space: Yes  
Addition: No  
Conversion: No

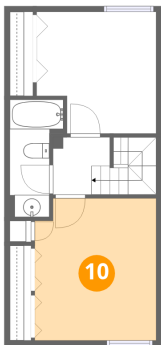
9 Floor 3 - Bedroom



Dimensions: 10'9" x 10'11"  
Area: 117 sq. ft  
Counted as living area: Yes

Heated: Yes  
Finished: Yes  
Enclosed: Yes  
Contiguous: Yes  
Permitted: Yes  
Wet space: No  
Addition: No  
Conversion: No

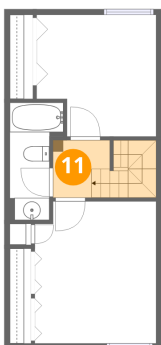
10 Floor 3 - Primary Bedroom



Dimensions: 10'11" x 12'9"  
Area: 139 sq. ft  
Counted as living area: Yes

Heated: Yes  
Finished: Yes  
Enclosed: Yes  
Contiguous: Yes  
Permitted: Yes  
Wet space: No  
Addition: No  
Conversion: No

11 Floor 3 - Hall

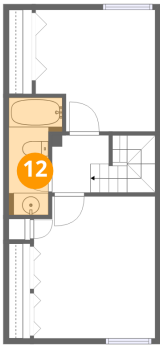


Dimensions: 3'5" x 5'2"  
Area: 18 sq. ft  
Counted as living area: Yes

Heated: Yes  
Finished: Yes  
Enclosed: Yes  
Contiguous: Yes  
Permitted: Yes  
Wet space: No  
Addition: No  
Conversion: No



12 Floor 3 - Bath



Dimensions: 4'9" x 10'6"  
Area: 50 sq. ft  
Counted as living area: Yes

Heated: Yes  
Finished: Yes  
Enclosed: Yes  
Contiguous: Yes  
Permitted: Yes  
Wet space: Yes  
Addition: No  
Conversion: No