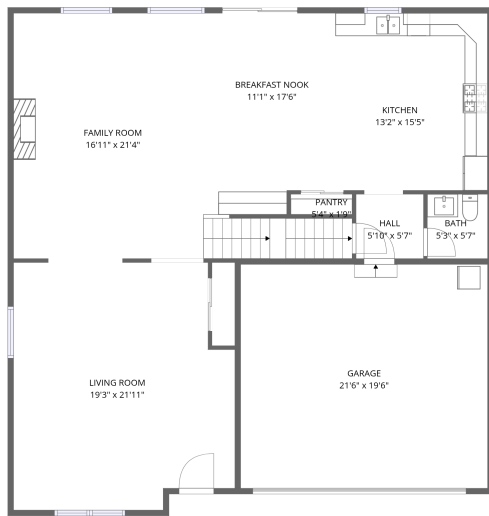
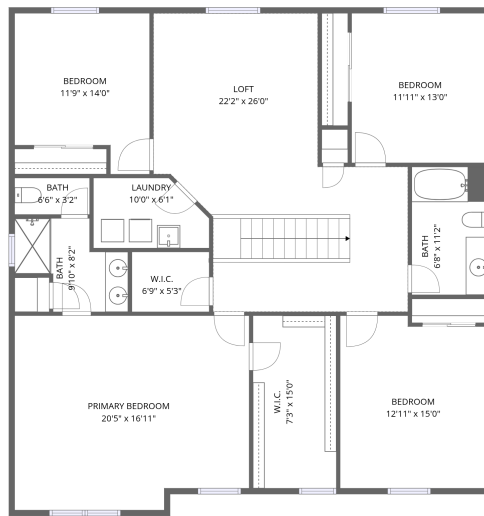


Home data report

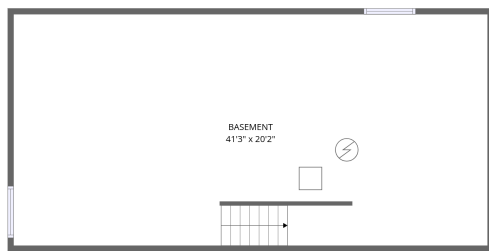
3799 Gardenia Drive, Elgin, Kane County, Illinois, United States, 60124



1st floor



2nd floor



Basement

Total Area: 3019 sq. ft

Basement: 0 sq. ft, 1st Floor: 1290 sq. ft, 2nd Floor: 1729 sq. ft

Excluded: Basement 830 sq. ft, Garage 418 sq. ft, Walls: 254 sq. ft

Property summary



Home data report

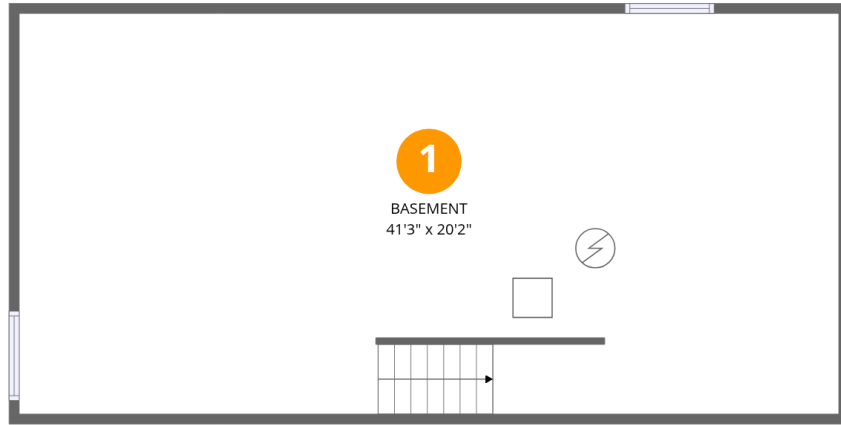
**3799 Gardenia Drive, Elgin, Kane County, Illinois, United States,
60124**

 **1**
Half baths

 **1**
Garages

Home data report

3799 Gardenia Drive, Elgin, Kane County, Illinois, United States, 60124



Room dimensions

Floor 1 Below grade

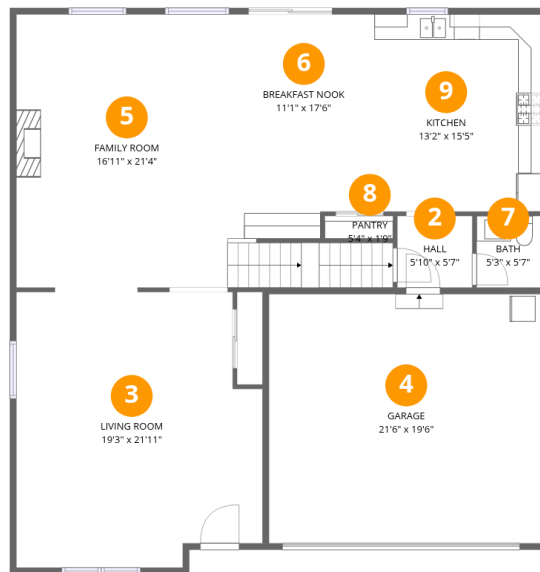
Total:0sqft

Excluded: 830sqft

#		Dimensions	sqft	Counted as living area
1	Basement	41'3" x 20'2"	830 sq. ft	No

Home data report

3799 Gardenia Drive, Elgin, Kane County, Illinois, United States, 60124



Room dimensions

Floor 2

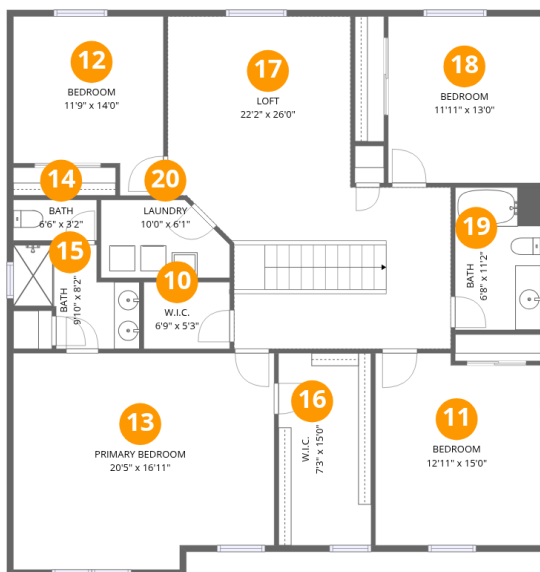
Total:1290sqft

Excluded: 418sqft

#		Dimensions	sqft	Counted as living area
2	Hall	5'10" x 5'7"	33 sq. ft	Yes
3	Living Room	19'3" x 21'11"	387 sq. ft	Yes
4	Garage	21'6" x 19'6"	418 sq. ft	No
5	Family Room	16'11" x 21'4"	361 sq. ft	Yes
6	Breakfast Nook	11'1" x 17'6"	230 sq. ft	Yes
7	Bath	5'3" x 5'7"	29 sq. ft	Yes
8	Pantry	5'4" x 1'9"	9 sq. ft	Yes
9	Kitchen	13'2" x 15'5"	204 sq. ft	Yes

Home data report

3799 Gardenia Drive, Elgin, Kane County, Illinois, United States, 60124



Room dimensions

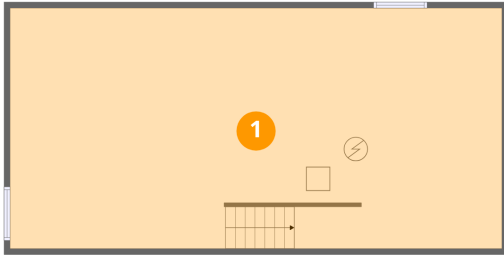
Floor 3

Total:1729sqft Excluded: 0sqft

#		Dimensions	sqft	Counted as living area
10	W.I.C.	6'9" x 5'3"	35 sq. ft	Yes
11	Bedroom	12'11" x 15'0"	187 sq. ft	Yes
12	Bedroom	11'9" x 14'0"	143 sq. ft	Yes
13	Primary Bedroom	20'5" x 16'11"	331 sq. ft	Yes
14	Bath	6'6" x 3'2"	21 sq. ft	Yes
15	Bath	9'10" x 8'2"	59 sq. ft	Yes
16	W.I.C.	7'3" x 15'0"	109 sq. ft	Yes
17	Loft	22'2" x 26'0"	415 sq. ft	Yes
18	Bedroom	11'11" x 13'0"	155 sq. ft	Yes
19	Bath	6'8" x 11'2"	75 sq. ft	Yes
20	Laundry	10'0" x 6'1"	55 sq. ft	Yes

3799 Gardenia Drive, Elgin, Kane County, Illinois, United States, 60124

1 Floor 1 - Basement



Dimensions: 41'3" x 20'2"
Area: 830 sq. ft
Counted as living area: No

Heated: Yes
Finished: No
Enclosed: Yes
Contiguous: Yes
Permitted: Yes
Wet space: No
Addition: No
Conversion: No

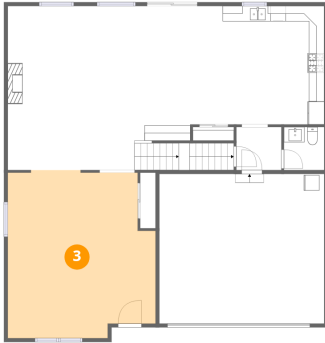
2 Floor 2 - Hall



Dimensions: 5'10" x 5'7"
Area: 33 sq. ft
Counted as living area: Yes

Heated: Yes
Finished: Yes
Enclosed: Yes
Contiguous: Yes
Permitted: Yes
Wet space: No
Addition: No
Conversion: No

3 Floor 2 - Living Room



Dimensions: 19'3" x 21'11"
Area: 387 sq. ft
Counted as living area: Yes

Heated: Yes
Finished: Yes
Enclosed: Yes
Contiguous: Yes
Permitted: Yes
Wet space: No
Addition: No
Conversion: No

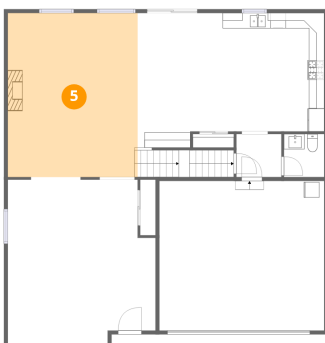
4 Floor 2 - Garage



Dimensions: 21'6" x 19'6"
Area: 418 sq. ft
Counted as living area: No

Heated: No
Finished: No
Enclosed: Yes
Contiguous: Yes
Permitted: Yes
Wet space: No
Addition: No
Conversion: No

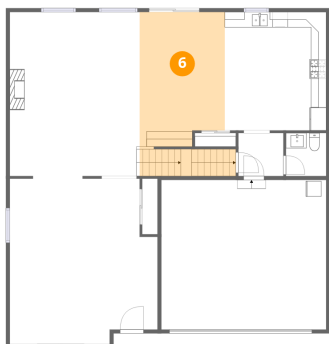
5 Floor 2 - Family Room



Dimensions: 16'11" x 21'4"
Area: 361 sq. ft
Counted as living area: Yes

Heated: Yes
Finished: Yes
Enclosed: Yes
Contiguous: Yes
Permitted: Yes
Wet space: No
Addition: No
Conversion: No

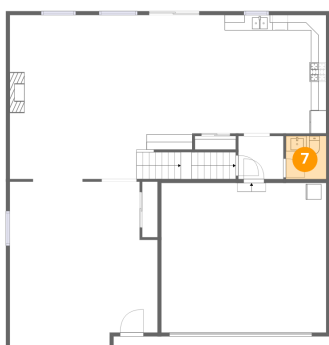
6 Floor 2 - Breakfast Nook



Dimensions: 11'1" x 17'6"
Area: 230 sq. ft
Counted as living area: Yes

Heated: Yes
Finished: Yes
Enclosed: Yes
Contiguous: Yes
Permitted: Yes
Wet space: No
Addition: No
Conversion: No

7 Floor 2 - Bath



Dimensions: 5'3" x 5'7"
Area: 29 sq. ft
Counted as living area: Yes

Heated: Yes
Finished: Yes
Enclosed: Yes
Contiguous: Yes
Permitted: Yes
Wet space: Yes
Addition: No
Conversion: No

8 Floor 2 - Pantry

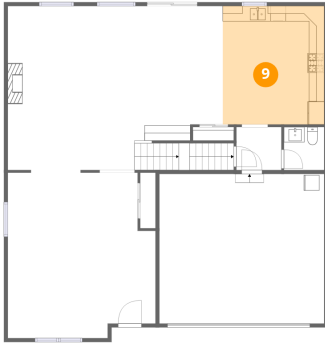


Dimensions: 5'4" x 1'9"
Area: 9 sq. ft
Counted as living area: Yes

Heated: Yes
Finished: Yes
Enclosed: Yes
Contiguous: Yes
Permitted: Yes
Wet space: No
Addition: No
Conversion: No

3799 Gardenia Drive, Elgin, Kane County, Illinois, United States, 60124

9 Floor 2 - Kitchen



Dimensions: 13'2" x 15'5"
Area: 204 sq. ft
Counted as living area: Yes

Heated: Yes
Finished: Yes
Enclosed: Yes
Contiguous: Yes
Permitted: Yes
Wet space: No
Addition: No
Conversion: No

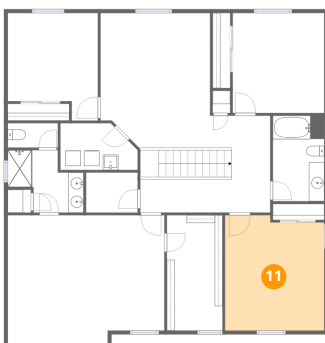
10 Floor 3 - W.I.C.



Dimensions: 6'9" x 5'3"
Area: 35 sq. ft
Counted as living area: Yes

Heated: Yes
Finished: Yes
Enclosed: Yes
Contiguous: Yes
Permitted: Yes
Wet space: No
Addition: No
Conversion: No

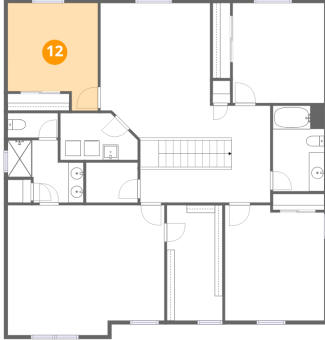
11 Floor 3 - Bedroom



Dimensions: 12'11" x 15'0"
Area: 187 sq. ft
Counted as living area: Yes

Heated: Yes
Finished: Yes
Enclosed: Yes
Contiguous: Yes
Permitted: Yes
Wet space: No
Addition: No
Conversion: No

12 Floor 3 - Bedroom



Dimensions: 11'9" x 14'0"
Area: 143 sq. ft
Counted as living area: Yes

Heated: Yes
Finished: Yes
Enclosed: Yes
Contiguous: Yes
Permitted: Yes
Wet space: No
Addition: No
Conversion: No

13 Floor 3 - Primary Bedroom



Dimensions: 20'5" x 16'11"
Area: 331 sq. ft
Counted as living area: Yes

Heated: Yes
Finished: Yes
Enclosed: Yes
Contiguous: Yes
Permitted: Yes
Wet space: No
Addition: No
Conversion: No

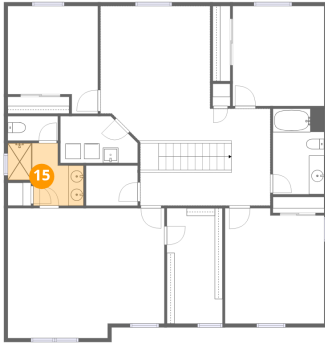
14 Floor 3 - Bath



Dimensions: 6'6" x 3'2"
Area: 21 sq. ft
Counted as living area: Yes

Heated: Yes
Finished: Yes
Enclosed: Yes
Contiguous: Yes
Permitted: Yes
Wet space: Yes
Addition: No
Conversion: No

15 Floor 3 - Bath



Dimensions: 9'10" x 8'2"
Area: 59 sq. ft
Counted as living area: Yes

Heated: Yes
Finished: Yes
Enclosed: Yes
Contiguous: Yes
Permitted: Yes
Wet space: Yes
Addition: No
Conversion: No

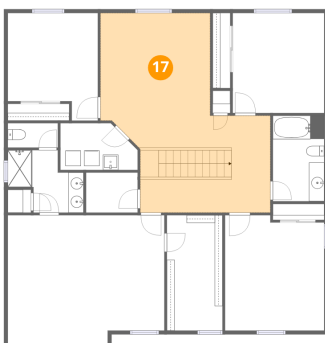
16 Floor 3 - W.I.C.



Dimensions: 7'3" x 15'0"
Area: 109 sq. ft
Counted as living area: Yes

Heated: Yes
Finished: Yes
Enclosed: Yes
Contiguous: Yes
Permitted: Yes
Wet space: No
Addition: No
Conversion: No

17 Floor 3 - Loft



Dimensions: 22'2" x 26'0"
Area: 415 sq. ft
Counted as living area: Yes

Heated: Yes
Finished: Yes
Enclosed: Yes
Contiguous: Yes
Permitted: Yes
Wet space: No
Addition: No
Conversion: No

18 Floor 3 - Bedroom



Dimensions: 11'11" x 13'0"
Area: 155 sq. ft
Counted as living area: Yes

Heated: Yes
Finished: Yes
Enclosed: Yes
Contiguous: Yes
Permitted: Yes
Wet space: No
Addition: No
Conversion: No

19 Floor 3 - Bath



Dimensions: 6'8" x 11'2"
Area: 75 sq. ft
Counted as living area: Yes

Heated: Yes
Finished: Yes
Enclosed: Yes
Contiguous: Yes
Permitted: Yes
Wet space: Yes
Addition: No
Conversion: No

20 Floor 3 - Laundry



Dimensions: 10'0" x 6'1"
Area: 55 sq. ft
Counted as living area: Yes

Heated: Yes
Finished: Yes
Enclosed: Yes
Contiguous: Yes
Permitted: Yes
Wet space: No
Addition: No
Conversion: No