



Total Area: 2601 sq. ft

Basement: 95 sq. ft, 1st Floor: 1141 sq. ft, 2nd Floor: 1365 sq. ft

Excluded: Storage 133 sq. ft, Basement 938 sq. ft, Garage 340 sq. ft, Deck 49 sq. ft, Open to below 25 sq. ft, Walls: 260 sq. ft


Property summary



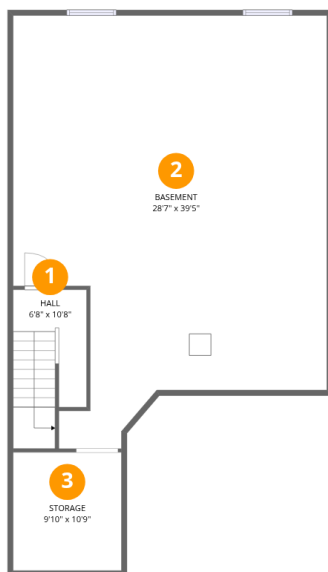
Home data report

**664 Baie-des-Castors Street, Orléans, Ontario,
Canada, K4A 1J4**



 **1**
Half baths

 **1**
Garages



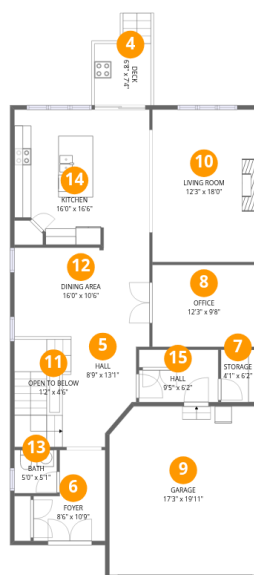
Room dimensions

Floor 1 Below grade

Total:95sqft

Excluded: 1046sqft

#		Dimensions	sqft	Counted as living area
1	Hall	6'8" x 10'8"	71 sq. ft	Yes
2	Basement	28'7" x 39'5"	1126 sq. ft	No
3	Storage	9'10" x 10'9"	106 sq. ft	No



Room dimensions

Floor 2

Total:1141sqft Excluded: 419sqft

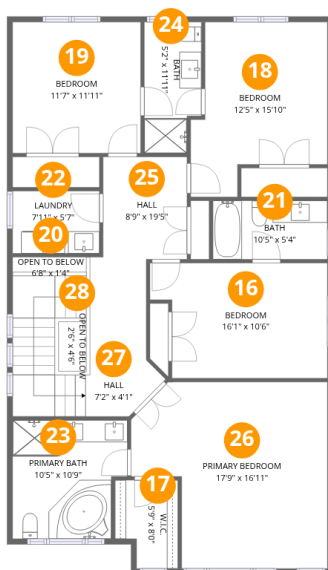
#		Dimensions	sqft	Counted as living area
4	Deck	6'8" x 7'4"	49 sq. ft	No
5	Hall	8'9" x 13'1"	114 sq. ft	Yes
6	Foyer	8'6" x 10'9"	91 sq. ft	Yes
7	Storage	4'1" x 6'2"	25 sq. ft	No
8	Office	12'3" x 9'8"	119 sq. ft	Yes
9	Garage	17'3" x 19'11"	344 sq. ft	No
10	Living Room	12'3" x 18'0"	220 sq. ft	Yes
11	Open To Below	1'2" x 4'6"	5 sq. ft	No
12	Dining Area	16'0" x 10'6"	168 sq. ft	Yes
13	Bath	5'0" x 5'1"	26 sq. ft	Yes
14	Kitchen	16'0" x 16'6"	264 sq. ft	Yes

Home data report

**664 Baie-des-Castors Street, Orléans, Ontario,
Canada, K4A 1J4**



#		Dimensions	sqft	Counted as living area
15	Hall	9'5" x 6'2"	58 sq. ft	Yes



Room dimensions

Floor 3

Total:1365sqft Excluded: 20sqft

#		Dimensions	sqft	Counted as living area
16	Bedroom	16'1" x 10'6"	168 sq. ft	Yes
17	W.I.C.	5'9" x 8'0"	46 sq. ft	Yes
18	Bedroom	12'5" x 15'10"	197 sq. ft	Yes
19	Bedroom	11'7" x 11'11"	138 sq. ft	Yes
20	Open To Below	6'8" x 1'4"	9 sq. ft	No
21	Bath	10'5" x 5'4"	55 sq. ft	Yes
22	Laundry	7'11" x 5'7"	44 sq. ft	Yes
23	Primary Bath	10'5" x 10'9"	112 sq. ft	Yes
24	Bath	5'2" x 11'11"	62 sq. ft	Yes
25	Hall	8'9" x 19'5"	171 sq. ft	Yes
26	Primary Bedroom	17'9" x 16'11"	300 sq. ft	Yes

Home data report

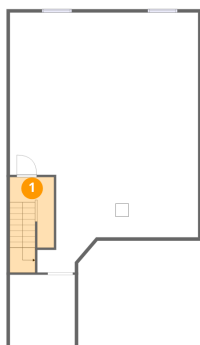
**664 Baie-des-Castors Street, Orléans, Ontario,
Canada, K4A 1J4**



#		Dimensions	sqft	Counted as living area
27	Hall	7'2" x 4'1"	29 sq. ft	Yes
28	Open To Below	2'6" x 4'6"	11 sq. ft	No



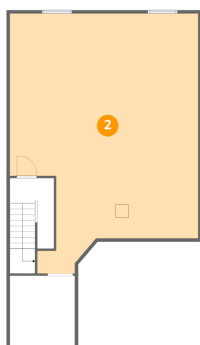
1 Floor 1 - Hall



Dimensions: 6'8" x 10'8"
Area: 71 sq. ft
Counted as living area: No

Heated: Yes
Finished: Yes
Enclosed: Yes
Contiguous: No
Permitted: Yes
Wet space: No
Addition: No
Conversion: No

2 Floor 1 - Basement

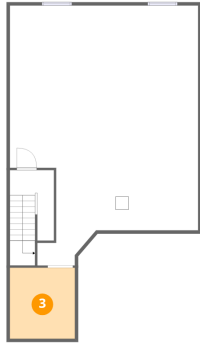


Dimensions: 28'7" x 39'5"
Area: 1126 sq. ft
Counted as living area: No

Heated: Yes
Finished: No
Enclosed: Yes
Contiguous: Yes
Permitted: Yes
Wet space: No
Addition: No
Conversion: No



3 Floor 1 - Storage



Dimensions: 9'10" x 10'9"
Area: 106 sq. ft
Counted as living area: No

Heated: No
Finished: No
Enclosed: No
Contiguous: Yes
Permitted: Yes
Wet space: No
Addition: No
Conversion: No

4 Floor 2 - Deck



Dimensions: 6'8" x 7'4"
Area: 49 sq. ft
Counted as living area: No

Heated: No
Finished: No
Enclosed: No
Contiguous: Yes
Permitted: Yes
Wet space: No
Addition: No
Conversion: No

5 Floor 2 - Hall



Dimensions: 8'9" x 13'1"
Area: 114 sq. ft
Counted as living area: Yes

Heated: Yes
Finished: Yes
Enclosed: Yes
Contiguous: Yes
Permitted: Yes
Wet space: No
Addition: No
Conversion: No



6 Floor 2 - Foyer



Dimensions: 8'6" x 10'9"
Area: 91 sq. ft
Counted as living area: Yes

Heated: Yes
Finished: Yes
Enclosed: Yes
Contiguous: Yes
Permitted: Yes
Wet space: No
Addition: No
Conversion: No

7 Floor 2 - Storage



Dimensions: 4'1" x 6'2"
Area: 25 sq. ft
Counted as living area: No

Heated: No
Finished: Yes
Enclosed: No
Contiguous: Yes
Permitted: Yes
Wet space: No
Addition: No
Conversion: No

8 Floor 2 - Office



Dimensions: 12'3" x 9'8"
Area: 119 sq. ft
Counted as living area: Yes

Heated: Yes
Finished: Yes
Enclosed: Yes
Contiguous: Yes
Permitted: Yes
Wet space: No
Addition: No
Conversion: No



9 Floor 2 - Garage



Dimensions: 17'3" x 19'11"
Area: 344 sq. ft
Counted as living area: No

Heated: No
Finished: No
Enclosed: Yes
Contiguous: Yes
Permitted: Yes
Wet space: No
Addition: No
Conversion: No

10 Floor 2 - Living Room



Dimensions: 12'3" x 18'0"
Area: 220 sq. ft
Counted as living area: Yes

Heated: Yes
Finished: Yes
Enclosed: Yes
Contiguous: Yes
Permitted: Yes
Wet space: No
Addition: No
Conversion: No

11 Floor 2 - Open To Below



Dimensions: 1'2" x 4'6"
Area: 5 sq. ft
Counted as living area: No

Heated: No
Finished: No
Enclosed: No
Contiguous: Yes
Permitted: No
Wet space: No
Addition: No
Conversion: No



12 Floor 2 - Dining Area



Dimensions: 16'0" x 10'6"
Area: 168 sq. ft
Counted as living area: Yes

Heated: Yes
Finished: Yes
Enclosed: Yes
Contiguous: Yes
Permitted: Yes
Wet space: No
Addition: No
Conversion: No

13 Floor 2 - Bath



Dimensions: 5'0" x 5'1"
Area: 26 sq. ft
Counted as living area: Yes

Heated: Yes
Finished: Yes
Enclosed: Yes
Contiguous: Yes
Permitted: Yes
Wet space: Yes
Addition: No
Conversion: No

14 Floor 2 - Kitchen



Dimensions: 16'0" x 16'6"
Area: 264 sq. ft
Counted as living area: Yes

Heated: Yes
Finished: Yes
Enclosed: Yes
Contiguous: Yes
Permitted: Yes
Wet space: No
Addition: No
Conversion: No



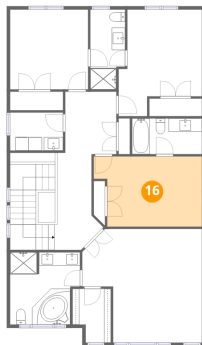
15 Floor 2 - Hall



Dimensions: 9'5" x 6'2"
Area: 58 sq. ft
Counted as living area: Yes

Heated: Yes
Finished: Yes
Enclosed: Yes
Contiguous: Yes
Permitted: Yes
Wet space: No
Addition: No
Conversion: No

16 Floor 3 - Bedroom



Dimensions: 16'1" x 10'6"
Area: 168 sq. ft
Counted as living area: Yes

Heated: Yes
Finished: Yes
Enclosed: Yes
Contiguous: Yes
Permitted: Yes
Wet space: No
Addition: No
Conversion: No

17 Floor 3 - W.I.C.



Dimensions: 5'9" x 8'0"
Area: 46 sq. ft
Counted as living area: Yes

Heated: Yes
Finished: Yes
Enclosed: Yes
Contiguous: Yes
Permitted: Yes
Wet space: No
Addition: No
Conversion: No



18 Floor 3 - Bedroom



Dimensions: 12'5" x 15'10"
Area: 197 sq. ft
Counted as living area: Yes

Heated: Yes
Finished: Yes
Enclosed: Yes
Contiguous: Yes
Permitted: Yes
Wet space: No
Addition: No
Conversion: No

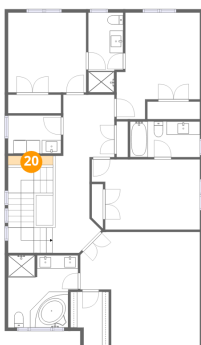
19 Floor 3 - Bedroom



Dimensions: 11'7" x 11'11"
Area: 138 sq. ft
Counted as living area: Yes

Heated: Yes
Finished: Yes
Enclosed: Yes
Contiguous: Yes
Permitted: Yes
Wet space: No
Addition: No
Conversion: No

20 Floor 3 - Open To Below



Dimensions: 6'8" x 1'4"
Area: 9 sq. ft
Counted as living area: No

Heated: No
Finished: No
Enclosed: No
Contiguous: Yes
Permitted: No
Wet space: No
Addition: No
Conversion: No



21 Floor 3 - Bath



Dimensions: 10'5" x 5'4"
Area: 55 sq. ft
Counted as living area: Yes

Heated: Yes
Finished: Yes
Enclosed: Yes
Contiguous: Yes
Permitted: Yes
Wet space: Yes
Addition: No
Conversion: No

22 Floor 3 - Laundry



Dimensions: 7'11" x 5'7"
Area: 44 sq. ft
Counted as living area: Yes

Heated: Yes
Finished: Yes
Enclosed: Yes
Contiguous: Yes
Permitted: Yes
Wet space: No
Addition: No
Conversion: No

23 Floor 3 - Primary Bath

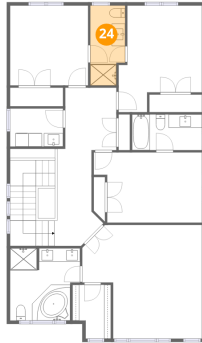


Dimensions: 10'5" x 10'9"
Area: 112 sq. ft
Counted as living area: Yes

Heated: Yes
Finished: Yes
Enclosed: Yes
Contiguous: Yes
Permitted: Yes
Wet space: Yes
Addition: No
Conversion: No



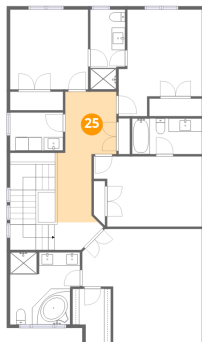
24 Floor 3 - Bath



Dimensions: 5'2" x 11'11"
Area: 62 sq. ft
Counted as living area: Yes

Heated: Yes
Finished: Yes
Enclosed: Yes
Contiguous: Yes
Permitted: Yes
Wet space: Yes
Addition: No
Conversion: No

25 Floor 3 - Hall



Dimensions: 8'9" x 19'5"
Area: 171 sq. ft
Counted as living area: Yes

Heated: Yes
Finished: Yes
Enclosed: Yes
Contiguous: Yes
Permitted: Yes
Wet space: No
Addition: No
Conversion: No

26 Floor 3 - Primary Bedroom



Dimensions: 17'9" x 16'11"
Area: 300 sq. ft
Counted as living area: Yes

Heated: Yes
Finished: Yes
Enclosed: Yes
Contiguous: Yes
Permitted: Yes
Wet space: No
Addition: No
Conversion: No



27 Floor 3 - Hall



Dimensions: 7'2" x 4'1"
Area: 29 sq. ft
Counted as living area: Yes

Heated: Yes
Finished: Yes
Enclosed: Yes
Contiguous: Yes
Permitted: Yes
Wet space: No
Addition: No
Conversion: No

28 Floor 3 - Open To Below



Dimensions: 2'6" x 4'6"
Area: 11 sq. ft
Counted as living area: No

Heated: No
Finished: No
Enclosed: No
Contiguous: Yes
Permitted: No
Wet space: No
Addition: No
Conversion: No