

Home data report

57 Prince St, Cannington, ON, CA



Total Area: 2236 sq. ft

Basement: 578 sq. ft, 1st Floor: 1658 sq. ft, 2nd Floor: 0 sq. ft

Excluded: Storage 170 sq. ft, Screened porch 186 sq. ft, Porch 51 sq. ft, Undefined 9 sq. ft, Garage 362 sq. ft, Walls: 239 sq. ft

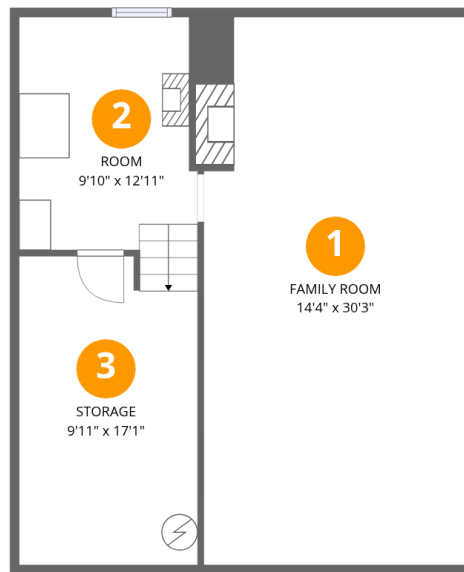
Property summary

3 Floors

3 Bedrooms

2 Bathrooms

1 Garages



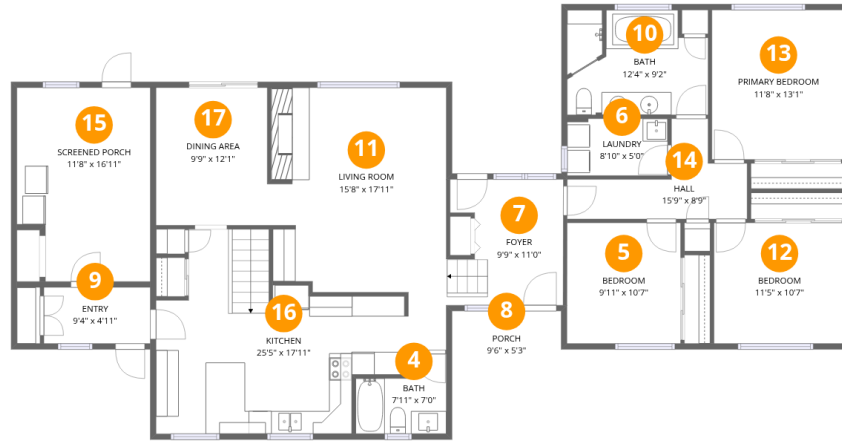
Room dimensions

Floor 1 Below grade

Total: 578 sqft

Excluded: 170 sqft

#		Dimensions	sqft	Counted as living area
1	Family Room	14'4" x 30'3"	433 sq. ft	Yes
2	Room	9'10" x 12'11"	127 sq. ft	Yes
3	Storage	9'11" x 17'1"	169 sq. ft	No



Room dimensions

Floor 2

Total: 1658sqft

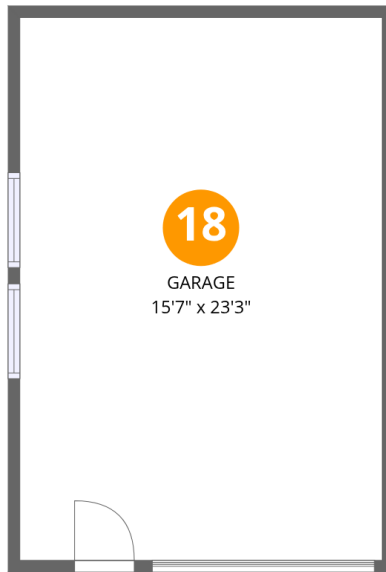
Excluded: 246sqft

#		Dimensions	sqft	Counted as living area
4	Bath	7'11" x 7'0"	56 sq. ft	Yes
5	Bedroom	9'11" x 10'7"	105 sq. ft	Yes
6	Laundry	8'10" x 5'0"	44 sq. ft	Yes
7	Foyer	9'9" x 11'0"	107 sq. ft	Yes
8	Porch	9'6" x 5'3"	50 sq. ft	No
9	Entry	9'4" x 4'11"	46 sq. ft	Yes
10	Bath	12'4" x 9'2"	113 sq. ft	Yes
11	Living Room	15'8" x 17'11"	281 sq. ft	Yes
12	Bedroom	11'5" x 10'7"	121 sq. ft	Yes
13	Primary Bedroom	11'8" x 13'1"	153 sq. ft	Yes
14	Hall	15'9" x 8'9"	138 sq. ft	Yes

Home data report

57 Prince St,Cannington,ON,CA

#		Dimensions	sqft	Counted as living area
15	Screened Porch	11'8" x 16'11"	197 sq. ft	No
16	Kitchen	25'5" x 17'11"	455 sq. ft	Yes
17	Dining Area	9'9" x 12'1"	118 sq. ft	Yes



Room dimensions

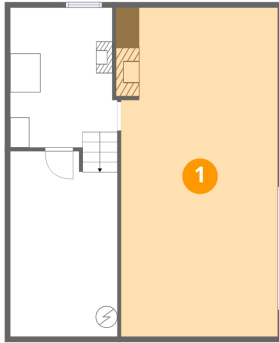
Floor 3

Total: 0sqft

Excluded: 362sqft

#		Dimensions	sqft	Counted as living area
18	Garage	15'7" x 23'3"	362 sq. ft	No

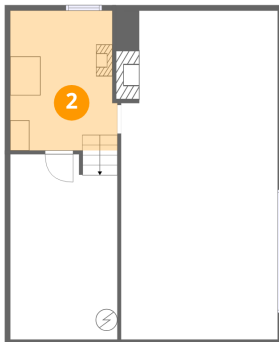
1 Floor 1 - Family Room



Dimensions: 14'4" x 30'3"
Area: 433 sq. ft
Counted as living area: No

Heated: Yes
Finished: Yes
Enclosed: Yes
Contiguous: No
Permitted: Yes
Wet space: No
Addition: No
Conversion: No

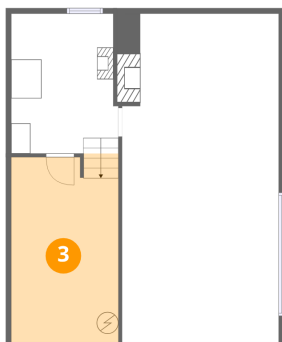
2 Floor 1 - Room



Dimensions: 9'10" x 12'11"
Area: 127 sq. ft
Counted as living area: No

Heated: Yes
Finished: Yes
Enclosed: Yes
Contiguous: No
Permitted: Yes
Wet space: No
Addition: No
Conversion: No

3 Floor 1 - Storage



Dimensions: 9'11" x 17'1"
Area: 169 sq. ft
Counted as living area: No

Heated: No
Finished: No
Enclosed: No
Contiguous: Yes
Permitted: Yes
Wet space: No
Addition: No
Conversion: No

4 Floor 2 - Bath



Dimensions: 7'11" x 7'0"
Area: 56 sq. ft
Counted as living area: Yes

Heated: Yes
Finished: Yes
Enclosed: Yes
Contiguous: Yes
Permitted: Yes
Wet space: Yes
Addition: No
Conversion: No

5 Floor 2 - Bedroom



Dimensions: 9'11" x 10'7"
Area: 105 sq. ft
Counted as living area: Yes

Heated: Yes
Finished: Yes
Enclosed: Yes
Contiguous: Yes
Permitted: Yes
Wet space: No
Addition: No
Conversion: No

6 Floor 2 - Laundry



Dimensions: 8'10" x 5'0"
Area: 44 sq. ft
Counted as living area: Yes

Heated: Yes
Finished: Yes
Enclosed: Yes
Contiguous: Yes
Permitted: Yes
Wet space: No
Addition: No
Conversion: No

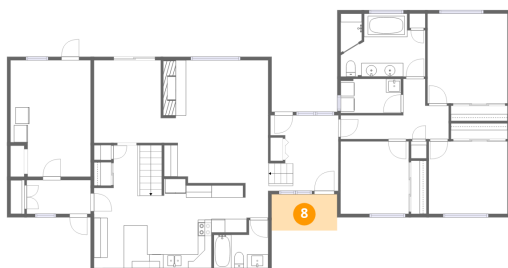
7 Floor 2 - Foyer



Dimensions: 9'9" x 11'0"
Area: 107 sq. ft
Counted as living area: Yes

Heated: Yes
Finished: Yes
Enclosed: Yes
Contiguous: Yes
Permitted: Yes
Wet space: No
Addition: No
Conversion: No

8 Floor 2 - Porch



Dimensions: 9'6" x 5'3"
Area: 50 sq. ft
Counted as living area: No

Heated: No
Finished: No
Enclosed: No
Contiguous: Yes
Permitted: Yes
Wet space: No
Addition: No
Conversion: No

9 Floor 2 - Entry



Dimensions: 9'4" x 4'11"
Area: 46 sq. ft
Counted as living area: Yes

Heated: Yes
Finished: Yes
Enclosed: Yes
Contiguous: Yes
Permitted: Yes
Wet space: No
Addition: No
Conversion: No

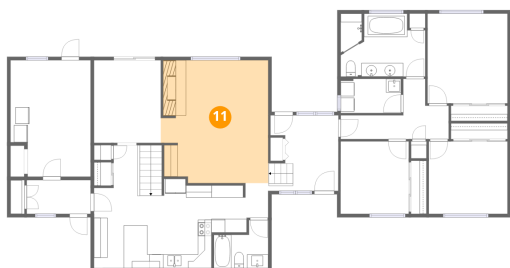
10 Floor 2 - Bath



Dimensions: 12'4" x 9'2"
Area: 113 sq. ft
Counted as living area: Yes

Heated: Yes
Finished: Yes
Enclosed: Yes
Contiguous: Yes
Permitted: Yes
Wet space: Yes
Addition: No
Conversion: No

11 Floor 2 - Living Room



Dimensions: 15'8" x 17'11"
Area: 281 sq. ft
Counted as living area: Yes

Heated: Yes
Finished: Yes
Enclosed: Yes
Contiguous: Yes
Permitted: Yes
Wet space: No
Addition: No
Conversion: No

12 Floor 2 - Bedroom



Dimensions: 11'5" x 10'7"
Area: 121 sq. ft
Counted as living area: Yes

Heated: Yes
Finished: Yes
Enclosed: Yes
Contiguous: Yes
Permitted: Yes
Wet space: No
Addition: No
Conversion: No

13 Floor 2 - Primary Bedroom



Dimensions: 11'8" x 13'1"
Area: 153 sq. ft
Counted as living area: Yes

Heated: Yes
Finished: Yes
Enclosed: Yes
Contiguous: Yes
Permitted: Yes
Wet space: No
Addition: No
Conversion: No

14 Floor 2 - Hall



Dimensions: 15'9" x 8'9"
Area: 138 sq. ft
Counted as living area: Yes

Heated: Yes
Finished: Yes
Enclosed: Yes
Contiguous: Yes
Permitted: Yes
Wet space: No
Addition: No
Conversion: No

15 Floor 2 - Screened Porch



Dimensions: 11'8" x 16'11"

Area: 197 sq. ft

Counted as living area: No

Heated: No

Finished: No

Enclosed: No

Contiguous: Yes

Permitted: Yes

Wet space: No

Addition: No

Conversion: No

16 Floor 2 - Kitchen



Dimensions: 25'5" x 17'11"

Area: 455 sq. ft

Counted as living area: Yes

Heated: Yes

Finished: Yes

Enclosed: Yes

Contiguous: Yes

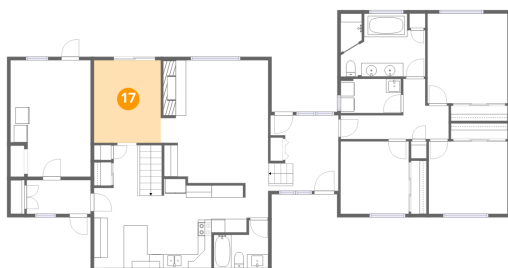
Permitted: Yes

Wet space: No

Addition: No

Conversion: No

17 Floor 2 - Dining Area



Dimensions: 9'9" x 12'1"

Area: 118 sq. ft

Counted as living area: Yes

Heated: Yes

Finished: Yes

Enclosed: Yes

Contiguous: Yes

Permitted: Yes

Wet space: No

Addition: No

Conversion: No

18 Floor 3 - Garage



Dimensions: 15'7" x 23'3"
Area: 362 sq. ft
Counted as living area: No

Heated: No
Finished: No
Enclosed: Yes
Contiguous: Yes
Permitted: Yes
Wet space: No
Addition: No
Conversion: No