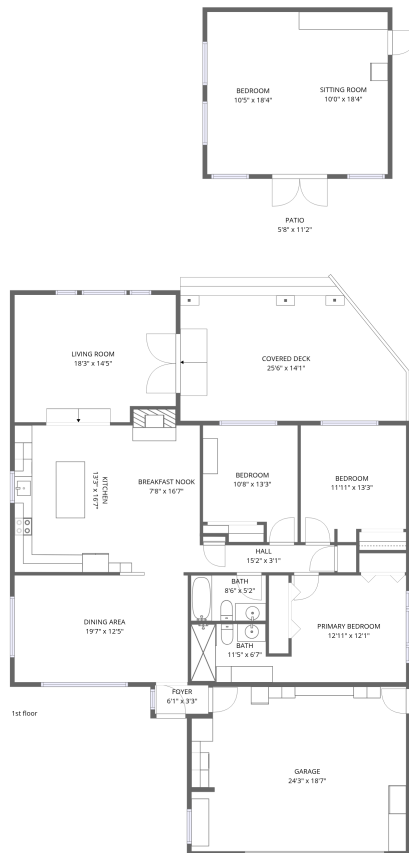


Home data report

4535 Cayucos Ave, Atascadero, CA, US




Total Area: 1951 sq. ft

1st Floor: 1951 sq. ft

Excluded: Garage 441 sq. ft, Covered deck 365 sq. ft, Patio 63 sq. ft, Walls: 163 sq. ft

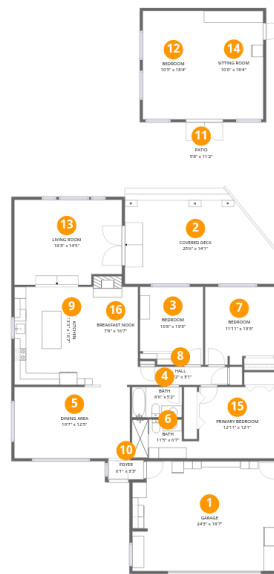
Property summary

 **1** Floors

 **4** Bedrooms

 **2** Bathrooms

 **1** Garages



Room dimensions

Floor 1

Total: 1951 sqft

Excluded: 869 sqft

#		Dimensions	sqft	Counted as living area
1	Garage	24'3" x 18'7"	451 sq. ft	No
2	Covered Deck	25'6" x 14'1"	360 sq. ft	No
3	Bedroom	10'8" x 13'3"	141 sq. ft	Yes
4	Bath	8'6" x 5'2"	44 sq. ft	Yes
5	Dining Area	19'7" x 12'5"	243 sq. ft	Yes
6	Bath	11'5" x 6'7"	75 sq. ft	Yes
7	Bedroom	11'11" x 13'3"	157 sq. ft	Yes
8	Hall	15'2" x 3'1"	46 sq. ft	Yes
9	Kitchen	13'3" x 16'7"	220 sq. ft	Yes
10	Foyer	6'1" x 3'3"	20 sq. ft	Yes
11	Patio	5'8" x 11'2"	63 sq. ft	No

Home data report

4535 Cayucos Ave, Atascadero, CA, US

#		Dimensions	sqft	Counted as living area
12	Bedroom	10'5" x 18'4"	191 sq. ft	Yes
13	Living Room	18'3" x 14'5"	262 sq. ft	Yes
14	Sitting Room	10'0" x 18'4"	184 sq. ft	Yes
15	Primary Bedroom	12'11" x 12'1"	157 sq. ft	Yes
16	Breakfast Nook	7'8" x 16'7"	127 sq. ft	Yes

1 Floor 1 - Garage



Dimensions: 24'3" x 18'7"
Area: 451 sq. ft
Counted as living area: No

Heated: No
Finished: No
Enclosed: Yes
Contiguous: Yes
Permitted: Yes
Wet space: No
Addition: No
Conversion: No

2 Floor 1 - Covered Deck



Dimensions: 25'6" x 14'1"
Area: 360 sq. ft
Counted as living area: No

Heated: No
Finished: No
Enclosed: No
Contiguous: Yes
Permitted: Yes
Wet space: No
Addition: No
Conversion: No

3 Floor 1 - Bedroom



Dimensions: 10'8" x 13'3"
Area: 141 sq. ft
Counted as living area: Yes

Heated: Yes
Finished: Yes
Enclosed: Yes
Contiguous: Yes
Permitted: Yes
Wet space: No
Addition: No
Conversion: No

4 Floor 1 - Bath



Dimensions: 8'6" x 5'2"
Area: 44 sq. ft
Counted as living area: Yes

Heated: Yes
Finished: Yes
Enclosed: Yes
Contiguous: Yes
Permitted: Yes
Wet space: Yes
Addition: No
Conversion: No

5 Floor 1 - Dining Area



Dimensions: 19'7" x 12'5"
Area: 243 sq. ft
Counted as living area: Yes

Heated: Yes
Finished: Yes
Enclosed: Yes
Contiguous: Yes
Permitted: Yes
Wet space: No
Addition: No
Conversion: No

6 Floor 1 - Bath



Dimensions: 11'5" x 6'7"
Area: 75 sq. ft
Counted as living area: Yes

Heated: Yes
Finished: Yes
Enclosed: Yes
Contiguous: Yes
Permitted: Yes
Wet space: Yes
Addition: No
Conversion: No

7 Floor 1 - Bedroom



Dimensions: 11'11" x 13'3"
Area: 157 sq. ft
Counted as living area: Yes

Heated: Yes
Finished: Yes
Enclosed: Yes
Contiguous: Yes
Permitted: Yes
Wet space: No
Addition: No
Conversion: No

8 Floor 1 - Hall



Dimensions: 15'2" x 3'1"
Area: 46 sq. ft
Counted as living area: Yes

Heated: Yes
Finished: Yes
Enclosed: Yes
Contiguous: Yes
Permitted: Yes
Wet space: No
Addition: No
Conversion: No

9 Floor 1 - Kitchen



Dimensions: 13'3" x 16'7"
Area: 220 sq. ft
Counted as living area: Yes

Heated: Yes
Finished: Yes
Enclosed: Yes
Contiguous: Yes
Permitted: Yes
Wet space: No
Addition: No
Conversion: No

10 Floor 1 - Foyer



Dimensions: 6'1" x 3'3"
Area: 20 sq. ft
Counted as living area: Yes

Heated: Yes
Finished: Yes
Enclosed: Yes
Contiguous: Yes
Permitted: Yes
Wet space: No
Addition: No
Conversion: No

11 Floor 1 - Patio



Dimensions: 5'8" x 11'2"
Area: 63 sq. ft
Counted as living area: No

Heated: No
Finished: No
Enclosed: No
Contiguous: Yes
Permitted: Yes
Wet space: No
Addition: No
Conversion: No

12 Floor 1 - Bedroom



Dimensions: 10'5" x 18'4"
Area: 191 sq. ft
Counted as living area: Yes

Heated: Yes
Finished: Yes
Enclosed: Yes
Contiguous: Yes
Permitted: Yes
Wet space: No
Addition: No
Conversion: No

13 Floor 1 - Living Room



Dimensions: 18'3" x 14'5"
Area: 262 sq. ft
Counted as living area: Yes

Heated: Yes
Finished: Yes
Enclosed: Yes
Contiguous: Yes
Permitted: Yes
Wet space: No
Addition: No
Conversion: No

14 Floor 1 - Sitting Room



Dimensions: 10'0" x 18'4"
Area: 184 sq. ft
Counted as living area: Yes

Heated: Yes
Finished: Yes
Enclosed: Yes
Contiguous: Yes
Permitted: Yes
Wet space: No
Addition: No
Conversion: No

15 Floor 1 - Primary Bedroom



Dimensions: 12'11" x 12'1"
Area: 157 sq. ft
Counted as living area: Yes

Heated: Yes
Finished: Yes
Enclosed: Yes
Contiguous: Yes
Permitted: Yes
Wet space: No
Addition: No
Conversion: No

16 Floor 1 - Breakfast Nook



Dimensions: 7'8" x 16'7"
Area: 127 sq. ft
Counted as living area: Yes

Heated: Yes
Finished: Yes
Enclosed: Yes
Contiguous: Yes
Permitted: Yes
Wet space: No
Addition: No
Conversion: No