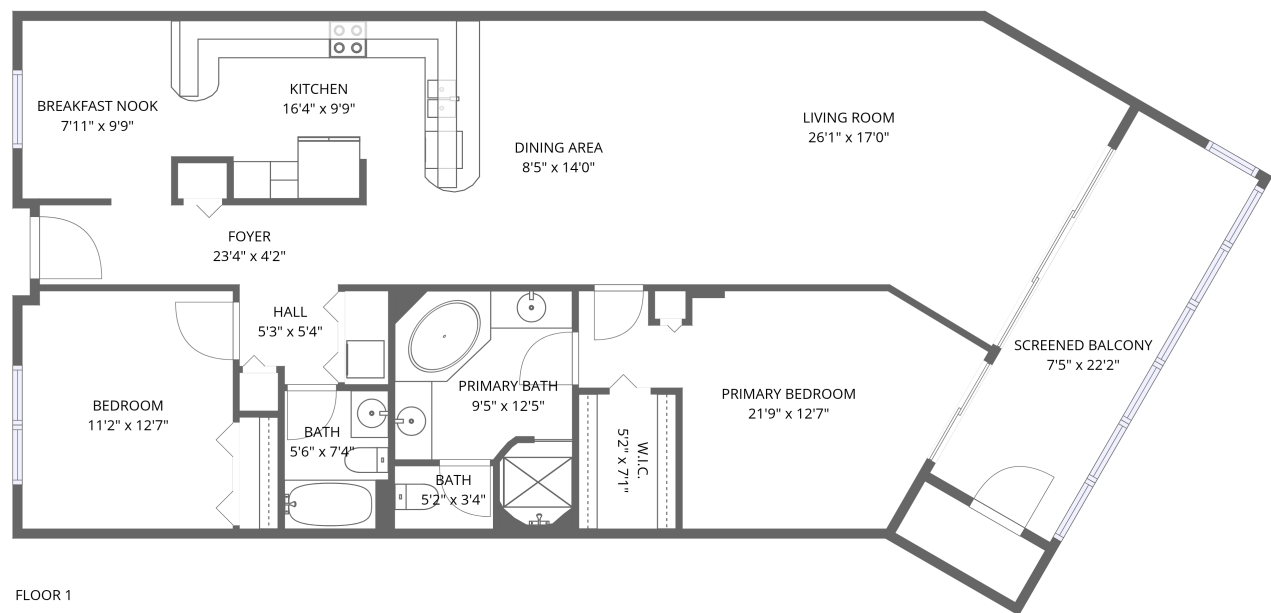


Home data report

6650 Sunset Way, Downtown St. Pete Beach, St. Pete Beach,  
Pinellas County, Florida, United States, 33706, 204




Total Area: 1416 sq. ft


Floor 1: 1416 sq. ft

Excluded: Undefined 23 sq. ft, Screened balcony 164 sq. ft, Walls: 0 sq. ft

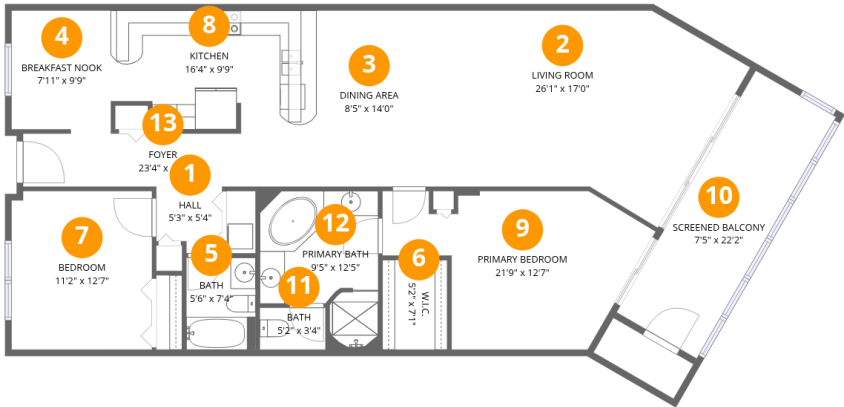
Property summary

 1 Floors

 2 Bedrooms

 2 Bathrooms

6650 Sunset Way, Downtown St. Pete Beach, St. Pete Beach, Pinellas County, Florida, United States, 33706, 204



Room dimensions

Floor 1 Total:1416sqft    Excluded: 187sqft

#		Dimensions	sqft	Counted as living area
1	Hall	5'3" x 5'4"	25 sq. ft	Yes
2	Living Room	26'1" x 17'0"	334 sq. ft	Yes
3	Dining Area	8'5" x 14'0"	117 sq. ft	Yes
4	Breakfast Nook	7'11" x 9'9"	76 sq. ft	Yes
5	Bath	5'6" x 7'4"	40 sq. ft	Yes
6	W.I.C.	5'2" x 7'1"	37 sq. ft	Yes
7	Bedroom	11'2" x 12'7"	140 sq. ft	Yes
8	Kitchen	16'4" x 9'9"	148 sq. ft	Yes
9	Primary Bedroom	21'9" x 12'7"	195 sq. ft	Yes
10	Screened Balcony	7'5" x 22'2"	164 sq. ft	No
11	Bath	5'2" x 3'4"	17 sq. ft	Yes

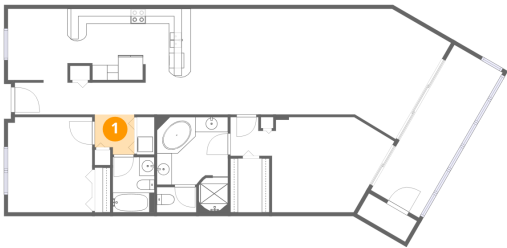
Home data report

6650 Sunset Way, Downtown St. Pete Beach, St. Pete Beach,  
Pinellas County, Florida, United States, 33706, 204

#		Dimensions	sqft	Counted as living area
12	Primary Bath	9'5" x 12'5"	98 sq. ft	Yes
13	Foyer	23'4" x 4'2"	98 sq. ft	Yes

6650 Sunset Way, Downtown St. Pete Beach, St. Pete Beach,  
Pinellas County, Florida, United States, 33706, 204

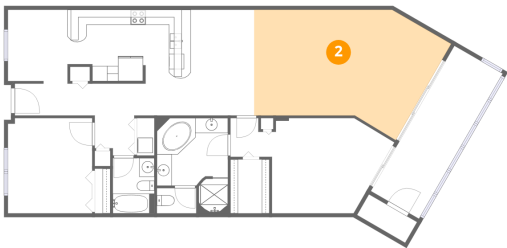
1 Floor 1 - Hall



Dimensions: 5'3" x 5'4"  
Area: 25 sq. ft  
Counted as living area: Yes

Heated: Yes  
Finished: Yes  
Enclosed: Yes  
Contiguous: Yes  
Permitted: Yes  
Wet space: No  
Addition: No  
Conversion: No

2 Floor 1 - Living Room

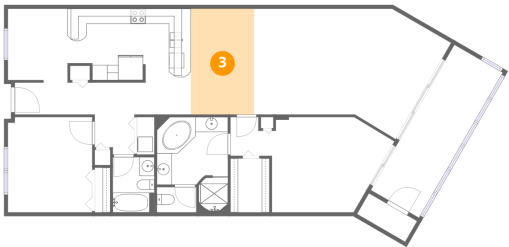


Dimensions: 26'1" x 17'0"  
Area: 334 sq. ft  
Counted as living area: Yes

Heated: Yes  
Finished: Yes  
Enclosed: Yes  
Contiguous: Yes  
Permitted: Yes  
Wet space: No  
Addition: No  
Conversion: No

6650 Sunset Way, Downtown St. Pete Beach, St. Pete Beach,  
Pinellas County, Florida, United States, 33706, 204

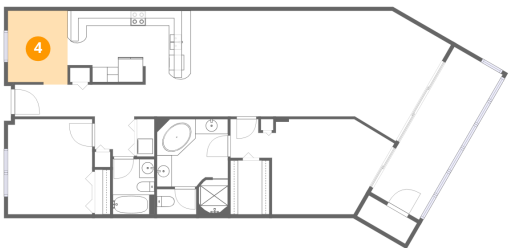
3 Floor 1 - Dining Area



Dimensions: 8'5" x 14'0"  
Area: 117 sq. ft  
Counted as living area: Yes

Heated: Yes  
Finished: Yes  
Enclosed: Yes  
Contiguous: Yes  
Permitted: Yes  
Wet space: No  
Addition: No  
Conversion: No

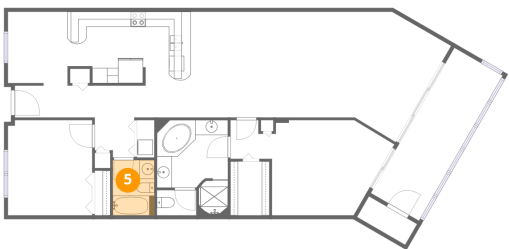
4 Floor 1 - Breakfast Nook



Dimensions: 7'11" x 9'9"  
Area: 76 sq. ft  
Counted as living area: Yes

Heated: Yes  
Finished: Yes  
Enclosed: Yes  
Contiguous: Yes  
Permitted: Yes  
Wet space: No  
Addition: No  
Conversion: No

5 Floor 1 - Bath

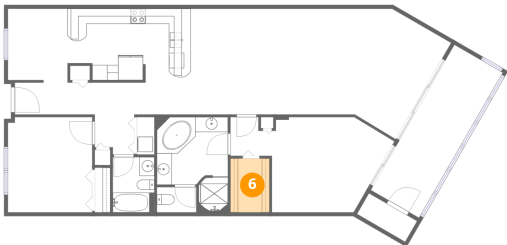


Dimensions: 5'6" x 7'4"  
Area: 40 sq. ft  
Counted as living area: Yes

Heated: Yes  
Finished: Yes  
Enclosed: Yes  
Contiguous: Yes  
Permitted: Yes  
Wet space: Yes  
Addition: No  
Conversion: No

6650 Sunset Way, Downtown St. Pete Beach, St. Pete Beach,  
Pinellas County, Florida, United States, 33706, 204

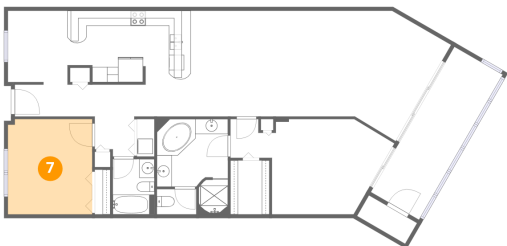
6 Floor 1 - W.I.C.



Dimensions: 5'2" x 7'1"  
Area: 37 sq. ft  
Counted as living area: Yes

Heated: Yes  
Finished: Yes  
Enclosed: Yes  
Contiguous: Yes  
Permitted: Yes  
Wet space: No  
Addition: No  
Conversion: No

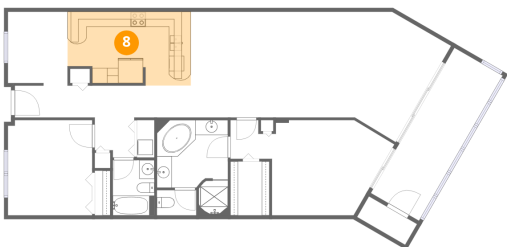
7 Floor 1 - Bedroom



Dimensions: 11'2" x 12'7"  
Area: 140 sq. ft  
Counted as living area: Yes

Heated: Yes  
Finished: Yes  
Enclosed: Yes  
Contiguous: Yes  
Permitted: Yes  
Wet space: No  
Addition: No  
Conversion: No

8 Floor 1 - Kitchen

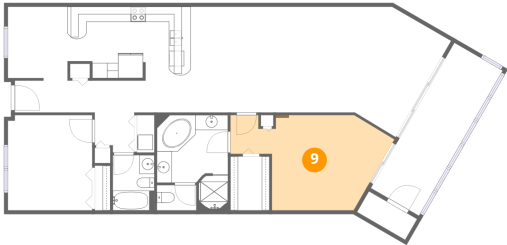


Dimensions: 16'4" x 9'9"  
Area: 148 sq. ft  
Counted as living area: Yes

Heated: Yes  
Finished: Yes  
Enclosed: Yes  
Contiguous: Yes  
Permitted: Yes  
Wet space: No  
Addition: No  
Conversion: No

6650 Sunset Way, Downtown St. Pete Beach, St. Pete Beach,  
Pinellas County, Florida, United States, 33706, 204

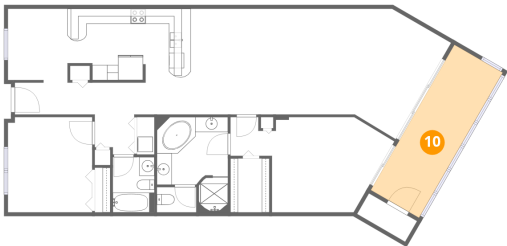
9 Floor 1 - Primary Bedroom



Dimensions: 21'9" x 12'7"  
Area: 195 sq. ft  
Counted as living area: Yes

Heated: Yes  
Finished: Yes  
Enclosed: Yes  
Contiguous: Yes  
Permitted: Yes  
Wet space: No  
Addition: No  
Conversion: No

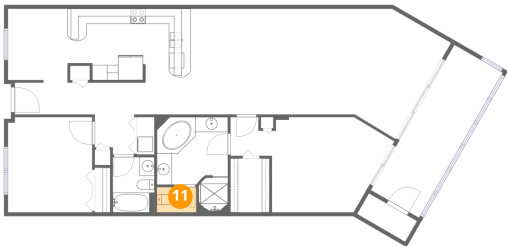
10 Floor 1 - Screened Balcony



Dimensions: 7'5" x 22'2"  
Area: 164 sq. ft  
Counted as living area: No

Heated: No  
Finished: No  
Enclosed: No  
Contiguous: Yes  
Permitted: Yes  
Wet space: No  
Addition: No  
Conversion: No

11 Floor 1 - Bath

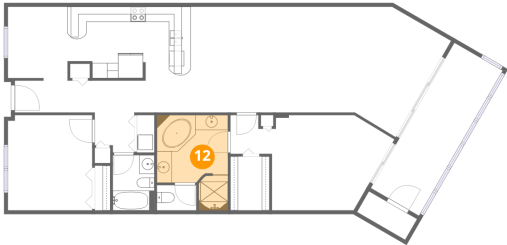


Dimensions: 5'2" x 3'4"  
Area: 17 sq. ft  
Counted as living area: Yes

Heated: Yes  
Finished: Yes  
Enclosed: Yes  
Contiguous: Yes  
Permitted: Yes  
Wet space: Yes  
Addition: No  
Conversion: No

6650 Sunset Way, Downtown St. Pete Beach, St. Pete Beach,  
Pinellas County, Florida, United States, 33706, 204

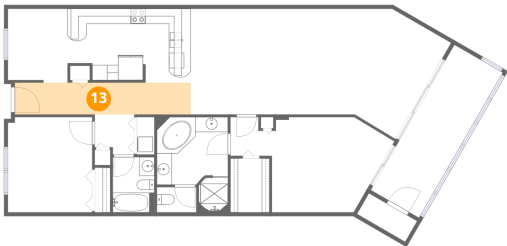
12 Floor 1 - Primary Bath



Dimensions: 9'5" x 12'5"  
Area: 98 sq. ft  
Counted as living area: Yes

Heated: Yes  
Finished: Yes  
Enclosed: Yes  
Contiguous: Yes  
Permitted: Yes  
Wet space: Yes  
Addition: No  
Conversion: No

13 Floor 1 - Foyer



Dimensions: 23'4" x 4'2"  
Area: 98 sq. ft  
Counted as living area: Yes

Heated: Yes  
Finished: Yes  
Enclosed: Yes  
Contiguous: Yes  
Permitted: Yes  
Wet space: No  
Addition: No  
Conversion: No