

Primary Bedroom
12'9" x 11'9"

Bath
5'11" x 3'11"

Kitchen
12'2" x 11'9"

Dining Room
9'9" x 12'1"

Bath
4'11" x 7'6"

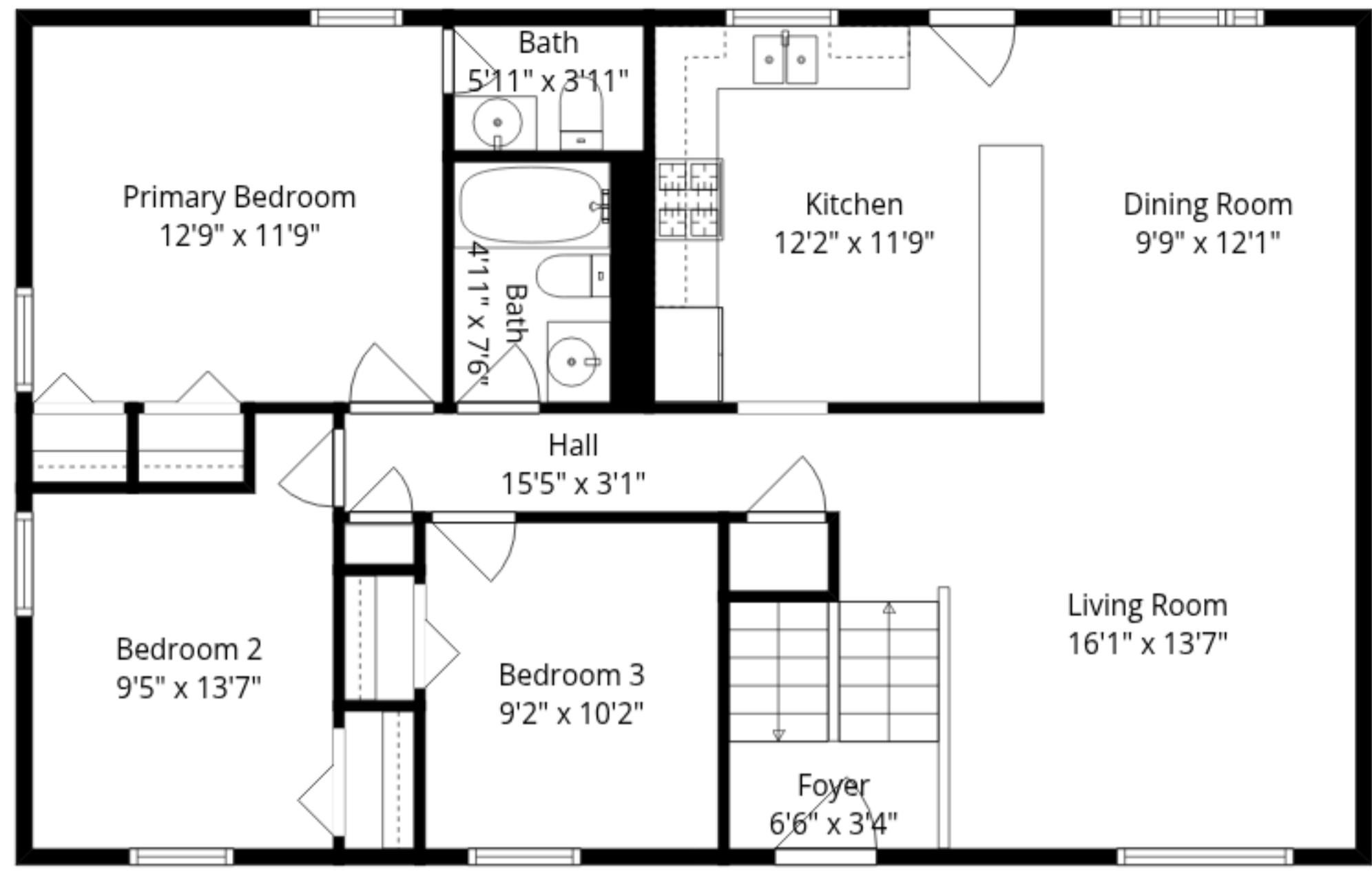
Hall
15'5" x 3'1"

Bedroom 2
9'5" x 13'7"

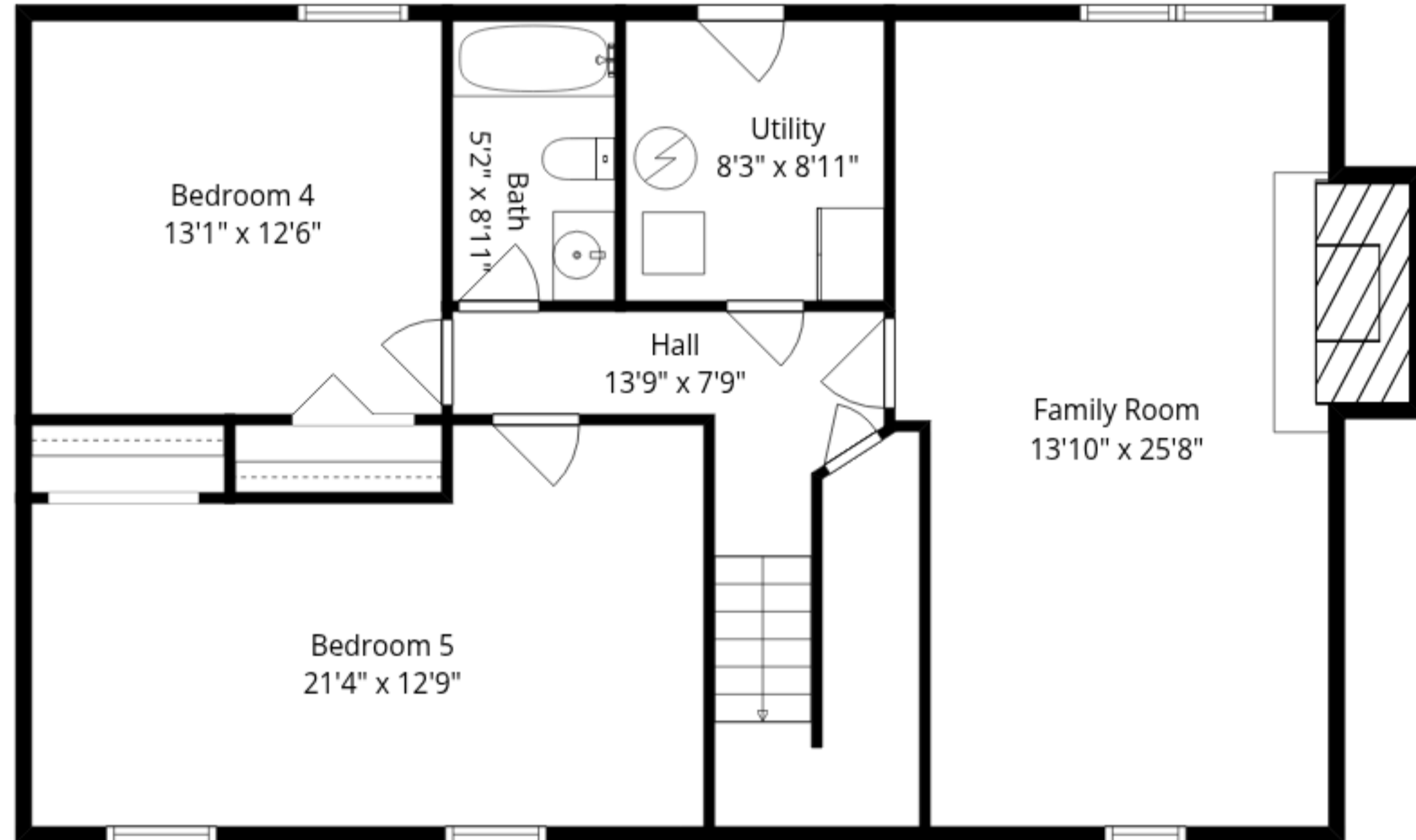
Bedroom 3
9'2" x 10'2"

Living Room
16'1" x 13'7"

Foyer
6'6" x 3'4"



Main Floor



Lower Floor

Total GLA: 2184 sq. ft | Total: 2275 sq. ft
 Lower floor: 1057 sq. ft (Excluded areas 91 sq. ft)
 Main floor: 1127 sq. ft

Sizes And Dimensions Are Approximate. Actual May Vary.