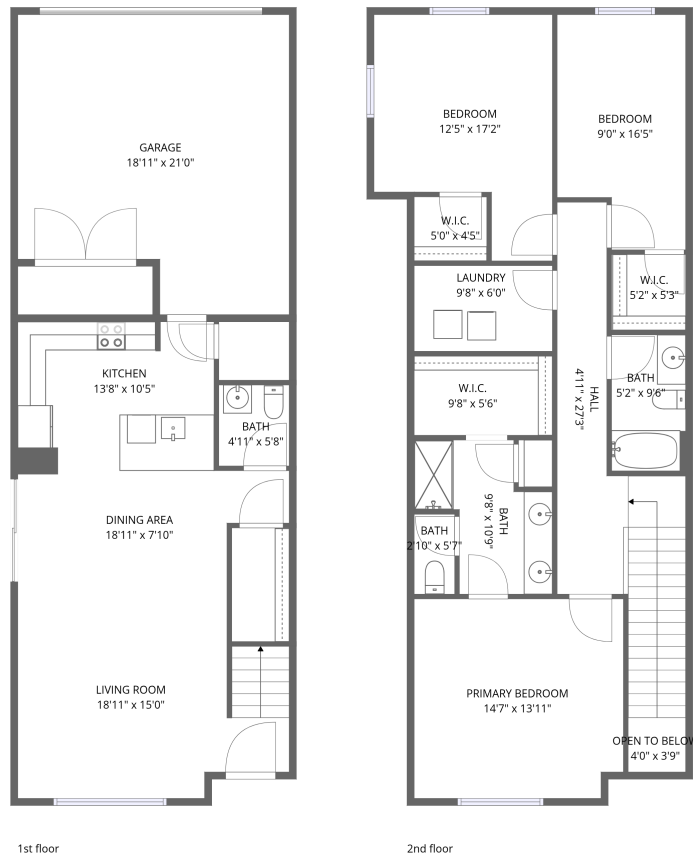


Home data report

6931 4th St Rd unit 1, Greeley, CO, US



Total Area: 1667 sq. ft

1st Floor: 620 sq. ft, 2nd Floor: 1047 sq. ft

Excluded: Undefined 32 sq. ft, Garage 359 sq. ft, Open to below 15 sq. ft, Walls: 126 sq. ft

Property summary

 **2** Floors

 **3** Bedrooms

 **2** Bathrooms

Home data report

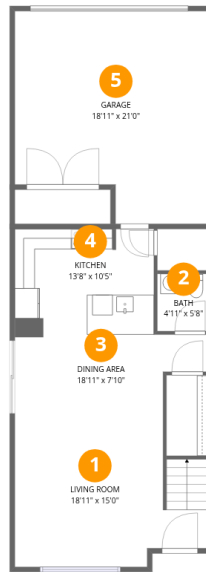
6931 4th St Rd unit 1, Greeley, CO, US

 **1**
Half baths

 **1**
Garages

Home data report

6931 4th St Rd unit 1, Greeley, CO, US



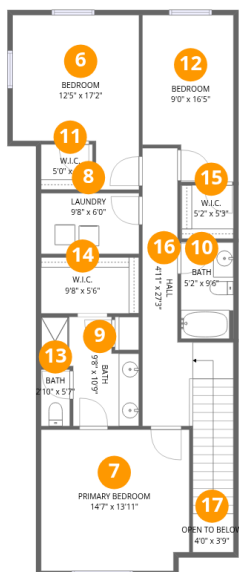
Room dimensions

Floor 1

Total:620sqft

Excluded: 391sqft

#		Dimensions	sqft	Counted as living area
1	Living Room	18'11" x 15'0"	253 sq. ft	Yes
2	Bath	4'11" x 5'8"	28 sq. ft	Yes
3	Dining Area	18'11" x 7'10"	130 sq. ft	Yes
4	Kitchen	13'8" x 10'5"	143 sq. ft	Yes
5	Garage	18'11" x 21'0"	359 sq. ft	No



Room dimensions

Floor 2

Total:1047sqft Excluded: 15sqft

#		Dimensions	sqft	Counted as living area
6	Bedroom	12'5" x 17'2"	175 sq. ft	Yes
7	Primary Bedroom	14'7" x 13'11"	201 sq. ft	Yes
8	Laundry	9'8" x 6'0"	58 sq. ft	Yes
9	Bath	9'8" x 10'9"	75 sq. ft	Yes
10	Bath	5'2" x 9'6"	49 sq. ft	Yes
11	W.I.C.	5'0" x 4'5"	23 sq. ft	Yes
12	Bedroom	9'0" x 16'5"	134 sq. ft	Yes
13	Bath	2'10" x 5'7"	16 sq. ft	Yes
14	W.I.C.	9'8" x 5'6"	53 sq. ft	Yes
15	W.I.C.	5'2" x 5'3"	27 sq. ft	Yes
16	Hall	4'11" x 27'3"	175 sq. ft	Yes

Home data report

6931 4th St Rd unit 1,Greeley,CO,US

#		Dimensions	sqft	Counted as living area
17	Open To Below	4'0" x 3'9"	15 sq. ft	No

1 Floor 1 - Living Room



Dimensions: 18'11" x 15'0"
Area: 253 sq. ft
Counted as living area: Yes

Heated: Yes
Finished: Yes
Enclosed: Yes
Contiguous: Yes
Permitted: Yes
Wet space: No
Addition: No
Conversion: No

2 Floor 1 - Bath



Dimensions: 4'11" x 5'8"
Area: 28 sq. ft
Counted as living area: Yes

Heated: Yes
Finished: Yes
Enclosed: Yes
Contiguous: Yes
Permitted: Yes
Wet space: No
Addition: No
Conversion: No

3 Floor 1 - Dining Area



Dimensions: 18'11" x 7'10"
Area: 130 sq. ft
Counted as living area: Yes

Heated: Yes
Finished: Yes
Enclosed: Yes
Contiguous: Yes
Permitted: Yes
Wet space: No
Addition: No
Conversion: No

4 Floor 1 - Kitchen



Dimensions: 13'8" x 10'5"
Area: 143 sq. ft
Counted as living area: Yes

Heated: Yes
Finished: Yes
Enclosed: Yes
Contiguous: Yes
Permitted: Yes
Wet space: No
Addition: No
Conversion: No

5 Floor 1 - Garage



Dimensions: 18'11" x 21'0"
Area: 359 sq. ft
Counted as living area: No

Heated: No
Finished: No
Enclosed: Yes
Contiguous: Yes
Permitted: Yes
Wet space: No
Addition: No
Conversion: No

6 Floor 2 - Bedroom



Dimensions: 12'5" x 17'2"
Area: 175 sq. ft
Counted as living area: Yes

Heated: Yes
Finished: Yes
Enclosed: Yes
Contiguous: Yes
Permitted: Yes
Wet space: No
Addition: No
Conversion: No

7 Floor 2 - Primary Bedroom



Dimensions: 14'7" x 13'11"
Area: 201 sq. ft
Counted as living area: Yes

Heated: Yes
Finished: Yes
Enclosed: Yes
Contiguous: Yes
Permitted: Yes
Wet space: No
Addition: No
Conversion: No

8 Floor 2 - Laundry



Dimensions: 9'8" x 6'0"
Area: 58 sq. ft
Counted as living area: Yes

Heated: Yes
Finished: Yes
Enclosed: Yes
Contiguous: Yes
Permitted: Yes
Wet space: No
Addition: No
Conversion: No

9 Floor 2 - Bath



Dimensions: 9'8" x 10'9"
Area: 75 sq. ft
Counted as living area: Yes

Heated: Yes
Finished: Yes
Enclosed: Yes
Contiguous: Yes
Permitted: Yes
Wet space: Yes
Addition: No
Conversion: No

10 Floor 2 - Bath



Dimensions: 5'2" x 9'6"
Area: 49 sq. ft
Counted as living area: Yes

Heated: Yes
Finished: Yes
Enclosed: Yes
Contiguous: Yes
Permitted: Yes
Wet space: Yes
Addition: No
Conversion: No

11 Floor 2 - W.I.C.



Dimensions: 5'0" x 4'5"
Area: 23 sq. ft
Counted as living area: Yes

Heated: Yes
Finished: Yes
Enclosed: Yes
Contiguous: Yes
Permitted: Yes
Wet space: No
Addition: No
Conversion: No

12 Floor 2 - Bedroom



Dimensions: 9'0" x 16'5"
Area: 134 sq. ft
Counted as living area: Yes

Heated: Yes
Finished: Yes
Enclosed: Yes
Contiguous: Yes
Permitted: Yes
Wet space: No
Addition: No
Conversion: No

13 Floor 2 - Bath



Dimensions: 2'10" x 5'7"
Area: 16 sq. ft
Counted as living area: Yes

Heated: Yes
Finished: Yes
Enclosed: Yes
Contiguous: Yes
Permitted: Yes
Wet space: Yes
Addition: No
Conversion: No

14 Floor 2 - W.I.C.



Dimensions: 9'8" x 5'6"
Area: 53 sq. ft
Counted as living area: Yes

Heated: Yes
Finished: Yes
Enclosed: Yes
Contiguous: Yes
Permitted: Yes
Wet space: No
Addition: No
Conversion: No

15 Floor 2 - W.I.C.



Dimensions: 5'2" x 5'3"
Area: 27 sq. ft
Counted as living area: Yes

Heated: Yes
Finished: Yes
Enclosed: Yes
Contiguous: Yes
Permitted: Yes
Wet space: No
Addition: No
Conversion: No

16 Floor 2 - Hall



Dimensions: 4'11" x 27'3"
Area: 175 sq. ft
Counted as living area: Yes

Heated: Yes
Finished: Yes
Enclosed: Yes
Contiguous: Yes
Permitted: Yes
Wet space: No
Addition: No
Conversion: No

17 Floor 2 - Open To Below



Dimensions: 4'0" x 3'9"
Area: 15 sq. ft
Counted as living area: No

Heated: No
Finished: No
Enclosed: No
Contiguous: Yes
Permitted: No
Wet space: No
Addition: No
Conversion: No