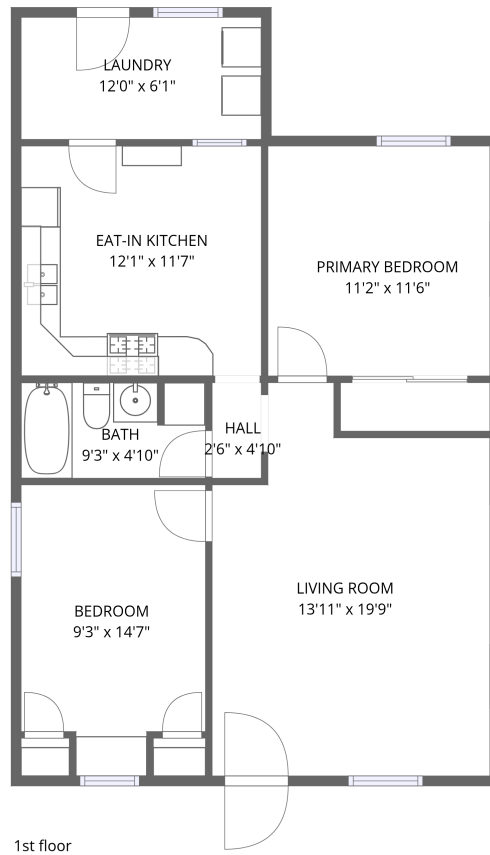


Home data report

4511 Dorset Avenue, Lisle, DuPage County, Illinois, United States, 60532




Total Area: 823 sq. ft

1st Floor: 823 sq. ft

Excluded: Walls: 63 sq. ft

Property summary

 **1** Floors

 **2** Bedrooms

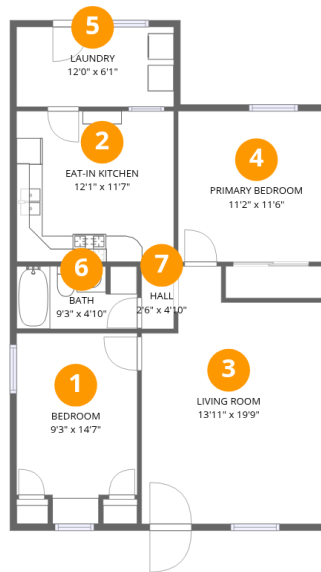
 **1** Bathrooms

Scan captured on Sat, 28 Mar 2026 20:20:28 GMT

All dimensions are approximate. This plan is for marketing purposes only.

Home data report

4511 Dorset Avenue, Lisle, DuPage County, Illinois, United States, 60532



Room dimensions

Floor 1

Total:823sqft

Excluded: 0sqft

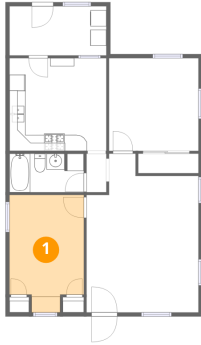
#		Dimensions	sqft	Counted as living area
1	Bedroom	9'3" x 14'7"	135 sq. ft	Yes
2	Eat-in Kitchen	12'1" x 11'7"	139 sq. ft	Yes
3	Living Room	13'11" x 19'9"	276 sq. ft	Yes
4	Primary Bedroom	11'2" x 11'6"	128 sq. ft	Yes
5	Laundry	12'0" x 6'1"	73 sq. ft	Yes
6	Bath	9'3" x 4'10"	44 sq. ft	Yes
7	Hall	2'6" x 4'10"	12 sq. ft	Yes

Scan captured on Sat, 28 Mar 2026 20:20:28 GMT

All dimensions are approximate. This plan is for marketing purposes only.

4511 Dorset Avenue, Lisle, DuPage County, Illinois, United States, 60532

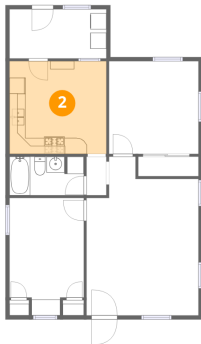
1 Floor 1 - Bedroom



Dimensions: 9'3" x 14'7"
Area: 135 sq. ft
Counted as living area: Yes

Heated: Yes
Finished: Yes
Enclosed: Yes
Contiguous: Yes
Permitted: Yes
Wet space: No
Addition: No
Conversion: No

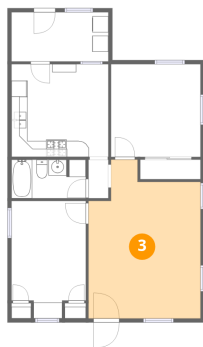
2 Floor 1 - Eat-in Kitchen



Dimensions: 12'1" x 11'7"
Area: 139 sq. ft
Counted as living area: Yes

Heated: Yes
Finished: Yes
Enclosed: Yes
Contiguous: Yes
Permitted: Yes
Wet space: No
Addition: No
Conversion: No

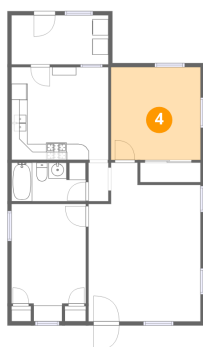
3 Floor 1 - Living Room



Dimensions: 13'11" x 19'9"
Area: 276 sq. ft
Counted as living area: Yes

Heated: Yes
Finished: Yes
Enclosed: Yes
Contiguous: Yes
Permitted: Yes
Wet space: No
Addition: No
Conversion: No

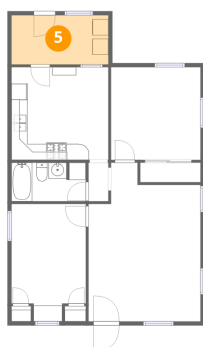
4 Floor 1 - Primary Bedroom



Dimensions: 11'2" x 11'6"
Area: 128 sq. ft
Counted as living area: Yes

Heated: Yes
Finished: Yes
Enclosed: Yes
Contiguous: Yes
Permitted: Yes
Wet space: No
Addition: No
Conversion: No

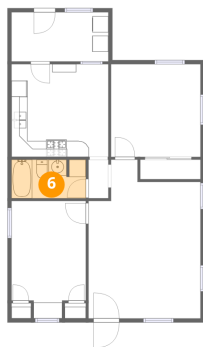
5 Floor 1 - Laundry



Dimensions: 12'0" x 6'1"
Area: 73 sq. ft
Counted as living area: Yes

Heated: Yes
Finished: Yes
Enclosed: Yes
Contiguous: Yes
Permitted: Yes
Wet space: No
Addition: No
Conversion: No

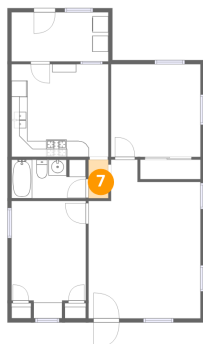
6 Floor 1 - Bath



Dimensions: 9'3" x 4'10"
Area: 44 sq. ft
Counted as living area: Yes

Heated: Yes
Finished: Yes
Enclosed: Yes
Contiguous: Yes
Permitted: Yes
Wet space: Yes
Addition: No
Conversion: No

7 Floor 1 - Hall



Dimensions: 2'6" x 4'10"
Area: 12 sq. ft
Counted as living area: Yes

Heated: Yes
Finished: Yes
Enclosed: Yes
Contiguous: Yes
Permitted: Yes
Wet space: No
Addition: No
Conversion: No