



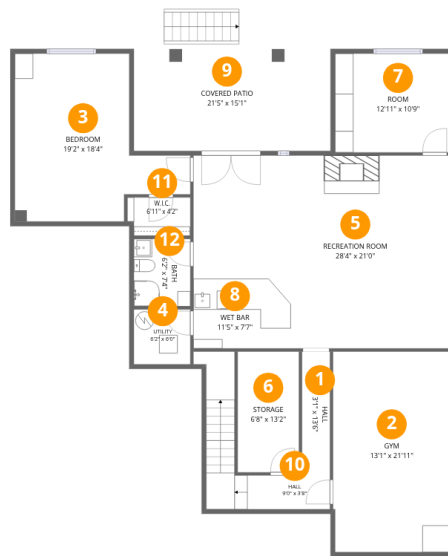
Total Area: 4756 sq. ft

Basement: 1532 sq. ft, 1st Floor: 1650 sq. ft, 2nd Floor: 1574 sq. ft

Excluded: Storage 88 sq. ft, Utility 37 sq. ft, Covered patio 285 sq. ft, Garage 646 sq. ft, Deck 284 sq. ft, Open to below 390 sq. ft, Walls: 361 sq. ft

Property summary





Room dimensions

Floor 1 Below grade

Total: 1532 sqft

Excluded: 410 sqft

#		Dimensions	sqft	Counted as living area
1	Hall	3'1" x 13'6"	41 sq. ft	Yes
2	Gym	13'1" x 21'11"	286 sq. ft	Yes
3	Bedroom	19'2" x 18'4"	256 sq. ft	Yes
4	Utility	6'2" x 6'0"	37 sq. ft	No
5	Recreation Room	28'4" x 21'0"	511 sq. ft	Yes
6	Storage	6'8" x 13'2"	88 sq. ft	No
7	Room	12'11" x 10'9"	139 sq. ft	Yes
8	Wet Bar	11'5" x 7'7"	87 sq. ft	Yes
9	Covered Patio	21'5" x 15'1"	285 sq. ft	No
10	Hall	9'0" x 3'8"	94 sq. ft	Yes
11	W.I.C.	6'11" x 4'2"	28 sq. ft	Yes

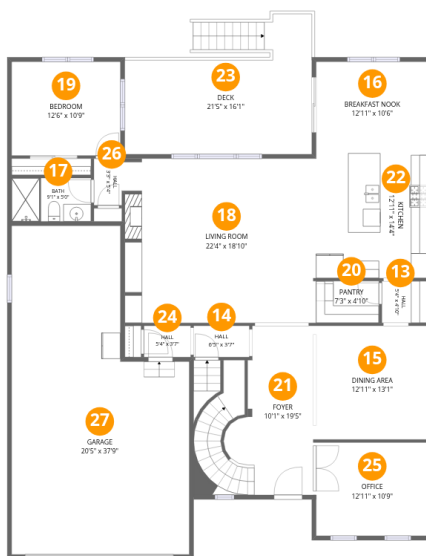
Home data report

8684 Yucca St,Arvada,CO,US

#		Dimensions	sqft	Counted as living area
12	Bath	6'2" x 7'4"	45 sq. ft	Yes

Home data report

8684 Yucca St, Arvada, CO, US



Room dimensions

Floor 2

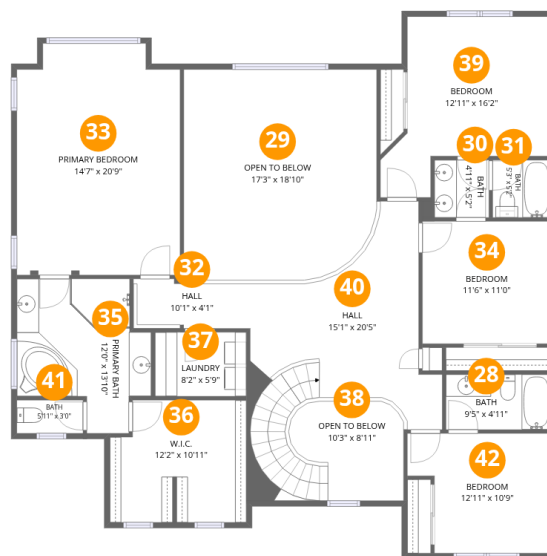
Total: 1650sqft Excluded: 930sqft

#		Dimensions	sqft	Counted as living area
13	Hall	5'4" x 4'10"	26 sq. ft	Yes
14	Hall	6'5" x 3'7"	23 sq. ft	Yes
15	Dining Area	12'11" x 13'1"	168 sq. ft	Yes
16	Breakfast Nook	12'11" x 10'6"	136 sq. ft	Yes
17	Bath	9'1" x 5'0"	45 sq. ft	Yes
18	Living Room	22'4" x 18'10"	411 sq. ft	Yes
19	Bedroom	12'6" x 10'9"	135 sq. ft	Yes
20	Pantry	7'3" x 4'10"	35 sq. ft	Yes
21	Foyer	10'1" x 19'5"	216 sq. ft	Yes
22	Kitchen	12'11" x 14'4"	185 sq. ft	Yes
23	Deck	21'5" x 16'1"	284 sq. ft	No

Home data report

8684 Yucca St,Arvada,CO,US

#		Dimensions	sqft	Counted as living area
24	Hall	5'4" x 3'7"	19 sq. ft	Yes
25	Office	12'11" x 10'9"	138 sq. ft	Yes
26	Hall	3'3" x 5'4"	17 sq. ft	Yes
27	Garage	20'5" x 37'9"	646 sq. ft	No



Room dimensions

Floor 3

Total: 1574 sqft

Excluded: 390 sqft

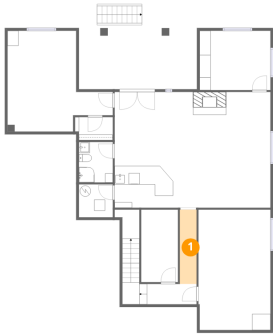
#		Dimensions	sqft	Counted as living area
28	Bath	9'5" x 4'11"	47 sq. ft	Yes
29	Open To Below	17'3" x 18'10"	315 sq. ft	No
30	Bath	4'11" x 5'2"	25 sq. ft	Yes
31	Bath	5'3" x 5'2"	27 sq. ft	Yes
32	Hall	10'1" x 4'1"	46 sq. ft	Yes
33	Primary Bedroom	14'7" x 20'9"	291 sq. ft	Yes
34	Bedroom	11'6" x 11'0"	126 sq. ft	Yes
35	Primary Bath	12'0" x 13'10"	130 sq. ft	Yes
36	W.I.C.	12'2" x 10'11"	126 sq. ft	Yes
37	Laundry	8'2" x 5'9"	47 sq. ft	Yes
38	Open To Below	10'3" x 8'11"	75 sq. ft	No

Home data report

8684 Yucca St,Arvada,CO,US

#		Dimensions	sqft	Counted as living area
39	Bedroom	12'11" x 16'2"	180 sq. ft	Yes
40	Hall	15'1" x 20'5"	262 sq. ft	Yes
41	Bath	5'11" x 3'0"	18 sq. ft	Yes
42	Bedroom	12'11" x 10'9"	121 sq. ft	Yes

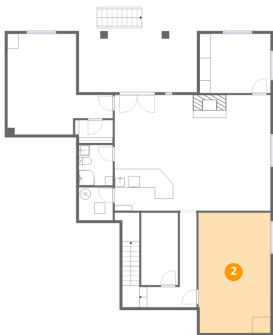
1 Floor 1 - Hall



Dimensions: 3'1" x 13'6"
Area: 41 sq. ft
Counted as living area: Yes

Heated: Yes
Finished: Yes
Enclosed: Yes
Contiguous: Yes
Permitted: Yes
Wet space: No
Addition: No
Conversion: No

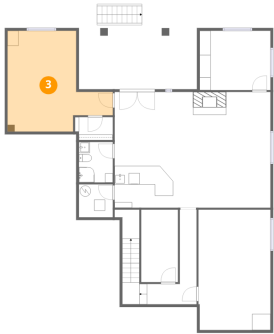
2 Floor 1 - Gym



Dimensions: 13'1" x 21'11"
Area: 286 sq. ft
Counted as living area: Yes

Heated: Yes
Finished: Yes
Enclosed: Yes
Contiguous: Yes
Permitted: Yes
Wet space: No
Addition: No
Conversion: No

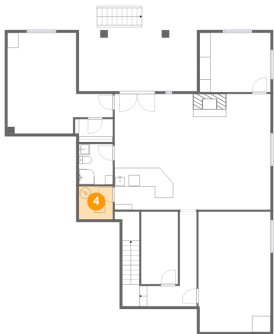
3 Floor 1 - Bedroom



Dimensions: 19'2" x 18'4"
Area: 256 sq. ft
Counted as living area: Yes

Heated: Yes
Finished: Yes
Enclosed: Yes
Contiguous: Yes
Permitted: Yes
Wet space: No
Addition: No
Conversion: No

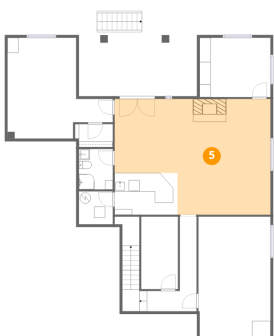
4 Floor 1 - Utility



Dimensions: 6'2" x 6'0"
Area: 37 sq. ft
Counted as living area: No

Heated: Yes
Finished: No
Enclosed: Yes
Contiguous: Yes
Permitted: Yes
Wet space: No
Addition: No
Conversion: No

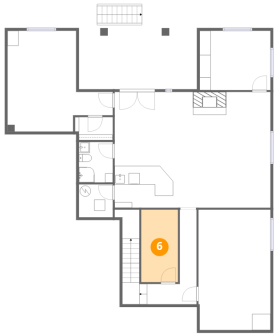
5 Floor 1 - Recreation Room



Dimensions: 28'4" x 21'0"
Area: 511 sq. ft
Counted as living area: Yes

Heated: Yes
Finished: Yes
Enclosed: Yes
Contiguous: Yes
Permitted: Yes
Wet space: No
Addition: No
Conversion: No

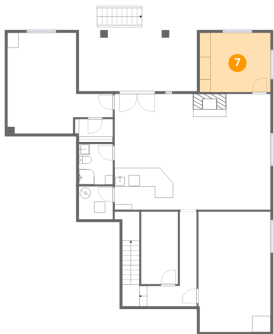
6 Floor 1 - Storage



Dimensions: 6'8" x 13'2"
Area: 88 sq. ft
Counted as living area: No

Heated: No
Finished: No
Enclosed: No
Contiguous: Yes
Permitted: Yes
Wet space: No
Addition: No
Conversion: No

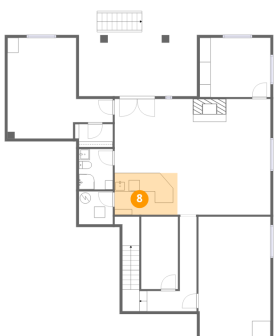
7 Floor 1 - Room



Dimensions: 12'11" x 10'9"
Area: 139 sq. ft
Counted as living area: Yes

Heated: Yes
Finished: Yes
Enclosed: Yes
Contiguous: Yes
Permitted: Yes
Wet space: No
Addition: No
Conversion: No

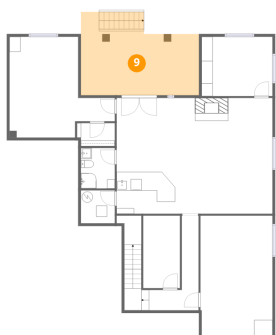
8 Floor 1 - Wet Bar



Dimensions: 11'5" x 7'7"
Area: 87 sq. ft
Counted as living area: Yes

Heated: Yes
Finished: Yes
Enclosed: Yes
Contiguous: Yes
Permitted: Yes
Wet space: No
Addition: No
Conversion: No

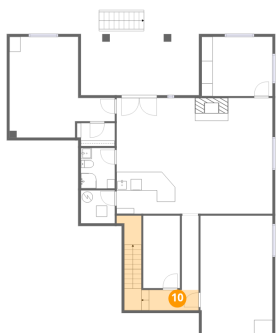
9 Floor 1 - Covered Patio



Dimensions: 21'5" x 15'1"
Area: 285 sq. ft
Counted as living area: No

Heated: No
Finished: No
Enclosed: No
Contiguous: Yes
Permitted: Yes
Wet space: No
Addition: No
Conversion: No

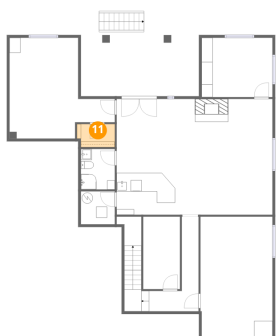
10 Floor 1 - Hall



Dimensions: 9'0" x 3'8"
Area: 94 sq. ft
Counted as living area: Yes

Heated: Yes
Finished: Yes
Enclosed: Yes
Contiguous: Yes
Permitted: Yes
Wet space: No
Addition: No
Conversion: No

11 Floor 1 - W.I.C.



Dimensions: 6'11" x 4'2"
Area: 28 sq. ft
Counted as living area: Yes

Heated: Yes
Finished: Yes
Enclosed: Yes
Contiguous: Yes
Permitted: Yes
Wet space: No
Addition: No
Conversion: No

12 Floor 1 - Bath



Dimensions: 6'2" x 7'4"
Area: 45 sq. ft
Counted as living area: Yes

Heated: Yes
Finished: Yes
Enclosed: Yes
Contiguous: Yes
Permitted: Yes
Wet space: Yes
Addition: No
Conversion: No

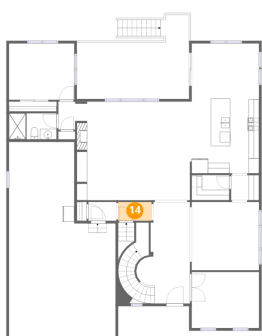
13 Floor 2 - Hall



Dimensions: 5'4" x 4'10"
Area: 26 sq. ft
Counted as living area: Yes

Heated: Yes
Finished: Yes
Enclosed: Yes
Contiguous: Yes
Permitted: Yes
Wet space: No
Addition: No
Conversion: No

14 Floor 2 - Hall



Dimensions: 6'5" x 3'7"
Area: 23 sq. ft
Counted as living area: Yes

Heated: Yes
Finished: Yes
Enclosed: Yes
Contiguous: Yes
Permitted: Yes
Wet space: No
Addition: No
Conversion: No

15 Floor 2 - Dining Area



Dimensions: 12'11" x 13'1"
Area: 168 sq. ft
Counted as living area: Yes

Heated: Yes
Finished: Yes
Enclosed: Yes
Contiguous: Yes
Permitted: Yes
Wet space: No
Addition: No
Conversion: No

16 Floor 2 - Breakfast Nook



Dimensions: 12'11" x 10'6"
Area: 136 sq. ft
Counted as living area: Yes

Heated: Yes
Finished: Yes
Enclosed: Yes
Contiguous: Yes
Permitted: Yes
Wet space: No
Addition: No
Conversion: No

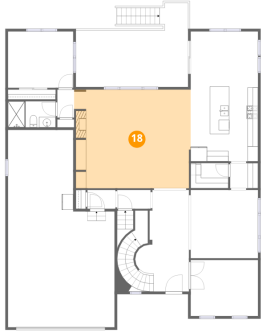
17 Floor 2 - Bath



Dimensions: 9'1" x 5'0"
Area: 45 sq. ft
Counted as living area: Yes

Heated: Yes
Finished: Yes
Enclosed: Yes
Contiguous: Yes
Permitted: Yes
Wet space: Yes
Addition: No
Conversion: No

18 Floor 2 - Living Room



Dimensions: 22'4" x 18'10"
Area: 411 sq. ft
Counted as living area: Yes

Heated: Yes
Finished: Yes
Enclosed: Yes
Contiguous: Yes
Permitted: Yes
Wet space: No
Addition: No
Conversion: No

19 Floor 2 - Bedroom



Dimensions: 12'6" x 10'9"
Area: 135 sq. ft
Counted as living area: Yes

Heated: Yes
Finished: Yes
Enclosed: Yes
Contiguous: Yes
Permitted: Yes
Wet space: No
Addition: No
Conversion: No

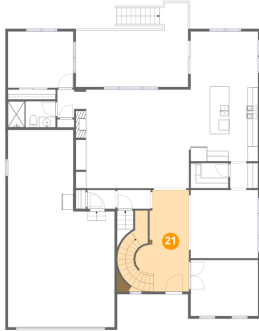
20 Floor 2 - Pantry



Dimensions: 7'3" x 4'10"
Area: 35 sq. ft
Counted as living area: Yes

Heated: Yes
Finished: Yes
Enclosed: Yes
Contiguous: Yes
Permitted: Yes
Wet space: No
Addition: No
Conversion: No

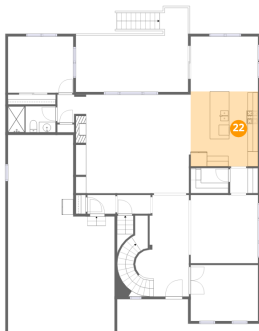
21 Floor 2 - Foyer



Dimensions: 10'1" x 19'5"
Area: 216 sq. ft
Counted as living area: Yes

Heated: Yes
Finished: Yes
Enclosed: Yes
Contiguous: Yes
Permitted: Yes
Wet space: No
Addition: No
Conversion: No

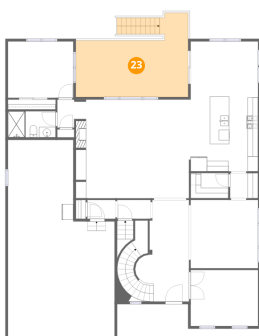
22 Floor 2 - Kitchen



Dimensions: 12'11" x 14'4"
Area: 185 sq. ft
Counted as living area: Yes

Heated: Yes
Finished: Yes
Enclosed: Yes
Contiguous: Yes
Permitted: Yes
Wet space: No
Addition: No
Conversion: No

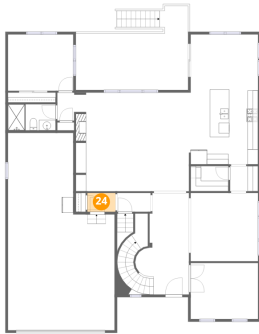
23 Floor 2 - Deck



Dimensions: 21'5" x 16'1"
Area: 284 sq. ft
Counted as living area: No

Heated: No
Finished: No
Enclosed: No
Contiguous: Yes
Permitted: Yes
Wet space: No
Addition: No
Conversion: No

24 Floor 2 - Hall



Dimensions: 5'4" x 3'7"
Area: 19 sq. ft
Counted as living area: Yes

Heated: Yes
Finished: Yes
Enclosed: Yes
Contiguous: Yes
Permitted: Yes
Wet space: No
Addition: No
Conversion: No

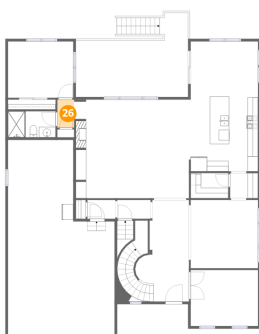
25 Floor 2 - Office



Dimensions: 12'11" x 10'9"
Area: 138 sq. ft
Counted as living area: Yes

Heated: Yes
Finished: Yes
Enclosed: Yes
Contiguous: Yes
Permitted: Yes
Wet space: No
Addition: No
Conversion: No

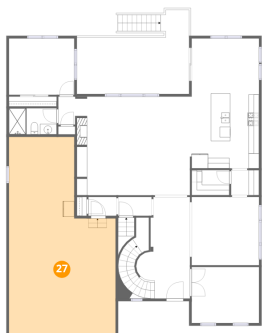
26 Floor 2 - Hall



Dimensions: 3'3" x 5'4"
Area: 17 sq. ft
Counted as living area: Yes

Heated: Yes
Finished: Yes
Enclosed: Yes
Contiguous: Yes
Permitted: Yes
Wet space: No
Addition: No
Conversion: No

27 Floor 2 - Garage



Dimensions: 20'5" x 37'9"
Area: 646 sq. ft
Counted as living area: No

Heated: No
Finished: No
Enclosed: Yes
Contiguous: Yes
Permitted: Yes
Wet space: No
Addition: No
Conversion: No

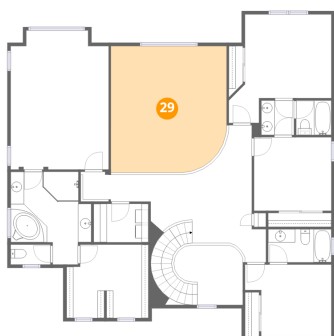
28 Floor 3 - Bath



Dimensions: 9'5" x 4'11"
Area: 47 sq. ft
Counted as living area: Yes

Heated: Yes
Finished: Yes
Enclosed: Yes
Contiguous: Yes
Permitted: Yes
Wet space: Yes
Addition: No
Conversion: No

29 Floor 3 - Open To Below



Dimensions: 17'3" x 18'10"
Area: 315 sq. ft
Counted as living area: No

Heated: No
Finished: No
Enclosed: No
Contiguous: Yes
Permitted: No
Wet space: No
Addition: No
Conversion: No

30 Floor 3 - Bath



Dimensions: 4'11" x 5'2"
Area: 25 sq. ft
Counted as living area: Yes

Heated: Yes
Finished: Yes
Enclosed: Yes
Contiguous: Yes
Permitted: Yes
Wet space: Yes
Addition: No
Conversion: No

31 Floor 3 - Bath



Dimensions: 5'3" x 5'2"
Area: 27 sq. ft
Counted as living area: Yes

Heated: Yes
Finished: Yes
Enclosed: Yes
Contiguous: Yes
Permitted: Yes
Wet space: Yes
Addition: No
Conversion: No

32 Floor 3 - Hall



Dimensions: 10'1" x 4'1"
Area: 46 sq. ft
Counted as living area: Yes

Heated: Yes
Finished: Yes
Enclosed: Yes
Contiguous: Yes
Permitted: Yes
Wet space: No
Addition: No
Conversion: No

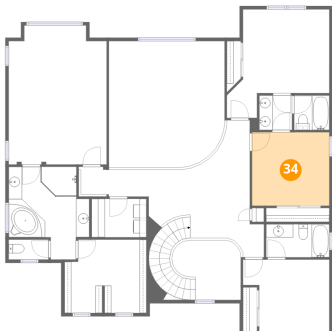
33 Floor 3 - Primary Bedroom



Dimensions: 14'7" x 20'9"
Area: 291 sq. ft
Counted as living area: Yes

Heated: Yes
Finished: Yes
Enclosed: Yes
Contiguous: Yes
Permitted: Yes
Wet space: No
Addition: No
Conversion: No

34 Floor 3 - Bedroom



Dimensions: 11'6" x 11'0"
Area: 126 sq. ft
Counted as living area: Yes

Heated: Yes
Finished: Yes
Enclosed: Yes
Contiguous: Yes
Permitted: Yes
Wet space: No
Addition: No
Conversion: No

35 Floor 3 - Primary Bath



Dimensions: 12'0" x 13'10"
Area: 130 sq. ft
Counted as living area: Yes

Heated: Yes
Finished: Yes
Enclosed: Yes
Contiguous: Yes
Permitted: Yes
Wet space: Yes
Addition: No
Conversion: No

36 Floor 3 - W.I.C.



Dimensions: 12'2" x 10'11"
Area: 126 sq. ft
Counted as living area: Yes

Heated: Yes
Finished: Yes
Enclosed: Yes
Contiguous: Yes
Permitted: Yes
Wet space: No
Addition: No
Conversion: No

37 Floor 3 - Laundry



Dimensions: 8'2" x 5'9"
Area: 47 sq. ft
Counted as living area: Yes

Heated: Yes
Finished: Yes
Enclosed: Yes
Contiguous: Yes
Permitted: Yes
Wet space: No
Addition: No
Conversion: No

38 Floor 3 - Open To Below



Dimensions: 10'3" x 8'11"
Area: 75 sq. ft
Counted as living area: No

Heated: No
Finished: No
Enclosed: No
Contiguous: Yes
Permitted: No
Wet space: No
Addition: No
Conversion: No

39 Floor 3 - Bedroom



Dimensions: 12'11" x 16'2"
Area: 180 sq. ft
Counted as living area: Yes

Heated: Yes
Finished: Yes
Enclosed: Yes
Contiguous: Yes
Permitted: Yes
Wet space: No
Addition: No
Conversion: No

40 Floor 3 - Hall



Dimensions: 15'1" x 20'5"
Area: 262 sq. ft
Counted as living area: Yes

Heated: Yes
Finished: Yes
Enclosed: Yes
Contiguous: Yes
Permitted: Yes
Wet space: No
Addition: No
Conversion: No

41 Floor 3 - Bath



Dimensions: 5'11" x 3'0"
Area: 18 sq. ft
Counted as living area: Yes

Heated: Yes
Finished: Yes
Enclosed: Yes
Contiguous: Yes
Permitted: Yes
Wet space: Yes
Addition: No
Conversion: No

42 Floor 3 - Bedroom



Dimensions: 12'11" x 10'9"
Area: 121 sq. ft
Counted as living area: Yes

Heated: Yes
Finished: Yes
Enclosed: Yes
Contiguous: Yes
Permitted: Yes
Wet space: No
Addition: No
Conversion: No