

Home data report

3540 West Evergreen Avenue, Humboldt Park, Chicago, Cook County, Illinois, United States, 60651



Total Area: 2062 sq. ft

Basement: 685 sq. ft, 1st Floor: 786 sq. ft, 2nd Floor: 591 sq. ft

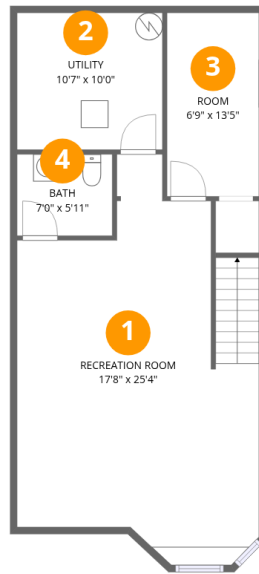
Excluded: Balcony 202 sq. ft, Walls: 196 sq. ft

Property summary



Home data report

3540 West Evergreen Avenue, Humboldt Park, Chicago, Cook County, Illinois, United States, 60651



Room dimensions

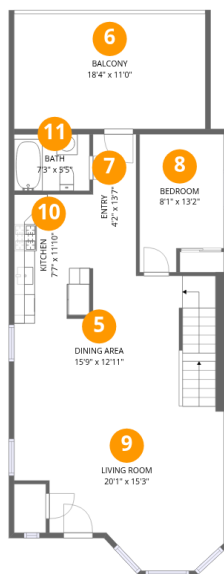
Floor 1 Below grade

Total:685sqft Excluded: 0sqft

#		Dimensions	sqft	Counted as living area
1	Recreation Room	17'8" x 25'4"	415 sq. ft	Yes
2	Utility	10'7" x 10'0"	106 sq. ft	Yes
3	Room	6'9" x 13'5"	90 sq. ft	Yes
4	Bath	7'0" x 5'11"	41 sq. ft	Yes

Home data report

3540 West Evergreen Avenue, Humboldt Park, Chicago, Cook County, Illinois, United States, 60651



Room dimensions

Floor 2

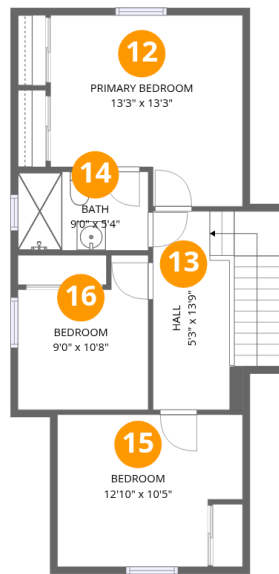
Total:786sqft

Excluded: 202sqft

#		Dimensions	sqft	Counted as living area
5	Dining Area	15'9" x 12'11"	219 sq. ft	Yes
6	Balcony	18'4" x 11'0"	202 sq. ft	No
7	Entry	4'2" x 13'7"	56 sq. ft	Yes
8	Bedroom	8'1" x 13'2"	96 sq. ft	Yes
9	Living Room	20'1" x 15'3"	247 sq. ft	Yes
10	Kitchen	7'7" x 11'10"	90 sq. ft	Yes
11	Bath	7'3" x 5'5"	39 sq. ft	Yes

Home data report

3540 West Evergreen Avenue, Humboldt Park, Chicago, Cook County, Illinois, United States, 60651



Room dimensions

Floor 3

Total:591sqft Excluded: 0sqft

#		Dimensions	sqft	Counted as living area
12	Primary Bedroom	13'3" x 13'3"	156 sq. ft	Yes
13	Hall	5'3" x 13'9"	113 sq. ft	Yes
14	Bath	9'0" x 5'4"	49 sq. ft	Yes
15	Bedroom	12'10" x 10'5"	124 sq. ft	Yes
16	Bedroom	9'0" x 10'8"	81 sq. ft	Yes

3540 West Evergreen Avenue, Humboldt Park, Chicago, Cook County, Illinois, United States, 60651

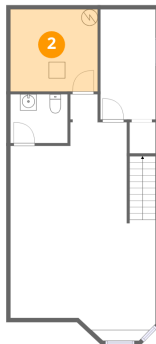
1 Floor 1 - Recreation Room



Dimensions: 17'8" x 25'4"
Area: 415 sq. ft
Counted as living area: Yes

Heated: Yes
Finished: Yes
Enclosed: Yes
Contiguous: Yes
Permitted: Yes
Wet space: No
Addition: No
Conversion: No

2 Floor 1 - Utility

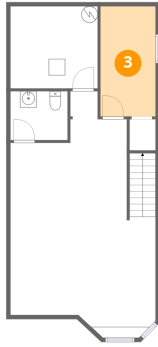


Dimensions: 10'7" x 10'0"
Area: 106 sq. ft
Counted as living area: Yes

Heated: Yes
Finished: Yes
Enclosed: Yes
Contiguous: Yes
Permitted: Yes
Wet space: No
Addition: No
Conversion: No

3540 West Evergreen Avenue, Humboldt Park, Chicago, Cook County, Illinois, United States, 60651

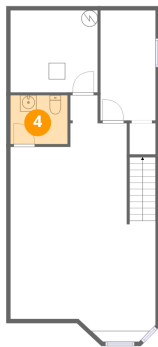
3 Floor 1 - Room



Dimensions: 6'9" x 13'5"
Area: 90 sq. ft
Counted as living area: Yes

Heated: Yes
Finished: Yes
Enclosed: Yes
Contiguous: Yes
Permitted: Yes
Wet space: No
Addition: No
Conversion: No

4 Floor 1 - Bath



Dimensions: 7'0" x 5'11"
Area: 41 sq. ft
Counted as living area: Yes

Heated: Yes
Finished: Yes
Enclosed: Yes
Contiguous: Yes
Permitted: Yes
Wet space: Yes
Addition: No
Conversion: No

5 Floor 2 - Dining Area



Dimensions: 15'9" x 12'11"
Area: 219 sq. ft
Counted as living area: Yes

Heated: Yes
Finished: Yes
Enclosed: Yes
Contiguous: Yes
Permitted: Yes
Wet space: No
Addition: No
Conversion: No

3540 West Evergreen Avenue, Humboldt Park, Chicago, Cook County, Illinois, United States, 60651

6 Floor 2 - Balcony



Dimensions: 18'4" x 11'0"
Area: 202 sq. ft
Counted as living area: No

Heated: No
Finished: No
Enclosed: No
Contiguous: Yes
Permitted: Yes
Wet space: No
Addition: No
Conversion: No

7 Floor 2 - Entry



Dimensions: 4'2" x 13'7"
Area: 56 sq. ft
Counted as living area: Yes

Heated: Yes
Finished: Yes
Enclosed: Yes
Contiguous: Yes
Permitted: Yes
Wet space: No
Addition: No
Conversion: No

8 Floor 2 - Bedroom



Dimensions: 8'1" x 13'2"
Area: 96 sq. ft
Counted as living area: Yes

Heated: Yes
Finished: Yes
Enclosed: Yes
Contiguous: Yes
Permitted: Yes
Wet space: No
Addition: No
Conversion: No

3540 West Evergreen Avenue, Humboldt Park, Chicago, Cook County, Illinois, United States, 60651

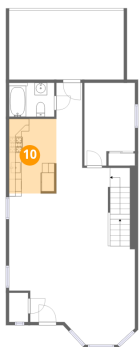
9 Floor 2 - Living Room



Dimensions: 20'1" x 15'3"
Area: 247 sq. ft
Counted as living area: Yes

Heated: Yes
Finished: Yes
Enclosed: Yes
Contiguous: Yes
Permitted: Yes
Wet space: No
Addition: No
Conversion: No

10 Floor 2 - Kitchen



Dimensions: 7'7" x 11'10"
Area: 90 sq. ft
Counted as living area: Yes

Heated: Yes
Finished: Yes
Enclosed: Yes
Contiguous: Yes
Permitted: Yes
Wet space: No
Addition: No
Conversion: No

11 Floor 2 - Bath



Dimensions: 7'3" x 5'5"
Area: 39 sq. ft
Counted as living area: Yes

Heated: Yes
Finished: Yes
Enclosed: Yes
Contiguous: Yes
Permitted: Yes
Wet space: Yes
Addition: No
Conversion: No

3540 West Evergreen Avenue, Humboldt Park, Chicago, Cook County, Illinois, United States, 60651

12 Floor 3 - Primary Bedroom



Dimensions: 13'3" x 13'3"
Area: 156 sq. ft
Counted as living area: Yes

Heated: Yes
Finished: Yes
Enclosed: Yes
Contiguous: Yes
Permitted: Yes
Wet space: No
Addition: No
Conversion: No

13 Floor 3 - Hall



Dimensions: 5'3" x 13'9"
Area: 113 sq. ft
Counted as living area: Yes

Heated: Yes
Finished: Yes
Enclosed: Yes
Contiguous: Yes
Permitted: Yes
Wet space: No
Addition: No
Conversion: No

14 Floor 3 - Bath

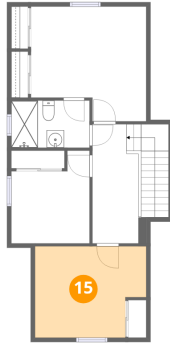


Dimensions: 9'0" x 5'4"
Area: 49 sq. ft
Counted as living area: Yes

Heated: Yes
Finished: Yes
Enclosed: Yes
Contiguous: Yes
Permitted: Yes
Wet space: Yes
Addition: No
Conversion: No

3540 West Evergreen Avenue, Humboldt Park, Chicago, Cook County, Illinois, United States, 60651

15 Floor 3 - Bedroom



Dimensions: 12'10" x 10'5"
Area: 124 sq. ft
Counted as living area: Yes

Heated: Yes
Finished: Yes
Enclosed: Yes
Contiguous: Yes
Permitted: Yes
Wet space: No
Addition: No
Conversion: No

16 Floor 3 - Bedroom



Dimensions: 9'0" x 10'8"
Area: 81 sq. ft
Counted as living area: Yes

Heated: Yes
Finished: Yes
Enclosed: Yes
Contiguous: Yes
Permitted: Yes
Wet space: No
Addition: No
Conversion: No