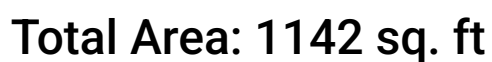


1320 Eddington Road Southeast, Garden City, Roanoke,
Roanoke city, Virginia, United States, 24014



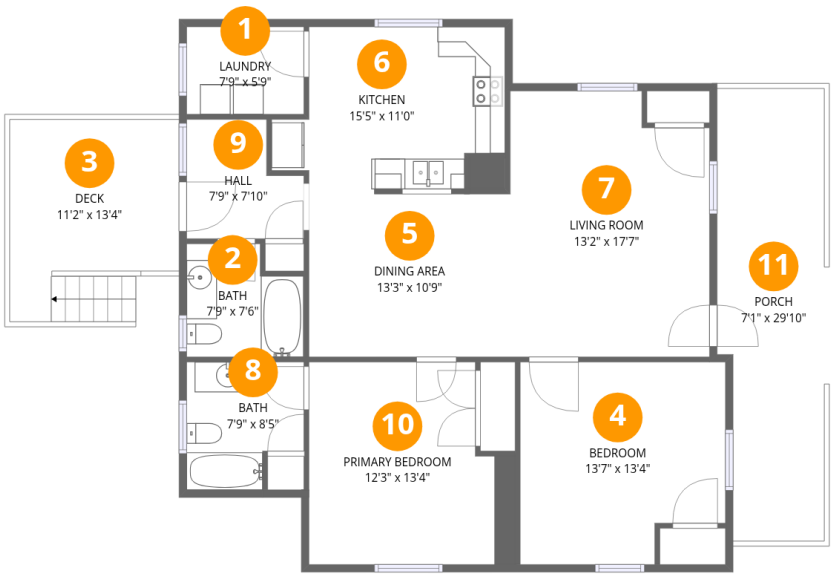
Excluded: Deck 121 sq. ft, Porch 198 sq. ft, Walls: 71 sq. ft

Property summary



Home report

1320 Eddington Road Southeast, Garden City, Roanoke,
Roanoke city, Virginia, United States, 24014



Room dimensions

Floor 1 Total:1142sqft Excluded: 319sqft

#		Max Dimensions	sqft	Included
1	Laundry	7'9" x 5'9"	45 sq. ft	Yes
2	Bath	7'9" x 7'6"	52 sq. ft	Yes
3	Deck	11'2" x 13'4"	121 sq. ft	No
4	Bedroom	13'7" x 13'4"	168 sq. ft	Yes
5	Dining Area	13'3" x 10'9"	143 sq. ft	Yes
6	Kitchen	15'5" x 11'0"	144 sq. ft	Yes
7	Living Room	13'2" x 17'7"	220 sq. ft	Yes
8	Bath	7'9" x 8'5"	58 sq. ft	Yes
9	Hall	7'9" x 7'10"	52 sq. ft	Yes
10	Primary Bedroom	12'3" x 13'4"	165 sq. ft	Yes
11	Porch	7'1" x 29'10"	198 sq. ft	No

1320 Eddington Road Southeast, Garden City, Roanoke,
Roanoke city, Virginia, United States, 24014

1 Floor 1 - Laundry



Max Dimensions: 7'9" x 5'9"
Calculated Area: 45 sq. ft
Included: Yes

Heated: Yes
Finished: Yes
Enclosed: Yes
Contiguous: Yes
Permitted: Yes
Wet space: No
Addition: No
Conversion: No

2 Floor 1 - Bath

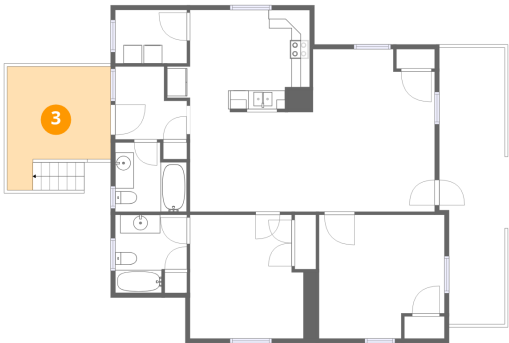


Max Dimensions: 7'9" x 7'6"
Calculated Area: 52 sq. ft
Included: Yes

Heated: Yes
Finished: Yes
Enclosed: Yes
Contiguous: Yes
Permitted: Yes
Wet space: Yes
Addition: No
Conversion: No

1320 Eddington Road Southeast, Garden City, Roanoke,
Roanoke city, Virginia, United States, 24014

3 Floor 1 - Deck



Max Dimensions: 11'2" x 13'4"
Calculated Area: 121 sq. ft
Included: No

Heated: No
Finished: No
Enclosed: No
Contiguous: Yes
Permitted: Yes
Wet space: No
Addition: No
Conversion: No

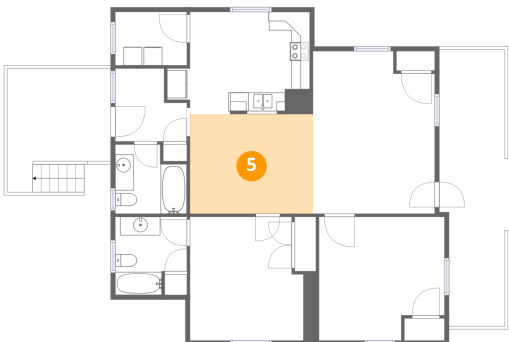
4 Floor 1 - Bedroom



Max Dimensions: 13'7" x 13'4"
Calculated Area: 168 sq. ft
Included: Yes

Heated: Yes
Finished: Yes
Enclosed: Yes
Contiguous: Yes
Permitted: Yes
Wet space: No
Addition: No
Conversion: No

5 Floor 1 - Dining Area

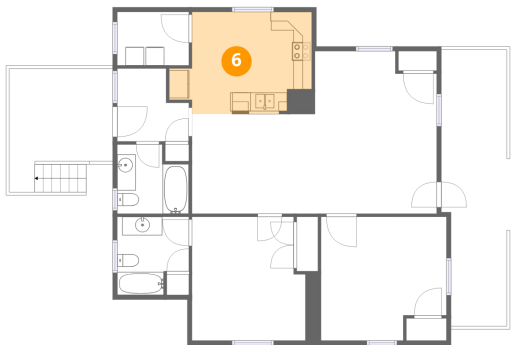


Max Dimensions: 13'3" x 10'9"
Calculated Area: 143 sq. ft
Included: Yes

Heated: Yes
Finished: Yes
Enclosed: Yes
Contiguous: Yes
Permitted: Yes
Wet space: No
Addition: No
Conversion: No

1320 Eddington Road Southeast, Garden City, Roanoke,
Roanoke city, Virginia, United States, 24014

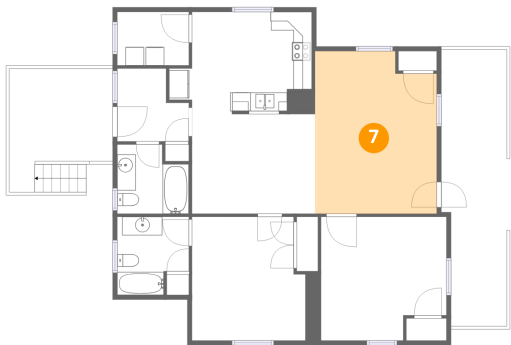
6 Floor 1 - Kitchen



Max Dimensions: 15'5" x 11'0"
Calculated Area: 144 sq. ft
Included: Yes

Heated: Yes
Finished: Yes
Enclosed: Yes
Contiguous: Yes
Permitted: Yes
Wet space: No
Addition: No
Conversion: No

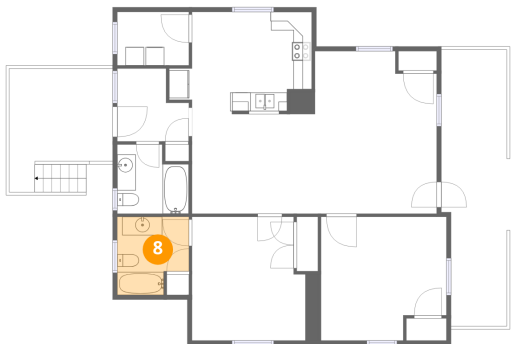
7 Floor 1 - Living Room



Max Dimensions: 13'2" x 17'7"
Calculated Area: 220 sq. ft
Included: Yes

Heated: Yes
Finished: Yes
Enclosed: Yes
Contiguous: Yes
Permitted: Yes
Wet space: No
Addition: No
Conversion: No

8 Floor 1 - Bath

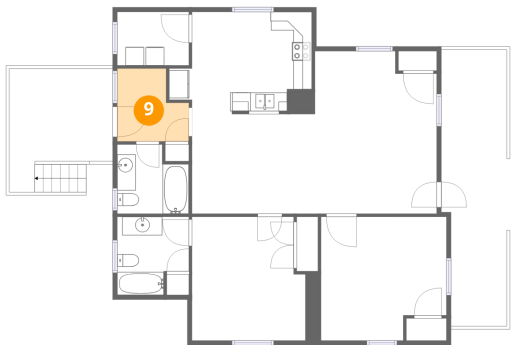


Max Dimensions: 7'9" x 8'5"
Calculated Area: 58 sq. ft
Included: Yes

Heated: Yes
Finished: Yes
Enclosed: Yes
Contiguous: Yes
Permitted: Yes
Wet space: Yes
Addition: No
Conversion: No

1320 Eddington Road Southeast, Garden City, Roanoke,
Roanoke city, Virginia, United States, 24014

9 Floor 1 - Hall



Max Dimensions: 7'9" x 7'10"
Calculated Area: 52 sq. ft
Included: Yes

Heated: Yes
Finished: Yes
Enclosed: Yes
Contiguous: Yes
Permitted: Yes
Wet space: No
Addition: No
Conversion: No

10 Floor 1 - Primary Bedroom



Max Dimensions: 12'3" x 13'4"
Calculated Area: 165 sq. ft
Included: Yes

Heated: Yes
Finished: Yes
Enclosed: Yes
Contiguous: Yes
Permitted: Yes
Wet space: No
Addition: No
Conversion: No

11 Floor 1 - Porch



Max Dimensions: 7'1" x 29'10"
Calculated Area: 198 sq. ft
Included: No

Heated: No
Finished: No
Enclosed: No
Contiguous: Yes
Permitted: Yes
Wet space: No
Addition: No
Conversion: No