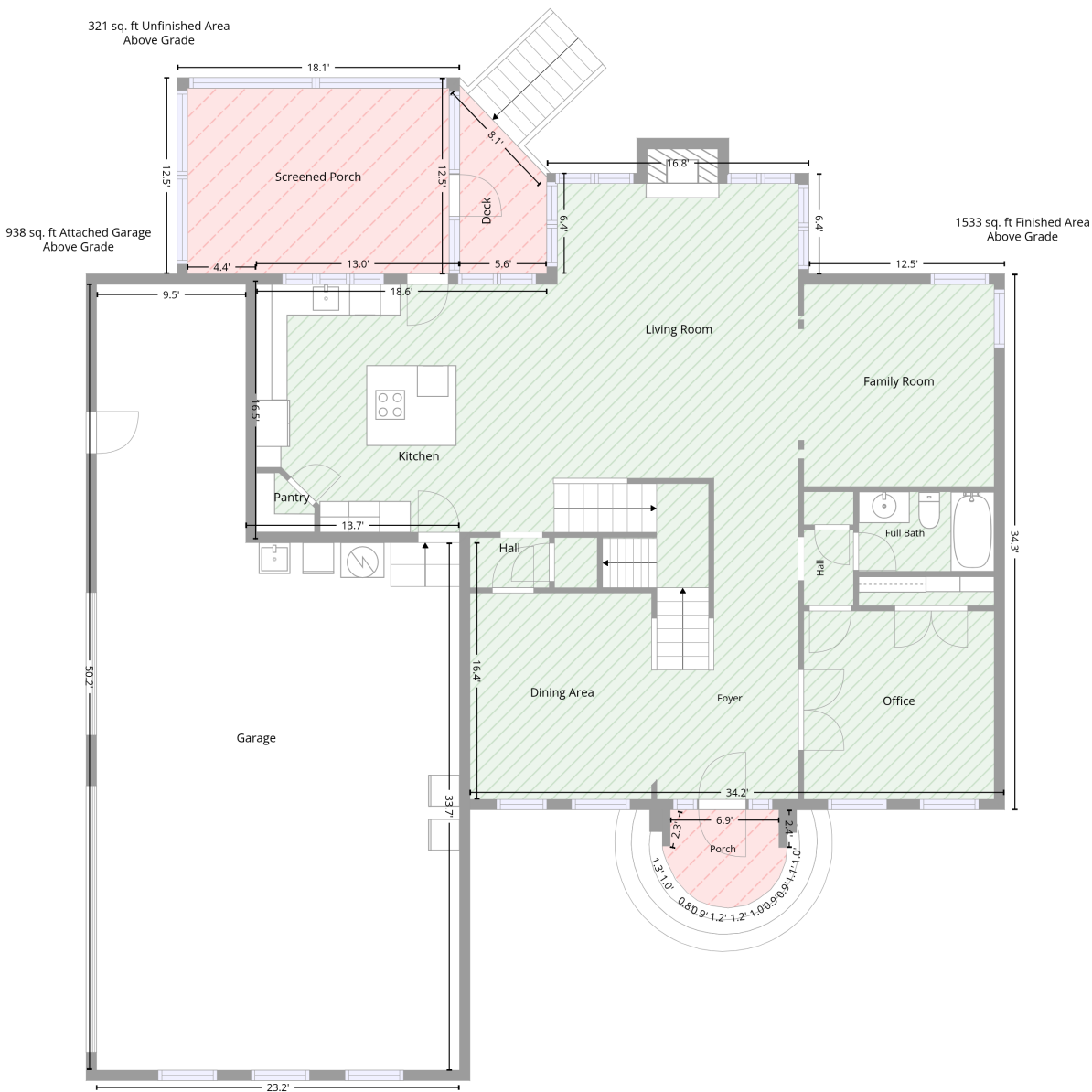


# 2744 West Pinewood Road, Chester, Chester County, South Carolina, United States, 29706

Total area: 3688 sq. ft  
Gross living area: 3367 sq. ft

Finished area: 3367 sq. ft  
Non-standard finished area: 0 sq. ft

## Level 1



Total area: 1854 sq. ft  
Gross living area: 1533 sq. ft

Finished area: 1533 sq. ft  
Non-standard finished area: 0 sq. ft

# 2744 West Pinewood Road, Chester, Chester County, South Carolina, United States, 29706

Total area: 3688 sq. ft  
Gross living area: 3367 sq. ft

Finished area: 3367 sq. ft  
Non-standard finished area: 0 sq. ft

## Level 1

Space	Area (sq. ft)	Calculation <small>Coordinate Polygon Area Algorithm using inches</small>
Finished Area • Living area • Finished Area	1533	$  \begin{aligned}  & -((549.7 + 549.7) * (103.6 - 180.8) + (549.7 + 699.7) * (180.8 - 180.8) + (699.7 + 699.7) * (180.8 - 591.5) + (699.7 + 289.9) * (591.5 - 591.5) + (289.9 + 289.9) * (591.5 - 583.5) + (289.9 + 281.9) * (583.5 - 583.5) + (281.9 + 281.9) * (583.5 - 386.8) + (281.9 + 118.1) * (386.8 - 386.8) + (118.1 + 118.1) * (386.8 - 188.7) + (118.1 + 126.1) * (188.7 - 188.7) + (126.1 + 126.1) * (188.7 - 180.8) + (126.1 + 348.8) * (180.8 - 180.8) + (348.8 + 348.8) * (180.8 - 103.6) + (348.8 + 549.7) * (103.6 - 103.6)) * 0.5 * 0.00694  \end{aligned}  $
SCREENED PORCH • Non-living area • Unfinished Area	229	$  \begin{aligned}  & -((282 + 282) * (30.4 - 180.8) + (282 + 126.1) * (180.8 - 180.8) + (126.1 + 126.1) * (180.8 - 188.7) + (126.1 + 73.4) * (188.7 - 188.7) + (73.4 + 73.4) * (188.7 - 180.8) + (73.4 + 65.4) * (180.8 - 180.8) + (65.4 + 65.4) * (180.8 - 30.4) + (65.4 + 282) * (30.4 - 30.4)) * 0.5 * 0.00694  \end{aligned}  $
PORCH • Non-living area • Unfinished Area	41	$  \begin{aligned}  & -((526.8 + 526.8) * (591.5 - 620.4) + (526.8 + 532.7) * (620.4 - 620.4) + (532.7 + 531.6) * (620.4 - 632) + (531.6 + 526.7) * (632 - 644) + (526.7 + 520.6) * (644 - 652.7) + (520.6 + 511.9) * (652.7 - 659.1) + (511.9 + 501.6) * (659.1 - 664.8) + (501.6 + 488) * (664.8 - 666.7) + (488 + 474) * (666.7 - 665.2) + (474 + 464.4) * (665.2 - 660.7) + (464.4 + 456.2) * (660.7 - 654.3) + (456.2 + 450.8) * (654.3 - 648.4) + (450.8 + 444.2) * (648.4 - 638.1) + (444.2 + 438.1) * (638.1 - 624) + (438.1 + 437.4) * (624 - 619.3) + (437.4 + 443.3) * (619.3 - 591.5) + (443.3 + 526.8) * (591.5 - 591.5)) * 0.5 * 0.00694  \end{aligned}  $
DECK • Non-living area • Unfinished Area	51	$  \begin{aligned}  & -((281.7 + 348.8) * (36.3 - 106.7) + (348.8 + 348.8) * (106.7 - 180.8) + (348.8 + 281.7) * (180.8 - 180.8) + (281.7 + 281.7) * (180.8 - 36.3)) * 0.5 * 0.00694  \end{aligned}  $
GARAGE • Attached Garage	938	$  \begin{aligned}  & -((118.1 + 118.1) * (188.7 - 386.8) + (118.1 + 281.9) * (386.8 - 386.8) + (281.9 + 281.9) * (386.8 - 791) + (281.9 + 3.7) * (791 - 791) + (3.7 + 3.7) * (791 - 188.7) + (3.7 + 118.1) * (188.7 - 188.7)) * 0.5 * 0.00694  \end{aligned}  $



# 2744 West Pinewood Road, Chester, Chester County, South Carolina, United States, 29706

Total area: 3688 sq. ft

Gross living area: 3367 sq. ft

Finished area: 3367 sq. ft

Non-standard finished area: 0 sq. ft

## Level 2

Space	Area (sq. ft)	Calculation <small>Coordinate Polygon Area Algorithm using inches</small>
Finished Area	1834	$\begin{aligned} & -((244.5 + 267) * (158.3 - 180.8) + (267 + 348.8) * (180.8 - 180.8) + (348.8 + 356.8) * (180.8 - 188.7) + (356.8 + 356.8) * (188.7 - 290.6) + (356.8 + 541.8) * (290.6 - 290.6) + (541.8 + 541.8) * \\ & (290.6 - 188.7) + (541.8 + 549.7) * (188.7 - 180.8) + (549.7 + 699.7) * (180.8 - 180.8) + (699.7 + 699.7) * (180.8 - 289.8) + (699.7 + 722.6) * (289.8 - 289.8) + (722.6 + 722.6) * (289.8 - 485.6) + \\ & (722.6 + 699.7) * (485.6 - 485.6) + (699.7 + 699.7) * (485.6 - 591.5) + (699.7 + 545.8) * (591.5 - 591.5) + (545.8 + 545.8) * (591.5 - 583.5) + (545.8 + 541.8) * (583.5 - 583.5) + (541.8 + 541.8) * \\ & (583.5 - 361.6) + (541.8 + 521.2) * (361.6 - 341.5) + (521.2 + 477) * (341.5 - 341.5) + (477 + 477) * (341.5 - 484.3) + (477 + 433.2) * (484.3 - 484.3) + (433.2 + 433.2) * (484.3 - 583.5) + (433.2 + 429.2) * (583.5 - 583.5) + (429.2 + 429.2) * (583.5 - 591.5) + (429.2 + 281.9) * (591.5 - 591.5) + \\ & (281.9 + 281.9) * (591.5 - 543.9) + (281.9 + 206.8) * (543.9 - 543.9) + (206.8 + 206.8) * (543.9 - 676.9) + (206.8 + 166.7) * (676.9 - 676.9) + (166.7 + 166.7) * (676.9 - 799) + (166.7 + 118.1) * \\ & (799 - 799) + (118.1 + 118.1) * (799 - 676.9) + (118.1 + 77.6) * (676.9 - 676.9) + (77.6 + 77.6) * (676.9 - 543.9) + (77.6 + -4.3) * (543.9 - 543.9) + (-4.3 + -4.3) * (543.9 - 180.8) + (-4.3 + 150.4) * \\ & (180.8 - 180.8) + (150.4 + 172.9) * (180.8 - 158.3) + (172.9 + 244.5) * (158.3 - 158.3) * 0.5 * \\ & 0.00694 \end{aligned}$

# 2744 West Pinewood Road, Chester, Chester County, South Carolina, United States, 29706

Total area: 3688 sq. ft  
Gross living area: 3367 sq. ft

Finished area: 3367 sq. ft  
Non-standard finished area: 0 sq. ft

## Property UPD

Data	Value
Structure	1
Unit	1
Level Number	1
Below Grade	false
Level Low Ceiling	false
ADU Indicator	false
Total Area	1854
Finished Area	1533
Non-Standard Finished Area	0
Structure	1
Unit	1
Level Number	2
Below Grade	false
Level Low Ceiling	false
ADU Indicator	false
Total Area	1834
Finished Area	1834
Non-Standard Finished Area	0