

Home data report

**375 Chestnut Creek Drive, Westlake Corner, Hardy, Franklin
County, Virginia, United States, 24101**



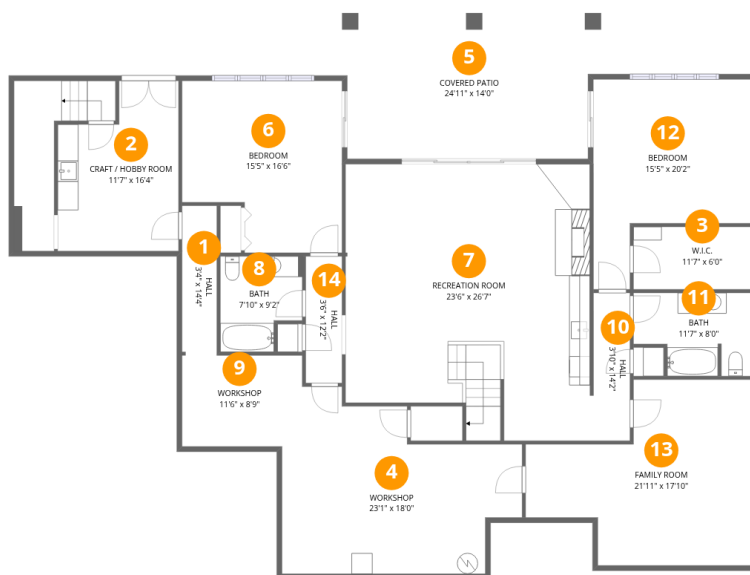
1
Half baths



1
Garages

Home data report

375 Chestnut Creek Drive, Westlake Corner, Hardy, Franklin County, Virginia, United States, 24101



Room dimensions

Floor 1 Below grade

Total:2488sqft

Excluded: 335sqft

#		Dimensions	sqft	Counted as living area
1	Hall	3'4" x 14'4"	48 sq. ft	Yes
2	Craft / Hobby Room	11'7" x 16'4"	190 sq. ft	Yes
3	W.I.C.	11'7" x 6'0"	70 sq. ft	Yes
4	Workshop	23'1" x 18'0"	415 sq. ft	Yes
5	Covered Patio	24'11" x 14'0"	348 sq. ft	No
6	Bedroom	15'5" x 16'6"	254 sq. ft	Yes
7	Recreation Room	23'6" x 26'7"	624 sq. ft	Yes
8	Bath	7'10" x 9'2"	72 sq. ft	Yes
9	Workshop	11'6" x 8'9"	101 sq. ft	Yes
10	Hall	3'10" x 14'2"	55 sq. ft	Yes
11	Bath	11'7" x 8'0"	93 sq. ft	Yes

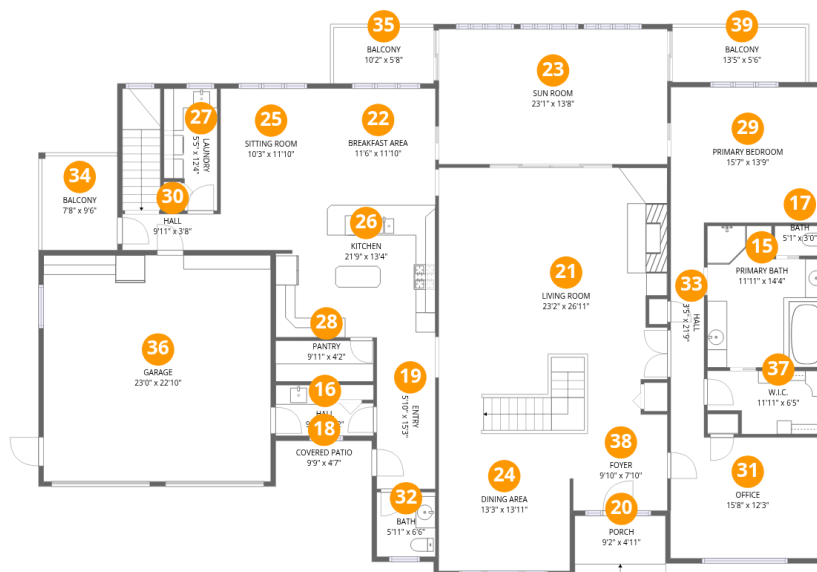
Home data report

375 Chestnut Creek Drive, Westlake Corner, Hardy, Franklin County, Virginia, United States, 24101

#		Dimensions	sqft	Counted as living area
12	Bedroom	15'5" x 20'2"	312 sq. ft	Yes
13	Family Room	21'11" x 17'10"	392 sq. ft	Yes
14	Hall	3'6" x 12'2"	42 sq. ft	Yes

Home data report

375 Chestnut Creek Drive, Westlake Corner, Hardy, Franklin County, Virginia, United States, 24101



Room dimensions

Floor 2

Total:2877sqft Excluded: 833sqft

#		Dimensions	sqft	Counted as living area
15	Primary Bath	11'11" x 14'4"	170 sq. ft	Yes
16	Hall	9'11" x 5'2"	51 sq. ft	Yes
17	Bath	5'1" x 3'0"	15 sq. ft	Yes
18	Covered Patio	9'9" x 4'7"	45 sq. ft	No
19	Entry	5'10" x 15'3"	89 sq. ft	Yes
20	Porch	9'2" x 4'11"	45 sq. ft	No
21	Living Room	23'2" x 26'11"	623 sq. ft	Yes
22	Breakfast Area	11'6" x 11'10"	136 sq. ft	Yes
23	Sun Room	23'1" x 13'8"	316 sq. ft	Yes
24	Dining Area	13'3" x 13'11"	185 sq. ft	Yes
25	Sitting Room	10'3" x 11'10"	121 sq. ft	Yes

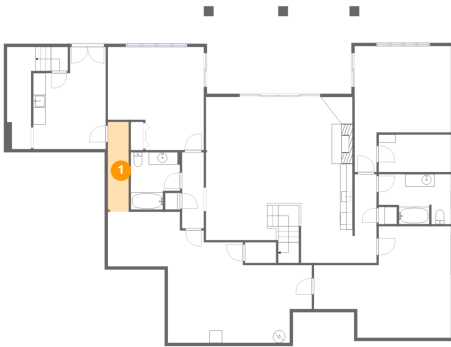
Home data report

**375 Chestnut Creek Drive, Westlake Corner, Hardy, Franklin
County, Virginia, United States, 24101**

#		Dimensions	sqft	Counted as living area
26	Kitchen	21'9" x 13'4"	291 sq. ft	Yes
27	Laundry	5'5" x 12'4"	67 sq. ft	Yes
28	Pantry	9'11" x 4'2"	41 sq. ft	Yes
29	Primary Bedroom	15'7" x 13'9"	214 sq. ft	Yes
30	Hall	9'11" x 3'8"	36 sq. ft	Yes
31	Office	15'8" x 12'3"	191 sq. ft	Yes
32	Bath	5'11" x 6'6"	39 sq. ft	Yes
33	Hall	3'5" x 21'9"	73 sq. ft	Yes
34	Balcony	7'8" x 9'6"	73 sq. ft	No
35	Balcony	10'2" x 5'8"	58 sq. ft	No
36	Garage	23'0" x 22'10"	526 sq. ft	No
37	W.I.C.	11'11" x 6'5"	76 sq. ft	Yes
38	Foyer	9'10" x 7'10"	77 sq. ft	Yes
39	Balcony	13'5" x 5'6"	74 sq. ft	No

375 Chestnut Creek Drive, Westlake Corner, Hardy, Franklin County, Virginia, United States, 24101

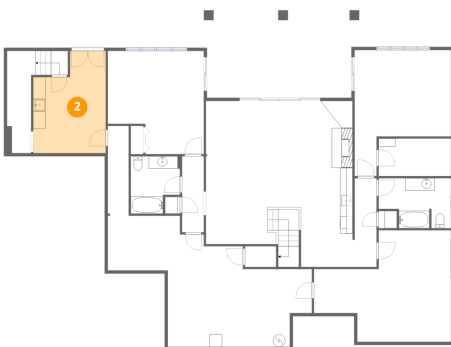
1 Floor 1 - Hall



Dimensions: 3'4" x 14'4"
Area: 48 sq. ft
Counted as living area: Yes

Heated: Yes
Finished: Yes
Enclosed: Yes
Contiguous: Yes
Permitted: Yes
Wet space: No
Addition: No
Conversion: No

2 Floor 1 - Craft / Hobby Room

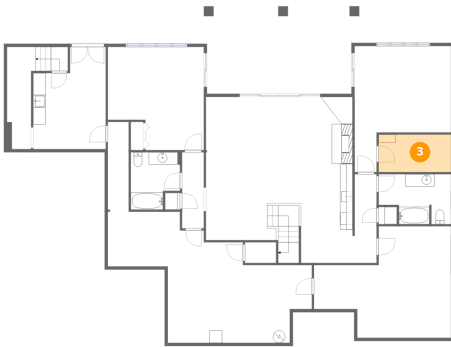


Dimensions: 11'7" x 16'4"
Area: 190 sq. ft
Counted as living area: No

Heated: Yes
Finished: Yes
Enclosed: Yes
Contiguous: No
Permitted: Yes
Wet space: No
Addition: No
Conversion: No

375 Chestnut Creek Drive, Westlake Corner, Hardy, Franklin County, Virginia, United States, 24101

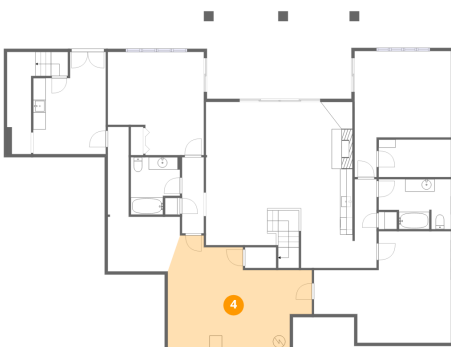
3 Floor 1 - W.I.C.



Dimensions: 11'7" x 6'0"
Area: 70 sq. ft
Counted as living area: Yes

Heated: Yes
Finished: Yes
Enclosed: Yes
Contiguous: Yes
Permitted: Yes
Wet space: No
Addition: No
Conversion: No

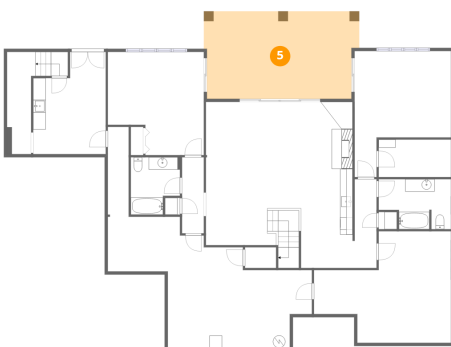
4 Floor 1 - Workshop



Dimensions: 23'1" x 18'0"
Area: 415 sq. ft
Counted as living area: No

Heated: Yes
Finished: Yes
Enclosed: Yes
Contiguous: No
Permitted: Yes
Wet space: No
Addition: No
Conversion: No

5 Floor 1 - Covered Patio

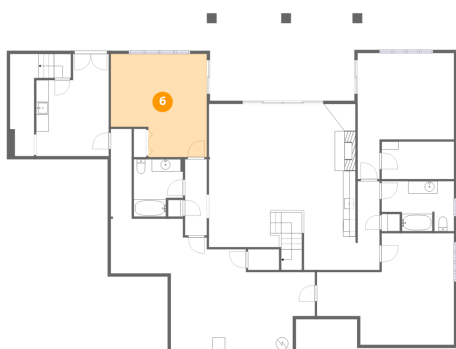


Dimensions: 24'11" x 14'0"
Area: 348 sq. ft
Counted as living area: No

Heated: No
Finished: No
Enclosed: No
Contiguous: Yes
Permitted: Yes
Wet space: No
Addition: No
Conversion: No

375 Chestnut Creek Drive, Westlake Corner, Hardy, Franklin County, Virginia, United States, 24101

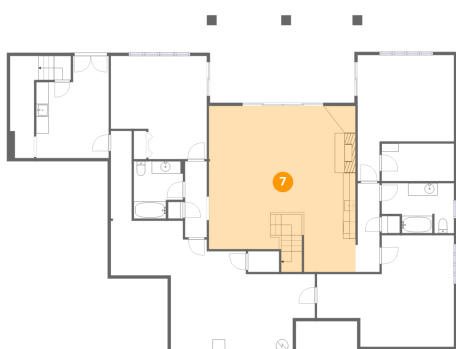
6 Floor 1 - Bedroom



Dimensions: 15'5" x 16'6"
Area: 254 sq. ft
Counted as living area: Yes

Heated: Yes
Finished: Yes
Enclosed: Yes
Contiguous: Yes
Permitted: Yes
Wet space: No
Addition: No
Conversion: No

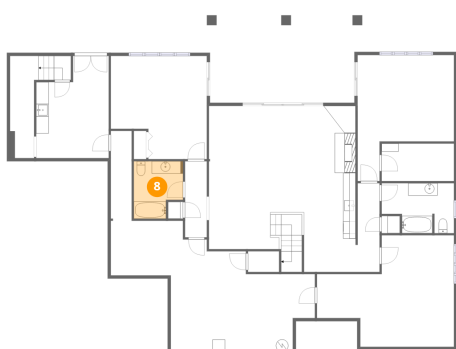
7 Floor 1 - Recreation Room



Dimensions: 23'6" x 26'7"
Area: 624 sq. ft
Counted as living area: Yes

Heated: Yes
Finished: Yes
Enclosed: Yes
Contiguous: Yes
Permitted: Yes
Wet space: No
Addition: No
Conversion: No

8 Floor 1 - Bath

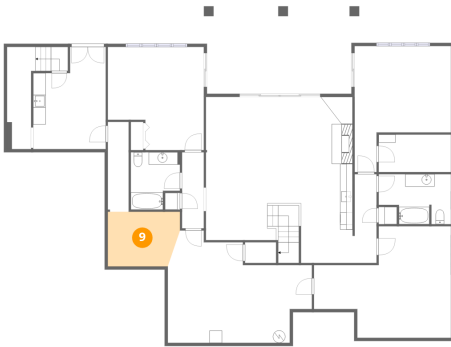


Dimensions: 7'10" x 9'2"
Area: 72 sq. ft
Counted as living area: Yes

Heated: Yes
Finished: Yes
Enclosed: Yes
Contiguous: Yes
Permitted: Yes
Wet space: Yes
Addition: No
Conversion: No

375 Chestnut Creek Drive, Westlake Corner, Hardy, Franklin County, Virginia, United States, 24101

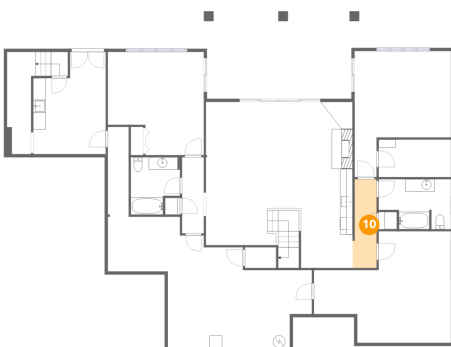
9 Floor 1 - Workshop



Dimensions: 11'6" x 8'9"
Area: 101 sq. ft
Counted as living area: No

Heated: Yes
Finished: Yes
Enclosed: Yes
Contiguous: No
Permitted: Yes
Wet space: No
Addition: No
Conversion: No

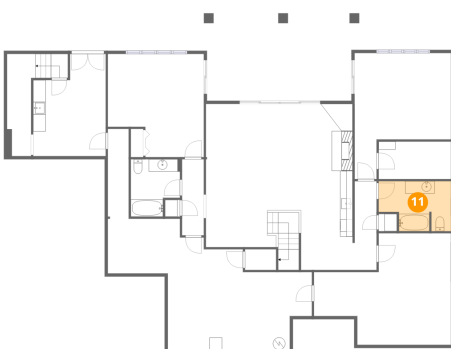
10 Floor 1 - Hall



Dimensions: 3'10" x 14'2"
Area: 55 sq. ft
Counted as living area: Yes

Heated: Yes
Finished: Yes
Enclosed: Yes
Contiguous: Yes
Permitted: Yes
Wet space: No
Addition: No
Conversion: No

11 Floor 1 - Bath

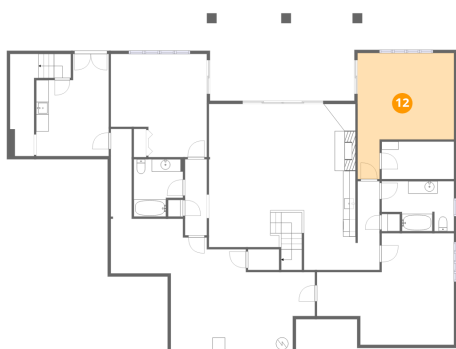


Dimensions: 11'7" x 8'0"
Area: 93 sq. ft
Counted as living area: Yes

Heated: Yes
Finished: Yes
Enclosed: Yes
Contiguous: Yes
Permitted: Yes
Wet space: Yes
Addition: No
Conversion: No

375 Chestnut Creek Drive, Westlake Corner, Hardy, Franklin County, Virginia, United States, 24101

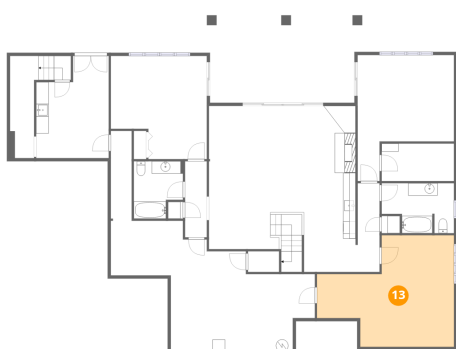
12 Floor 1 - Bedroom



Dimensions: 15'5" x 20'2"
Area: 312 sq. ft
Counted as living area: Yes

Heated: Yes
Finished: Yes
Enclosed: Yes
Contiguous: Yes
Permitted: Yes
Wet space: No
Addition: No
Conversion: No

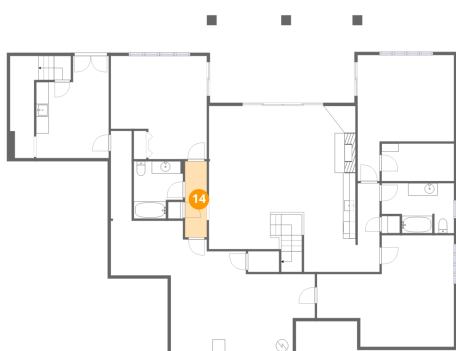
13 Floor 1 - Family Room



Dimensions: 21'11" x 17'10"
Area: 392 sq. ft
Counted as living area: Yes

Heated: Yes
Finished: Yes
Enclosed: Yes
Contiguous: Yes
Permitted: Yes
Wet space: No
Addition: No
Conversion: No

14 Floor 1 - Hall



Dimensions: 3'6" x 12'2"
Area: 42 sq. ft
Counted as living area: Yes

Heated: Yes
Finished: Yes
Enclosed: Yes
Contiguous: Yes
Permitted: Yes
Wet space: No
Addition: No
Conversion: No

375 Chestnut Creek Drive, Westlake Corner, Hardy, Franklin County, Virginia, United States, 24101

15 Floor 2 - Primary Bath



Dimensions: 11'11" x 14'4"
Area: 170 sq. ft
Counted as living area: Yes

Heated: Yes
Finished: Yes
Enclosed: Yes
Contiguous: Yes
Permitted: Yes
Wet space: Yes
Addition: No
Conversion: No

16 Floor 2 - Hall



Dimensions: 9'11" x 5'2"
Area: 51 sq. ft
Counted as living area: Yes

Heated: Yes
Finished: Yes
Enclosed: Yes
Contiguous: Yes
Permitted: Yes
Wet space: No
Addition: No
Conversion: No

17 Floor 2 - Bath

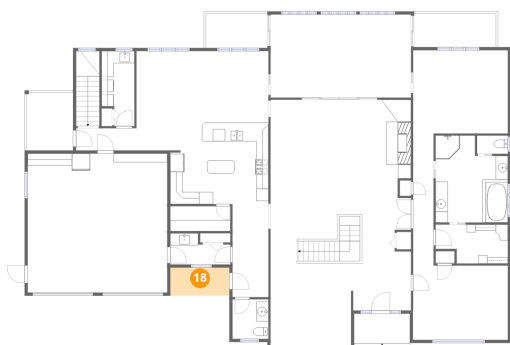


Dimensions: 5'1" x 3'0"
Area: 15 sq. ft
Counted as living area: Yes

Heated: Yes
Finished: Yes
Enclosed: Yes
Contiguous: Yes
Permitted: Yes
Wet space: Yes
Addition: No
Conversion: No

375 Chestnut Creek Drive, Westlake Corner, Hardy, Franklin County, Virginia, United States, 24101

18 Floor 2 - Covered Patio



Dimensions: 9'9" x 4'7"
Area: 45 sq. ft
Counted as living area: No

Heated: No
Finished: No
Enclosed: No
Contiguous: Yes
Permitted: Yes
Wet space: No
Addition: No
Conversion: No

19 Floor 2 - Entry



Dimensions: 5'10" x 15'3"
Area: 89 sq. ft
Counted as living area: Yes

Heated: Yes
Finished: Yes
Enclosed: Yes
Contiguous: Yes
Permitted: Yes
Wet space: No
Addition: No
Conversion: No

20 Floor 2 - Porch

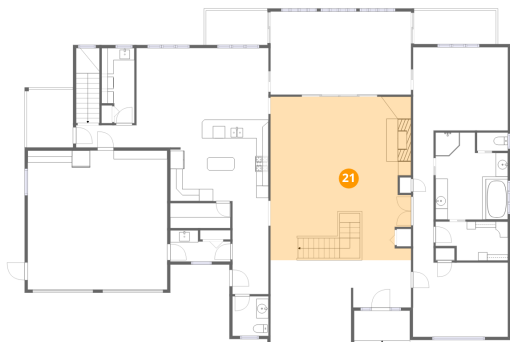


Dimensions: 9'2" x 4'11"
Area: 45 sq. ft
Counted as living area: No

Heated: No
Finished: No
Enclosed: No
Contiguous: Yes
Permitted: Yes
Wet space: No
Addition: No
Conversion: No

375 Chestnut Creek Drive, Westlake Corner, Hardy, Franklin County, Virginia, United States, 24101

21 Floor 2 - Living Room



Dimensions: 23'2" x 26'11"
Area: 623 sq. ft
Counted as living area: Yes

Heated: Yes
Finished: Yes
Enclosed: Yes
Contiguous: Yes
Permitted: Yes
Wet space: No
Addition: No
Conversion: No

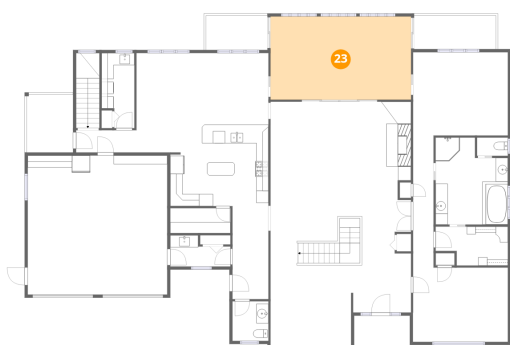
22 Floor 2 - Breakfast Area



Dimensions: 11'6" x 11'10"
Area: 136 sq. ft
Counted as living area: Yes

Heated: Yes
Finished: Yes
Enclosed: Yes
Contiguous: Yes
Permitted: Yes
Wet space: No
Addition: No
Conversion: No

23 Floor 2 - Sun Room

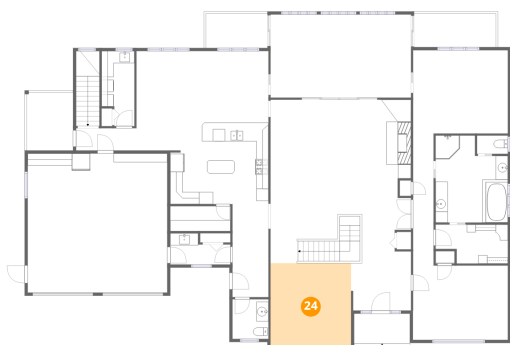


Dimensions: 23'1" x 13'8"
Area: 316 sq. ft
Counted as living area: Yes

Heated: Yes
Finished: Yes
Enclosed: Yes
Contiguous: Yes
Permitted: Yes
Wet space: No
Addition: No
Conversion: No

375 Chestnut Creek Drive, Westlake Corner, Hardy, Franklin County, Virginia, United States, 24101

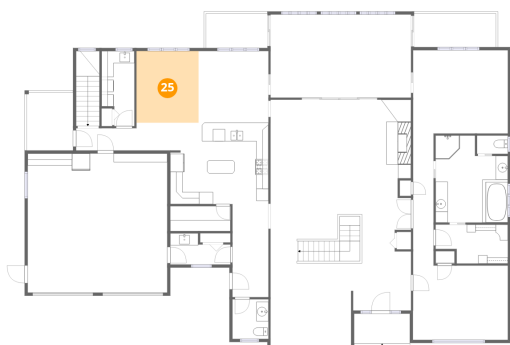
24 Floor 2 - Dining Area



Dimensions: 13'3" x 13'11"
Area: 185 sq. ft
Counted as living area: Yes

Heated: Yes
Finished: Yes
Enclosed: Yes
Contiguous: Yes
Permitted: Yes
Wet space: No
Addition: No
Conversion: No

25 Floor 2 - Sitting Room



Dimensions: 10'3" x 11'10"
Area: 121 sq. ft
Counted as living area: Yes

Heated: Yes
Finished: Yes
Enclosed: Yes
Contiguous: Yes
Permitted: Yes
Wet space: No
Addition: No
Conversion: No

26 Floor 2 - Kitchen



Dimensions: 21'9" x 13'4"
Area: 291 sq. ft
Counted as living area: Yes

Heated: Yes
Finished: Yes
Enclosed: Yes
Contiguous: Yes
Permitted: Yes
Wet space: No
Addition: No
Conversion: No

375 Chestnut Creek Drive, Westlake Corner, Hardy, Franklin County, Virginia, United States, 24101

27 Floor 2 - Laundry



Dimensions: 5'5" x 12'4"
Area: 67 sq. ft
Counted as living area: Yes

Heated: Yes
Finished: Yes
Enclosed: Yes
Contiguous: Yes
Permitted: Yes
Wet space: No
Addition: No
Conversion: No

28 Floor 2 - Pantry



Dimensions: 9'11" x 4'2"
Area: 41 sq. ft
Counted as living area: Yes

Heated: Yes
Finished: Yes
Enclosed: Yes
Contiguous: Yes
Permitted: Yes
Wet space: No
Addition: No
Conversion: No

29 Floor 2 - Primary Bedroom



Dimensions: 15'7" x 13'9"
Area: 214 sq. ft
Counted as living area: Yes

Heated: Yes
Finished: Yes
Enclosed: Yes
Contiguous: Yes
Permitted: Yes
Wet space: No
Addition: No
Conversion: No

375 Chestnut Creek Drive, Westlake Corner, Hardy, Franklin County, Virginia, United States, 24101

30 Floor 2 - Hall



Dimensions: 9'11" x 3'8"
Area: 36 sq. ft
Counted as living area: Yes

Heated: Yes
Finished: Yes
Enclosed: Yes
Contiguous: Yes
Permitted: Yes
Wet space: No
Addition: No
Conversion: No

31 Floor 2 - Office



Dimensions: 15'8" x 12'3"
Area: 191 sq. ft
Counted as living area: Yes

Heated: Yes
Finished: Yes
Enclosed: Yes
Contiguous: Yes
Permitted: Yes
Wet space: No
Addition: No
Conversion: No

32 Floor 2 - Bath



Dimensions: 5'11" x 6'6"
Area: 39 sq. ft
Counted as living area: Yes

Heated: Yes
Finished: Yes
Enclosed: Yes
Contiguous: Yes
Permitted: Yes
Wet space: Yes
Addition: No
Conversion: No

375 Chestnut Creek Drive, Westlake Corner, Hardy, Franklin County, Virginia, United States, 24101

33 Floor 2 - Hall



Dimensions: 3'5" x 21'9"
Area: 73 sq. ft
Counted as living area: Yes

Heated: Yes
Finished: Yes
Enclosed: Yes
Contiguous: Yes
Permitted: Yes
Wet space: No
Addition: No
Conversion: No

34 Floor 2 - Balcony



Dimensions: 7'8" x 9'6"
Area: 73 sq. ft
Counted as living area: No

Heated: No
Finished: No
Enclosed: No
Contiguous: Yes
Permitted: Yes
Wet space: No
Addition: No
Conversion: No

35 Floor 2 - Balcony

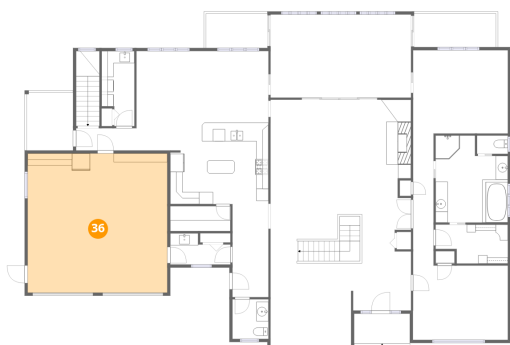


Dimensions: 10'2" x 5'8"
Area: 58 sq. ft
Counted as living area: No

Heated: No
Finished: No
Enclosed: No
Contiguous: Yes
Permitted: Yes
Wet space: No
Addition: No
Conversion: No

375 Chestnut Creek Drive, Westlake Corner, Hardy, Franklin County, Virginia, United States, 24101

36 Floor 2 - Garage



Dimensions: 23'0" x 22'10"
Area: 526 sq. ft
Counted as living area: No

Heated: No
Finished: No
Enclosed: Yes
Contiguous: Yes
Permitted: Yes
Wet space: No
Addition: No
Conversion: No

37 Floor 2 - W.I.C.



Dimensions: 11'11" x 6'5"
Area: 76 sq. ft
Counted as living area: Yes

Heated: Yes
Finished: Yes
Enclosed: Yes
Contiguous: Yes
Permitted: Yes
Wet space: No
Addition: No
Conversion: No

38 Floor 2 - Foyer



Dimensions: 9'10" x 7'10"
Area: 77 sq. ft
Counted as living area: Yes

Heated: Yes
Finished: Yes
Enclosed: Yes
Contiguous: Yes
Permitted: Yes
Wet space: No
Addition: No
Conversion: No

375 Chestnut Creek Drive, Westlake Corner, Hardy, Franklin
County, Virginia, United States, 24101

39 Floor 2 - Balcony



Dimensions: 13'5" x 5'6"
Area: 74 sq. ft
Counted as living area: No

Heated: No
Finished: No
Enclosed: No
Contiguous: Yes
Permitted: Yes
Wet space: No
Addition: No
Conversion: No