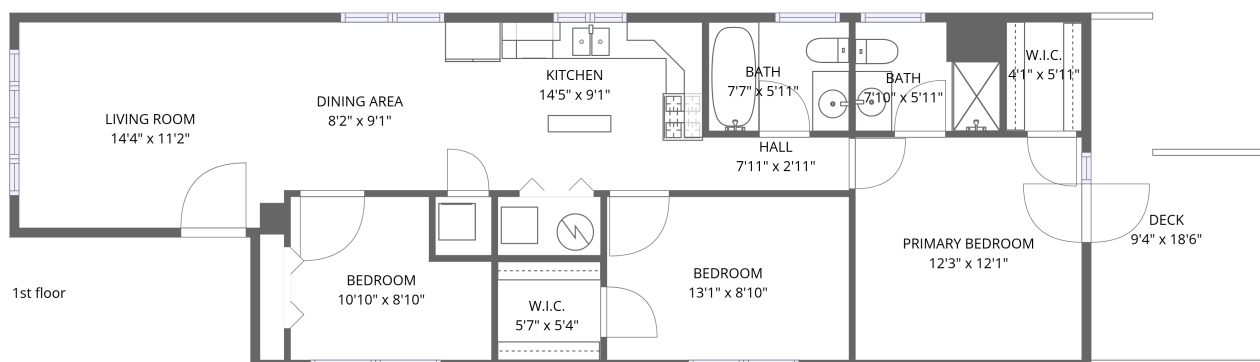


Home data report

1333 North Bosworth Avenue, Noble Square, Chicago, Cook County, Illinois, United States, 60642, 2




Total Area: 960 sq. ft

1st Floor: 960 sq. ft

Excluded: Deck 128 sq. ft, Walls: 0 sq. ft

Property summary

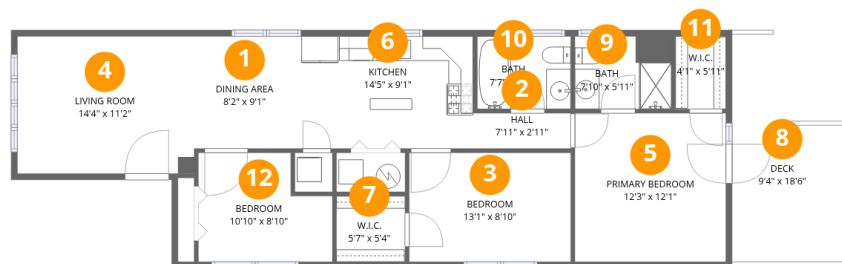
 **1** Floors

 **3** Bedrooms

 **2** Bathrooms

Home data report

1333 North Bosworth Avenue, Noble Square, Chicago, Cook County, Illinois, United States, 60642, 2



Room dimensions

Floor 1

Total:960sqft Excluded: 128sqft

#		Dimensions	sqft	Counted as living area
1	Dining Area	8'2" x 9'1"	75 sq. ft	Yes
2	Hall	7'11" x 2'11"	23 sq. ft	Yes
3	Bedroom	13'1" x 8'10"	116 sq. ft	Yes
4	Living Room	14'4" x 11'2"	160 sq. ft	Yes
5	Primary Bedroom	12'3" x 12'1"	148 sq. ft	Yes
6	Kitchen	14'5" x 9'1"	132 sq. ft	Yes
7	W.I.C.	5'7" x 5'4"	30 sq. ft	Yes
8	Deck	9'4" x 18'6"	128 sq. ft	No
9	Bath	7'10" x 5'11"	40 sq. ft	Yes
10	Bath	7'7" x 5'11"	45 sq. ft	Yes
11	W.I.C.	4'1" x 5'11"	24 sq. ft	Yes

Home data report

1333 North Bosworth Avenue, Noble Square, Chicago, Cook County, Illinois, United States, 60642, 2

#		Dimensions	sqft	Counted as living area
12	Bedroom	10'10" x 8'10"	84 sq. ft	Yes

1333 North Bosworth Avenue, Noble Square, Chicago, Cook County, Illinois, United States, 60642, 2

1 Floor 1 - Dining Area



Dimensions: 8'2" x 9'1"
Area: 75 sq. ft
Counted as living area: Yes

Heated: Yes
Finished: Yes
Enclosed: Yes
Contiguous: Yes
Permitted: Yes
Wet space: No
Addition: No
Conversion: No

2 Floor 1 - Hall



Dimensions: 7'11" x 2'11"
Area: 23 sq. ft
Counted as living area: Yes

Heated: Yes
Finished: Yes
Enclosed: Yes
Contiguous: Yes
Permitted: Yes
Wet space: No
Addition: No
Conversion: No

1333 North Bosworth Avenue, Noble Square, Chicago, Cook County, Illinois, United States, 60642, 2

3 Floor 1 - Bedroom



Dimensions: 13'1" x 8'10"
Area: 116 sq. ft
Counted as living area: Yes

Heated: Yes
Finished: Yes
Enclosed: Yes
Contiguous: Yes
Permitted: Yes
Wet space: No
Addition: No
Conversion: No

4 Floor 1 - Living Room



Dimensions: 14'4" x 11'2"
Area: 160 sq. ft
Counted as living area: Yes

Heated: Yes
Finished: Yes
Enclosed: Yes
Contiguous: Yes
Permitted: Yes
Wet space: No
Addition: No
Conversion: No

5 Floor 1 - Primary Bedroom



Dimensions: 12'3" x 12'1"
Area: 148 sq. ft
Counted as living area: Yes

Heated: Yes
Finished: Yes
Enclosed: Yes
Contiguous: Yes
Permitted: Yes
Wet space: No
Addition: No
Conversion: No

1333 North Bosworth Avenue, Noble Square, Chicago, Cook County, Illinois, United States, 60642, 2

6 Floor 1 - Kitchen



Dimensions: 14'5" x 9'1"
Area: 132 sq. ft
Counted as living area: Yes

Heated: Yes
Finished: Yes
Enclosed: Yes
Contiguous: Yes
Permitted: Yes
Wet space: No
Addition: No
Conversion: No

7 Floor 1 - W.I.C.



Dimensions: 5'7" x 5'4"
Area: 30 sq. ft
Counted as living area: Yes

Heated: Yes
Finished: Yes
Enclosed: Yes
Contiguous: Yes
Permitted: Yes
Wet space: No
Addition: No
Conversion: No

8 Floor 1 - Deck



Dimensions: 9'4" x 18'6"
Area: 128 sq. ft
Counted as living area: No

Heated: No
Finished: No
Enclosed: No
Contiguous: Yes
Permitted: Yes
Wet space: No
Addition: No
Conversion: No

1333 North Bosworth Avenue, Noble Square, Chicago, Cook County, Illinois, United States, 60642, 2

9 Floor 1 - Bath



Dimensions: 7'10" x 5'11"
Area: 40 sq. ft
Counted as living area: Yes

Heated: Yes
Finished: Yes
Enclosed: Yes
Contiguous: Yes
Permitted: Yes
Wet space: Yes
Addition: No
Conversion: No

10 Floor 1 - Bath



Dimensions: 7'7" x 5'11"
Area: 45 sq. ft
Counted as living area: Yes

Heated: Yes
Finished: Yes
Enclosed: Yes
Contiguous: Yes
Permitted: Yes
Wet space: Yes
Addition: No
Conversion: No

11 Floor 1 - W.I.C.



Dimensions: 4'1" x 5'11"
Area: 24 sq. ft
Counted as living area: Yes

Heated: Yes
Finished: Yes
Enclosed: Yes
Contiguous: Yes
Permitted: Yes
Wet space: No
Addition: No
Conversion: No

Home data report

1333 North Bosworth Avenue, Noble Square, Chicago, Cook County, Illinois, United States, 60642, 2

12 Floor 1 - Bedroom



Dimensions: 10'10" x 8'10"
Area: 84 sq. ft
Counted as living area: Yes

Heated: Yes
Finished: Yes
Enclosed: Yes
Contiguous: Yes
Permitted: Yes
Wet space: No
Addition: No
Conversion: No