

TOTAL: 1813 sq. ft

BELOW GRADE: 346 sq. ft, 1st floor: 364 sq. ft, 2nd floor: 586 sq. ft, 3rd floor: 517 sq. ft

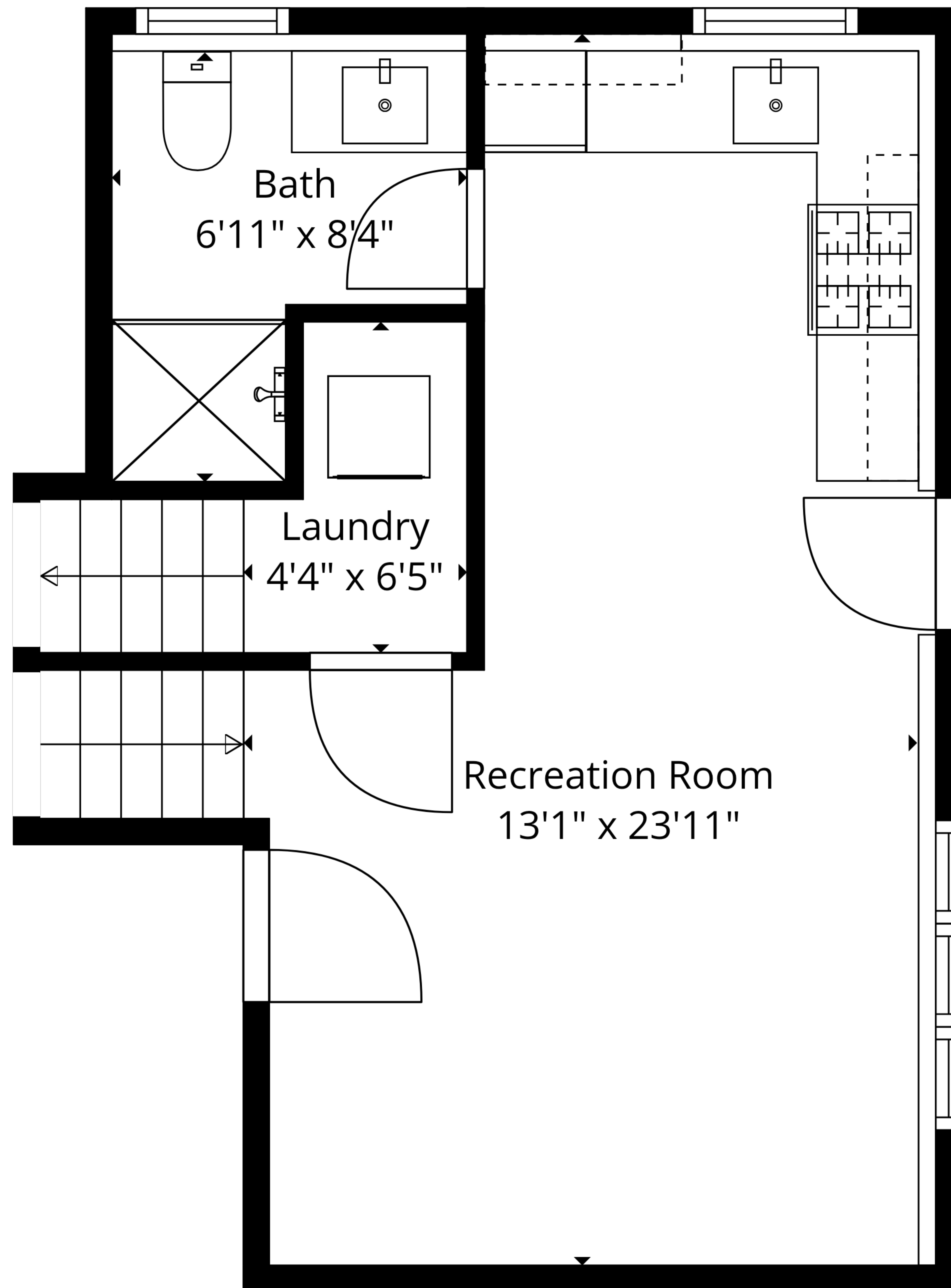
EXCLUDED AREAS: UTILITY: 71 sq. ft, DECK: 52 sq. ft, FIREPLACE: 12 sq. ft,

OPEN TO BELOW: 220 sq. ft, WALLS: 211 sq. ft



Floor Plans Are Intended To Give a General Indication Of The Property Layout. Sizes And Dimensions Are Estimate, Actual May Vary.





TOTAL: 1813 sq. ft

BELOW GRADE: 346 sq. ft, 1st floor: 364 sq. ft, 2nd floor: 586 sq. ft, 3rd floor: 517 sq. ft

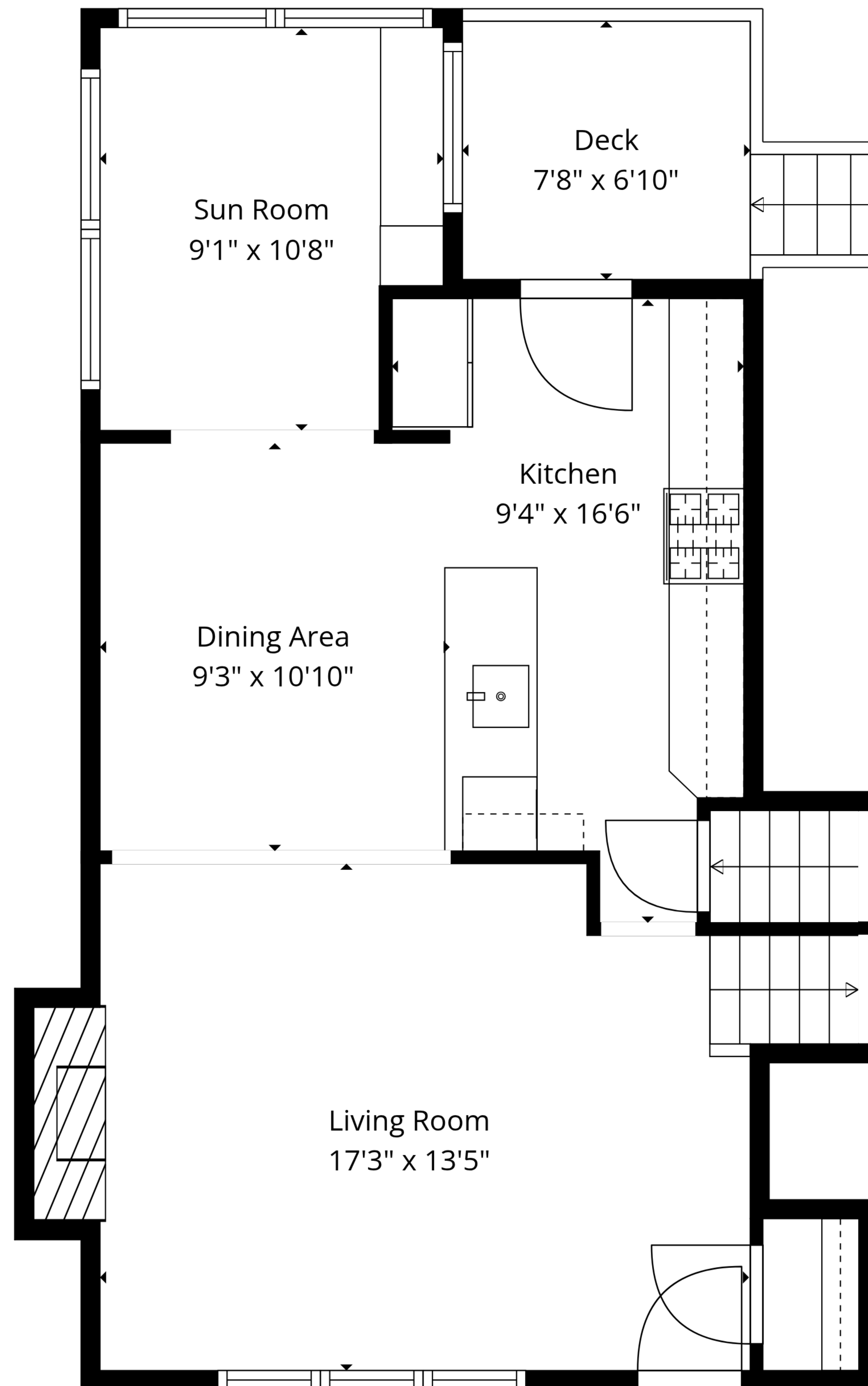
EXCLUDED AREAS: UTILITY: 71 sq. ft, DECK: 52 sq. ft, FIREPLACE: 12 sq. ft,

OPEN TO BELOW: 220 sq. ft, WALLS: 211 sq. ft



Floor Plans Are Intended To Give a General Indication Of The Property Layout. Sizes And Dimensions Are Estimate, Actual May Vary.





TOTAL: 1813 sq. ft

BELOW GRADE: 346 sq. ft, 1st floor: 364 sq. ft, 2nd floor: 586 sq. ft, 3rd floor: 517 sq. ft

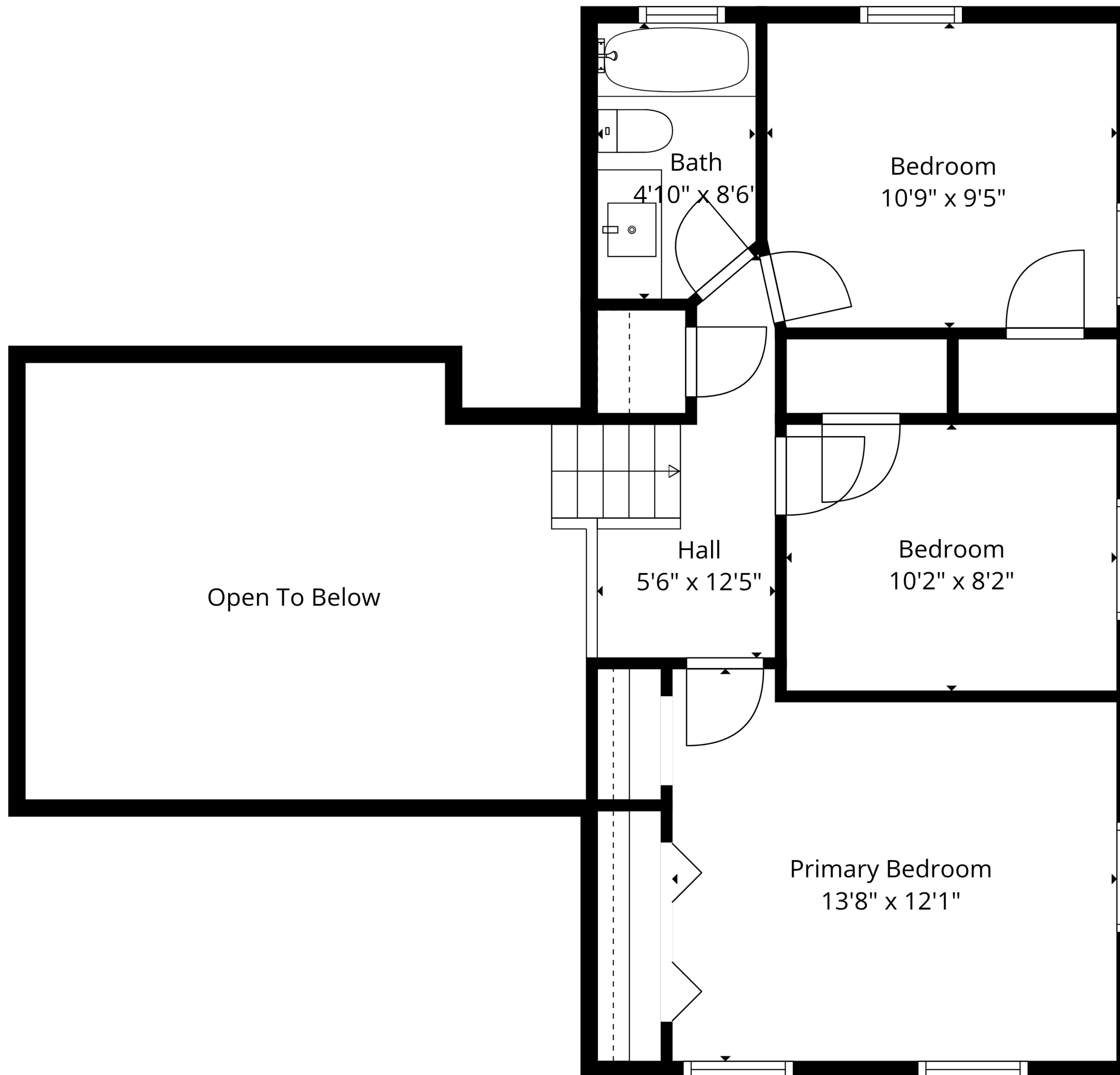
EXCLUDED AREAS: UTILITY: 71 sq. ft, DECK: 52 sq. ft, FIREPLACE: 12 sq. ft,

OPEN TO BELOW: 220 sq. ft, WALLS: 211 sq. ft



Floor Plans Are Intended To Give a General Indication Of The Property Layout. Sizes And Dimensions Are Estimate, Actual May Vary.





TOTAL: 1813 sq. ft

BELOW GRADE: 346 sq. ft, 1st floor: 364 sq. ft, 2nd floor: 586 sq. ft, 3rd floor: 517 sq. ft

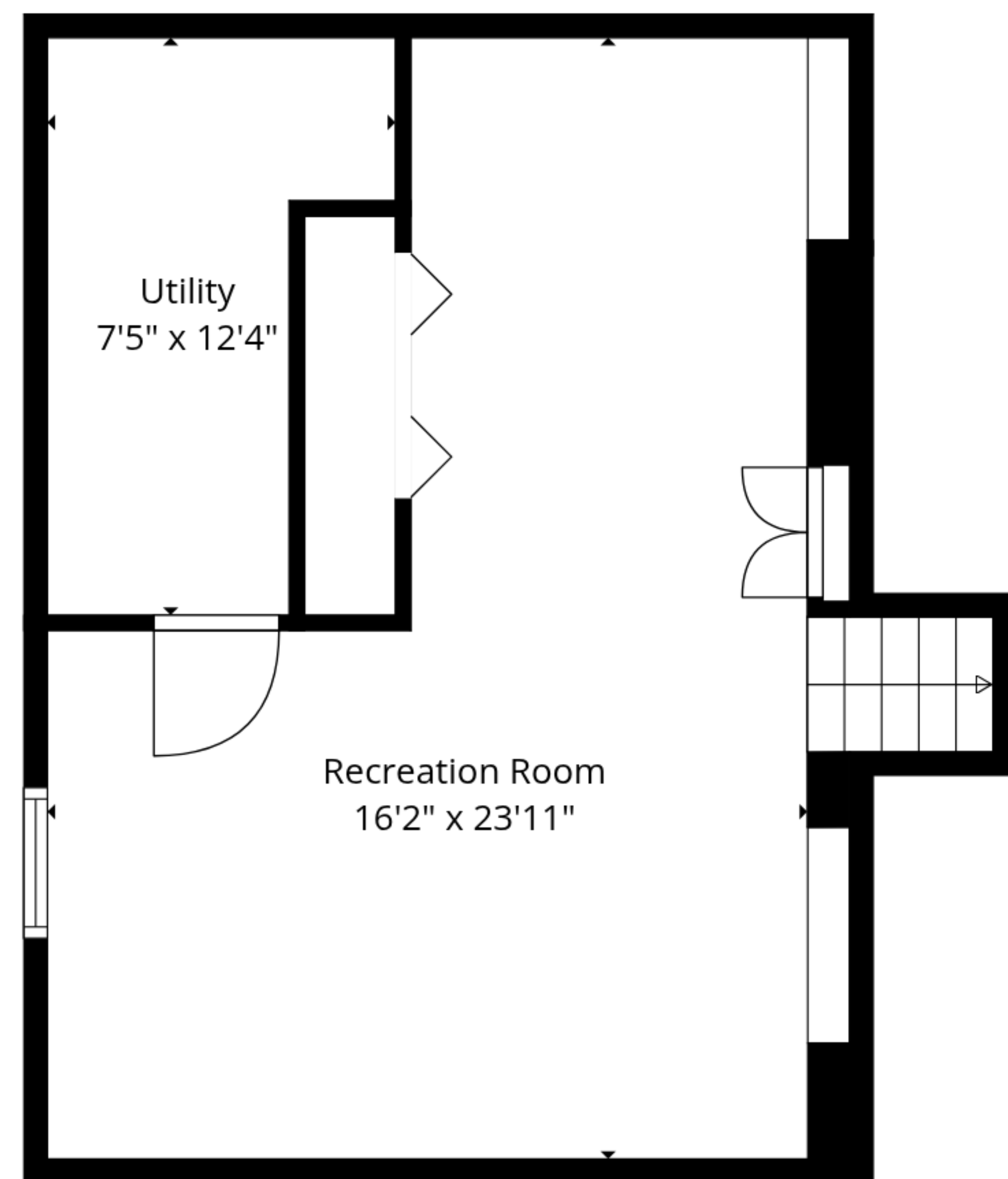
EXCLUDED AREAS: UTILITY: 71 sq. ft, DECK: 52 sq. ft, FIREPLACE: 12 sq. ft,

OPEN TO BELOW: 220 sq. ft, WALLS: 211 sq. ft

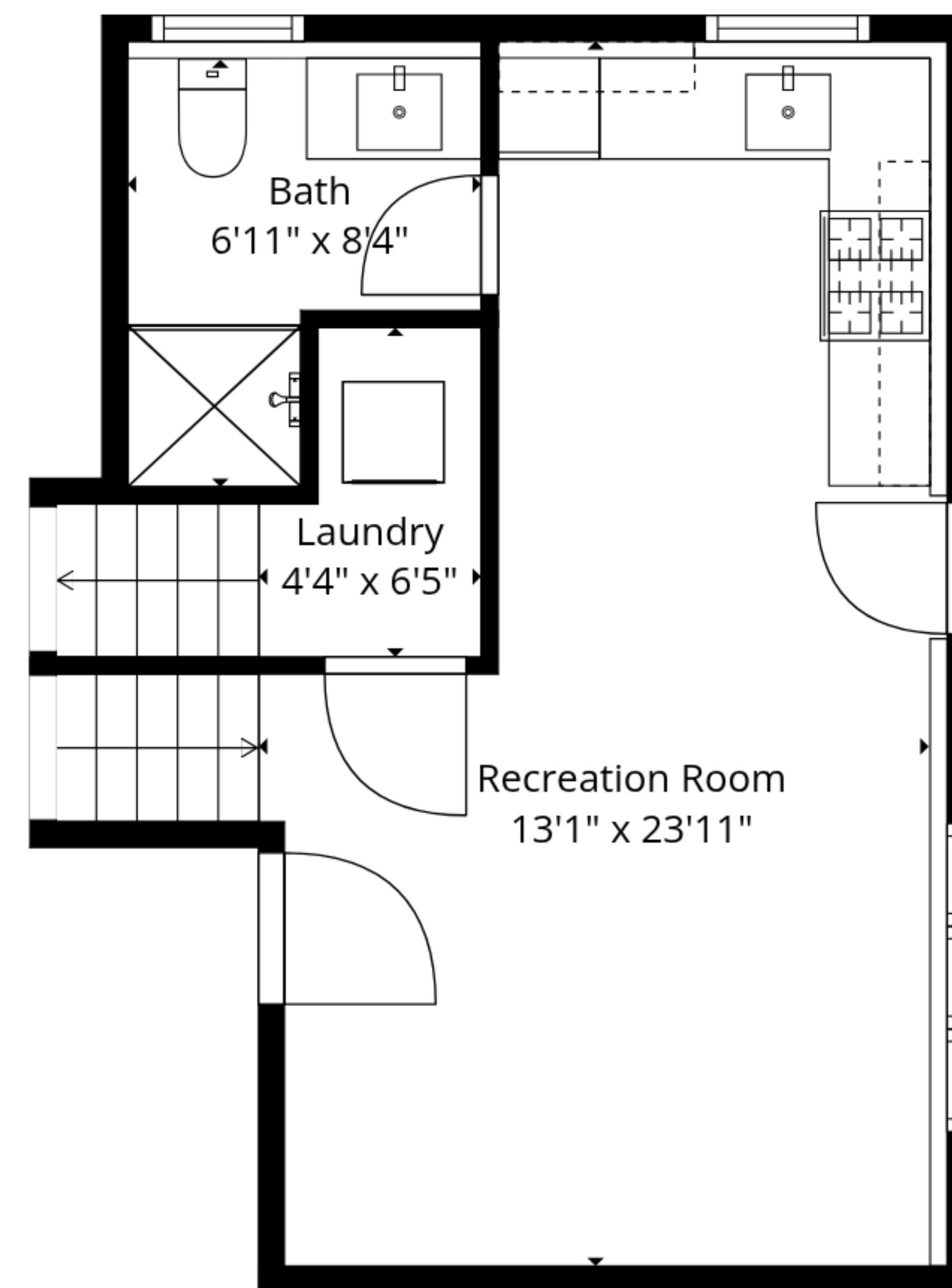


Floor Plans Are Intended To Give a General Indication Of The Property Layout. Sizes And Dimensions Are Estimate, Actual May Vary.

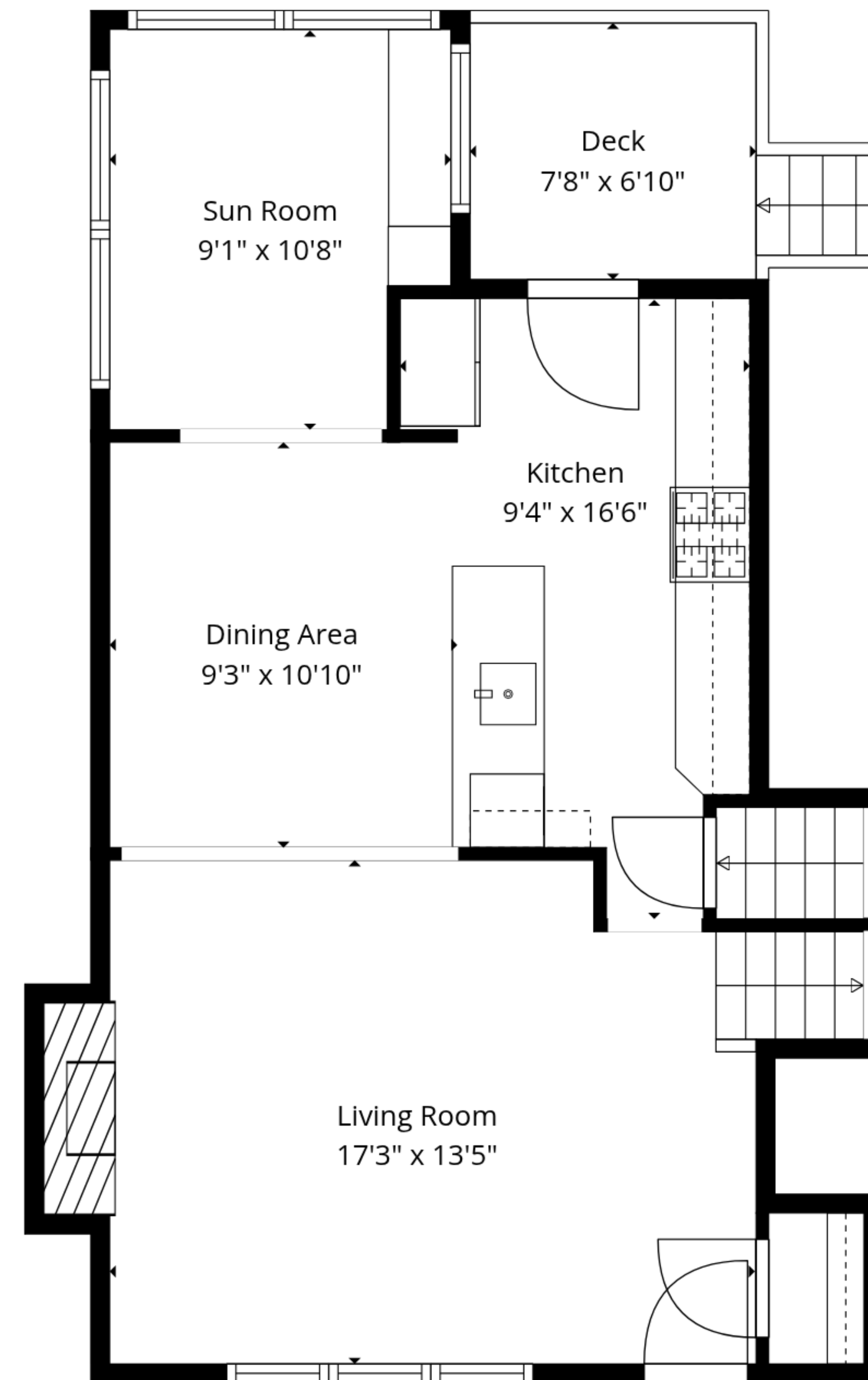




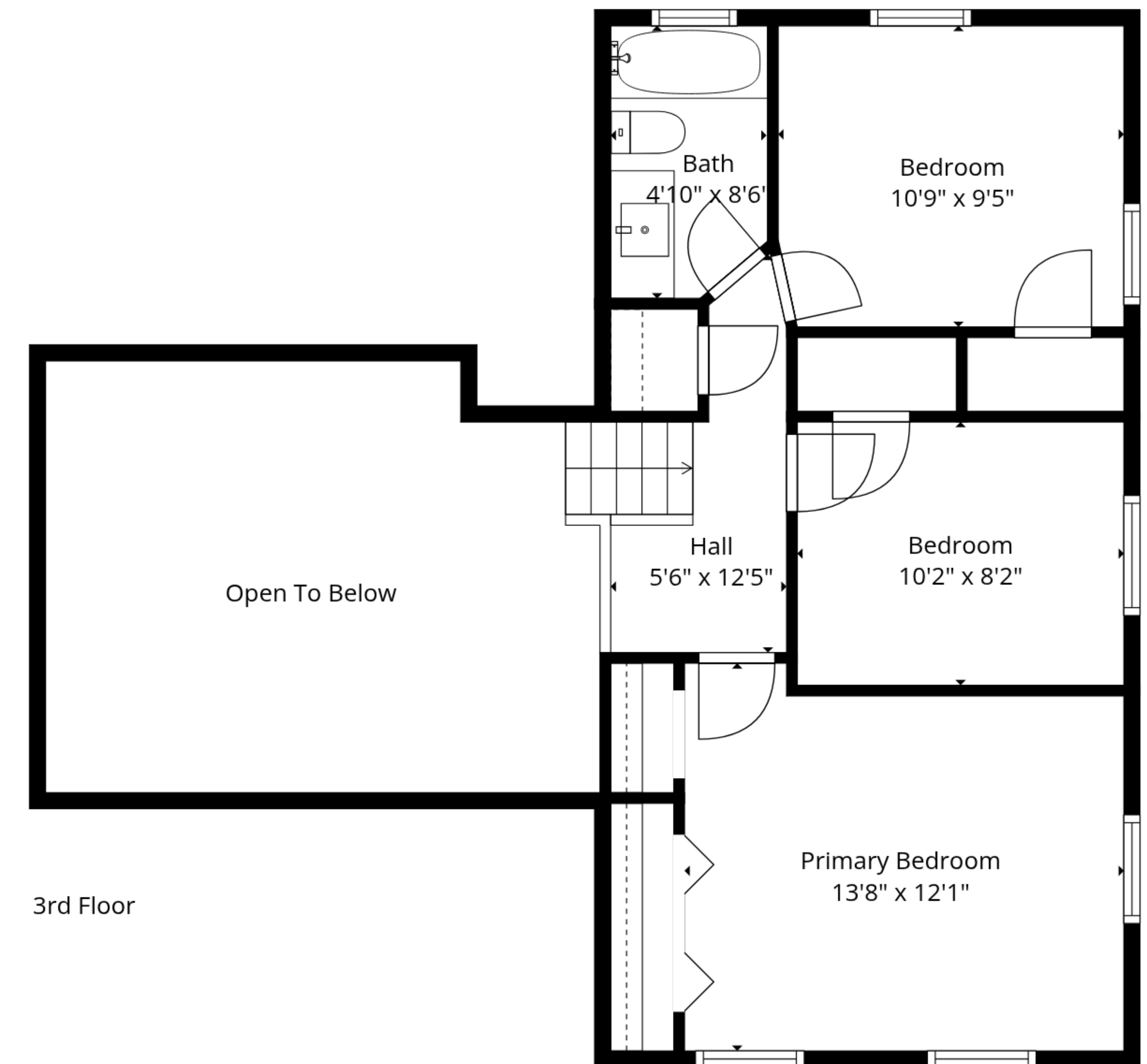
Basement 1



1st Floor



2nd Floor



3rd Floor



TOTAL: 1813 sq. ft
 BELOW GRADE: 346 sq. ft, 1st floor: 364 sq. ft, 2nd floor: 586 sq. ft, 3rd floor: 517 sq. ft
 EXCLUDED AREAS: UTILITY: 71 sq. ft, DECK: 52 sq. ft, FIREPLACE: 12 sq. ft,
 OPEN TO BELOW: 220 sq. ft, WALLS: 211 sq. ft

Floor Plans Are Intended To Give a General Indication Of The Property Layout. Sizes And Dimensions Are Estimate, Actual May Vary.

