

Home data report

6033 E Westview Cir, Wasilla, AK, US



Total Area: 2342 sq. ft

Basement: 128 sq. ft, 1st Floor: 1794 sq. ft, 2nd Floor: 420 sq. ft

Excluded: Porch 30 sq. ft, Utility 64 sq. ft, Entry 33 sq. ft, Garage 1435 sq. ft, Deck 536 sq. ft, Open to below 324 sq. ft, Low ceiling 47 sq. ft, Walls: 253 sq. ft

Property summary

 **3** Floors

 **3** Bedrooms

 **2** Bathrooms

Home data report

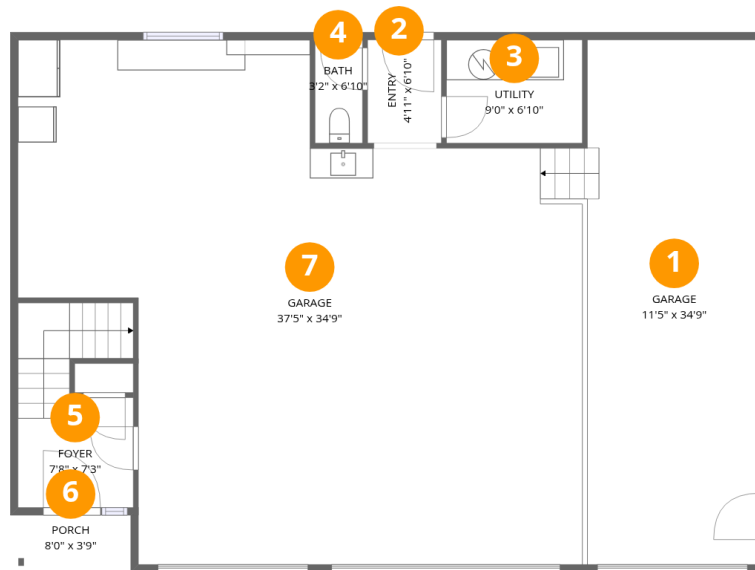
6033 E Westview Cir, Wasilla, AK, US



1
Half baths



2
Garages



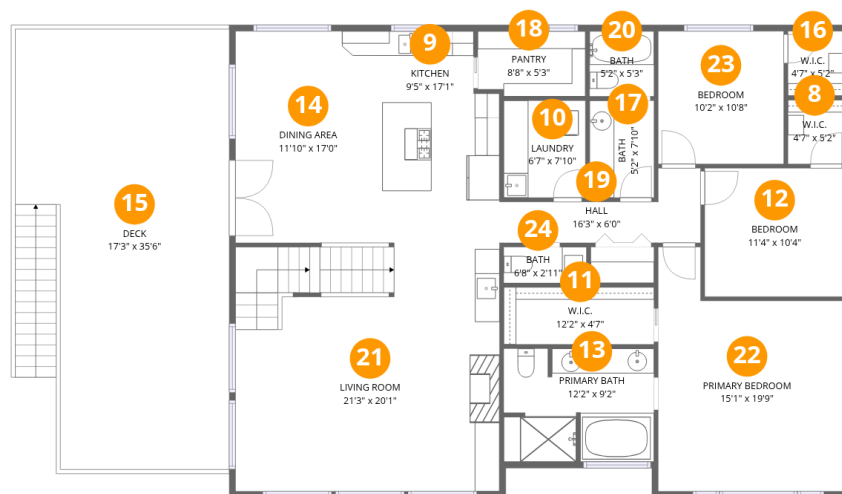
Room dimensions

Floor 1 Below grade

Total: 128sqft

Excluded: 1562sqft

#		Dimensions	sqft	Counted as living area
1	Garage	11'5" x 34'9"	396 sq. ft	No
2	Entry	4'11" x 6'10"	33 sq. ft	No
3	Utility	9'0" x 6'10"	61 sq. ft	No
4	Bath	3'2" x 6'10"	22 sq. ft	Yes
5	Foyer	7'8" x 7'3"	56 sq. ft	Yes
6	Porch	8'0" x 3'9"	30 sq. ft	No
7	Garage	37'5" x 34'9"	1299 sq. ft	No



Room dimensions

Floor 2

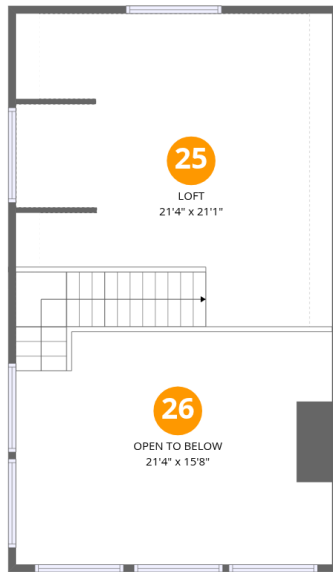
Total: 1794sqft Excluded: 536sqft

#		Dimensions	sqft	Counted as living area
8	W.I.C.	4'7" x 5'2"	24 sq. ft	Yes
9	Kitchen	9'5" x 17'1"	161 sq. ft	Yes
10	Laundry	6'7" x 7'10"	52 sq. ft	Yes
11	W.I.C.	12'2" x 4'7"	56 sq. ft	Yes
12	Bedroom	11'4" x 10'4"	117 sq. ft	Yes
13	Primary Bath	12'2" x 9'2"	111 sq. ft	Yes
14	Dining Area	11'10" x 17'0"	202 sq. ft	Yes
15	Deck	17'3" x 35'6"	612 sq. ft	No
16	W.I.C.	4'7" x 5'2"	24 sq. ft	Yes
17	Bath	5'2" x 7'10"	41 sq. ft	Yes
18	Pantry	8'8" x 5'3"	45 sq. ft	Yes

Home data report

6033 E Westview Cir, Wasilla, AK, US

#		Dimensions	sqft	Counted as living area
19	Hall	16'3" x 6'0"	98 sq. ft	Yes
20	Bath	5'2" x 5'3"	27 sq. ft	Yes
21	Living Room	21'3" x 20'1"	426 sq. ft	Yes
22	Primary Bedroom	15'1" x 19'9"	297 sq. ft	Yes
23	Bedroom	10'2" x 10'8"	108 sq. ft	Yes
24	Bath	6'8" x 2'11"	19 sq. ft	Yes



Room dimensions

Floor 3

Total:420sqft

Excluded: 371sqft

#		Dimensions	sqft	Counted as living area
25	Loft	21'4" x 21'11"	449 sq. ft	Yes
26	Open To Below	21'4" x 15'8"	334 sq. ft	No

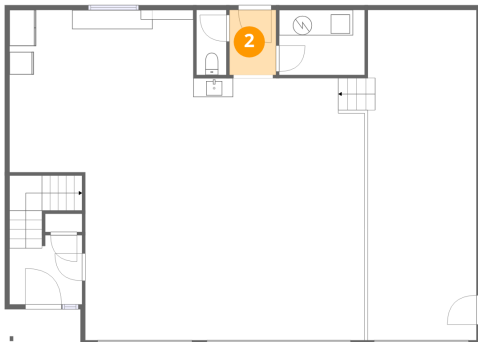
1 Floor 1 - Garage



Dimensions: 11'5" x 34'9"
Area: 396 sq. ft
Counted as living area: No

Heated: No
Finished: No
Enclosed: Yes
Contiguous: Yes
Permitted: Yes
Wet space: No
Addition: No
Conversion: No

2 Floor 1 - Entry



Dimensions: 4'11" x 6'10"
Area: 33 sq. ft
Counted as living area: No

Heated: Yes
Finished: No
Enclosed: Yes
Contiguous: Yes
Permitted: Yes
Wet space: No
Addition: No
Conversion: No

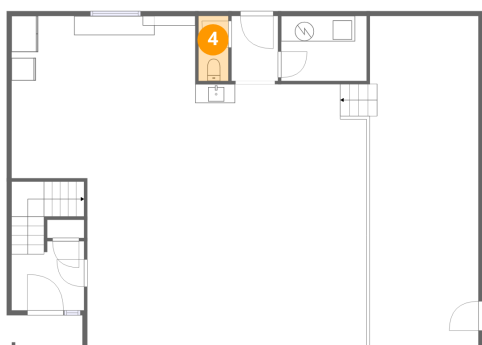
3 Floor 1 - Utility



Dimensions: 9'0" x 6'10"
Area: 61 sq. ft
Counted as living area: No

Heated: Yes
Finished: No
Enclosed: Yes
Contiguous: Yes
Permitted: Yes
Wet space: No
Addition: No
Conversion: No

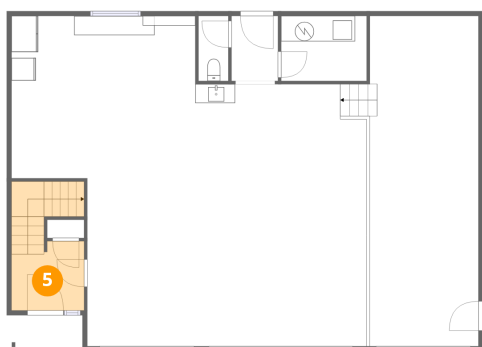
4 Floor 1 - Bath



Dimensions: 3'2" x 6'10"
Area: 22 sq. ft
Counted as living area: No

Heated: Yes
Finished: Yes
Enclosed: Yes
Contiguous: No
Permitted: Yes
Wet space: Yes
Addition: No
Conversion: No

5 Floor 1 - Foyer



Dimensions: 7'8" x 7'3"
Area: 56 sq. ft
Counted as living area: Yes

Heated: Yes
Finished: Yes
Enclosed: Yes
Contiguous: Yes
Permitted: Yes
Wet space: No
Addition: No
Conversion: No

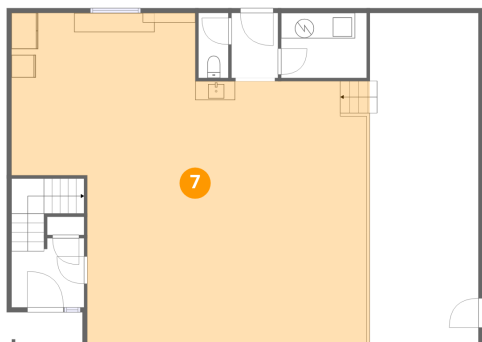
6 Floor 1 - Porch



Dimensions: 8'0" x 3'9"
Area: 30 sq. ft
Counted as living area: No

Heated: No
Finished: No
Enclosed: No
Contiguous: Yes
Permitted: Yes
Wet space: No
Addition: No
Conversion: No

7 Floor 1 - Garage



Dimensions: 37'5" x 34'9"
Area: 1299 sq. ft
Counted as living area: No

Heated: No
Finished: No
Enclosed: Yes
Contiguous: Yes
Permitted: Yes
Wet space: No
Addition: No
Conversion: No

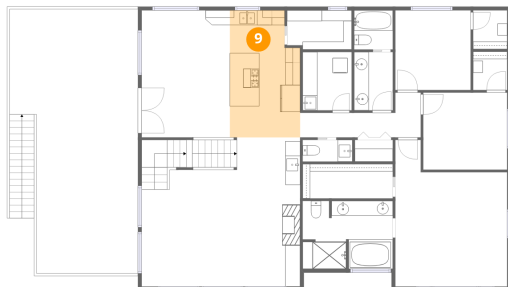
8 Floor 2 - W.I.C.



Dimensions: 4'7" x 5'2"
Area: 24 sq. ft
Counted as living area: Yes

Heated: Yes
Finished: Yes
Enclosed: Yes
Contiguous: Yes
Permitted: Yes
Wet space: No
Addition: No
Conversion: No

9 Floor 2 - Kitchen



Dimensions: 9'5" x 17'1"
Area: 161 sq. ft
Counted as living area: Yes

Heated: Yes
Finished: Yes
Enclosed: Yes
Contiguous: Yes
Permitted: Yes
Wet space: No
Addition: No
Conversion: No

10 Floor 2 - Laundry



Dimensions: 6'7" x 7'10"
Area: 52 sq. ft
Counted as living area: Yes

Heated: Yes
Finished: Yes
Enclosed: Yes
Contiguous: Yes
Permitted: Yes
Wet space: No
Addition: No
Conversion: No

11 Floor 2 - W.I.C.



Dimensions: 12'2" x 4'7"
Area: 56 sq. ft
Counted as living area: Yes

Heated: Yes
Finished: Yes
Enclosed: Yes
Contiguous: Yes
Permitted: Yes
Wet space: No
Addition: No
Conversion: No

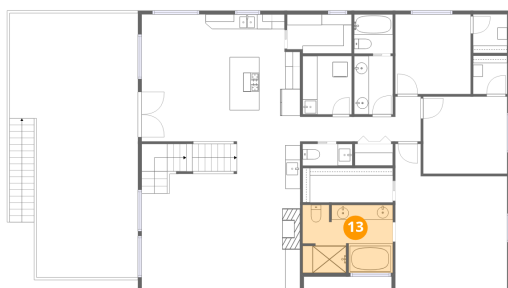
12 Floor 2 - Bedroom



Dimensions: 11'4" x 10'4"
Area: 117 sq. ft
Counted as living area: Yes

Heated: Yes
Finished: Yes
Enclosed: Yes
Contiguous: Yes
Permitted: Yes
Wet space: No
Addition: No
Conversion: No

13 Floor 2 - Primary Bath



Dimensions: 12'2" x 9'2"
Area: 111 sq. ft
Counted as living area: Yes

Heated: Yes
Finished: Yes
Enclosed: Yes
Contiguous: Yes
Permitted: Yes
Wet space: Yes
Addition: No
Conversion: No

14 Floor 2 - Dining Area



Dimensions: 11'10" x 17'0"
Area: 202 sq. ft
Counted as living area: Yes

Heated: Yes
Finished: Yes
Enclosed: Yes
Contiguous: Yes
Permitted: Yes
Wet space: No
Addition: No
Conversion: No

15 Floor 2 - Deck



Dimensions: 17'3" x 35'6"
Area: 612 sq. ft
Counted as living area: No

Heated: No
Finished: No
Enclosed: No
Contiguous: Yes
Permitted: Yes
Wet space: No
Addition: No
Conversion: No

16 Floor 2 - W.I.C.



Dimensions: 4'7" x 5'2"
Area: 24 sq. ft
Counted as living area: Yes

Heated: Yes
Finished: Yes
Enclosed: Yes
Contiguous: Yes
Permitted: Yes
Wet space: No
Addition: No
Conversion: No

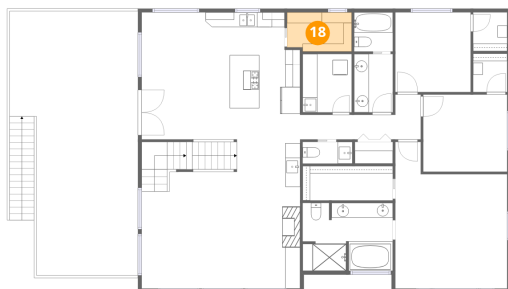
17 Floor 2 - Bath



Dimensions: 5'2" x 7'10"
Area: 41 sq. ft
Counted as living area: Yes

Heated: Yes
Finished: Yes
Enclosed: Yes
Contiguous: Yes
Permitted: Yes
Wet space: Yes
Addition: No
Conversion: No

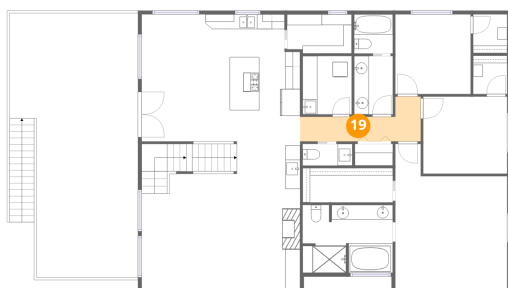
18 Floor 2 - Pantry



Dimensions: 8'8" x 5'3"
Area: 45 sq. ft
Counted as living area: Yes

Heated: Yes
Finished: Yes
Enclosed: Yes
Contiguous: Yes
Permitted: Yes
Wet space: No
Addition: No
Conversion: No

19 Floor 2 - Hall



Dimensions: 16'3" x 6'0"
Area: 98 sq. ft
Counted as living area: Yes

Heated: Yes
Finished: Yes
Enclosed: Yes
Contiguous: Yes
Permitted: Yes
Wet space: No
Addition: No
Conversion: No

20 Floor 2 - Bath



Dimensions: 5'2" x 5'3"
Area: 27 sq. ft
Counted as living area: Yes

Heated: Yes
Finished: Yes
Enclosed: Yes
Contiguous: Yes
Permitted: Yes
Wet space: Yes
Addition: No
Conversion: No

21 Floor 2 - Living Room



Dimensions: 21'3" x 20'1"
Area: 426 sq. ft
Counted as living area: Yes

Heated: Yes
Finished: Yes
Enclosed: Yes
Contiguous: Yes
Permitted: Yes
Wet space: No
Addition: No
Conversion: No

22 Floor 2 - Primary Bedroom



Dimensions: 15'1" x 19'9"
Area: 297 sq. ft
Counted as living area: Yes

Heated: Yes
Finished: Yes
Enclosed: Yes
Contiguous: Yes
Permitted: Yes
Wet space: No
Addition: No
Conversion: No

23 Floor 2 - Bedroom



Dimensions: 10'2" x 10'8"
Area: 108 sq. ft
Counted as living area: Yes

Heated: Yes
Finished: Yes
Enclosed: Yes
Contiguous: Yes
Permitted: Yes
Wet space: No
Addition: No
Conversion: No

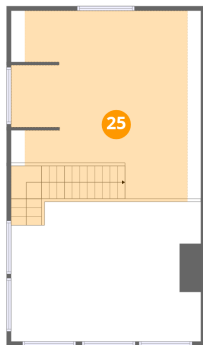
24 Floor 2 - Bath



Dimensions: 6'8" x 2'11"
Area: 19 sq. ft
Counted as living area: Yes

Heated: Yes
Finished: Yes
Enclosed: Yes
Contiguous: Yes
Permitted: Yes
Wet space: Yes
Addition: No
Conversion: No

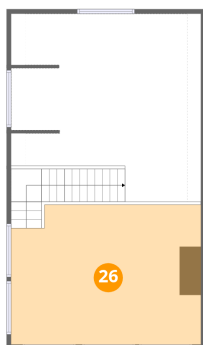
25 Floor 3 - Loft



Dimensions: 21'4" x 21'1"
Area: 449 sq. ft
Counted as living area: Yes

Heated: Yes
Finished: Yes
Enclosed: Yes
Contiguous: Yes
Permitted: Yes
Wet space: No
Addition: No
Conversion: No

26 Floor 3 - Open To Below



Dimensions: 21'4" x 15'8"
Area: 334 sq. ft
Counted as living area: No

Heated: No
Finished: No
Enclosed: No
Contiguous: Yes
Permitted: No
Wet space: No
Addition: No
Conversion: No