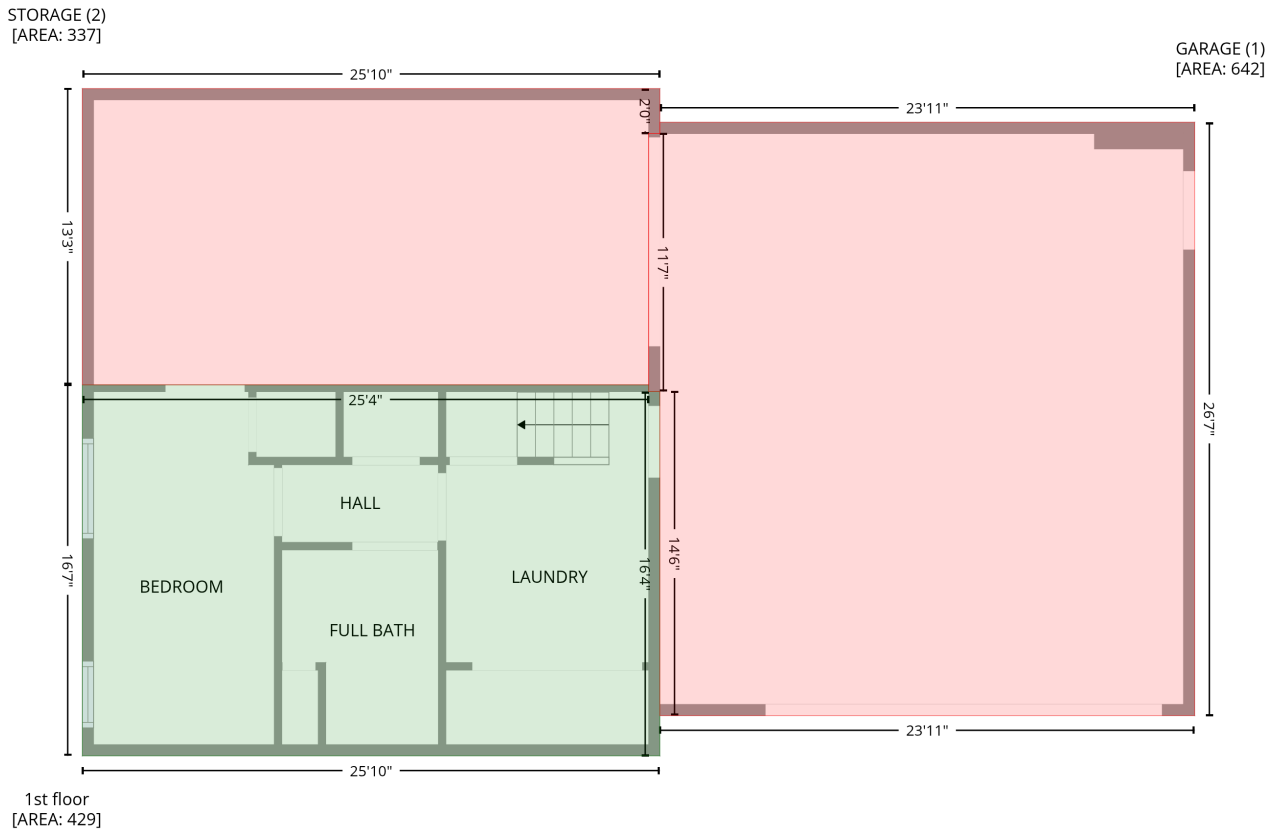


636 Beechwood Drive, Bracey, Mecklenburg County, Virginia, United States, 23919

Gross Living Area: 2847 sq. ft

Level 1



Space	Area (sq. ft)	Calculation <small>Coordinate Polygon Area Algorithm using inches</small>
1st floor (Living area)	429	$-\left((304.2 + 304.2) * (335.9 - 339.6) + (304.2 + 310.2) * (339.6 - 339.6) + (310.2 + 310.2) * (339.6 - 535.2) + (310.2 + -0.1) * (535.2 - 535.2) + (-0.1 + -0.1) * (535.2 - 335.9) + (-0.1 + 304.2) * (335.9 - 335.9)\right) * 0.5 * 0.00694$
GARAGE (Non-living area)	642	$-\left((597.6 + 597.6) * (195 - 513.6) + (597.6 + 310.2) * (513.6 - 513.6) + (310.2 + 310.2) * (513.6 - 339.6) + (310.2 + 304.2) * (339.6 - 339.6) + (304.2 + 304.2) * (339.6 - 201) + (304.2 + 310.2) * (201 - 201) + (310.2 + 310.2) * (201 - 195) + (310.2 + 597.6) * (195 - 195)\right) * 0.5 * 0.00694$
STORAGE (Non-living area)	337	$-\left((310.2 + 310.2) * (176.9 - 201) + (310.2 + 304.2) * (201 - 201) + (304.2 + 304.2) * (201 - 335.9) + (304.2 + -0.1) * (335.9 - 335.9) + (-0.1 + -0.1) * (335.9 - 176.9) + (-0.1 + 310.2) * (176.9 - 176.9)\right) * 0.5 * 0.00694$

636 Beechwood Drive, Bracey, Mecklenburg County, Virginia, United States, 23919

Gross Living Area: 2847 sq. ft

Level 2



Space	Area (sq. ft)	Calculation
2nd floor (Living area)	1607	Coordinate Polygon Area Algorithm using inches $-((197.2 + 197.2) * (31.6 - 176.9) + (197.2 + 310.2) * (176.9 - 176.9) + (310.2 + 310.2) * (176.9 - 195) + (310.2 + 597.6) * (195 - 195) + (597.6 + 597.6) * (195 - 513.6) + (597.6 + 310.2) * (513.6 - 513.6) + (310.2 + 310.2) * (513.6 - 535.2) + (310.2 + -0.1) * (535.2 - 535.2) + (-0.1 + -0.1) * (535.2 - 31.6) + (-0.1 + 197.2) * (31.6 - 31.6)) * 0.5 * 0.00694$
PORCH (Non-living area)	46	$-((306.2 + 306.2) * (535.2 - 595.8) + (306.2 + 197.2) * (595.8 - 595.8) + (197.2 + 197.2) * (595.8 - 535.2) + (197.2 + 306.2) * (535.2 - 535.2)) * 0.5 * 0.00694$

636 Beechwood Drive, Bracey, Mecklenburg County, Virginia, United States, 23919

Gross Living Area: 2847 sq. ft

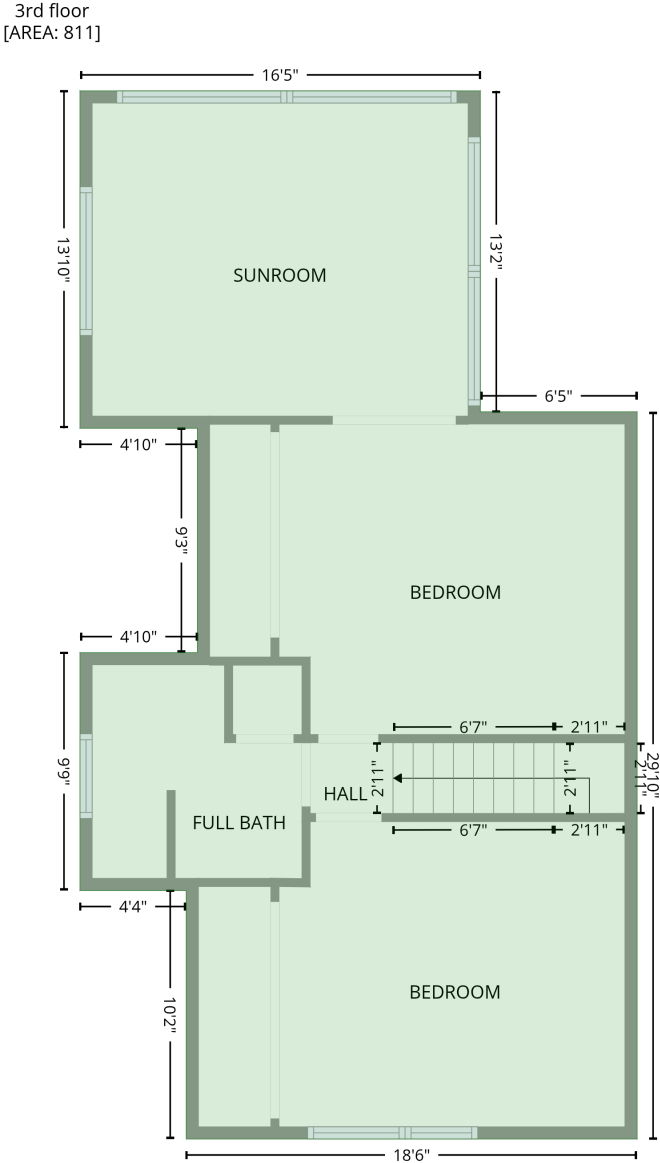
Level 2

Space	Area (sq. ft)	Calculation <small>Coordinate Polygon Area Algorithm using inches</small>
DECK (Non-living area)	306	$\begin{aligned} & -((421.3 + 516.8) * (37.6 - 125.7) + (516.8 + 516.8) * (125.7 - 195) + (516.8 + 310.2) * (195 - 195) \\ & + (310.2 + 310.2) * (195 - 176.9) + (310.2 + 197.2) * (176.9 - 176.9) + (197.2 + 197.2) * (176.9 - \\ & 37.6) + (197.2 + 421.3) * (37.6 - 37.6)) * 0.5 * 0.00694 \end{aligned}$

636 Beechwood Drive, Bracey, Mecklenburg County, Virginia, United States, 23919

Gross Living Area: 2847 sq. ft

Level 3



Space	Area (sq. ft)	Calculation <small>Coordinate Polygon Area Algorithm using inches</small>
3rd floor (Living area)	811	$-((197.2 + 197.2) * (18.7 - 176.9) + (197.2 + 274.5) * (176.9 - 176.9) + (274.5 + 274.5) * (176.9 - 535.2) + (274.5 + 52.2) * (535.2 - 535.2) + (52.2 + 52.2) * (535.2 - 412.8) + (52.2 + -0.1) * (412.8 - 412.8) + (-0.1 + -0.1) * (412.8 - 295.5) + (-0.1 + 57.7) * (295.5 - 295.5) + (57.7 + 57.7) * (295.5 - 185) + (57.7 + -0.1) * (185 - 185) + (-0.1 + -0.1) * (185 - 18.7) + (-0.1 + 197.2) * (18.7 - 18.7)) * 0.5 * 0.00694$