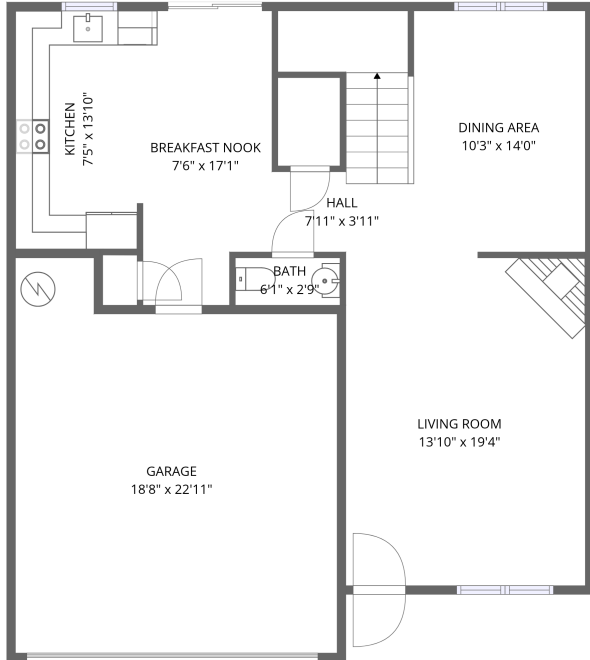
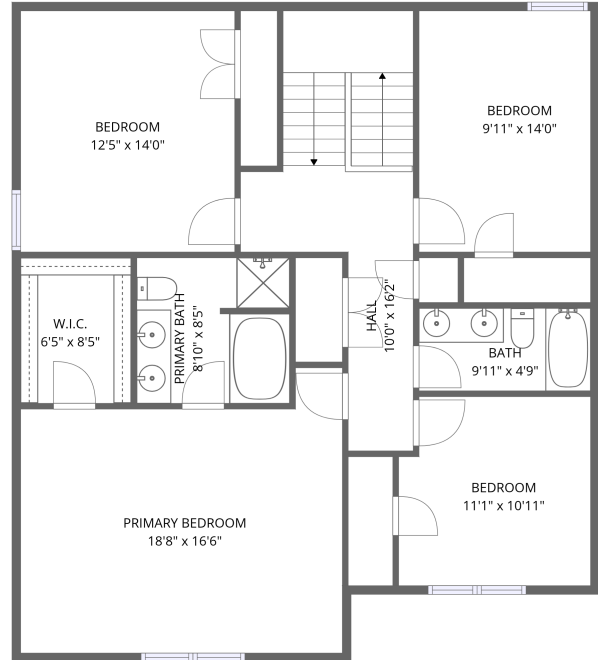


Home data report

7128 Lawgiver Cir, Corryton, TN, US



1st floor



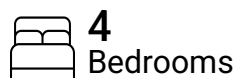
2nd floor

Total Area: 1943 sq. ft

1st Floor: 772 sq. ft, 2nd Floor: 1171 sq. ft

Excluded: Garage 381 sq. ft, Walls: 160 sq. ft

Property summary



Scan captured on Wed, 13 May 2026 15:12:25 GMT

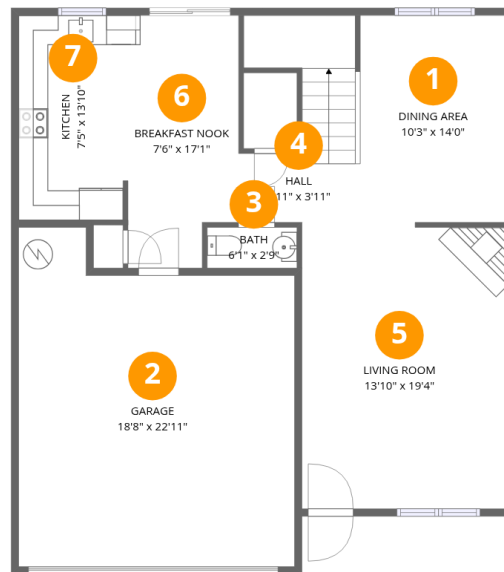
FLOOR PLAN CREATED BY CUBICASA APP. MEASUREMENTS ARE CONSIDERED RELIABLE BUT NOT ACCURATE.

Home data report

7128 Lawgiver Cir, Corryton, TN, US

 **1**
Half baths

 **1**
Garages



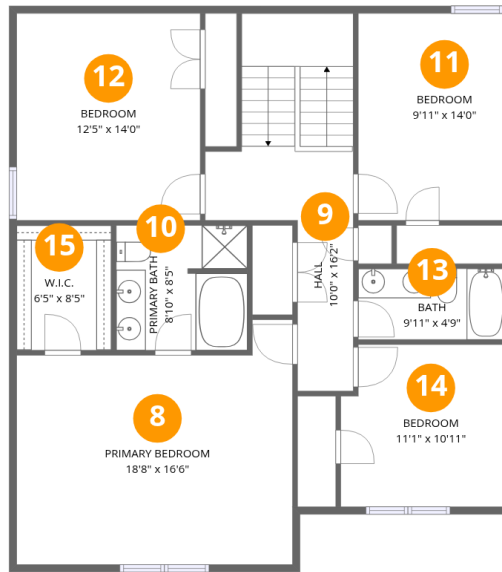
Room dimensions

Floor 1

Total: 772 sqft

Excluded: 381 sqft

#		Dimensions	sqft	Counted as living area
1	Dining Area	10'3" x 14'0"	142 sq. ft	Yes
2	Garage	18'8" x 22'11"	381 sq. ft	No
3	Bath	6'1" x 2'9"	17 sq. ft	Yes
4	Hall	7'11" x 3'11"	84 sq. ft	Yes
5	Living Room	13'10" x 19'4"	266 sq. ft	Yes
6	Breakfast Nook	7'6" x 17'1"	120 sq. ft	Yes
7	Kitchen	7'5" x 13'10"	101 sq. ft	Yes



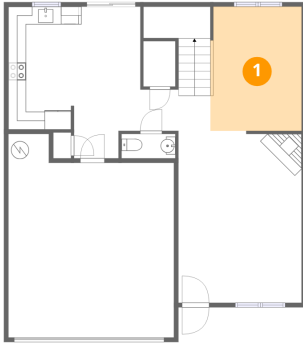
Room dimensions

Floor 2

Total: 1171 sqft Excluded: 0 sqft

#		Dimensions	sqft	Counted as living area
8	Primary Bedroom	18'8" x 16'6"	270 sq. ft	Yes
9	Hall	10'0" x 16'2"	160 sq. ft	Yes
10	Primary Bath	8'10" x 8'5"	73 sq. ft	Yes
11	Bedroom	9'11" x 14'0"	139 sq. ft	Yes
12	Bedroom	12'5" x 14'0"	173 sq. ft	Yes
13	Bath	9'11" x 4'9"	48 sq. ft	Yes
14	Bedroom	11'1" x 10'11"	118 sq. ft	Yes
15	W.I.C.	6'5" x 8'5"	54 sq. ft	Yes

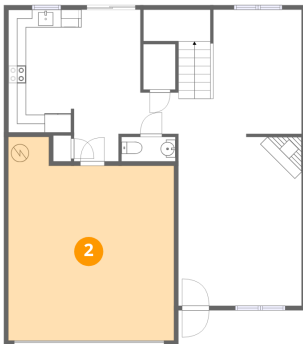
1 Floor 1 - Dining Area



Dimensions: 10'3" x 14'0"
Area: 142 sq. ft
Counted as living area: Yes

Heated: Yes
Finished: Yes
Enclosed: Yes
Contiguous: Yes
Permitted: Yes
Wet space: No
Addition: No
Conversion: No

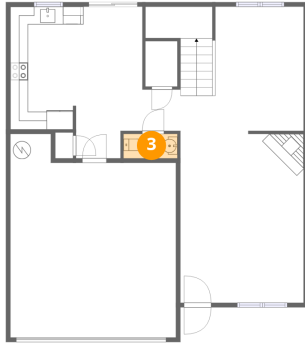
2 Floor 1 - Garage



Dimensions: 18'8" x 22'11"
Area: 381 sq. ft
Counted as living area: No

Heated: No
Finished: No
Enclosed: Yes
Contiguous: Yes
Permitted: Yes
Wet space: No
Addition: No
Conversion: No

3 Floor 1 - Bath



Dimensions: 6'1" x 2'9"
Area: 17 sq. ft
Counted as living area: Yes

Heated: Yes
Finished: Yes
Enclosed: Yes
Contiguous: Yes
Permitted: Yes
Wet space: Yes
Addition: No
Conversion: No

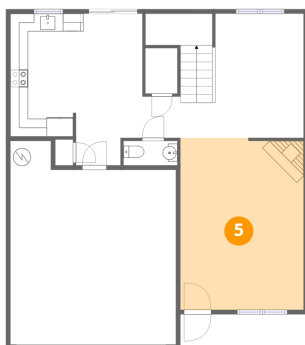
4 Floor 1 - Hall



Dimensions: 7'11" x 3'11"
Area: 84 sq. ft
Counted as living area: Yes

Heated: Yes
Finished: Yes
Enclosed: Yes
Contiguous: Yes
Permitted: Yes
Wet space: No
Addition: No
Conversion: No

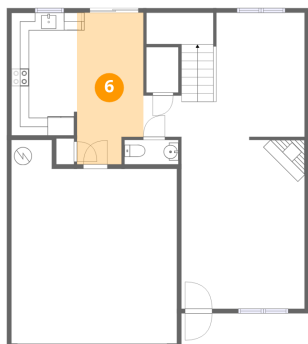
5 Floor 1 - Living Room



Dimensions: 13'10" x 19'4"
Area: 266 sq. ft
Counted as living area: Yes

Heated: Yes
Finished: Yes
Enclosed: Yes
Contiguous: Yes
Permitted: Yes
Wet space: No
Addition: No
Conversion: No

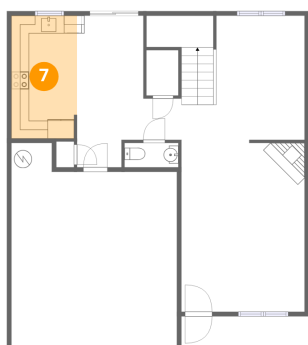
6 Floor 1 - Breakfast Nook



Dimensions: 7'6" x 17'1"
Area: 120 sq. ft
Counted as living area: Yes

Heated: Yes
Finished: Yes
Enclosed: Yes
Contiguous: Yes
Permitted: Yes
Wet space: No
Addition: No
Conversion: No

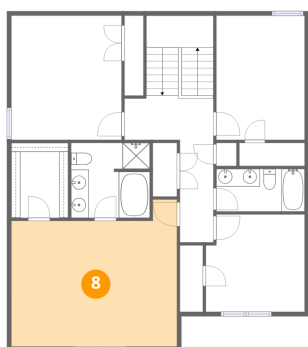
7 Floor 1 - Kitchen



Dimensions: 7'5" x 13'10"
Area: 101 sq. ft
Counted as living area: Yes

Heated: Yes
Finished: Yes
Enclosed: Yes
Contiguous: Yes
Permitted: Yes
Wet space: No
Addition: No
Conversion: No

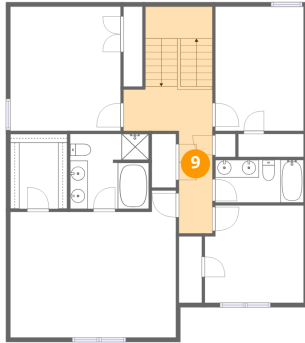
8 Floor 2 - Primary Bedroom



Dimensions: 18'8" x 16'6"
Area: 270 sq. ft
Counted as living area: Yes

Heated: Yes
Finished: Yes
Enclosed: Yes
Contiguous: Yes
Permitted: Yes
Wet space: No
Addition: No
Conversion: No

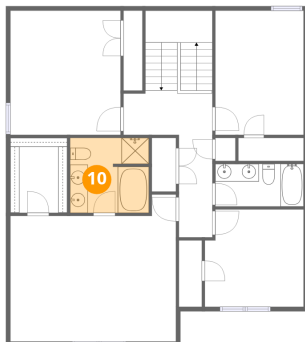
9 Floor 2 - Hall



Dimensions: 10'0" x 16'2"
Area: 160 sq. ft
Counted as living area: Yes

Heated: Yes
Finished: Yes
Enclosed: Yes
Contiguous: Yes
Permitted: Yes
Wet space: No
Addition: No
Conversion: No

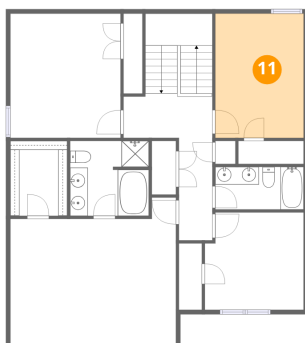
10 Floor 2 - Primary Bath



Dimensions: 8'10" x 8'5"
Area: 73 sq. ft
Counted as living area: Yes

Heated: Yes
Finished: Yes
Enclosed: Yes
Contiguous: Yes
Permitted: Yes
Wet space: Yes
Addition: No
Conversion: No

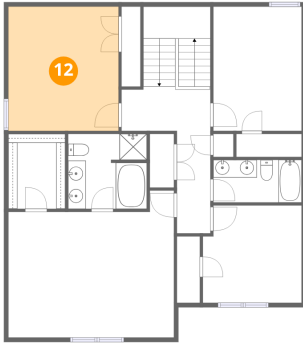
11 Floor 2 - Bedroom



Dimensions: 9'11" x 14'0"
Area: 139 sq. ft
Counted as living area: Yes

Heated: Yes
Finished: Yes
Enclosed: Yes
Contiguous: Yes
Permitted: Yes
Wet space: No
Addition: No
Conversion: No

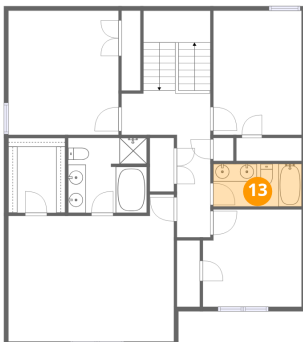
12 Floor 2 - Bedroom



Dimensions: 12'5" x 14'0"
Area: 173 sq. ft
Counted as living area: Yes

Heated: Yes
Finished: Yes
Enclosed: Yes
Contiguous: Yes
Permitted: Yes
Wet space: No
Addition: No
Conversion: No

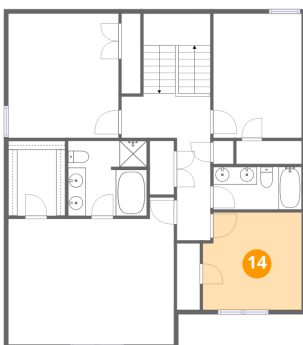
13 Floor 2 - Bath



Dimensions: 9'11" x 4'9"
Area: 48 sq. ft
Counted as living area: Yes

Heated: Yes
Finished: Yes
Enclosed: Yes
Contiguous: Yes
Permitted: Yes
Wet space: Yes
Addition: No
Conversion: No

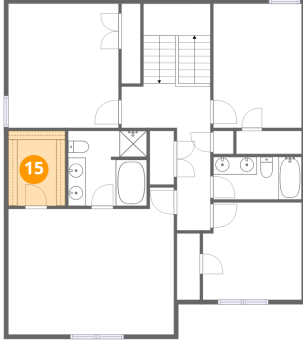
14 Floor 2 - Bedroom



Dimensions: 11'1" x 10'11"
Area: 118 sq. ft
Counted as living area: Yes

Heated: Yes
Finished: Yes
Enclosed: Yes
Contiguous: Yes
Permitted: Yes
Wet space: No
Addition: No
Conversion: No

15 Floor 2 - W.I.C.



Dimensions: 6'5" x 8'5"
Area: 54 sq. ft
Counted as living area: Yes

Heated: Yes
Finished: Yes
Enclosed: Yes
Contiguous: Yes
Permitted: Yes
Wet space: No
Addition: No
Conversion: No